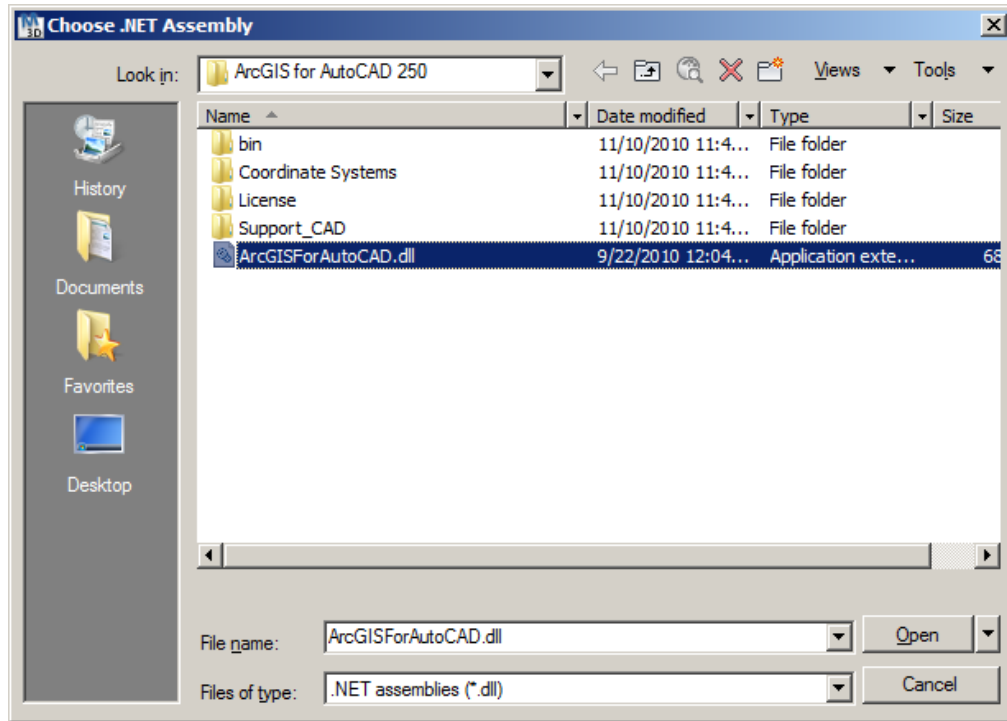
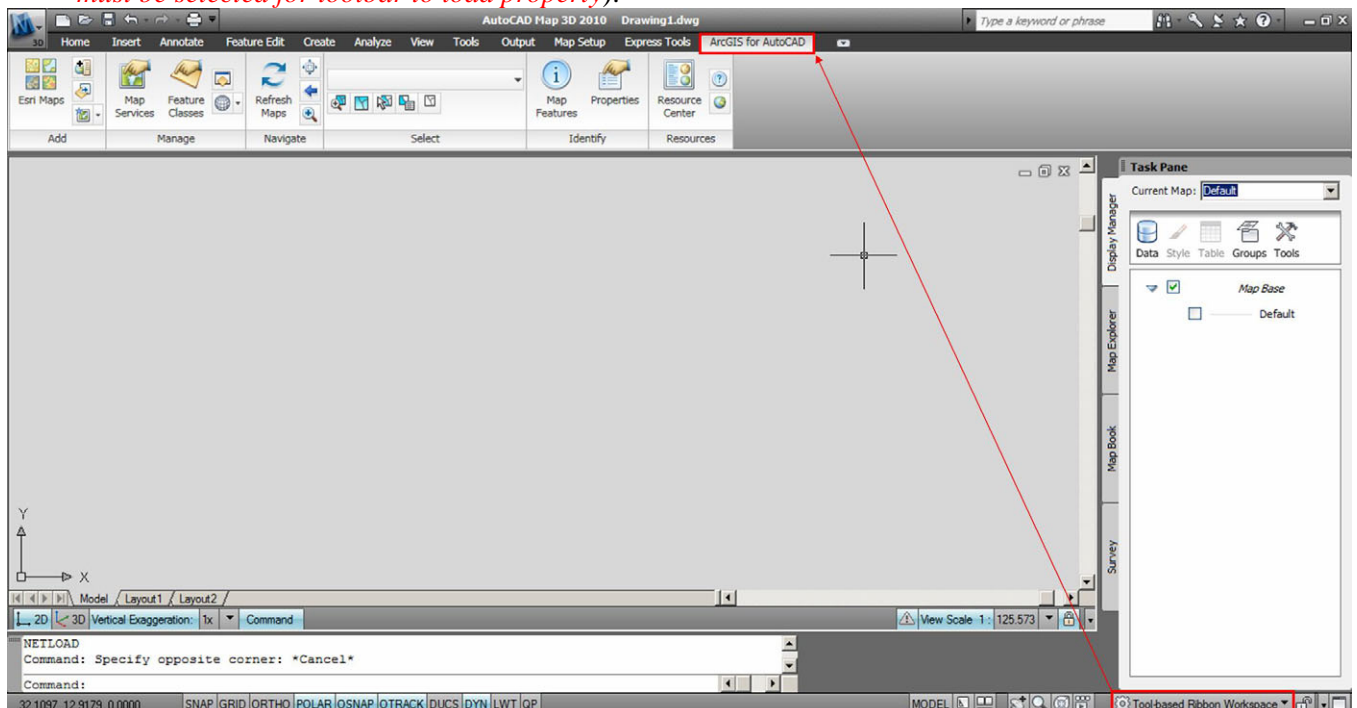


1. Download and Run the '[ArcGISforAutoCADDownload](#)' executable from ESRI's website. Both 32-bit and 64-bit versions of the executable are available.
2. Open AutoCAD and Type "netload" in AutoCAD command line. Press ENTER to open the 'Choose .NET Assembly' dialogue box.

Select and Open the 'ArcGISForAutoCAD.dll (typically located in C:\Program Files\ArcGIS for AutoCAD):



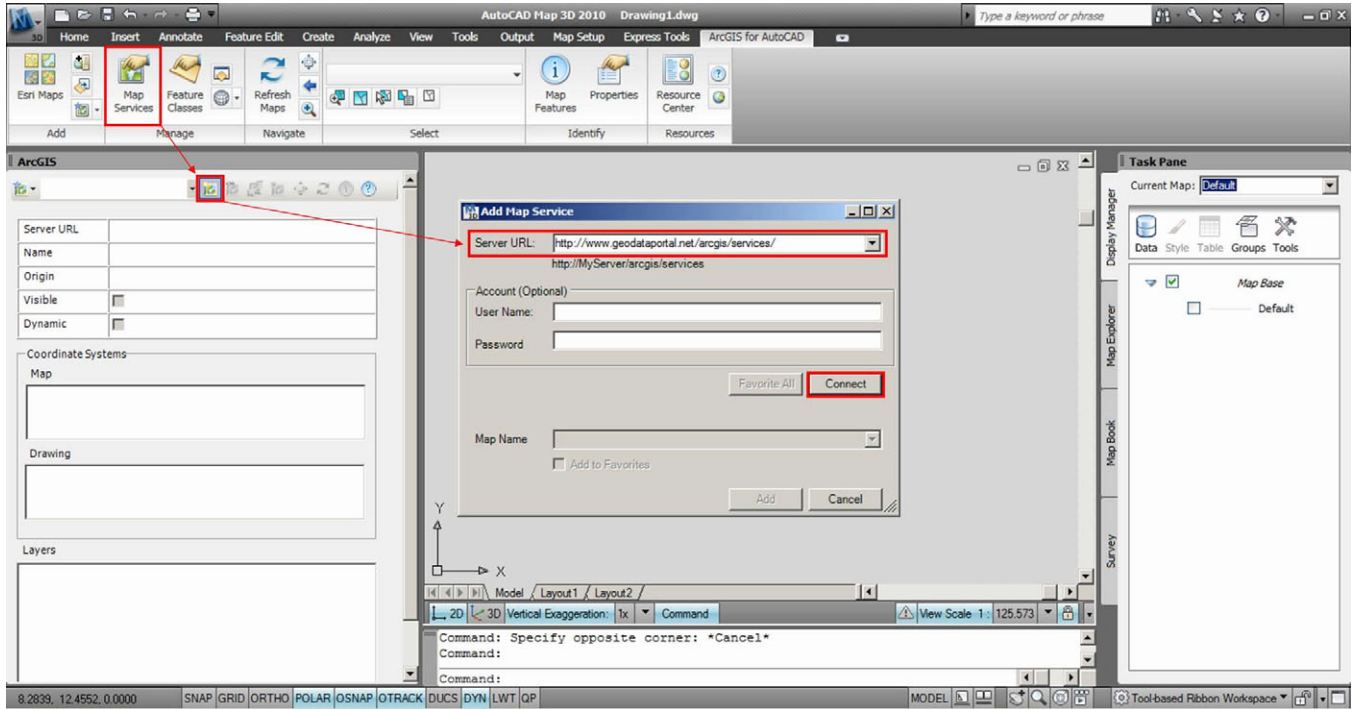
3. The ArcGIS for AutoCAD toolbar loads (*Note: A 'Ribbon' workspace – either 'Tool-based' or 'Task-based' – must be selected for toolbar to load properly*):



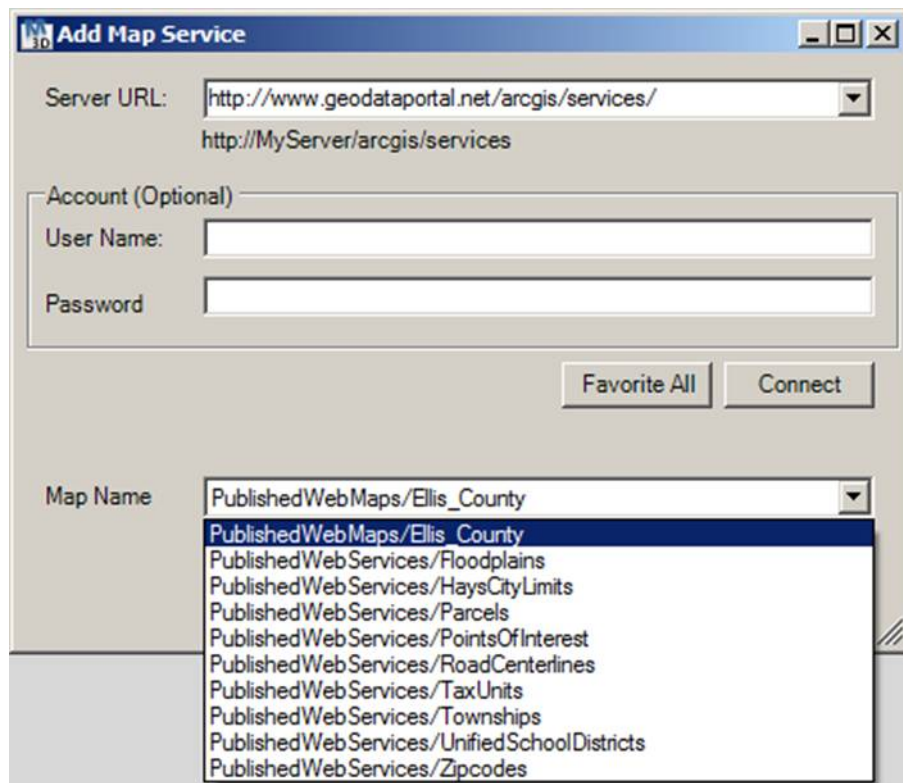
- To add a map service, click 'Map Services', then click the 'Add Map Service' icon. In the 'Add Map Service' dialog, enter the following for 'Server URL':

<http://www.geodataportal.net/arcgis/services/>

Click 'Connect':



- Map services can now be added. Click the 'Map Name' dropdown, choose a map layer, and click 'Add':



6. The service will be added to the layout (zoom extents to view):

