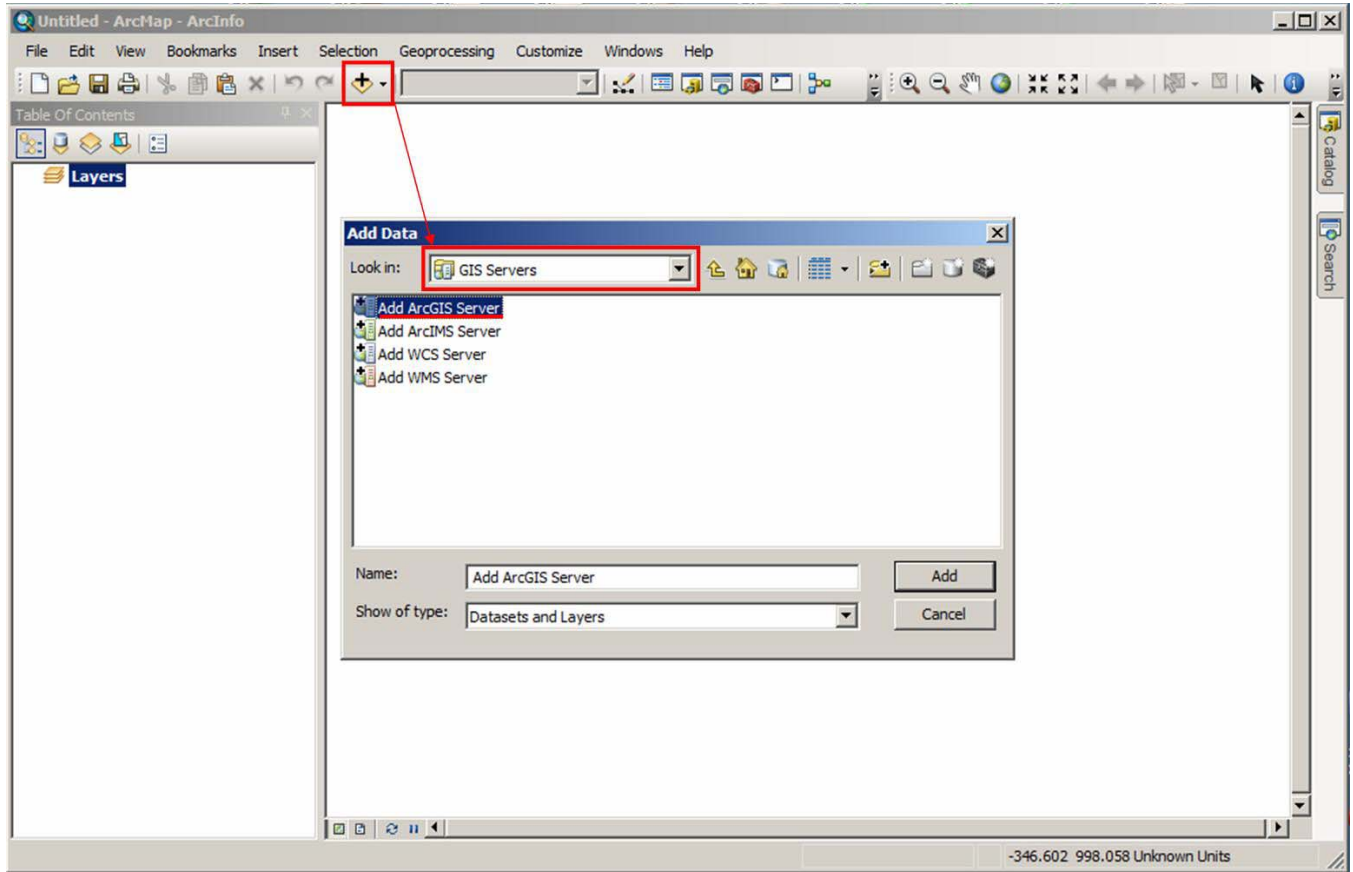
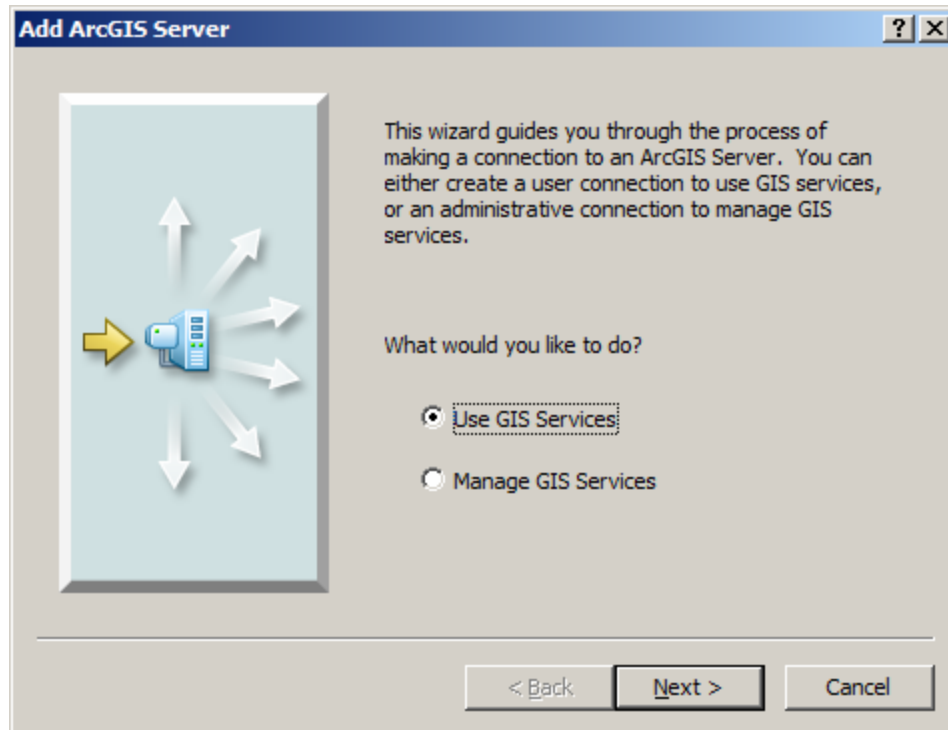


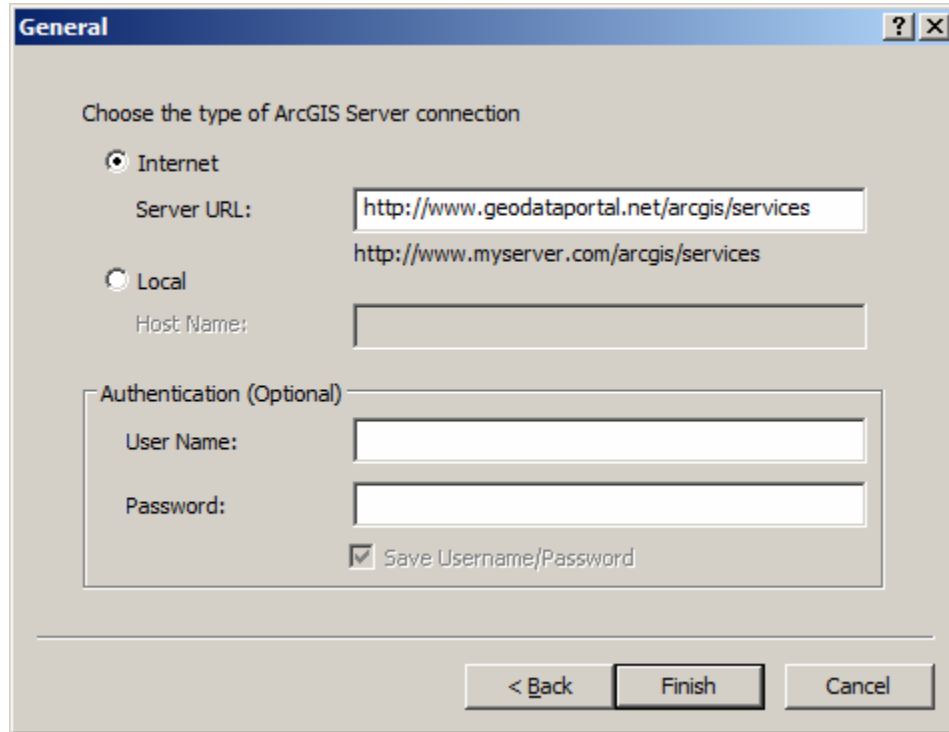
1. After launching ArcView, select 'Add Data' choose 'GIS Services' and select 'Add ArcGIS Server':



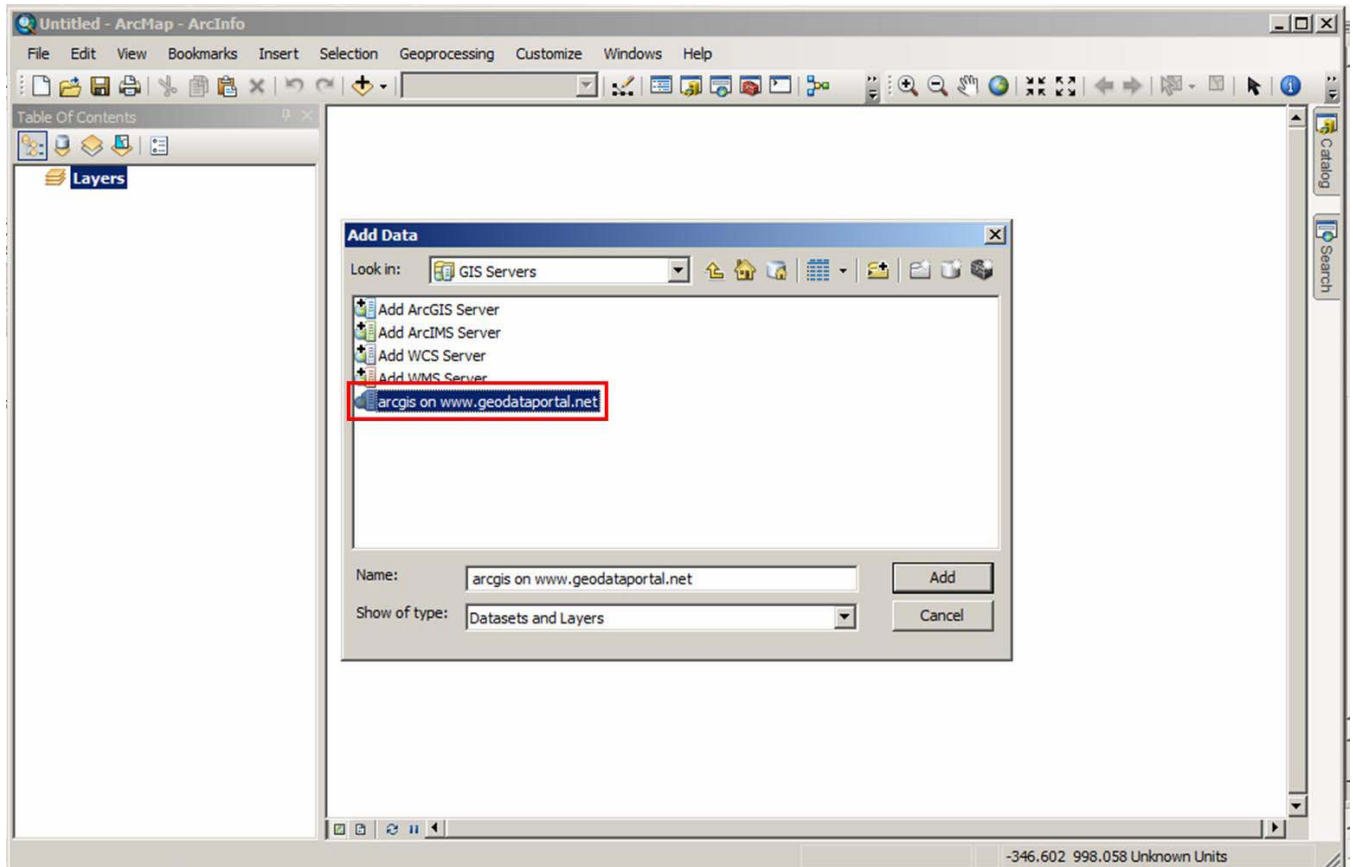
2. In the 'Add GIS Service' dialogue, choose 'Use GIS Services' and click Next:



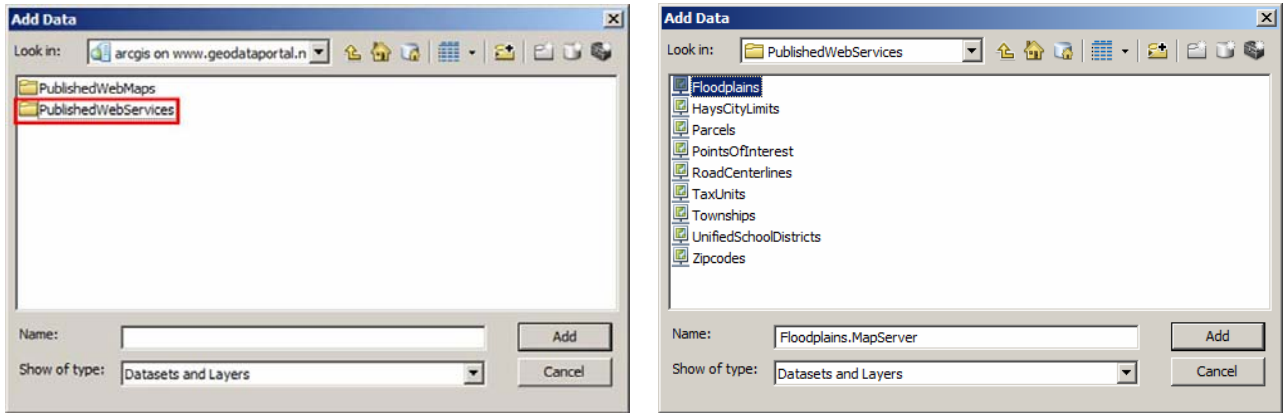
3. Select 'Internet' and enter the following for 'Server URL': <http://www.geodataportal.net/arcgis/services/>



4. Click 'Finish'. You will now have the option to choose 'arcgis on www.geodataportal.net':



- To add a map service, double-click 'PublishedWebServices', select the appropriate map service, and click 'Add':



- The map service is now added and will appear in the 'Table of Contents':

