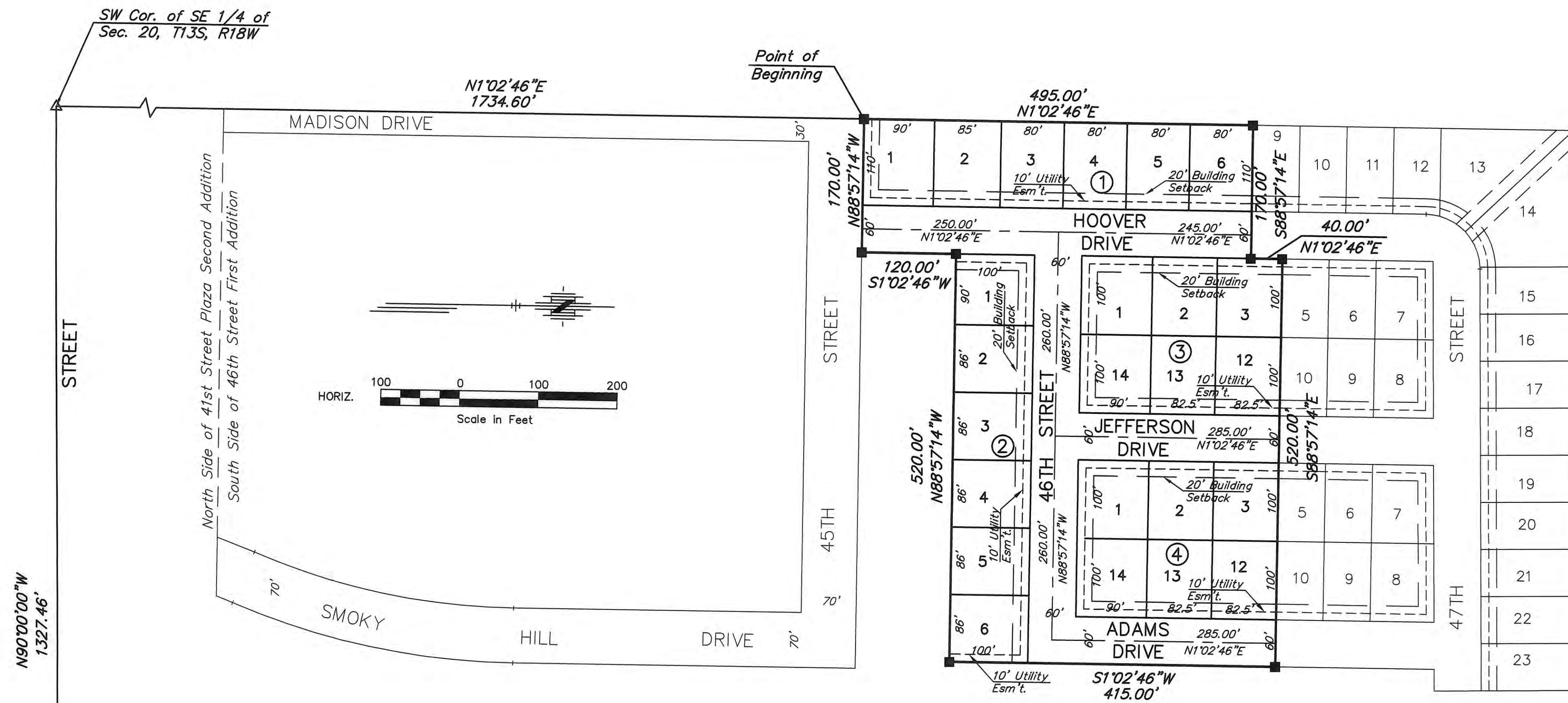


REPLAT OF A PORTION OF 46TH STREET FIRST ADDITION HAYS, KANSAS

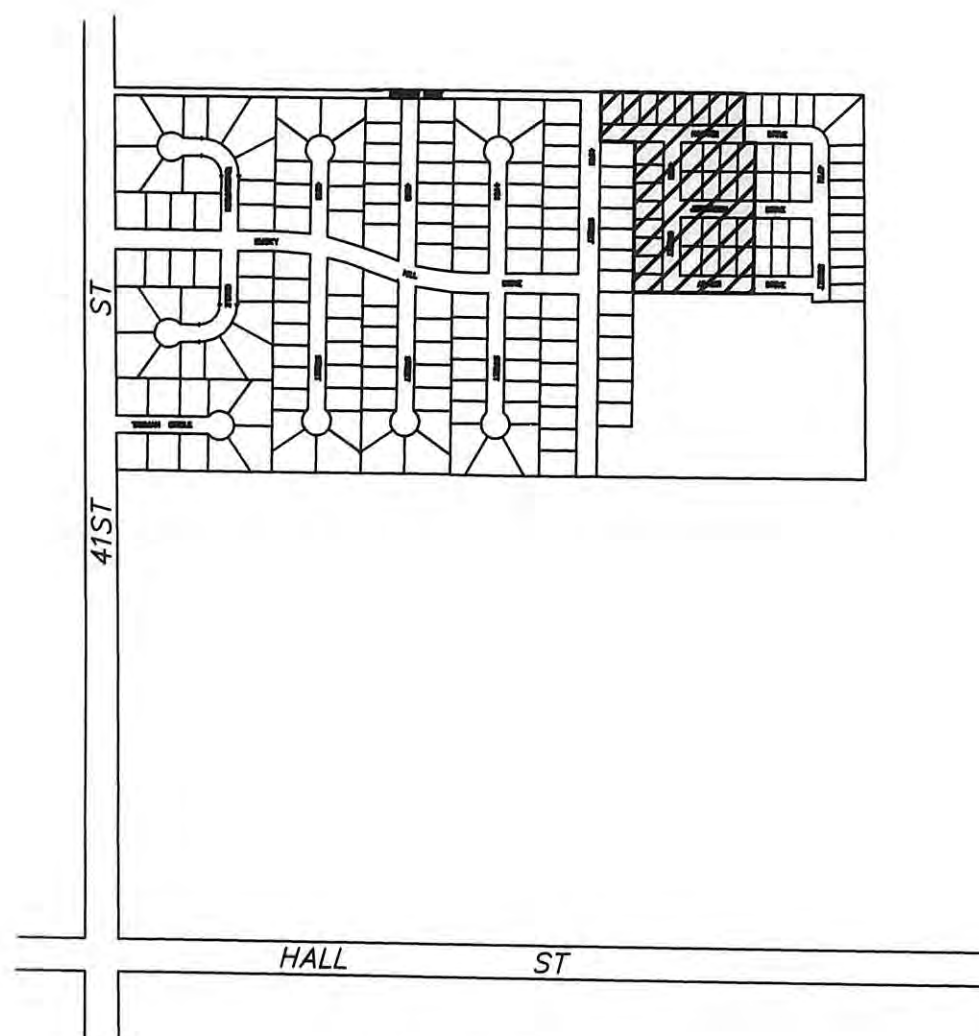


N90°00'00"W
1327.46'

41ST

LEGEND

■ Set 1/2" Bar w/ Cap
Stamped "RUDER RLS-918"



Location Map

REVIEW SURVEYOR'S CERTIFICATE:

State of Kansas, County of Ellis, ss:

I hereby certify that the review of this plat was found to be in compliance with the requirements of K.S.A. 58-2005. Approved this 19th day of January, 2005.



APPROVALS:

This plat, Replat of a Portion of 46th Street First Addition, has been submitted to and approved by the Hays Planning Commission this 17th day of January, 2005.

Lynn Smith
CHAIRMAN
Dore Baldea
SECRETARY

The dedications shown on this plat accepted by the City Commission of the City of Hays, Kansas, this 27th day of January, 2005.

Sharon Gorman
MAYOR

ATTEST: Mark E. Tolby, City Clerk

John T. Bird, Attorney for the City of Hays

RECORDED:

State of Kansas, County of Ellis, ss:

This is to certify that this instrument was filed for record in the Register of Deeds Office on the 11th day of February, 2005, in Book Calc. Page 417.



Rebecca Hertz
REGISTER OF DEEDS
Mary Owsenking
DEPUTY

Agent BK:612 Pg:756
Replat + Re-Dedic. BK:612 Pg:762
Resol. # 2005-001 BK:612 Pg:770
Resol. # 2005-002 BK:612 Pg:772

LEGAL DESCRIPTION

That part of the West Half of the Southeast Quarter of Section 20, Township 13 South, Range 18 West of the 6th Principal Meridian, Ellis County, Kansas, described as follows:

Commencing at the southwest corner of the Southeast Quarter of said Section 20; thence on an assumed bearing of North 01 degrees 02 minutes 46 seconds East, along the west line of said Southeast Quarter, a distance of 1,734.60 feet to the point of beginning of the land to be described; thence continuing on the last described course a distance of 495.00 feet; thence South 88 degrees 57 minutes 14 seconds East a distance of 170.00 feet; thence North 01 degrees 02 minutes 46 seconds East a distance of 40.00 feet; thence South 88 degrees 57 minutes 14 seconds East a distance of 520.00 feet; thence South 01 degrees 02 minutes 46 seconds West a distance of 415.00 feet; thence North 88 degrees 57 minutes 14 seconds West a distance of 120.00 feet; thence North 88 degrees 57 minutes 14 seconds West a distance of 170.00 feet to the point of beginning. This tract contains 6.886 acres.

STREETS & EASEMENTS:

Streets, drives, and circles as shown on this plat and not heretofore dedicated to and for public use are hereby dedicated. Easements are hereby dedicated for public use, as utility easement right-of-way, which are shown as lying between the dashed lines in widths indicated and as set forth on this plat, and said easements may be employed for the purpose of installing, repairing and maintaining gas lines, electric lines, telephone lines, and all other forms and types of public utilities, now or hereafter used, by the public over, under and along the strips marked "Utility Esm't."

OWNER'S CERTIFICATE:

Know all men by these presents, that we, the undersigned property owners of the land above described have caused the same to be surveyed and platted into Lots, Blocks, Streets, Drives, Circles and Easements, the same to be known as "Replat of a Portion of 46th Street First Addition", in Hays, Kansas. The Streets, Drives and Circles are hereby dedicated to and for the use of the public, and the easements as indicated on the accompanying plat are hereby granted to the public for the purpose of constructing, operating, maintaining, and repairing all public utilities.

Western Plains Service Corporation

By James Desbien
James Desbien, President

NOTARY CERTIFICATE:

State of Kansas, County of Ellis, ss:

Be it remembered that on this 21st day of January, 2005, before me, a Notary Public in and for said County and State, came James Desbien, President of Western Plains Service Corp. to me personally known to be the same person who executed the foregoing instrument of writing and duly acknowledged the execution of same. In testimony whereof, I have hereunto set my hand and affixed my notarial seal, the day and year above written.

Carrie Gottschalk
Notary Public

My Commission Expires: 6-30-06



SURVEYOR'S CERTIFICATE:

I, Harvey Ruder, a Registered Land Surveyor in the State of Kansas, do hereby certify this Plat to be true and correct to the best of my knowledge.

Harvey Ruder
Harvey Ruder
1-17-05
Date



RUDER ENGINEERING
& SURVEYING, LLC
1376 Butterfield Trail Rd.
Hays, Kansas 67601
785-628-8134