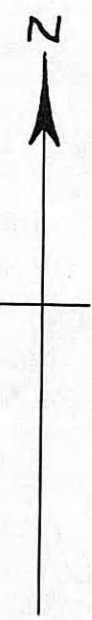
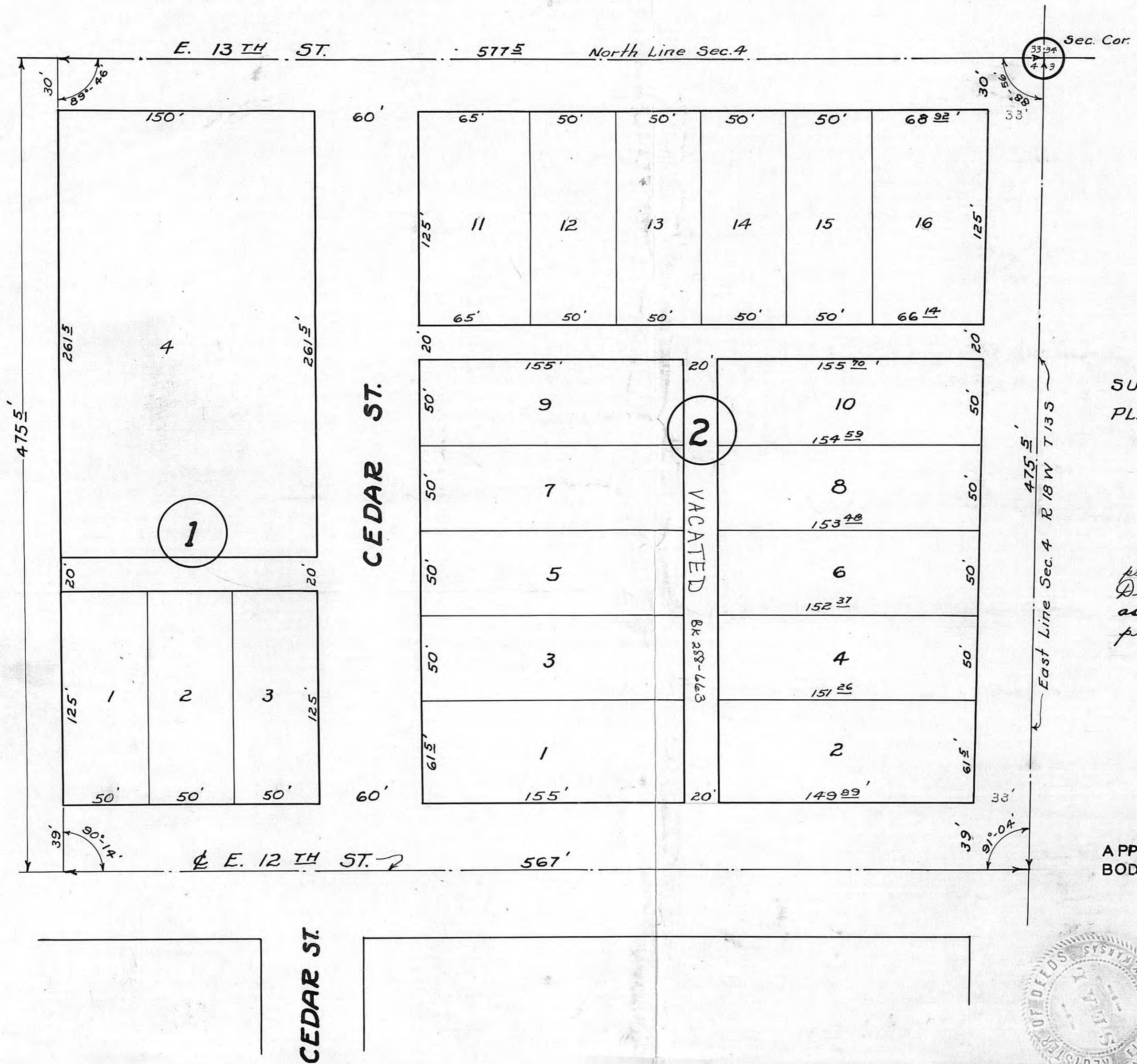


5

A. BRUMITT SUB - DIVISION HAYS, KANSAS



scale 1" = 50'

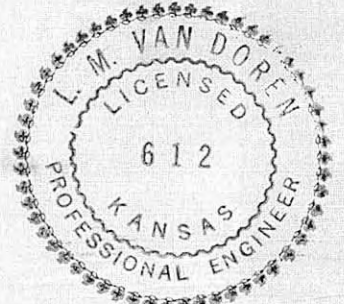
SURVEYED: Aug. 18, 1949

PLATTED: Aug. 27, 1949

By:

SERVIS & VAN DOREN
CONSULTING ENGINEERS
Hays, Kans.

I certify this to be a correct plat of the G. Brumitt Sub-Division of the City of Hays, Kansas, as same was surveyed and platted by me.
L. M. Van Doren



APPROVED BY THE GOVERNING BODY OF THE CITY OF HAYS KANSAS

9 SEPTEMBER 1949



445 Dec 7 1949
2 Plats 5
Alma Rome
3.00

For Deeds see p. 43
& index page 434