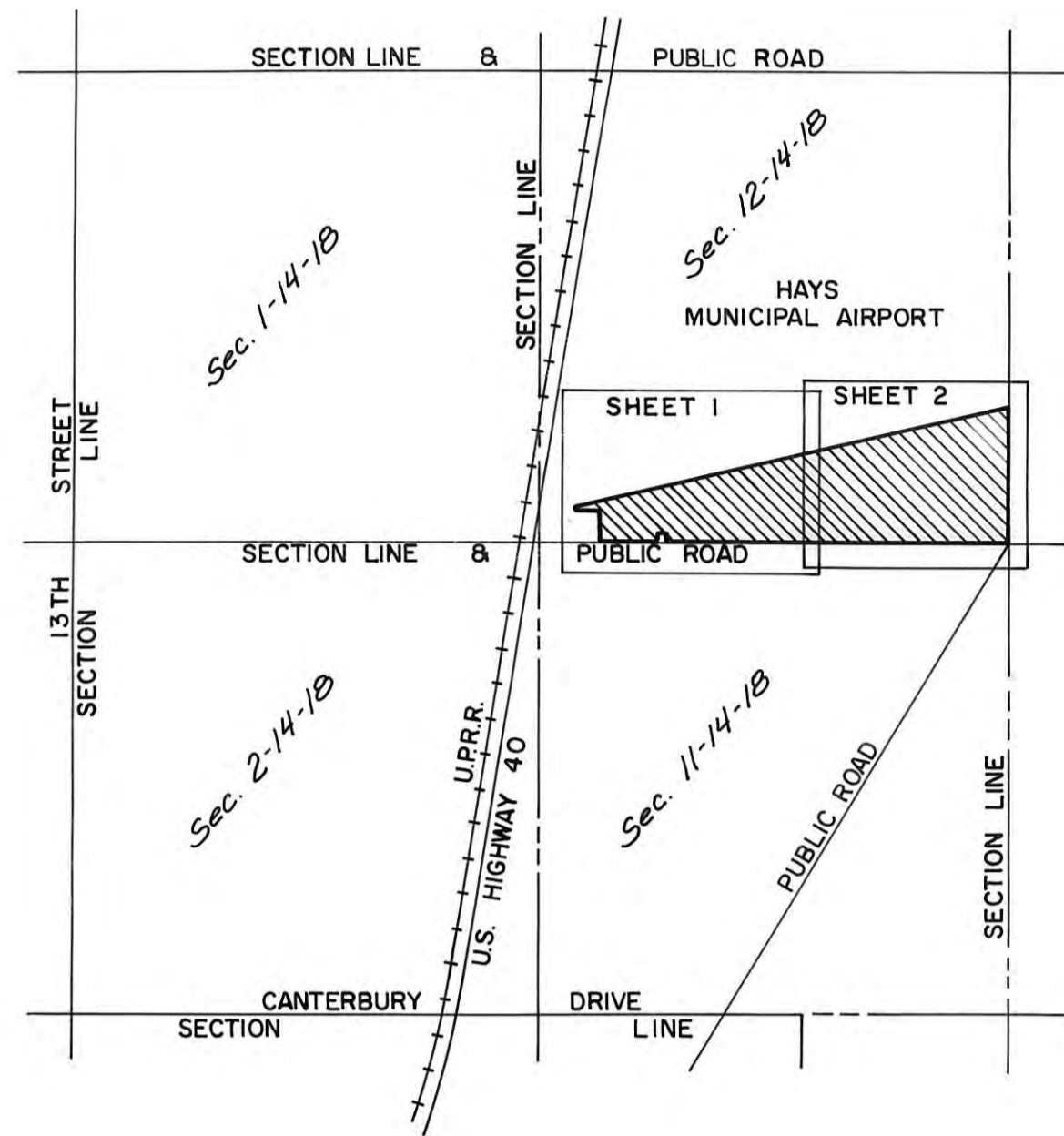
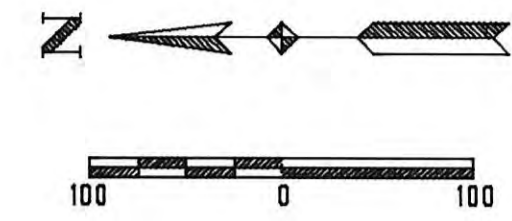
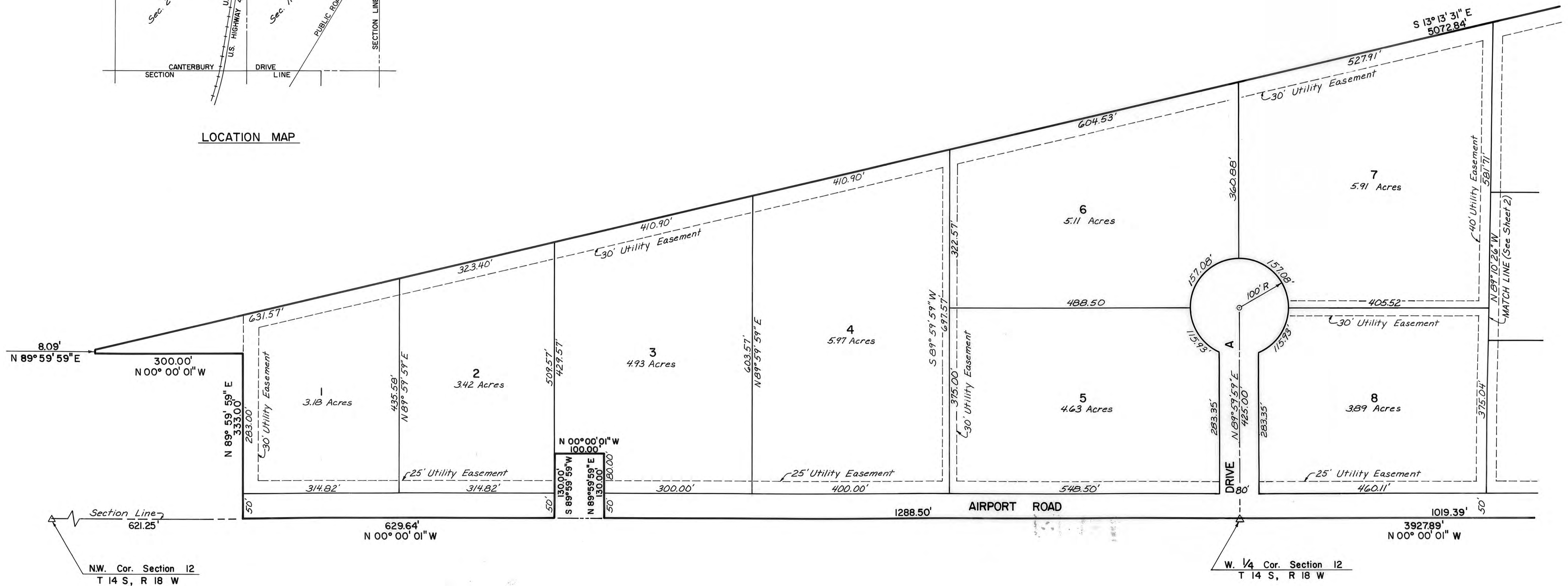


# PLAT OF AIRPORT INDUSTRIAL PARK



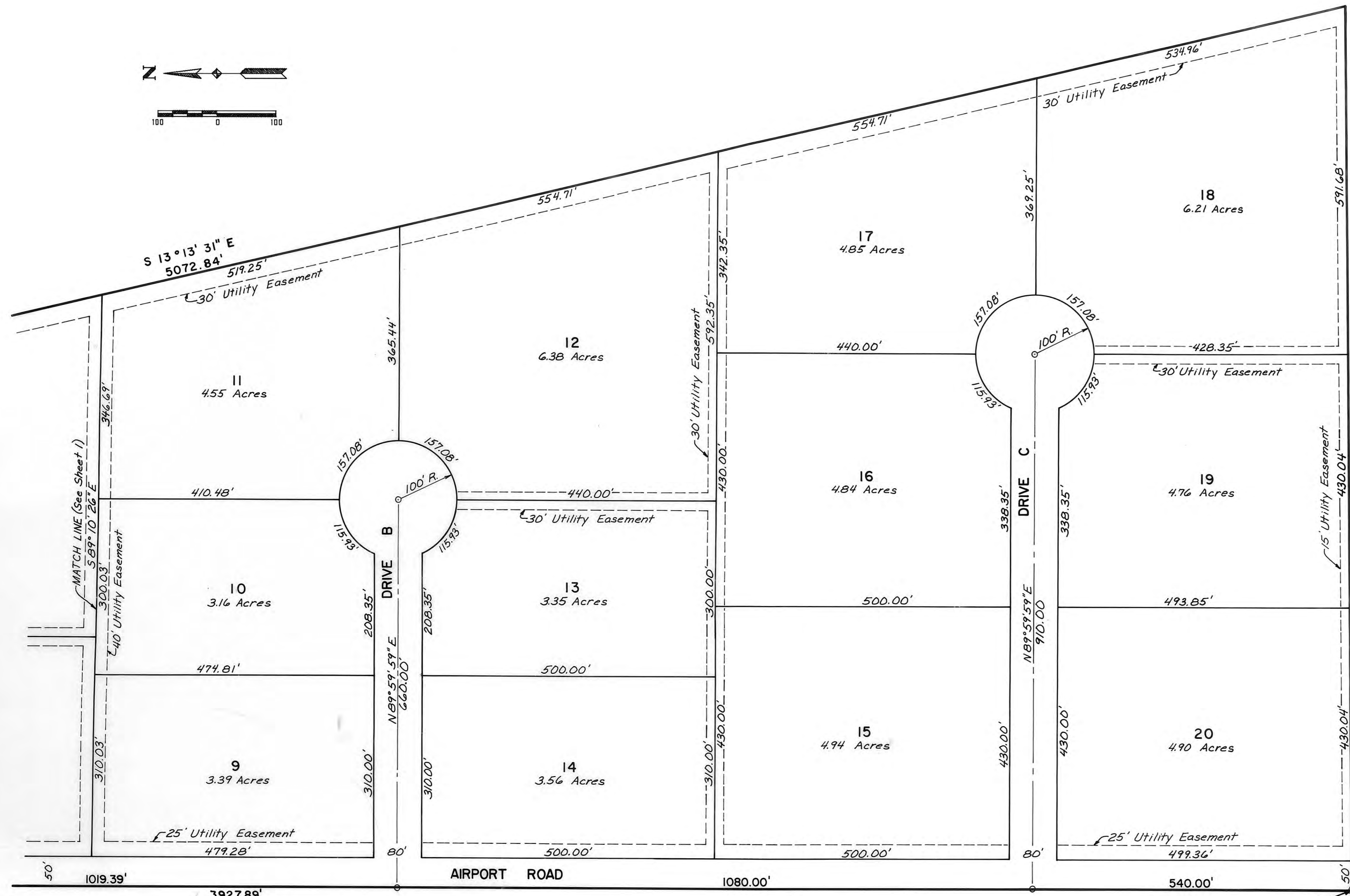
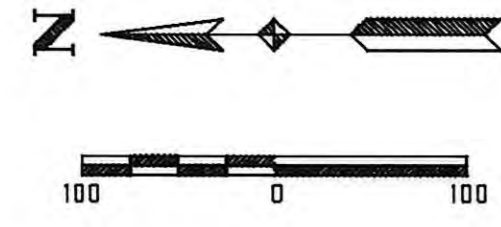
LOCATION MAP



N.W. Cor. Section 12  
T 14 S, R 18 W

W. 1/4 Cor. Section 12  
T 14 S, R 18 W

# PLAT OF AIRPORT INDUSTRIAL PARK



### LEGAL DESCRIPTION

A tract of land situated in the West Half (W 1/2) of Section Twelve (12), Township Fourteen (14) South, Range Eighteen (18) West of the Sixth Principal Meridian in Ellis County, Kansas, and more particularly described as follows:  
Beginning at the Southwest Corner of Section 12, Township 14 South, Range 18 West, THENCE North along the West line of said Section 12 on an assumed bearing of N 0°0'01" W, a distance of 3927.89 feet; THENCE on a bearing of N 89°59'59" E, a distance of 130.00 feet; THENCE on a bearing of N 0°0'01" W, a distance of 100.00 feet; THENCE on a bearing of S 89°59'59" W, a distance of 130.00 feet to a point on the West line of said Section 12; THENCE N 0°0'01" W along the West line of said Section 12, a distance of 629.64 feet; THENCE on a bearing of N 89°59'59" E, a distance of 333.00 feet; THENCE on a bearing of N 0°0'01" W, a distance of 300.00 feet; THENCE on a bearing of N 89°59'59" E, a distance of 8.09 feet; THENCE on a bearing of S 13°13'31" E, a distance of 5072.84 feet to a point on the South line of Section 12, Township 14 South, Range 18 West; THENCE on a bearing of S 89°15'58" W along said South line, a distance of 1501.76 feet to the Southwest Corner of said Section 12 and the point of beginning. Said tract contains 102.192 acres more or less.

### STREETS AND EASEMENTS

Streets as shown on this plat and not heretofore dedicated to and for public use are hereby dedicated.

Easements are hereby dedicated for public use, as utility easement right-of-way, which are shown as lying between the dashed lines in widths indicated and as set forth on this plat, and said easements may be employed for the purpose of installing, repairing and maintaining gas lines, electric lines, telephone lines, and all other forms and types of public utilities, new or hereafter used, by the public over, under and along the strips marked "Utility Esm't".

### OWNER'S CERTIFICATE

Know all men by these presents, that the City of Hays, Kansas, property owners of the land above described, have caused the same to be surveyed and platted into lots, streets and easements, the same to be known as "Airport Industrial Park", in Ellis County, Kansas. The streets are hereby dedicated to and for the use of the public, and easements as indicated on the accompanying plat are hereby granted to the public for the purpose of constructing, operating, maintaining and repairing all public utilities.

CITY OF HAYS, KANSAS

*Mike Billings*  
Mayor

*Annexa Godshawk*  
City Clerk

ELLIS COUNTY ECONOMIC DEVELOPEMENT CORPORATION (Lessee)

*Tom J. Dwyer*  
President

ALFRED GEIST (lessee)

*Alfred Geist*

### NOTARY CERTIFICATE

State of Kansas, County of Ellis, ss

Be it remembered that on this 20 day of December, 1986, before me, a notary in and for said County and State, came Mike Billings, Mayor, and Annexa Godshawk, City Clerk, of the City of Hays, Kansas, and Tom J. Dwyer, President of the Ellis County Economic Development Corporation (lessee) and Alfred Geist (lessee), to me personally known to be the same person (s) who executed the foregoing instrument of writing and duly acknowledged the execution of same. In testimony whereof, I have hereunto set my hand and affixed my notarial seal the day and year above written.

My Commission expires

*Susan Billings*  
Notary Public

### SURVEYOR'S CERTIFICATE

I, James R. Swanson, a licensed professional Engineer, do hereby certify this Plat to be true and correct to the best of my knowledge.

*James R. Swanson*  
James R. Swanson, P.E.  
BUCHER, WILLIS & RATLIFF  
Hays, Kansas

### APPROVALS:

This plat has been submitted to and approved by the Hays-Ellis County Planning Commission this 19 day of August, 1986.

*Donald Banton* Secretary  
*Blenn J. Stumiller* Chairman

The dedication shown on this plat is accepted by the City Commission of the City of Hays, Kansas, this 20 day of August, 1986.

ATTEST:  
*Annexa Godshawk* City Clerk  
*Mike Billings* Mayor

The dedication shown on this plat is accepted by the County Commission of Ellis County, Kansas, this 15 day of January, 1986.

ATTEST:  
*James J. M. Cullick* County Clerk  
*Bliss E. Dulack* Chairman

### RECORDED:

State of Kansas, County of Ellis, ss

This is to certify that this instrument was filed for record in the Register of Deeds Office on the 15 day of June, 1986 in Book 323 Page 323

*Mary Ann Wing* Deputy  
*Rose Ann Rupp* Register of Deeds



Plat & Subl. - 357 Page 10  
Rec'd - 357 Page 16



BUCHER, WILLIS & RATLIFF