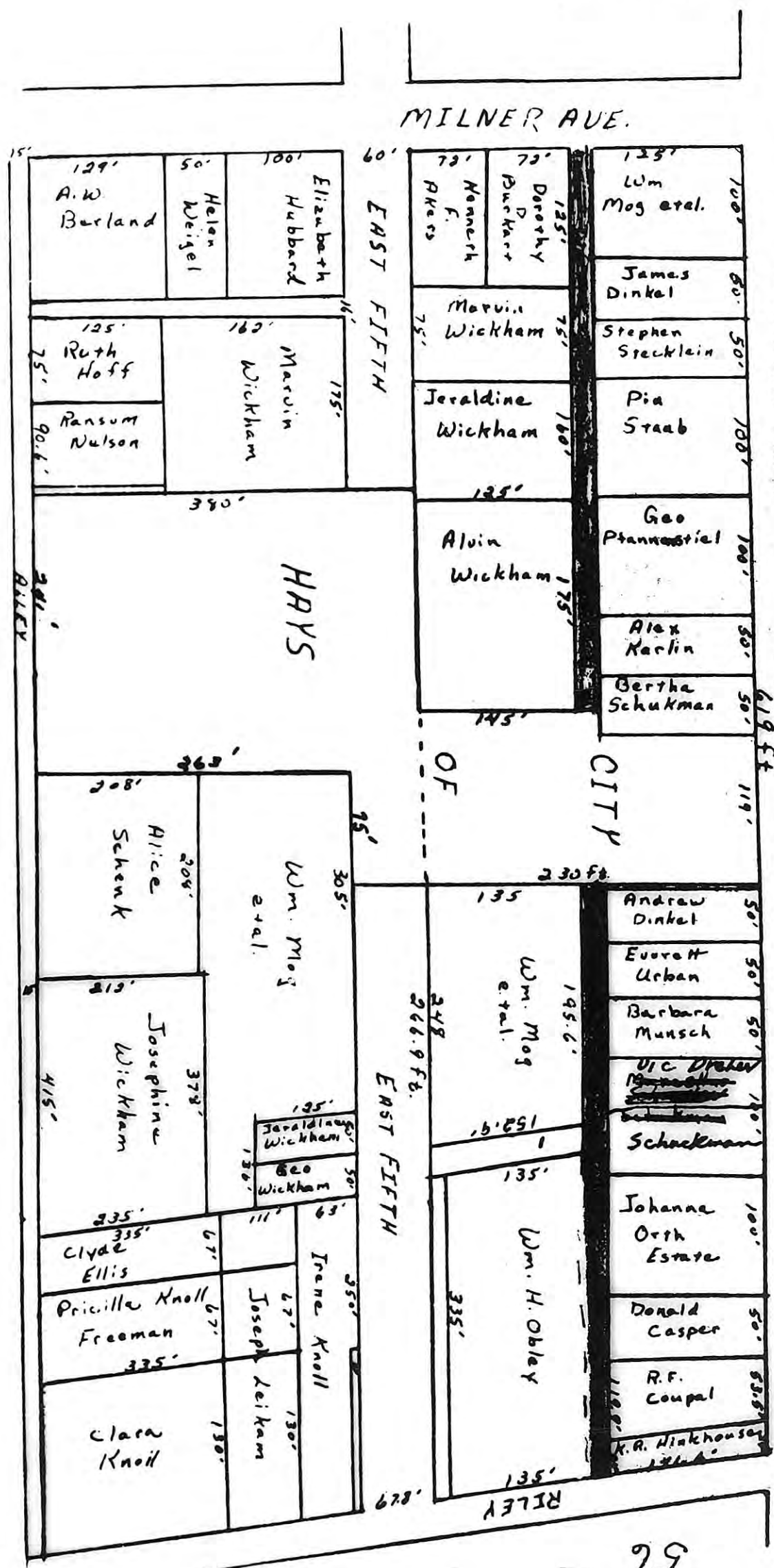


Plat Alley  
Between 526 Sts.  
Milner & Riley

Planning Comm.



STATE OF KANSAS }  
ELLIS COUNTY }  
This instrument was filed for record  
OCT 28 1963  
8:00 AM  
2.11  
Fees \$1.25

Plat Book 87  
Page 87

56

THIS IS A DIRECT PHOTOGRAPHIC REPRODUCTION OF THE OFFICIAL INSTRUMENT (RECORDED PLAT).

THIS REPRODUCTION WAS MADE BY BUCHER & WILLIS, CONSULTING ENGINEERS, PLANNERS & ARCHITECTS IN NOVEMBER, 1979.