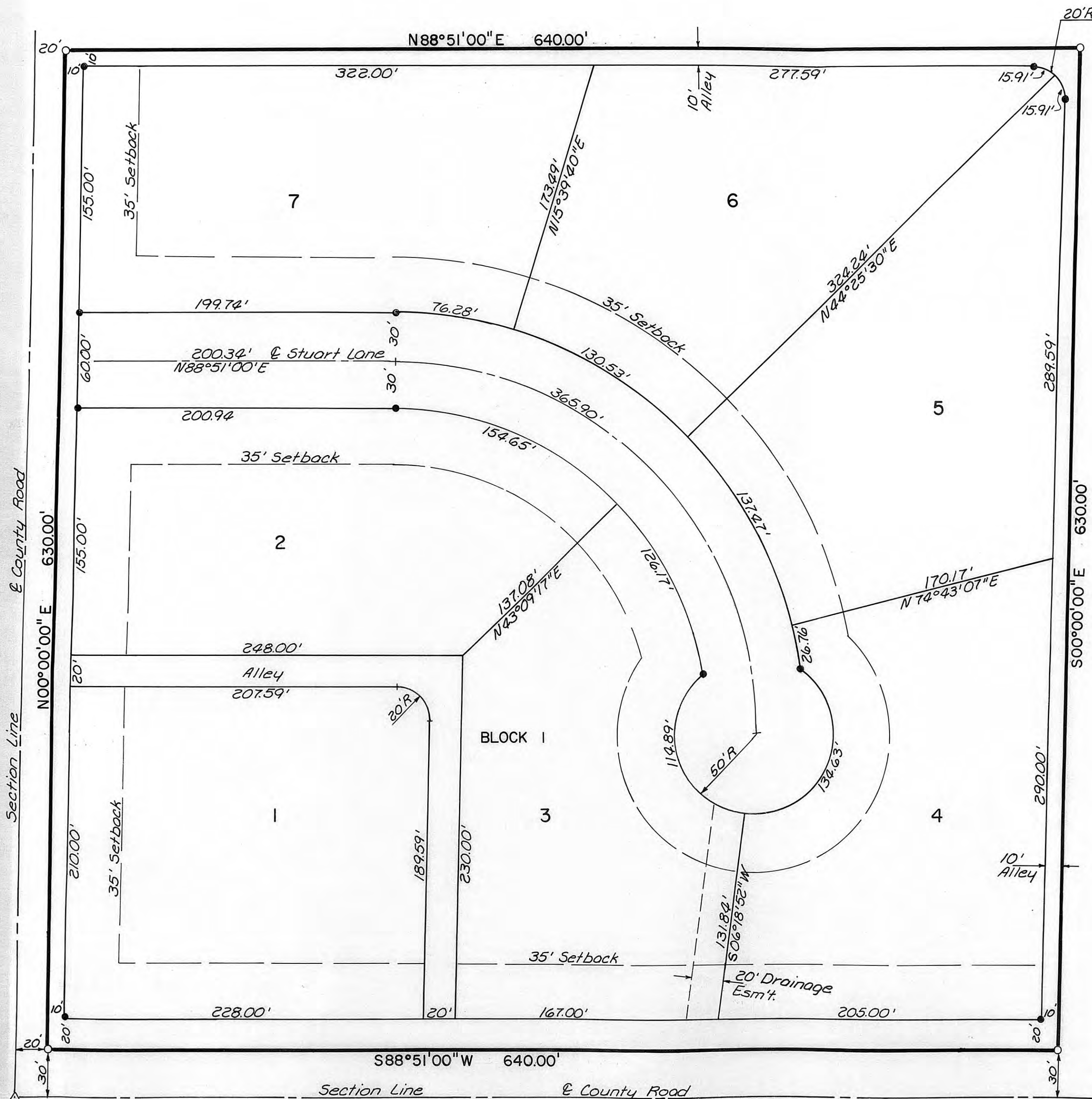


N

APPLEHANS FIRST ADDITION

Scale: 1" = 50'
 O Pin Found
 ● Pin Set
 ▲ Section Corner (Found)

Curve Data (Arc Defn.)
 $\Delta = 91^{\circ}09'$
 $R = 230.00'$
 $T = 234.66'$
 $L = 365.90'$



DESCRIPTION

A tract of land in the Southwest Quarter of Section Thirty-one (31), Township Thirteen (13) South, Range Seventeen (17) West of the Sixth Principal Meridian in Ellis County, Kansas, more particularly described as follows:
 Beginning at a point 30 feet North and 20 feet East of the Southwest corner of the Southwest Quarter of Section 31; Thence $N00^{\circ}00'00''E$ a distance of 630.00 feet parallel with the West line of said section; Thence $N88^{\circ}51'E$ a distance of 640.00 feet parallel with the South line of said section; Thence $500^{\circ}00'E$ a distance of 630.00 feet parallel with the West line of said section; Thence $588^{\circ}51'W$ a distance of 640.00 feet parallel with the South line of said section to the point of beginning. Said tract contains 9.254 acres more or less.

EASEMENTS

Easements are hereby dedicated for public use, as utility easement right-of-way which are shown as lying between the dashed lines in widths indicated and as set forth on this plat unless otherwise noted, and said easements may be employed for the purpose of installing, repairing and maintaining gas lines, electric lines, telephone lines, and all other forms and types of public utilities now or hereafter used by the public over, under and along the strips marked "easements."

STREETS

Streets and alleys shown on this plat and not heretofore dedicated to and for public use are hereby so dedicated.

Be it known that a legal petition, signed by Paul Geist, and others, was filed to vacate a portion of the Plat and Dedication of Applehans First Addition to the County of Ellis, Kansas.

Whereupon, that petition and public notice announcing a Public Hearing on this matter was published 3 consecutive weeks in the Ellis County Star, beginning on Thursday, August 13, 1992, in compliance with K.S.A. 58-2613 and K.S.A. 58-2614.

As specified in the above statutes, a hearing was held at 10:00 A.M. on Monday, August 31, 1992, in the Commission Chambers at the Ellis County Courthouse.

The members of the Board of Ellis County Commissioners, whose names and signatures are listed below, have been satisfied that the public will suffer no loss or inconvenience by such vacation and that no private rights will be injured or endangered by this vacation.

THEREFORE, The Ellis County Commission orders vacation of the Plat and Dedication of Applehans First Addition to the County of Ellis, Kansas, including all lots, streets, alleys, and drainage easements, except for the following:

- Lot 12, 3, 5, 4, 7
- Lot 1
- Lot 2
- Lot 3
- Lot 4
- Lot 5
- Lot 6
- Lot 7

- A. Lot 4.
- B. A ten foot easement along the north, east and west boundaries.
- C. A 20 foot easement along the south boundary.

We have taken action to vacate at the conclusion of the above-mentioned hearing, and therefore sign this vacation order, this 31st day of August, 1992.

BOARD OF ELLIS COUNTY COMMISSIONERS:

Allen J. Winkel
 Allen J. Winkel, Chairman

Thomas M. Wasinger
 Thomas M. Wasinger, Member

Guy I. Windholz
 Guy I. Windholz, Member

ATTEST:

Peggy J. McCullick
 Peggy J. McCullick
 Ellis County Clerk

Professional Engineer in the State of Kansas
 that the
 or under my
 have been
 documents shown
 est of my
 A.D. 1977.
Norman P. Formick P.E.
 Formick P.E.
 Engineer

owners of
 ed the same
 Courts, a
 on, a
 nd Avenue
 indicated on
 e of

a notary
 Applehans
 regoing
 In testimony
 of the day
 Miller III

Expires Mar. 22, 1991

Approved by
 Smith

CERTIFICATE OF THE COUNTY COMMISSION

STATE OF KANSAS } SS
 COUNTY OF ELLIS }

The dedications shown on this plan accepted by the County Commission of the County of Ellis, Kansas, this 27th day of June, A.D. 1977.

Emerald J. Rome
 County Clerk

James E. Schneider
 Chairman

CERTIFICATE OF THE REGISTER OF DEEDS

STATE OF KANSAS } SS
 COUNTY OF ELLIS }

This is to certify that this instrument was filed for record in the Register of Deeds office on the 27th day of June, A.D. 1977 in Book 26, Page 51.

Virginia Herzig
 Register of Deeds

Rose Ann Rupp
 Deputy

Entered on transfer record this ___ day of ___ A.D. 1977. ___ County Clerk

Plat & Dedication - 283 page 56
 Resolution - 283 page 58

ORIGINAL PLAT
 APPLEHANS FIRST ADDITION

TO
 ELLIS COUNTY, KANSAS

PREPARED BY

HUBERT CASPAR JR
 ENGINEERS ARCHITECTS
 Junction City Hays City
 KANSAS