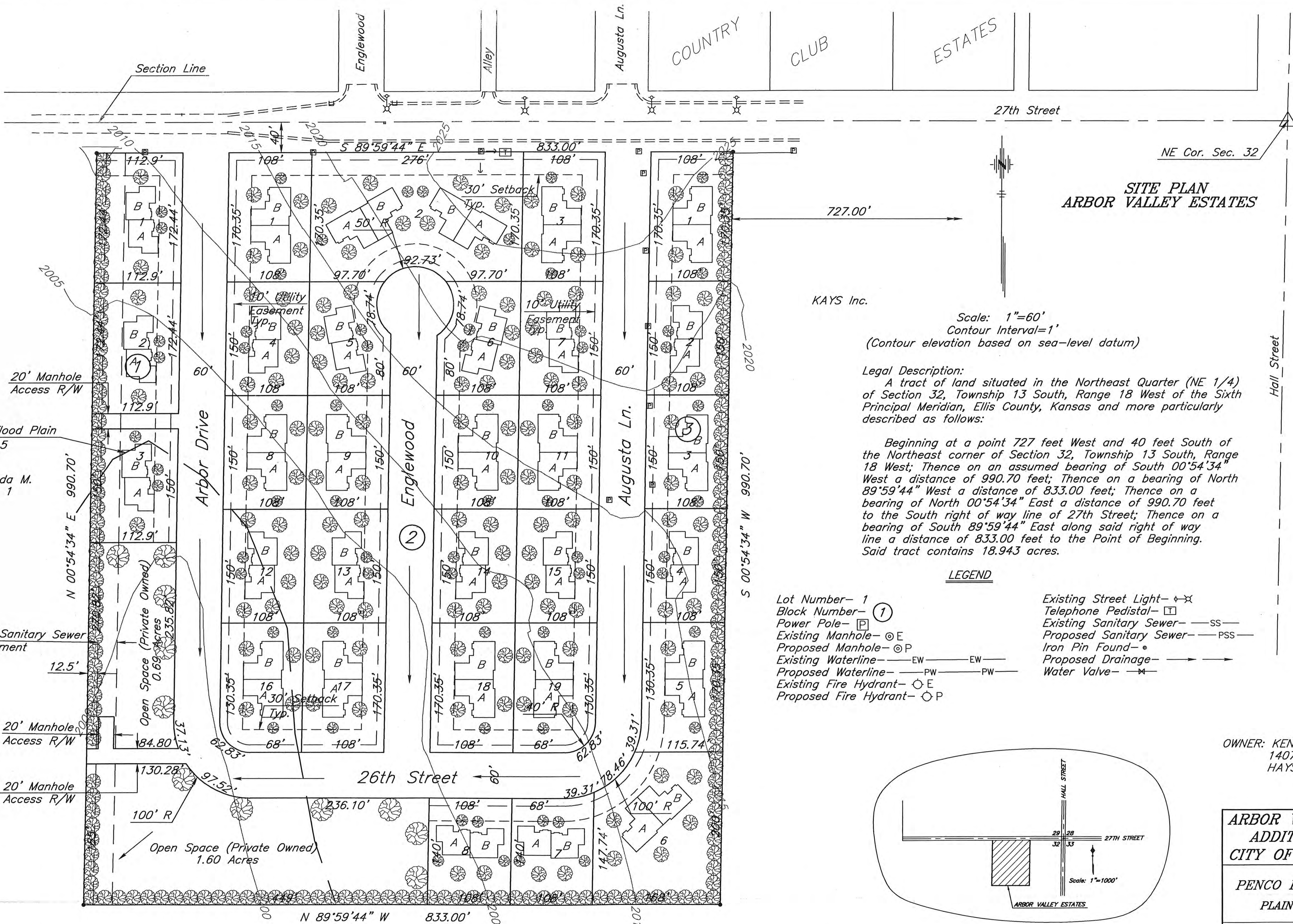


S:\BARR\AC21\SURVEY\1\S096048\SITE.DWG



**SITE PLAN
ARBOR VALLEY ESTATES**

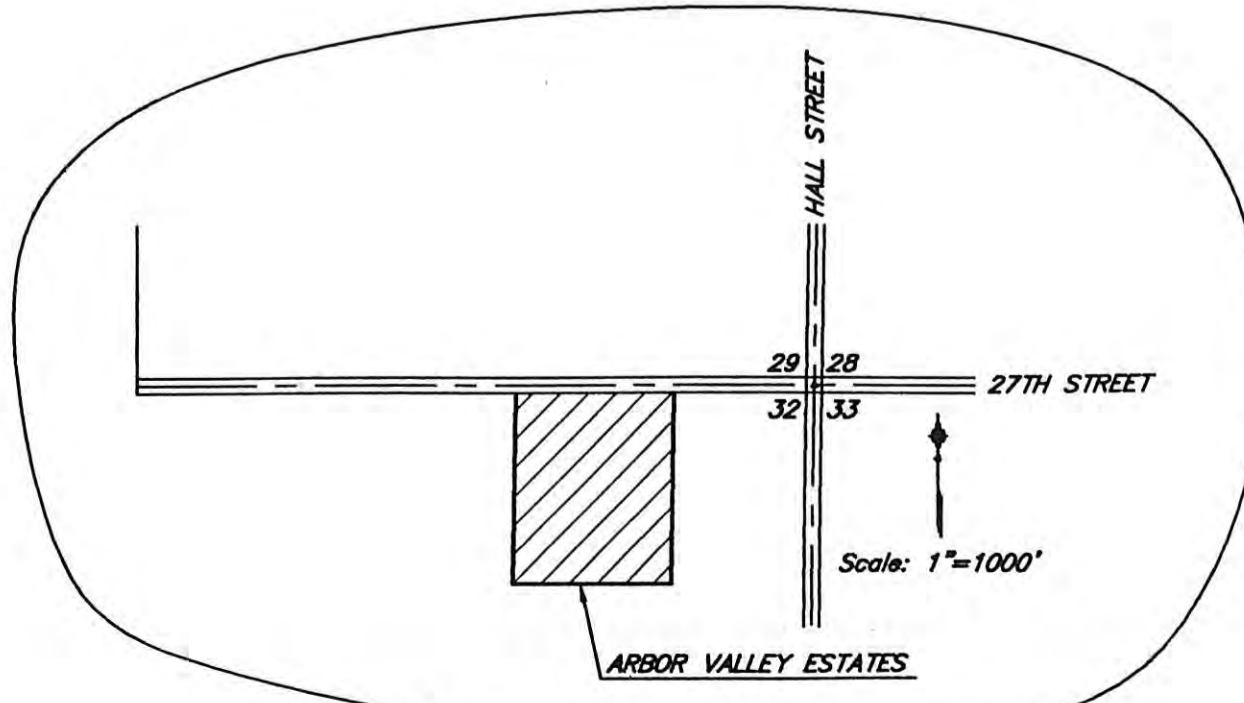
Scale: 1"=60'
Contour Interval=1'
(Contour elevation based on sea-level datum)

Legal Description:
A tract of land situated in the Northeast Quarter (NE 1/4) of Section 32, Township 13 South, Range 18 West of the Sixth Principal Meridian, Ellis County, Kansas and more particularly described as follows:

Beginning at a point 727 feet West and 40 feet South of the Northeast corner of Section 32, Township 13 South, Range 18 West; Thence on an assumed bearing of South 00°54'34" West a distance of 990.70 feet; Thence on a bearing of North 89°59'44" West a distance of 833.00 feet; Thence on a bearing of North 00°54'34" East a distance of 990.70 feet to the South right of way line of 27th Street; Thence on a bearing of South 89°59'44" East along said right of way line a distance of 833.00 feet to the Point of Beginning. Said tract contains 18.943 acres.

LEGEND

- Lot Number- 1
- Block Number- ①
- Power Pole- [P]
- Existing Manhole- ⊙ E
- Proposed Manhole- ⊙ P
- Existing Waterline- — EW — EW
- Proposed Waterline- — PW — PW
- Existing Fire Hydrant- ○ E
- Proposed Fire Hydrant- ○ P
- Existing Street Light- [X]
- Telephone Pedestal- [T]
- Existing Sanitary Sewer- — SS —
- Proposed Sanitary Sewer- — PSS —
- Iron Pin Found- •
- Proposed Drainage- [→]
- Water Valve- [V]



STATE OF KANSAS }
ELLIS COUNTY }
his instrument was filed for record
MAY 16 1997
3:15 p.m. recorded in
County Clerk's Office
Ellis County, Kansas
20



OWNER: KENNETH J. HERRMAN
1407 MAIN STREET
HAYS, KS 67601

**ARBOR VALLEY ESTATES
ADDITION TO THE
CITY OF HAYS, KANSAS**

**PENCO ENGINEERING P.A.
PLAINVILLE, KANSAS**

DESIGN BY: DKO DRAWN BY: BDM SHEET OF
CHECKED BY: JJD Proj. #S096048 1-1

Capuchin Province of Mid America Inc. (TMP)