

ARNHOLDS SECOND ADDITION

SURVEYOR'S CERTIFICATE

STATE OF KANSAS }
COUNTY OF ELLIS } SS

I, Thomas W. McCormick, a licensed professional engineer in the State of Kansas, do hereby certify this plat to be true and correct to the best of my knowledge; and that all iron bars as shown have been accurately set. Survey completed in August 1977.

Thomas W. McCormick
Thomas W. McCormick, P.E.



OWNER'S CERTIFICATE

STATE OF KANSAS }
COUNTY OF ELLIS } SS

Know all men by these presents, that we, the undersigned property owners of the land as above set forth in the Surveyor's Certificate, have caused the same to be surveyed and platted into Lots, Blocks, Easements, Streets, and Alleys, the same to be known as Arnhold's Second Addition, an addition to the City of Hays, Ellis County, Kansas; the streets and alleys are hereby dedicated to and for the use of the public, and easements as indicated on the accompanying plat are hereby granted to the public for the purpose of constructing, operating, maintaining, and repairing all public utilities.

Richard A. Arnhold
Richard A. Arnhold

NOTARY CERTIFICATE

STATE OF KANSAS }
COUNTY OF ELLIS } SS

Be it remembered that on this 1st day of September, 1977, before me, a notary public in and for the said County and State, came Richard A. Arnhold, to me personally known to be the same person who executed the foregoing instrument of writing and duly acknowledged the execution of same. In testimony whereof, I have hereunto set my hand and affixed my notarial seal the day and year above written.

My Commission Expires: June 16, 1981

Karla Fruidenberger
Notary Public

CERTIFICATE OF THE PLANNING COMMISSION

STATE OF KANSAS }
COUNTY OF ELLIS } SS

This plat of Arnhold's Second Addition has been submitted to and approved by the Hays Planning Commission this 1st day of September, 1977.

Robert J. Binder - Chairman

Margaret E. Smith - Secretary

CERTIFICATE OF THE CITY COMMISSION

STATE OF KANSAS }
CITY OF HAYS } SS

The dedications shown on this plat accepted by the City Commission of the City of Hays, Kansas, this 1st day of September, 1977.

City of Hays, Kansas

Attest:

George Phillip
George Phillip - Mayor

Dorothy Soderblom
Dorothy Soderblom - City Clerk

CERTIFICATE OF THE REGISTER OF DEEDS

STATE OF KANSAS }
COUNTY OF ELLIS } SS

This is to certify that this instrument was filed for record in the Register of Deed office on the 1st day of January, 1978 in Book 2A, Page 59.

Plat added - 285p 692 Virginia Hays
Resolution 285p 496 Register of Deeds

Rae Ann Rupp
Deputy

Entered on transfer record this 1st day of September, 1977.

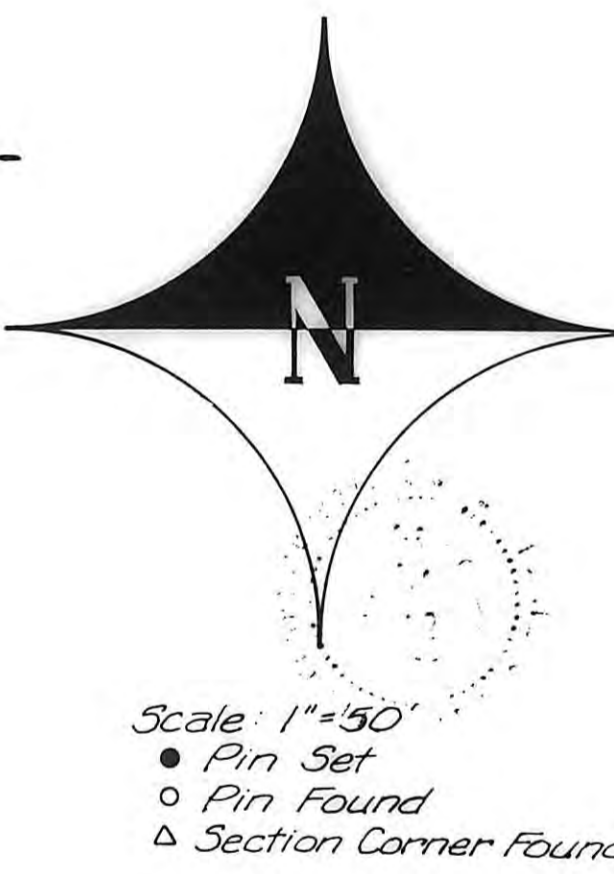
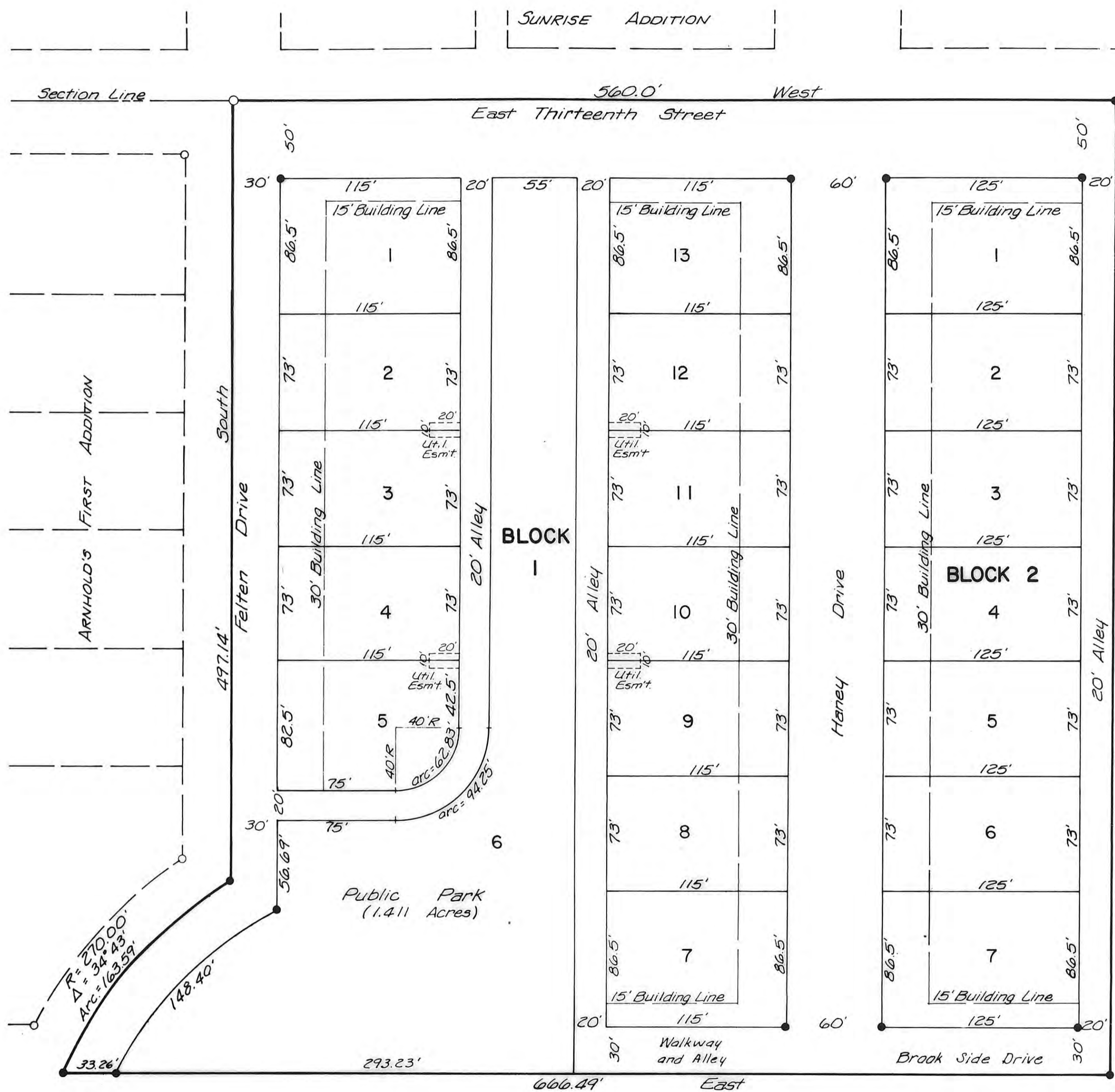
County Clerk

EASEMENTS

Easements are hereby dedicated for public use, as utility easement right-of-way which are shown as lying between the dashed lines in widths indicated and as set forth on this plat unless otherwise noted, and said easements may be employed for the purpose of installing, repairing and maintaining gas lines, electric lines, telephone lines, and all other forms and types of public utilities now or hereafter used by the public over, under, and along the strips marked "easements."

STREETS

Streets and alleys shown on this plat and not heretofore dedicated to and for public use are hereby so dedicated.



DESCRIPTION

A tract of land in the Northeast Quarter of Section 3, Township 14 South, Range 18 West of the Sixth Principal Meridian in Ellis County, Kansas, and further described as follows: Beginning at a point on the North line of said Section 3, a distance of 993.20 feet West of the Northeast corner of said Section 3, said point of beginning also being the Northeast corner of a platted tract of ground known as Arnhold's First Addition to the City of Hays, Kansas; thence South with an internal angle of 90°00' a distance of 497.14 feet on the east line of said platted tract; thence Southwesterly along a curve with a radius of 270 feet and a central angle of 34°43', an arc distance of 163.59 feet, the radius point of said curve being 853.06 feet West and 727.93 feet South of the Northeast corner of said Section 3; thence East parallel to the North line of said Section 3, a distance of 666.49 feet; thence North with an internal angle of 90°00', a distance of 618.00 feet to a point on the North line of said Section 3; thence West on the North line of said Section 3, a distance of 560.00 feet to the point of beginning. Said tract contains 8.123 acres more or less.

THIS IS A DIRECT PHOTOGRAPHIC REPRODUCTION OF THE OFFICIAL INSTRUMENT (RECORDED PLAT).
THIS REPRODUCTION WAS MADE BY BUCHER & WILLIS, CONSULTING ENGINEERS, PLANNERS & ARCHITECTS IN AUGUST, 1979.

ORIGINAL PLAT
ARNHOLD'S SECOND ADDITION

AUGUST 1977
HUBERT CASPAR JR
ENGINEERS ARCHITECTS
JUNCTION CITY HAYS CITY
KANSAS
Des.: T. McCormick Dr.: B. Sherraden