

**PLAT OF  
ARNHOLD'S THIRD ADDITION  
ELLIS COUNTY, KANSAS**

**LEGAL DESCRIPTION:**

A tract of land situated in the Northeast Quarter (NE $\frac{1}{4}$ ) of Section 3, Township 14 South, Range 18 West of the Sixth Principal Meridian in Ellis County, Kansas, and more particularly described as follows:

Beginning at the Northeast Corner of Section 3, Township 14 South, Range 18 West; THENCE on an assumed bearing of S 0°00'00" W along the East line of said Northeast Quarter (NE $\frac{1}{4}$ ), a distance of 1,204.83 feet; THENCE S 90°00'00" W, a distance of 383.05 feet; THENCE N 0°43'19" W, a distance of 581.91 feet; THENCE S 89°16'41" W, a distance of 35.00 feet; THENCE N 0°43'19" W, a distance of 618.00 feet; THENCE N 89°16'41" E along the North line of said Section 3, a distance of 433.20 feet, to the point of beginning. Said tract contains 11.278 acres, more or less.

**STREETS AND EASEMENTS:**

Streets, boulevards, drives and alleys as shown on this plat and not heretofore dedicated to and for public use are hereby dedicated.

Easements are hereby dedicated for public use, as utility easement right-of-way, which are shown as lying between the dashed lines in widths indicated and as set forth on this plat, and said easements may be employed for the purpose of installing, repairing and maintaining gas lines, electric lines, telephone lines, and all other forms and types of public utilities, new or hereafter used, by the public over, under and along the strips marked "Utility Esm't".

**OWNER'S CERTIFICATE:**

Know all men by these presents, that we, the undersigned property owners of the land above described, have caused the same to be surveyed and platted into lots, blocks, streets, alleys and easements, the same to be known as "Arnhold's Third Addition" in Ellis County, Kansas. The streets and alleys are hereby dedicated to and for the use of the public, and easements as indicated on the accompanying plat are hereby granted to the public for the purpose of constructing, operating, maintaining and repairing all public utilities.

OWNER (Lot 5, Block 1 and Lots 1, 2, and 3, Block 2)

*Richard A. Arnhold*  
Richard A. Arnhold

OWNERS (Lots 1, 2, 3, and 4, Block 1)

*William F. Aubel*  
William F. Aubel

*J.B. Gilmore*  
J.B. Gilmore

**NOTARY CERTIFICATES:**

State of Kansas, County of Ellis, ss

Be it remembered that on this 17th day of April, 1980, before me, a notary public in and for said County and State, came Richard A. Arnhold, William F. Aubel and J.B. Gilmore, to me personally known to be the same person(s) who executed the foregoing instrument of writing and duly acknowledged the execution of same. In testimony whereof, I have hereunto set my hand and affixed my notarial seal the day and year above written.

My Commission expires

*Donald C. Hanson*  
Notary Public

1 Feb 1983

**SURVEYOR'S CERTIFICATE:**

I, James R. Flemons, a licensed professional engineer in the State of Kansas, do hereby certify this plat to be true and correct to the best of my knowledge; and that all iron bars as shown have been accurately set. Survey completed in April, 1980.

*James R. Flemons*  
James R. Flemons, P.E.

**APPROVALS:**

This plat has been submitted to and approved by the Hays - Ellis County Planning Commission this 21st day of April, 1980.

*Richard A. Wanda*  
Secretary

*Margaret E. Smith*  
Chairman

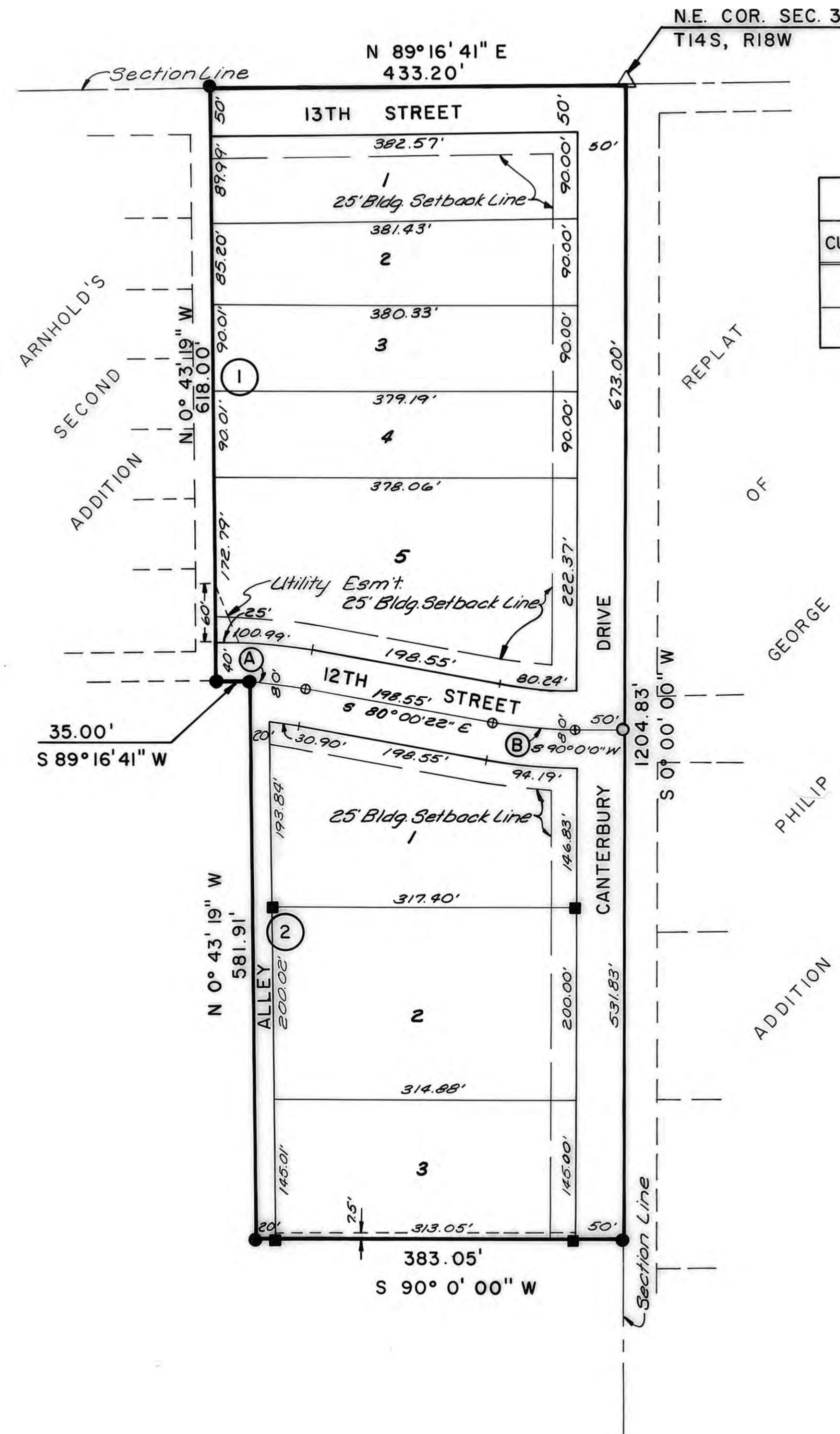
The dedication shown on this plat is accepted by the City Commission of the City of Hays, Kansas, this 24th day of April, 1980.

ATTEST:

CITY OF HAYS, KANSAS

*Arndt Schindler*  
City Clerk

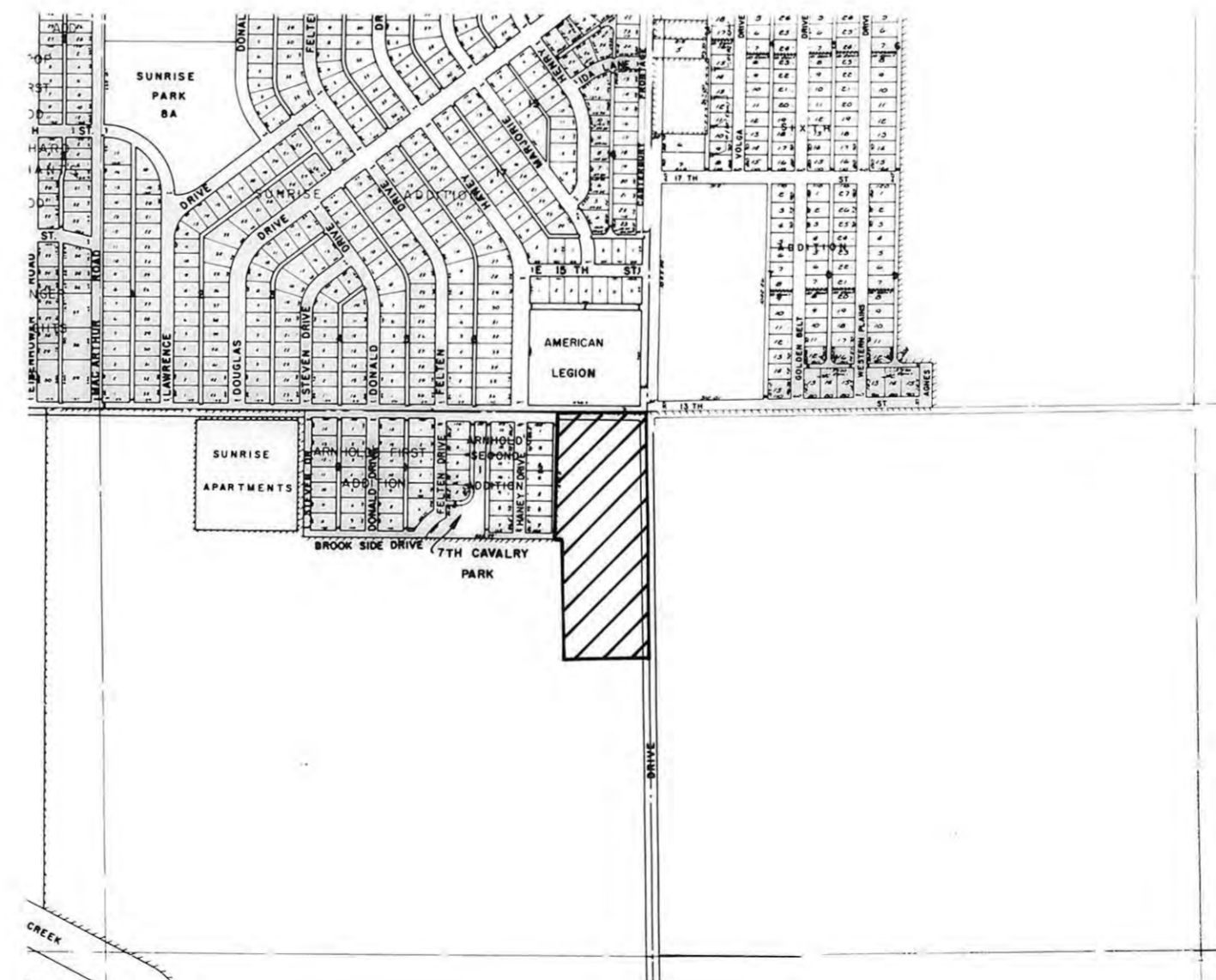
*Mike Billings*  
Mayor



CURVE DATA (AT C OF STREET)				
CURVE	Δ	R	T	L
(A)	10°42'57"	500'	46.89'	93.51'
(B)	9°59'38"	500'	43.72'	87.21'



**LEGEND**  
 ■ 1/2" Rebar Found  
 ● 1/2" Rebar Set  
 Δ Section Corner



**RECORDED:**

State of Kansas, County of Ellis, ss

This is to certify that this instrument was filed for record in the Register of Deeds Office on the 19 day of November, 1980 in Book Plat Submitt. Page # 279.

*Virginia Herzog*  
Register of Deeds

*Ordinance 305 p. 304*  
*Plat Submitt 305 p. 305*  
*Resolution 305 p. 309*

PREPARED BY  
**BUCHER & WILLIS**  
CONSULTING ENGINEERS, PLANNERS & ARCHITECTS  
SALINA, KANSAS KANSAS CITY, MO.