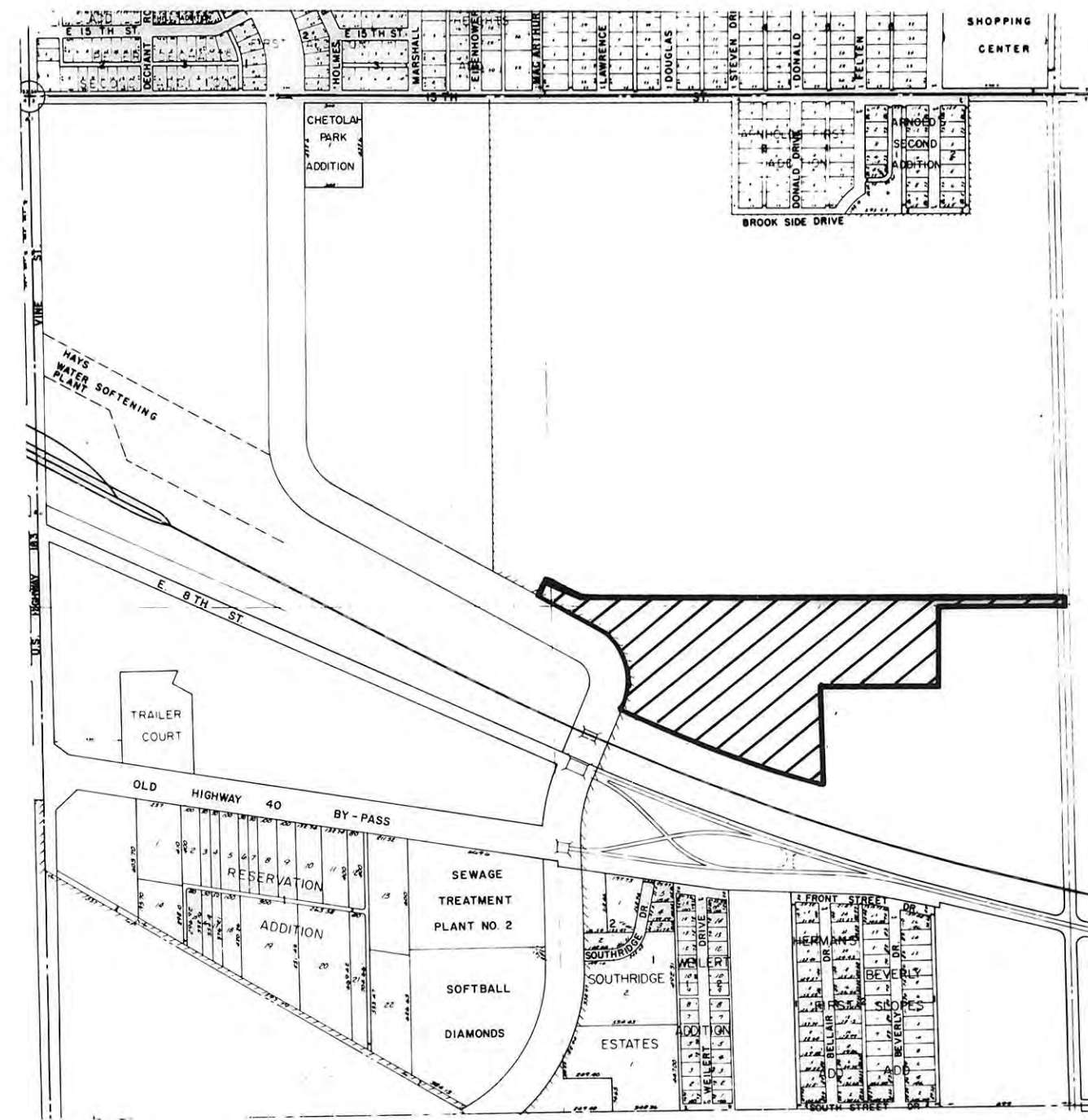
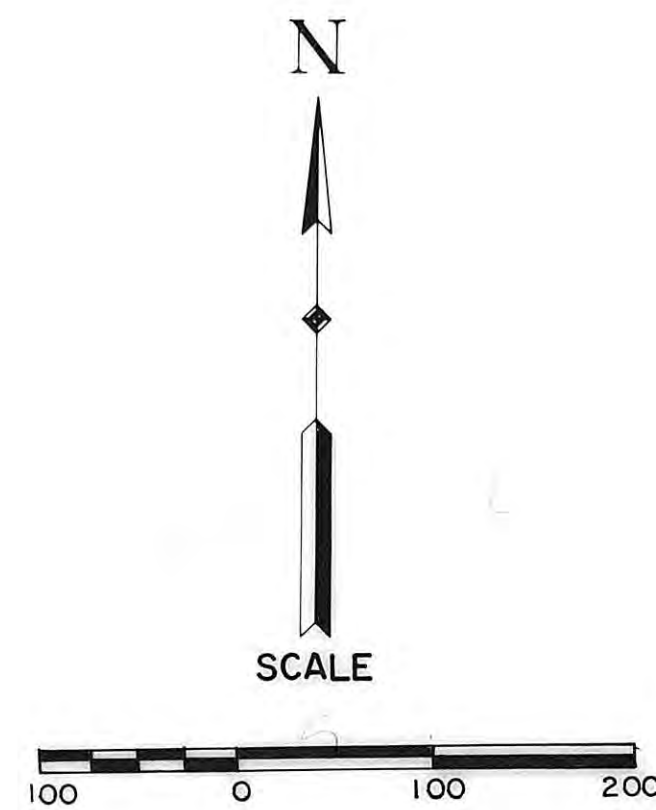


# PLAT OF ARNHOLD'S INDUSTRIAL ADDITION HAYS, KANSAS

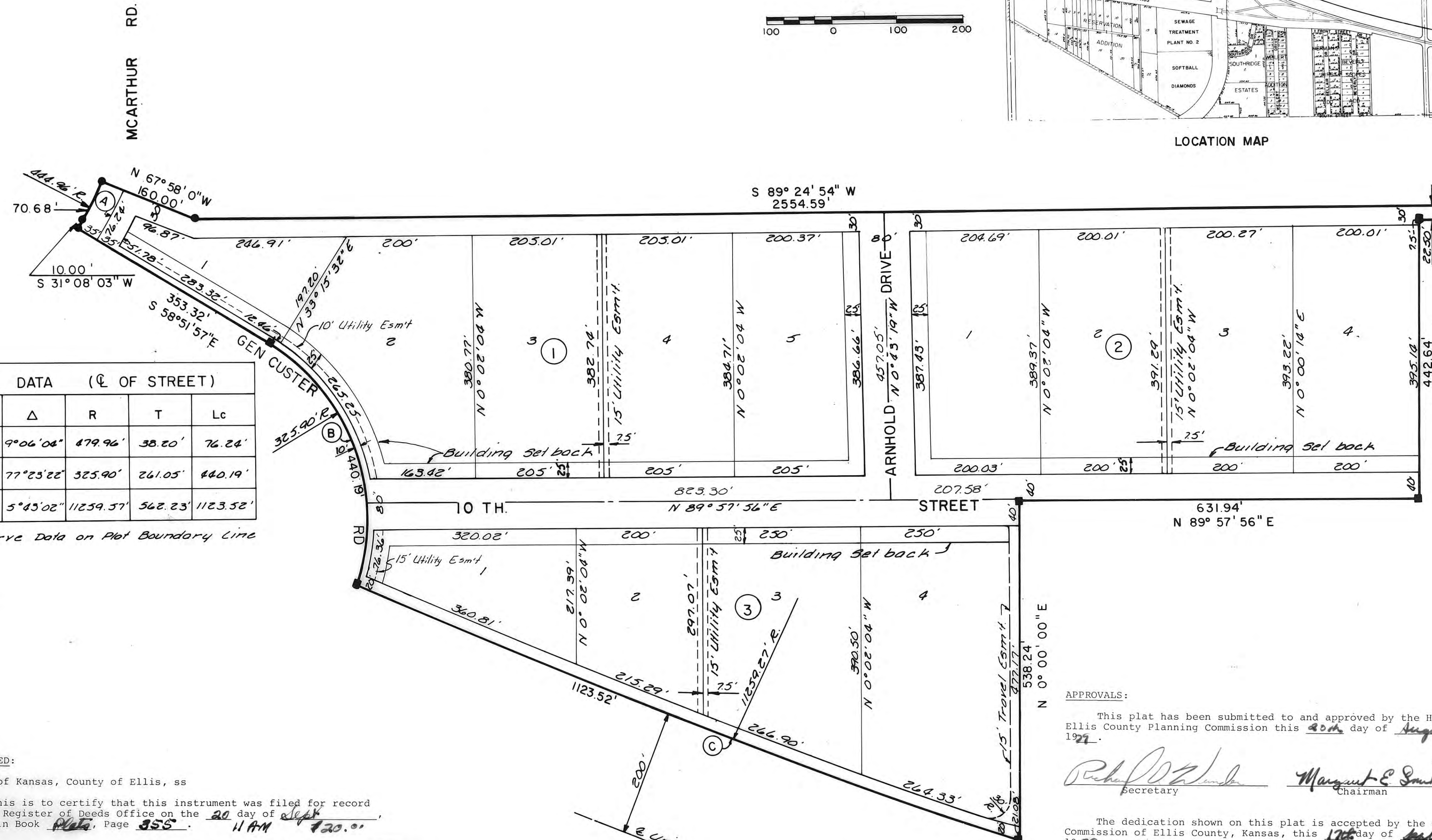


**LEGAL DESCRIPTION**  
A tract of land situated in the East Half (E½) and the East Half of the West Half (E½, W½) of Section 3, Township 14 South, Range 18 West of the Sixth Principal Meridian in Ellis County, Kansas, and more particularly described as follows:

Beginning at the East One Quarter corner of Section 3, Township 14 South, Range 18 West; THENCE on an assumed bearing of N 0° 00' 00" W along the East line of said East Half of said Section 3, a distance of 22.50 feet; THENCE S 89° 24' 54" W, a distance of 2554.59 feet; THENCE N 67° 58' 00" W, a distance of 160.00 feet; THENCE on a curve to the right, having a radius of 444.96' an arc distance of 70.68 feet, the long chord of said curve having a bearing of S 26° 35' 01" W and a length of 70.61 feet; THENCE tangent to said curve S 31° 08' 03" W, a distance of 10.00 feet; THENCE S 58° 51' 57" E, a distance of 353.32 feet; THENCE on a curve to the right, having a radius of 325.90 feet, an arc distance of 440.19 feet; THENCE on a curve to the left, having a radius of 1125.57 feet, an arc distance of 1123.52 feet, the long chord of said curve having a bearing of S 68° 44' 39" E and a length of 1123.05 feet; THENCE N 0° 00' 00" E, a distance of 538.24 feet; THENCE N 89° 57' 56" E, a distance of 631.94 feet; THENCE N 0° 00' 14" E, a distance of 442.64 feet; THENCE N 89° 24' 54" E, a distance of 618.00 feet to the point of beginning. Said tract contains 27.838 acres more or less.

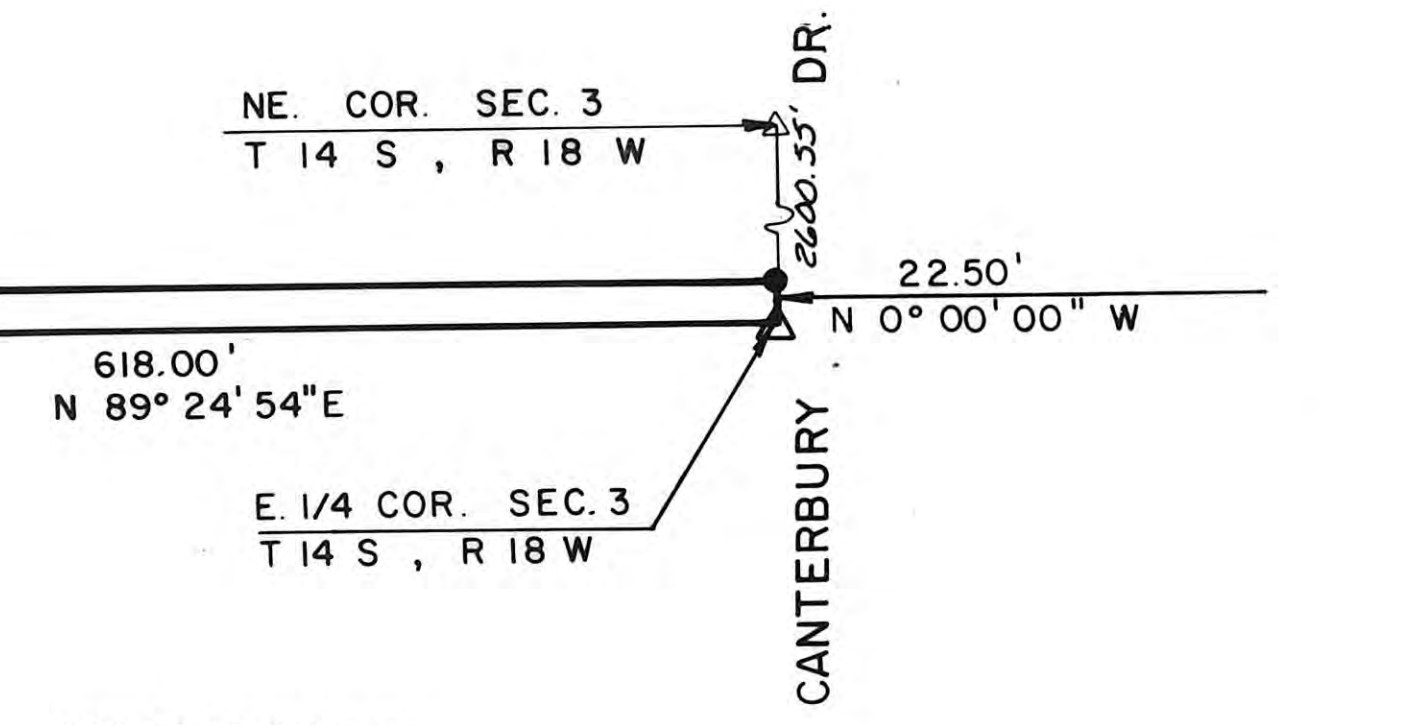
**STREET, EASEMENTS AND PUBLIC PARKS**  
Streets, boulevards, drives, alleys and pedestrian walkways as shown on this plat and not heretofore dedicated to and for public use are hereby dedicated.

Easements are hereby dedicated for public use, as utility easement right-of-way, which are shown as lying between the dashed lines in widths indicated and as set forth on this plat, and said easements may be employed for the purpose of installing, repairing and maintaining gas lines, electric lines, telephone lines, and all other forms and types of public utilities, new or hereafter used, by the public over, under and along the strips marked "Utility Esm't".



CURVE DATA (C OF STREET)				
CURVE	Δ	R	T	Lc
(A)	9°06'06"	179.96'	38.20'	76.24'
(B)	77°23'22"	325.90'	261.05'	440.19'
(C)	5°43'02"	1125.57'	542.23'	1123.52'

\* Curve Data on Plat Boundary Line



**OWNER'S CERTIFICATE**  
Know all men by these presents, that we, the undersigned property owners of the land above described, have caused the same to be surveyed and platted into lots, blocks, streets, alleys, easements, and pedestrian walkways, the same to be known as "Arnhold's Industrial Addition" to the City of Hays, in Ellis County, Kansas. The streets, alleys, and pedestrian walkways are hereby dedicated to and for the use of the public, and easements as indicated on the accompanying plat are hereby granted to the public for the purpose of constructing, operating, maintaining and repairing all public utilities.

RICHARD A. ARNHOLD  
*Richard A. Arnhold*

**NOTARY CERTIFICATES**  
State of Kansas, County of Ellis, ss  
Be it remembered that on this 6<sup>th</sup> day of August, 1979, before me, a notary public in and for said County and State, came Richard A. Arnhold, to me personally known to be the same person (s) who executed the foregoing instrument of writing and duly acknowledged the execution of same. In testimony whereof, I have hereunto set my hand and affixed my notarial seal the day and year above written.  
My Commission expires 1 Feb 83

*Donald L. Larkin*  
Notary Public

**SURVEYOR'S CERTIFICATE:**  
I, James R. Flemons, a licensed professional engineer in the State of Kansas, do hereby certify this plat to be true and correct to the best of my knowledge; and that all iron bars as shown have been accurately set. Survey completed in July, 1979.

*James R. Flemons*  
James R. Flemons, P.E.

**APPROVALS:**  
This plat has been submitted to and approved by the Hays - Ellis County Planning Commission this 20th day of August, 1979.  
*Richard A. Arnhold* Secretary  
*Margaret E. Smith* Chairman

The dedication shown on this plat is accepted by the County Commission of Ellis County, Kansas, this 17th day of September, 1979.

**ATTEST:**  
*Emerj. Rome* County Clerk  
*Edward L. Smith* Chairman

**RECORDED:**  
State of Kansas, County of Ellis, ss  
This is to certify that this instrument was filed for record in the Register of Deeds Office on the 20 day of Sept, 1979 in Book Plata, Page 355. 11 AM

Plat & Deeds - 36 285p 667  
Resolution - 36 285p 671  
*Virginia Henry*  
Register of Deeds  
*Rose Ann Rupp*  
Deputy

- LEGEND**
- 1/8" Rebar Set
  - △ Section Corner
  - 1/2" Rebar Found



PREPARED BY  
**BUCHER & WILLIS**  
CONSULTING ENGINEERS, PLANNERS & ARCHITECTS  
SALINA, KANSAS KANSAS CITY, MO.