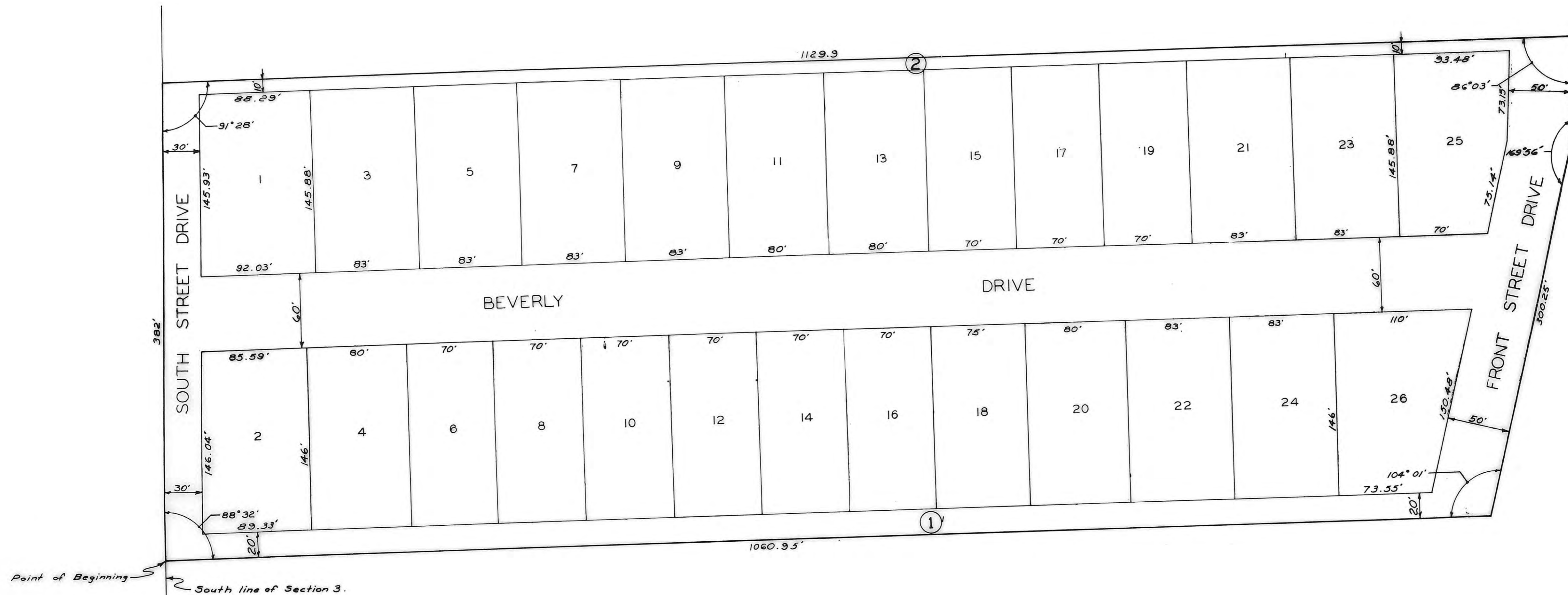
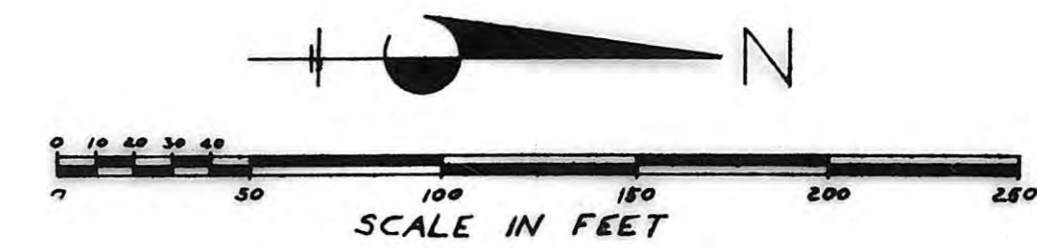


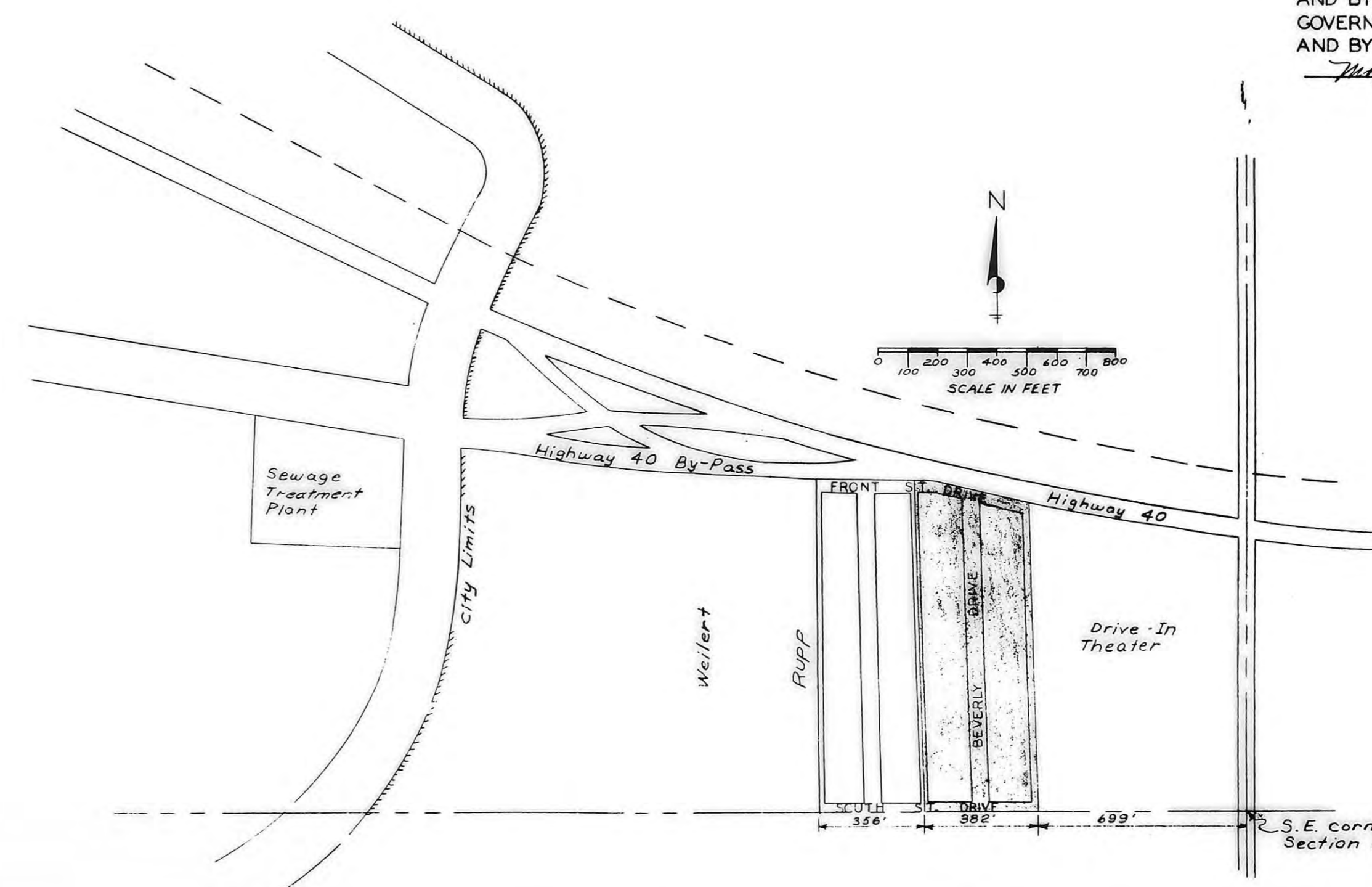
BEVERLY SLOPES ADDITION



LEGAL DESCRIPTION

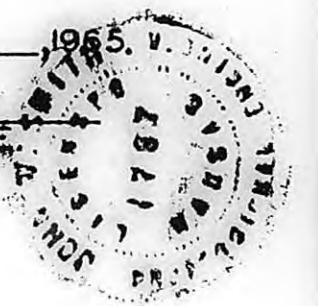
A TRACT OF LAND IN THE SOUTHEAST 1/4 OF SECTION 3, TOWNSHIP 14 SOUTH, RANGE 18 WEST OF THE SIXTH PRINCIPAL MERIDIAN, ELLIS COUNTY, KANSAS AND FURTHER DESCRIBED AS FOLLOWS:

BEGINNING AT A POINT ON THE SOUTH LINE OF SECTION 3 AND 699 FEET WEST OF THE SOUTHEAST CORNER OF SAID SECTION 3; THENCE WEST ALONG THE SOUTH LINE OF SECTION 3, 382 FEET; THENCE NORTH WITH AN INTERNAL ANGLE OF 91 DEGREES 28 MINUTES, 1,129.9 FEET TO A POINT ON THE SOUTH RIGHT-OF-WAY LINE OF U. S. HIGHWAY 40 BY-PASS THENCE EAST ALONG SAID RIGHT-OF-WAY WITH AN INTERNAL ANGLE OF 86 DEGREES 03 MINUTES, 91 FEET; THENCE SOUTHEASTERLY ALONG SAID RIGHT-OF-WAY WITH AN INTERNAL ANGLE OF 169 DEGREES 56 MINUTES, 300.25 FEET; THENCE SOUTH WITH AN INTERNAL ANGLE OF 104 DEGREES 01 MINUTES, 1,060.95 FEET TO THE POINT OF BEGINNING.



ENGINEER'S CERTIFICATE
I, JOHN W. SMITH, A LICENSED PROFESSIONAL ENGINEER, DO HEREBY CERTIFY THIS PLAT TO BE TRUE AND CORRECT TO THE BEST OF MY KNOWLEDGE.

SIGNED THIS 27 DAY OF May 1965.
John W. Smith
JOHN W. SMITH, P.E.



I HEREBY CERTIFY THAT THIS PLAT WAS FIRST SUBMITTED TO THE CITY PLANNING COMMISSION AND BY THE CITY PLANNING COMMISSION TO THE GOVERNING BODY OF THE CITY OF HAYS, KANSAS, AND BY SUCH GOVERNING BODY DULY APPROVED ON May 27 1965.

Dorothy Sooker
DOROTHY SOOKER
CITY CLERK

STATE OF KANSAS
ELLIS COUNTY
This instrument was filed for record

JUN 4 1965
10:30 AM
2 of 2 plates
Fees \$3.00
\$2.60
\$0.60 transfer
Plat & Dedication 221-44
Resolution 221-46
Resolution 221-47

DESIGNED BY	JOHN W. SMITH
DRAWN BY	RM
CHECKED BY	WJS
DATE	April 1965
JOB NO.	65-204
HAYS KANSAS	
BEVERLY SLOPES ADDITION	
SHEET 1 OF 1	

THIS IS A DIRECT PHOTOGRAPHIC REPRODUCTION OF THE OFFICIAL INSTRUMENT (RECORDED PLAT).
THIS REPRODUCTION WAS MADE BY BUCHER & WILLIS CONSULTING ENGINEERS, PLANNERS & ARCHITECTS IN NOVEMBER, 1979.