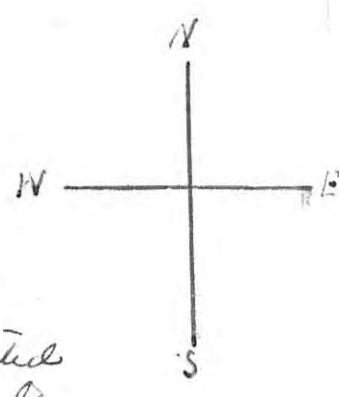
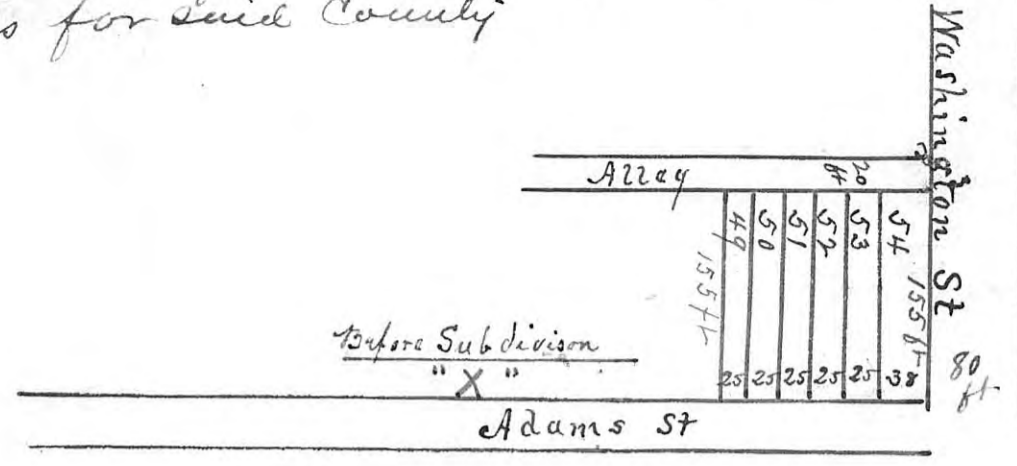


Lots Nos 49, 50, 51, 52, 53 and 54 of Block No 10
 of Ellis County Kansas as originally platted
 by the Kansas Pacific Railway Co according
 to plat thereof on file in office of Register of
 Deeds for said County

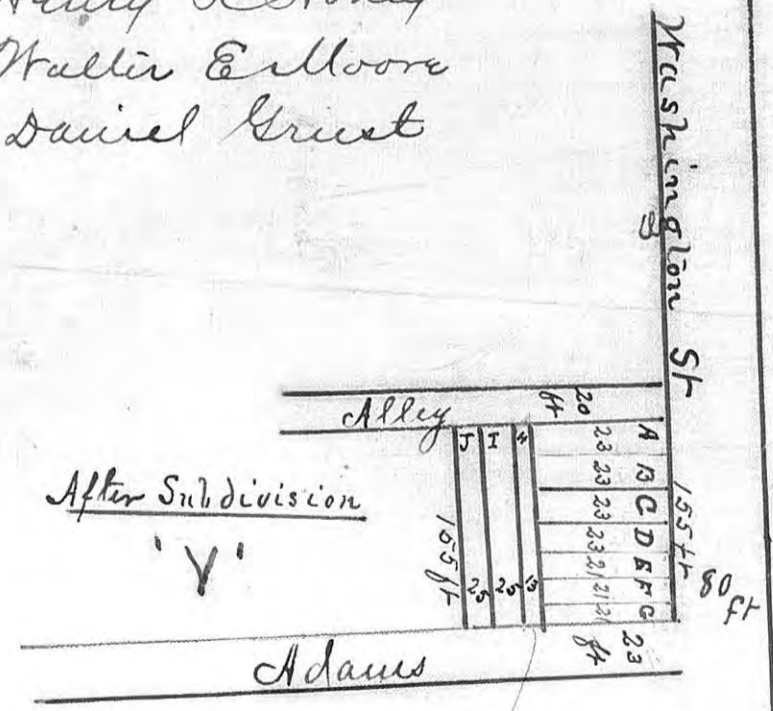


The Big Four subdivision of lots Nos 49 50
 51 52 53 and 54 in Block No 10 as shown above
 whereby lots marked A, B, C, D, E, F, G, H, I, J are created
 A, B, C and D are each 23 ft by 100 ft; lots E, F and G
 are each 21 ft by 100 ft Lot H is 13 ft by 155 ft. Lots
 I and J are 25 ft by 155 ft Frontage of all lots is
 indicated by plat annexed Plat X shows lots before
 subdivision and plat Y shows lots as changed and
 subdivided. Subdivision is thus made to change
 frontage and size of certain lots. Lots 49 & 50
 remain as they were but being redesignated I and J

These plats are made and recorded that lots
 may be transferred by their new designation

Signed in presence
 of Hugh Alexander

Harry R Honey
 Walter E Moore
 Daniel Grist



State of Kansas }
 Ellis County

Deed

Be it Remembered that on this 14 day of October A D 1886.
 before me Hugh Alexander a Notary Public in and for said County
 personally appeared Harry R Honey Walter E Moore and Daniel Grist
 to me personally known to be the same persons who caused
 the annexed plats to be made and who make the "Big Four"
 subdivision as therein indicated and such persons severally
 duly acknowledged the execution of the same for the purposes
 therein indicated

Hugh Alexander
 Notary Public

Recorded for Record on the 16th day
 of October A D 1886 at 9
 o'clock AM Eli Gay
 Register of Deeds
 Ellis County Kansas

Recorded for Record on the 16th day
 of October A D 1886 at 9
 o'clock AM Eli Gay
 Register of Deeds
 Ellis County Kansas