

Description
or
BIRD INVESTMENT COMPANY'S
SECOND ADDITION to the CITY OF HAYS,
Hays, Kansas.

Beginning at the point where the north line of the alley of Block Four (4), Bird Investment Company's First Addition to the City of Hays, intersects the west line of Fort St., thence north easterly along said west line of said Fort St. four hundred fifty four feet (454'), thence north westerly at right angles to said Fort St. nine hundred sixty feet (960'), thence south westerly parallel to said west line of said Fort St. four hundred fifty four feet (454'), thence south easterly nine hundred sixty feet (960') to the place of beginning.

Said tract to be divided into blocks and lots and to contain streets, alleys, and drives as shown on the accompanying plat.

I hereby certify that I have surveyed the above described property and have drawn the accompanying plat of the same, and that it is a true and correct plat of the addition.

Bk 12 Main Page 55

M. Wilson
H.A. Wilson
Assistant City Engineer

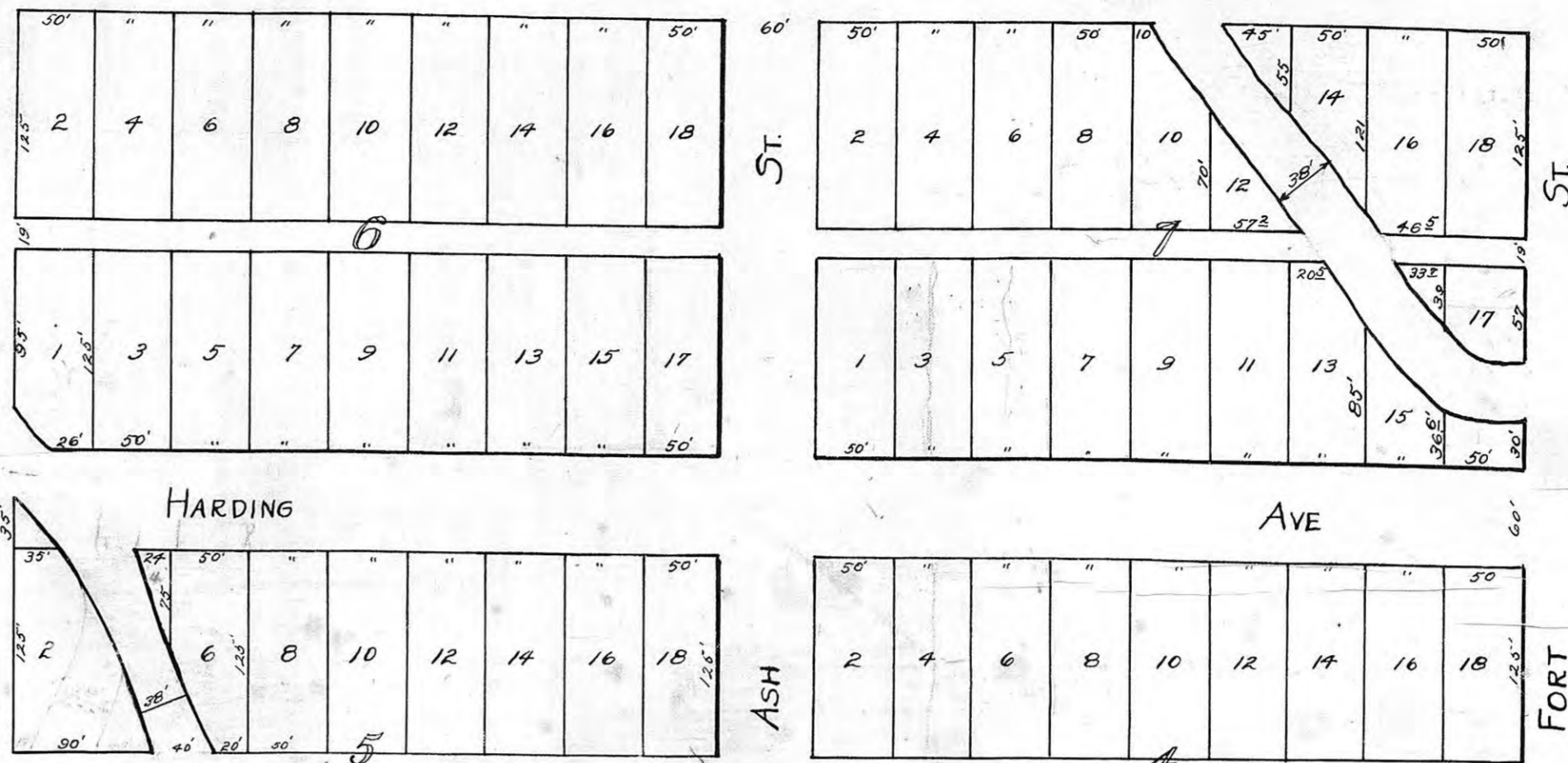
STATE OF KANSAS)
COUNTY OF ELLIS) SS.

I, Emily C. Johnson, Clerk of the City of Hays, Kansas, hereby certify that the above and foregoing plat of THE BIRD INVESTMENT COMPANY'S ADDITION to the City of Hays, Kansas, was submitted to the Board of Commissioners of the said city on the 29th day of May, A.D., 1923, and the same was approved by said Board of Commissioners on said date.

Emily C. Johnson
Clerk of City of Hays.

STATE OF KANSAS, ELLIS CO.,
This instrument was filed for record on the 29th day of May, A.D., 1923.
4-12-23
J. Rome
Register of Deeds

PLAT
OF
BIRD INVESTMENT COMPANY'S
SECOND ADDITION
TO THE CITY OF HAYS, KANSAS
Scale - 1 inch = 100 feet.
M. Wilson April 1923

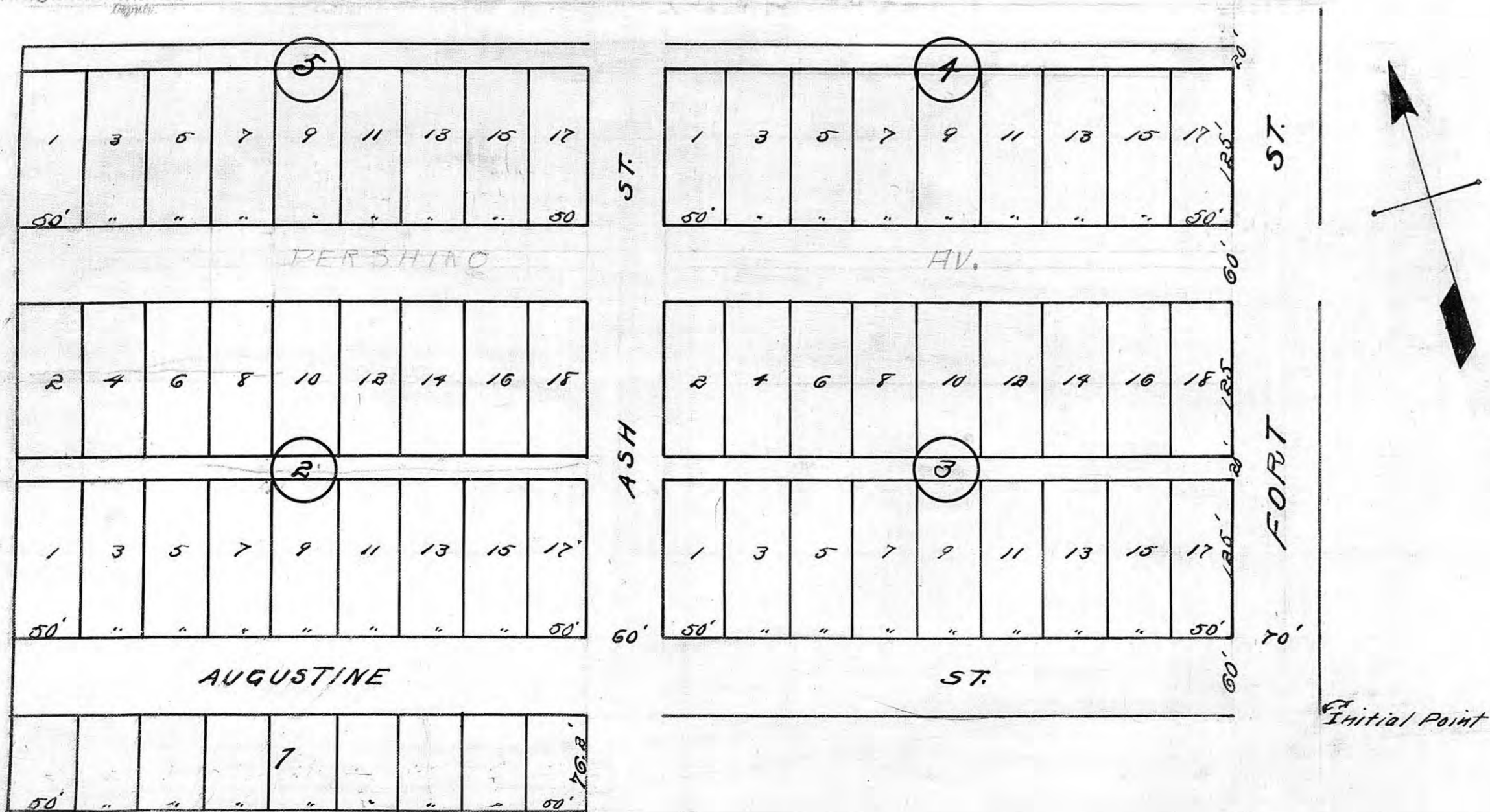


Beginning at the North West Corner of Lot 2, Blk. 48, Sebald Allen Co's Add, Thence north West, along south line of Augustine Ave extended, 70', to South East Corner of Add, thence North East 535' along West Line of Ft. Street, to North East Corner of Addition, laying off east line Blks. 3 & 4, thence North West, along north line of Addition, 960' to the North West Corner of Addition, laying off north line of Blks. 4 & 5, thence South West 614.2' along west line of Addition, parallel with West line of Ft. Street to South West Corner of Addition, laying off west line of Blks. 4, 3, & 2, thence South East 480', parallel with south line of Augustine St. extended, thence North East, 762', along West line of Ash St. extended, laying off east line of Blk. 1, thence South East 510' along south line of Augustine St. extended to South East Corner of Addition, laying off south line of Blk. 3.
All streets in Addition are 60' in width, alleys 20' lots in Blocks 2, 3, 4 & 5 are 50' x 125', lots in Block 1 are 50' x 76.2'.
C. J. Gudebach Co. Eng.

THE BIRD INVESTMENT CO'S ADD

State of Kansas, Ellis County, ss.
This instrument was filed for record on the 14th day of July, A. D. 1923, at 11:30 A.M., and duly recorded in book 116, page 116.
J. Rome
Register of Deeds

HAYS KANSAS
Scale 100' = 1 inch



I hereby certify that the within plat is a true and correct and complete plat and Diagram of survey as actually made and witnessed by my hand this 13th day of July, 1923.
C. J. Gudebach
C. J. Gudebach Co. Eng.

KNOW ALL MEN BY THESE PRESENTS, That the Bird Investment Company, a corporation duly organized, incorporated, and existing under and by virtue of the law of the State of Kansas, and having its office and principal place of business at Hays, Kansas, has caused to be surveyed and platted, for record in accordance with the laws of the State of Kansas, a certain portion of Section thirty-three (33) Township Thirteen (13) South, Range Eighteen (18) West of the 6th P. M., in Ellis County, Kansas, to be named and known as The Bird Investment Company's Addition to Hays, Kansas.

That the attached plat is a true plat of said addition, showing all streets and alleys by their courses, boundaries and extent, the length and width of blocks and lots being indicated by figures on said plat; and the length and width of all streets and alleys being shown in like manner.

All streets and alleys as shown on the plat are dedicated for public use.

IN WITNESS WHEREOF, The Bird Investment Company has caused this deed to be signed on its behalf by its president, thereto duly authorized to do so, and to be attested by its secretary, this 13th day of July, A. D., 1923.

THE BIRD INVESTMENT COMPANY,
By *J. S. Bird* Pres.
Attest *A. F. Bieker* Secy.

STATE OF KANSAS)
COUNTY OF ELLIS) SS.

BE IT REMEMBERED, That on this 13th day of July, A. D., 1921, before me, the undersigned, a Notary Public in and for the county and state aforesaid, came J. S. Bird, President of The Bird Investment Company, a corporation, who is personally known to me to be the same person who executed the within instrument of writing as president of said corporation, and such person duly acknowledged the same to be the act of said corporation.

IN TESTIMONY WHEREOF, I have hereunto subscribed my name and affixed my official seal, on the day and year last above written.

My Commission expires Mar. 9, 1925
Susan Mullen
Notary Public.

IN WITNESS WHEREOF, the said The Bird Investment Company, a corporation, has caused this deed to be signed by its president and attested by its secretary and the corporate seal of said corporation to be hereto affixed, and the said deed to be executed, acknowledged and delivered in its name and behalf by its president, this 13th day of July, A. D., 1921.

THE BIRD INVESTMENT COMPANY,
By *J. S. Bird* Pres.
Attest *A. F. Bieker* Secy.

CERTIFICATE OF PLAT

KNOW ALL MEN BY THESE PRESENTS:

That the Bird Investment Company, a corporation duly organized, incorporated and existing under and by virtue of the laws of the State of Kansas and having its office and principal place of business at Hays, Kansas, has caused to be surveyed and platted for record in accordance with the laws of the State of Kansas a certain portion of Sec. 33 Twp. 13 Range 18 West of the 6th P.M. in Ellis County, Kansas, to be named and known as "THE BIRD INVESTMENT COMPANY'S SECOND ADDITION" to Hays, Kansas.

That the attached plat is a true plat of said addition showing all streets and alleys by their courses, boundaries and extent. The lengths and widths of Blocks and Lots being indicated by figures on said plat and the lengths and widths of all streets and alleys being shown in like manner. All streets and alleys as shown on the plat are dedicated for public use.

IN WITNESS WHEREOF the Bird Investment Company has caused this deed to be signed by its president who is duly authorized to do so, and attested by its Secretary, this 28 day of May, A.D., 1923.

THE BIRD INVESTMENT COMPANY,
By *J. S. Bird* Pres.
Attest *A. F. Bieker* Secy.

STATE OF KANSAS, ELLIS COUNTY, SS.

BE IT REMEMBERED, That on this 28 day of May, 1923, before me, the undersigned, a Notary Public in and for the State and County aforesaid, came J. S. Bird, President of the Bird Investment Company, and A. F. Bieker, Secretary of the said Company, who are personally known to me to be such officers, and who are personally known to me to be the same persons who executed, as such officers, the within instrument of writing on behalf of The Bird Investment Company, and such persons duly acknowledged the execution of the same to be the act and deed of said Company.

IN TESTIMONY WHEREOF, I have hereunto set my hand and affixed my notarial seal the date here last above written.

Agnes M. Brown
Notary Public.

My Commission expires
Mar. 9, 1925

IN WITNESS WHEREOF, the said The Bird Investment Company a corporation has caused this deed to be signed by its President and attested by its Secretary and the corporate seal of said corporation to be hereto affixed and the said deed to be executed, acknowledged and delivered in its name and behalf by its president this 28 day of May A. D., 1921.

THE BIRD INVESTMENT COMPANY,
By *J. S. Bird* Pres.
Attest *A. F. Bieker* Secy.

State of Kansas,
Ellis County, ss.
I, Emily C. Johnson, Clerk of the City of Hays, Kansas, hereby certify that the above and foregoing plat of the Bird Investment Company's Addition to the City of Hays, Kansas, was submitted to the Board of Commissioners of the said city on the 5th day of July, 1921, and the same was approved by the said Board of Commissioners on said date.

Emily C. Johnson
Clerk of City of Hays