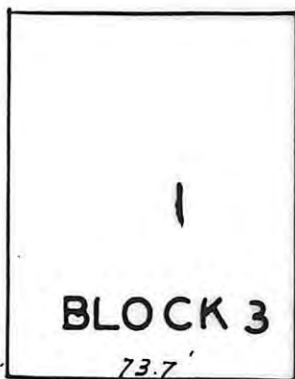
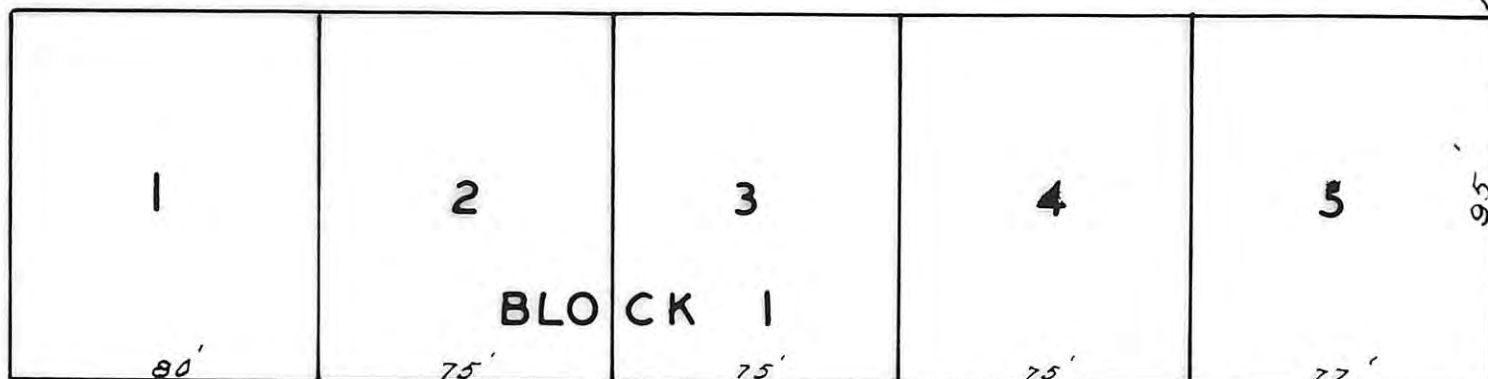




BLOCK 2 BRAUNS FIRST ADDITION

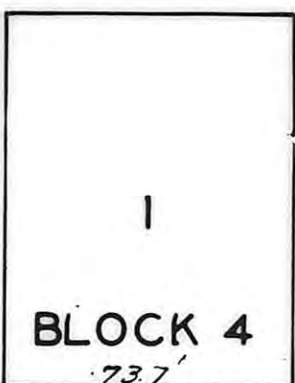


ST.

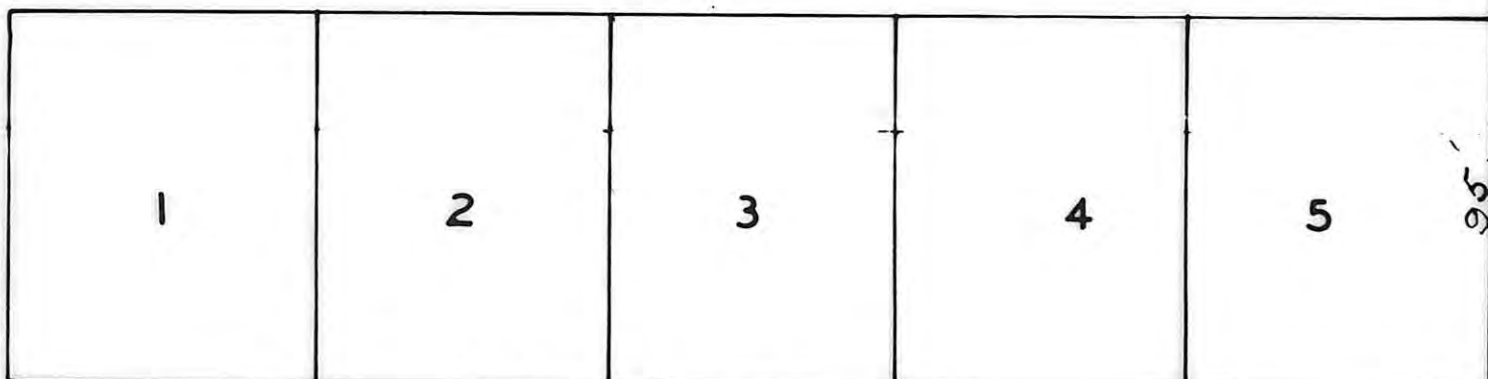


JEFFERSON

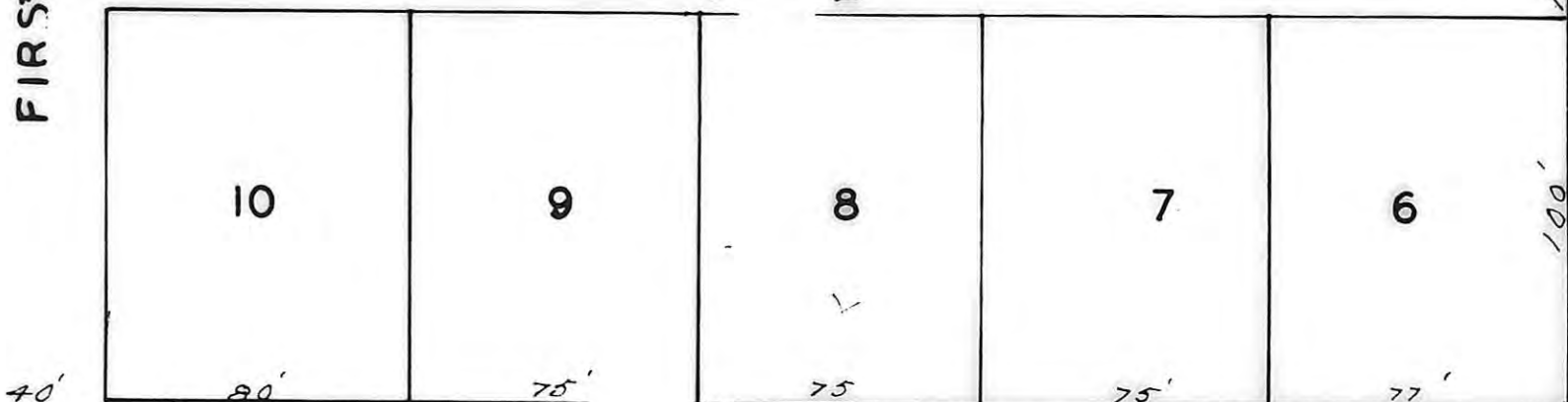
ST.



FIRST



BLOCK 2



KENTUCKY

ST.

REPLAT OF BRAUN'S SECOND ADD.
TO
VICTORIA KANSAS

STATE OF KANSAS
ELLIS COUNTY
This instrument was filed for record

NOV 7 1955

9:30 o'clock A.M. recorded in
2 of Plat page 19
Fees 3.00 Register of Deeds

For Reference See Plat 146 Page 597

THIS IS A DIRECT PHOTOGRAPHIC REPRODUCTION OF THE OFFICIAL INSTRUMENT (RECORDED PLAT).
THIS REPRODUCTION WAS MADE BY BUCHER & WILLIS, CONSULTING ENGINEERS, PLANNERS &
ARCHITECTS IN JUNE 1979