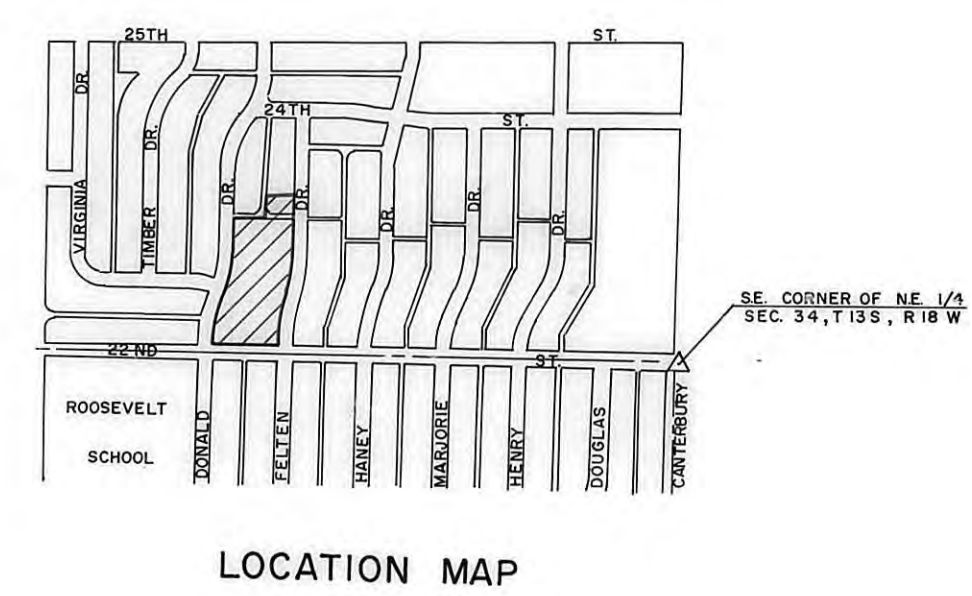
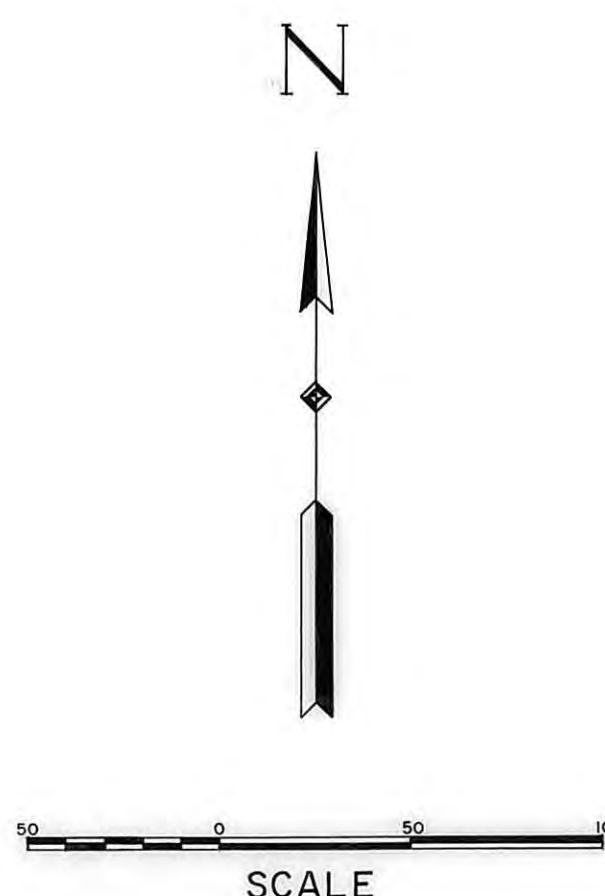
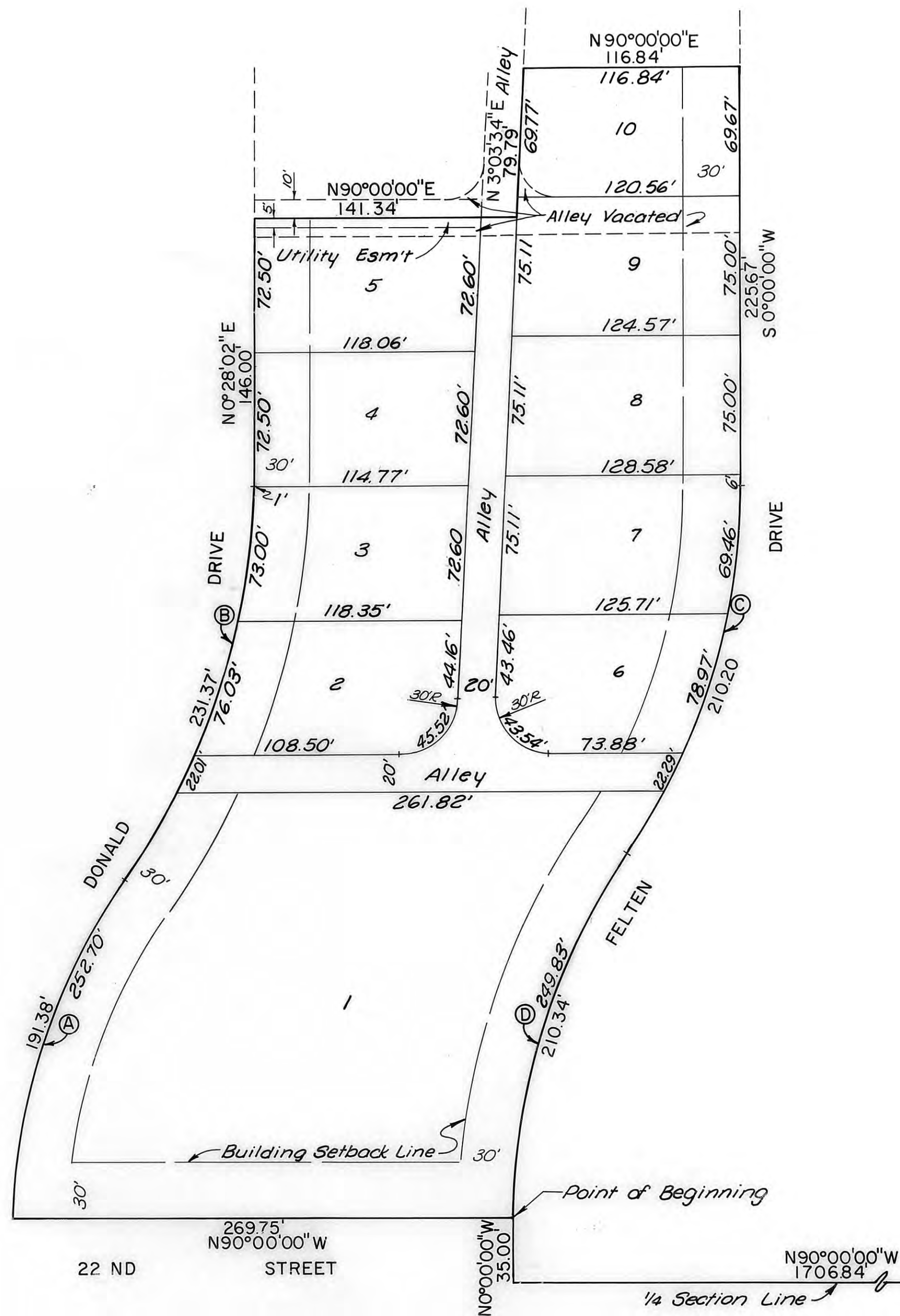


**PLAT OF
BRUNGARDT SUBDIVISION**
BEING A REPLAT OF LOTS 1 & 10, BLOCK 2, GOLDEN BELT SECOND ADDITION
HAYS, KANSAS



CURVE DATA			
CURVE	Δ	R	Lc
(A)	35°41'02.1"	316.42'	191.38'
(B)	35°13'00.1"	376.42'	231.37'
(C)	34°29'12"	349.23'	210.20'
(D)	34°29'12"	355.89'	210.34'

LEGAL DESCRIPTION:

A tract of land in the Northeast Quarter (NE 1/4) of Section Thirty-four (34), Township Thirteen (13) South, Range Eighteen (18) West, of the Sixth Principal Meridian, Ellis County, Kansas, and more particularly described as follows: Commencing at the Southeast Corner of the Northeast Quarter (NE 1/4) of Section Thirty-four (34); THENCE West along the South line of said NE 1/4 on an assumed bearing of N 90°00'00"W, a distance of 1706.84'; THENCE on a bearing of N 0°00'00"W a distance of 35.00' to the Point of Beginning; THENCE on a bearing of N 90°00'00"W a distance of 269.75'; THENCE in a Northeasterly direction on a curve to the right, the initial tangent of which has a bearing of N 1°01'49"E, having a radius of 316.42' an arc distance of 191.38'; THENCE in a Northerly direction on a curve to the left having a radius of 376.42' an arc distance of 231.37'; THENCE on a bearing of N 0°28'02"E a distance of 146.00'; THENCE on a bearing of N 90°00'00"E a distance of 141.34'; THENCE on a bearing of N 3°03'34"E a distance of 79.78'; THENCE on a bearing of N 90°00'00"E a distance of 116.84'; THENCE on a bearing of S 0°00'00"E a distance of 223.67'; THENCE in a Southwesterly direction on a curve to the right having a radius of 349.23', an arc distance of 210.20'; THENCE in a Southerly direction on a curve to the left having a radius of 355.89' an arc distance of 210.34' to the point of beginning. Said tract contains 3.501 acres, more or less.

ALLEYS, EASEMENTS:

Alleys as shown on this plat and not heretofore dedicated to and for public use are hereby so dedicated.

Easements are hereby dedicated for public use, as utility easement right-of-way which are shown as lying between the dashed lines in widths indicated and as set forth on this plat, and said easements may be employed for the purpose of installing, repairing and maintaining gas lines, electric lines, telephone lines and all other forms and types of public utilities, new or hereafter used, by the public over, under and along the strips marked "Utility Esm't".

OWNER'S CERTIFICATE:

Know all men by these presents, that we, the undersigned property owners of the land above described, have caused the same to be surveyed and platted into lots, blocks, alleys and easements the same to be known as Brungardt Subdivision of the City of Hays, Kansas, in Ellis County, Kansas. The alleys are hereby dedicated to and for the use of the public, and easements as indicated on the accompanying plat are hereby granted to the public for the purpose of constructing, operating, maintaining and repairing all public utilities.

ASSEMBLY OF GOD CHURCH, HAYS, KANSAS

Lewis Post
Lewis Post, Board Trustee

John Brungardt
John Brungardt, Board Trustee

Kenneth F. Brungardt
Kenneth F. Brungardt

Rev. Mike Hill
Rev. Mike Hill

L. F. Dinges
L. F. Dinges, Board Trustee

Daniel F. Trickey
Daniel F. Trickey, Board Trustee

Grace Cairns
Grace Cairns, Board Trustee

NOTARY CERTIFICATE:

State of Kansas, County of Ellis, ss

Be it remembered that on this 3rd day of November, 1980, before me, a notary public in and for said County and State, came Rev. Mike Hill, Lewis Post, L.F. Dinges, Daniel Trickey, John Brungardt and Grace Cairns of the Assembly of God Church, Hays, Kansas, and Kenneth F. Brungardt to me personally known to be the same persons who executed the foregoing instrument of writing and duly acknowledged the execution of same. In testimony whereof, I have hereunto set my hand and affixed my notarial seal the day and year above written.

My Commission Expires 1 Feb 83

Donald L. Larson
Notary Public

SURVEYOR'S CERTIFICATE:

I, James R. Flemmons, a licensed professional engineer in the State of Kansas, do hereby certify this plat to be true and correct to the best of my knowledge; and that all iron bars as shown have been accurately set. Survey completed in October, 1980.

APPROVALS:

This replat of Lots 1 & 10, Block 2 of the Golden Belt Second Addition has been submitted to and approved by the City of Hays Planning Commission this 17th day of December, 1980.

Alan Stickle Secretary
Robert Nicholson Chairman

The dedication shown on this replat is accepted by the City Commission of the City of Hays, Kansas, this 22 day of February, 1981.

Attest: Dorothy Soderstrom Secretary
Mike Bellinger Mayor

City of Hays, Kansas

Plat & Specs. - Pl. 307 p. 1 & 2
Resolution Pl. 307 p. 7 & 9

STATE OF KANSAS
ELLIS COUNTY
This instrument was filed for record
FEB 18 1981

James R. Flemmons
Professional Engineer
No. 6336

