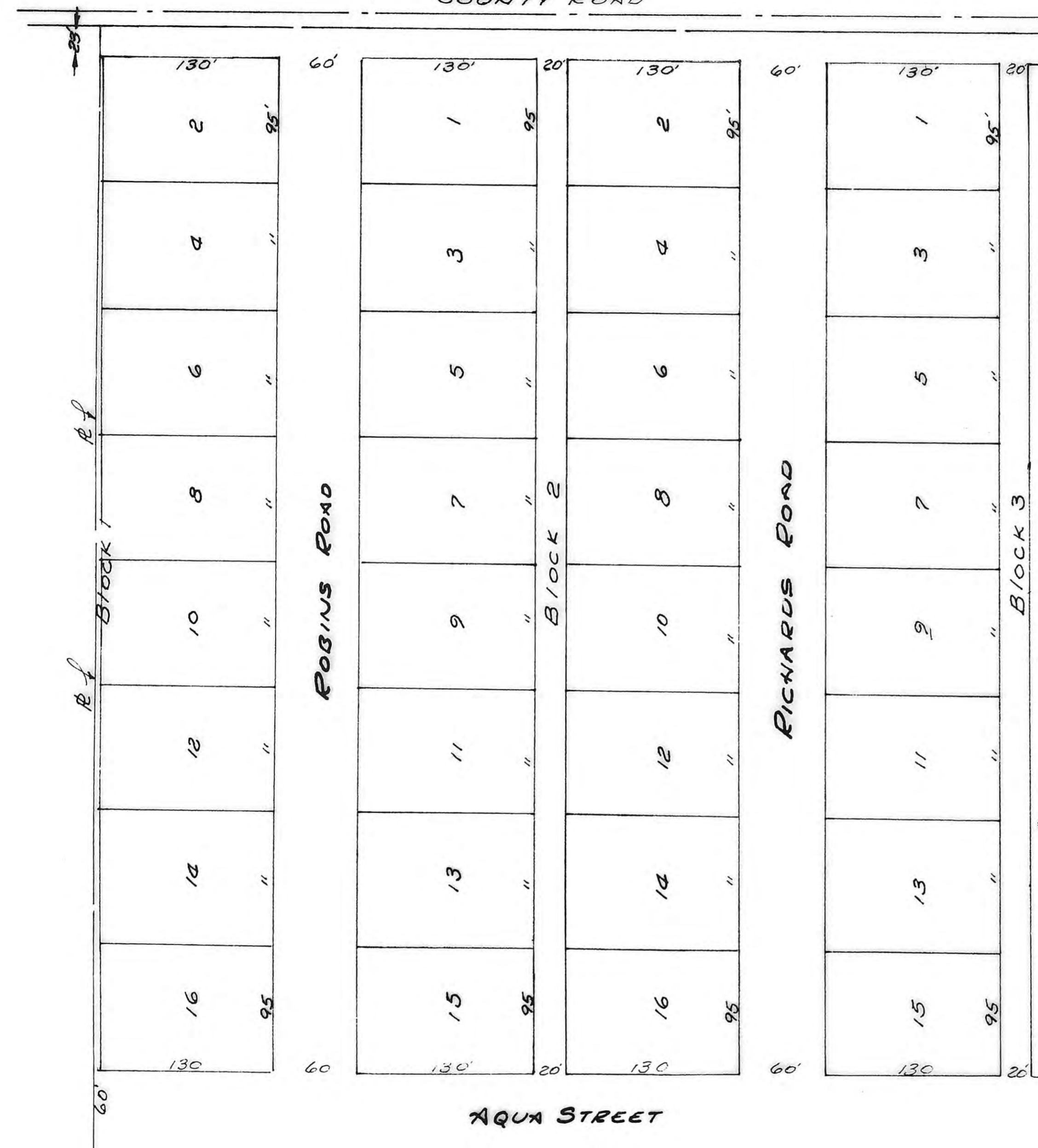


ENTER - EXIT
ROUTE US 40

NORTH R/W LINE

COUNTY ROAD



I, HEREBY CERTIFY THAT THIS PLAT WAS FIRST SUBMITTED TO THE CITY PLANNING COMMISSION AND BY THE CITY PLANNING COMMISSION TO THE GOVERNING BODY OF THE CITY OF HAYS, KANSAS AND BY SUCH GOVERNING BODY DULY APPROVED ON May 15 1966.

Dorothy Soderblom
DOROTHY SODERBLOM
CITY CLERK

LEGAL

From the NE Cor. of NW 1/4, then 208 ft west along the North Line to the point of beginning. Thence west 823.6 feet thence south 843 ft. thence east 823.6 ft. thence North back to the point of beginning. All of said to be in sec 11, T19S, R18W of 6th principal meridian, Ellis County Ks.



I, under the standard practices of the code of Kansas Professional Engineers do certify the above to be true and correct to the best of my knowledge

J.M. Scott
3711

Plat
STATE OF KANSAS
ELLIS COUNTY
This instrument was filed for record
JUN 1 1966
10:00 o'clock P.M. recorded in
2 of Plat. page 105
Fees 3.00
Stamp 3.20
\$6.20
Register of Deeds

Dedication
Book 227 Page 521
Resolution
Book 227 Page 524

PLAT OF
BUFFALO HILLS
for
R.C. RICHARDS HAYS KANS.
SCALE 3/4" = 50'
DRAWN BY I.W. SCOTT

THIS PLAT APPROVED THIS 15th DAY OF NOVEMBER, 1965, BY THE CITY OF HAYS PLANNING COMMISSION.

J.M. Scott
CHAIRMAN

THIS IS A DIRECT PHOTOGRAPHIC REPRODUCTION OF THE OFFICIAL INSTRUMENT (RECORDED PLAT).
THIS REPRODUCTION WAS MADE BY BUCHER & WILLIS, CONSULTING ENGINEERS, PLANNERS & ARCHITECTS IN NOVEMBER, 1979.