

The Town Site of Buffalo is located and laid out upon the SW 1/4 Sec 4, SE 1/4 Sec 4, NE 1/4 Sec 4, SW 1/4 Sec 5, NW 1/4 Sec 5, Sec 7 from 118 of Range 27 N of the 6th Principal Meridian of the State of Kansas and further more it includes in addition to the foregoing a strip of land 84 ft wide on the boundary line 42 ft on each side between all 40 acre subdivisions in said above described sec 7 also a strip of land 60 feet wide and adjoining the section line of sec 7 on the inside thereof and extending the whole distance across the whole of said section the above strips of land being set apart and devoted to the purpose of a continuation of the streets lying on the 40 acre subdivisions in said section excepting on main and fourth st. which shall remain as is. The several plots of ground park and numbered from 1 to 24 inclusive except Nos 10 & 11 in between the right of way of the Kansas Pacific Railway (which right of way extends laterally each way from the center of the main track of said RR 1200 ft) and Blocks Nos 25-26-27-28-29-30 on the N side of said track and between said right of way and blocks Nos 31-32-33-34-35-36 on the south side of said track each park being in length the same as the adjoining lot thereof and said parks are hereby set apart for the use and benefit of the general public to be improved regulated and protected in such manner as the proper legal authorities may prescribe. Blocks Nos 1-2-3-4-5-6-7-8-9-10-11-12-13-14-15-16-17-18-19-20-21-22-23-24 are 350 feet square each. Blocks Nos 25-26-27-28-29-30 are each 75 ft by 350 ft. Blocks Nos 31-32-33-34-35-36 are each 175 ft by 350 feet. Block No 9 is set apart for the purpose of erecting public school building thereon. Block No 10 is set apart for the purpose of erecting a Court House for the use and benefit of the County in which Buffalo may be the County seat. First & sixth streets are each 84 ft wide and extend E & W to section line of sec 7. Second Third & Fifth sts are each 64 ft wide and extend from Maple st on the East to Ash on the West. Oak & Maple are 84 ft wide and extend from N line to the south line of sec 7. Main st is 120 ft wide and extends from the N line to the south line of sec 7. Cedar Elm Walnut & Cottonwood st are each 84 ft wide and extend from first on the N to sixth st on the S. All alleys are 20 ft wide. Lots in Blocks Nos 1-2-3-4-5-6-7-8-11-12 are each 165 feet long and 50 ft wide. Lots in the NW 1/4 of Block 13 NW 1/4 of 14 lots 15-16-17-18 in B-15. Lots 12-13-14 in B-16. NW 1/4 B-17 & NW 1/4 B-18. SW 1/4 B-19. SW 1/4 B-20. Lots 8-9-10-11 in B-21. Lots 22-23-24-25 in B-22. SW 1/4 B-23. SW 1/4 B-24 are each 165 feet long 41 1/4 ft wide. Lots Nos 19-20-21-22-23-24-25 in B-15 & lots 5-6-7-8-9-10-11 in B-16 & lots 12-13-14-15-16-17-18-19-20-21 in B-22 are each 165 ft long and 23 1/2 ft wide. Lots in NW 1/4 B-23. E 1/2 B-24. NW 1/4 B-25. E 1/2 B-26. NW 1/4 B-27-18. NW 1/4 B-19 & 20. E 1/2 B-21. NW 1/4 B-22. NW 1/4 B-23-24 & lots in B-25 Nos 25-26-27-28-29-30-31-32-33-34-35-36 are each 165 ft long and 25 ft wide.

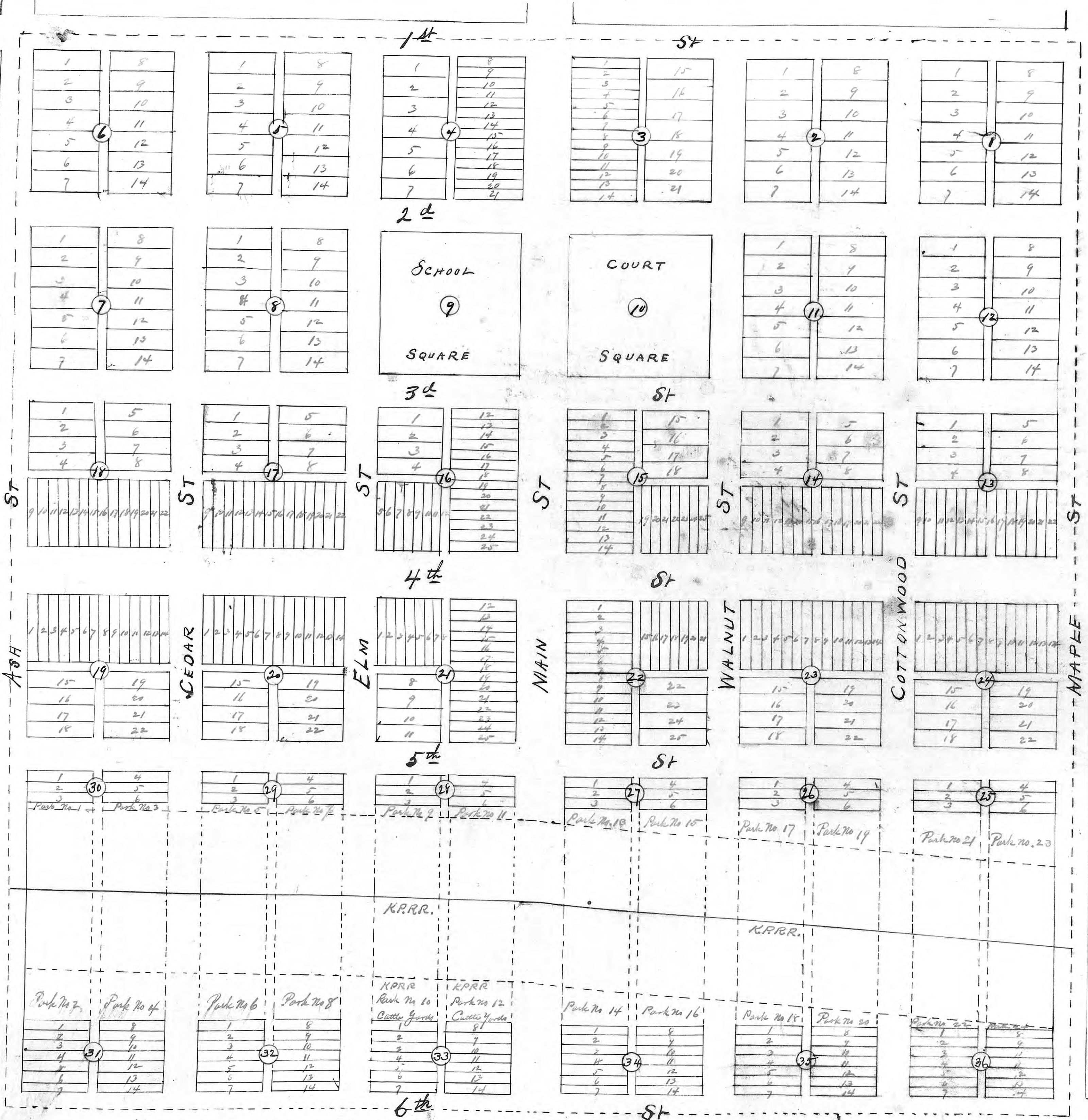
In witness whereof the said Buffalo Town Co have caused this plat to be signed by its president and the clerk of the Corporation attached this 24 day of May A.D. One thousand eight hundred and ninety eight

Jed H. Ellithorpe
President Buffalo Town Co
Witness G. C. Burnett

Corporate Seal
Buffalo Town Co

State of Kansas }
Russell County }
Be it remembered that on this 24th day of May A.D. 1898 before me the undersigned a Notary Public in and for the County and State aforesaid came Jed H. Ellithorpe President of the Buffalo Town Co who is personally known to me to be the same person who as President and by the authority and direction of said Town Company executed the above plat and the description thereof attached and acknowledged the execution of the same
W. A. Lewis.
Notary Public.

Notarial Seal



Buffalo

W. J. Shaw Surveyor of Russell County Kansas certify the above Plat and field notes to be correct as surveyed by me
W. J. Shaw
Co Surveyor

State of Kansas }
Edwin Co. }
I certify that the foregoing plat is a true and correct copy of the original now on file in my office
Witness my hand and official seal this 7th day of December A.D. 1898
J. W. Lyman
Register of Deeds