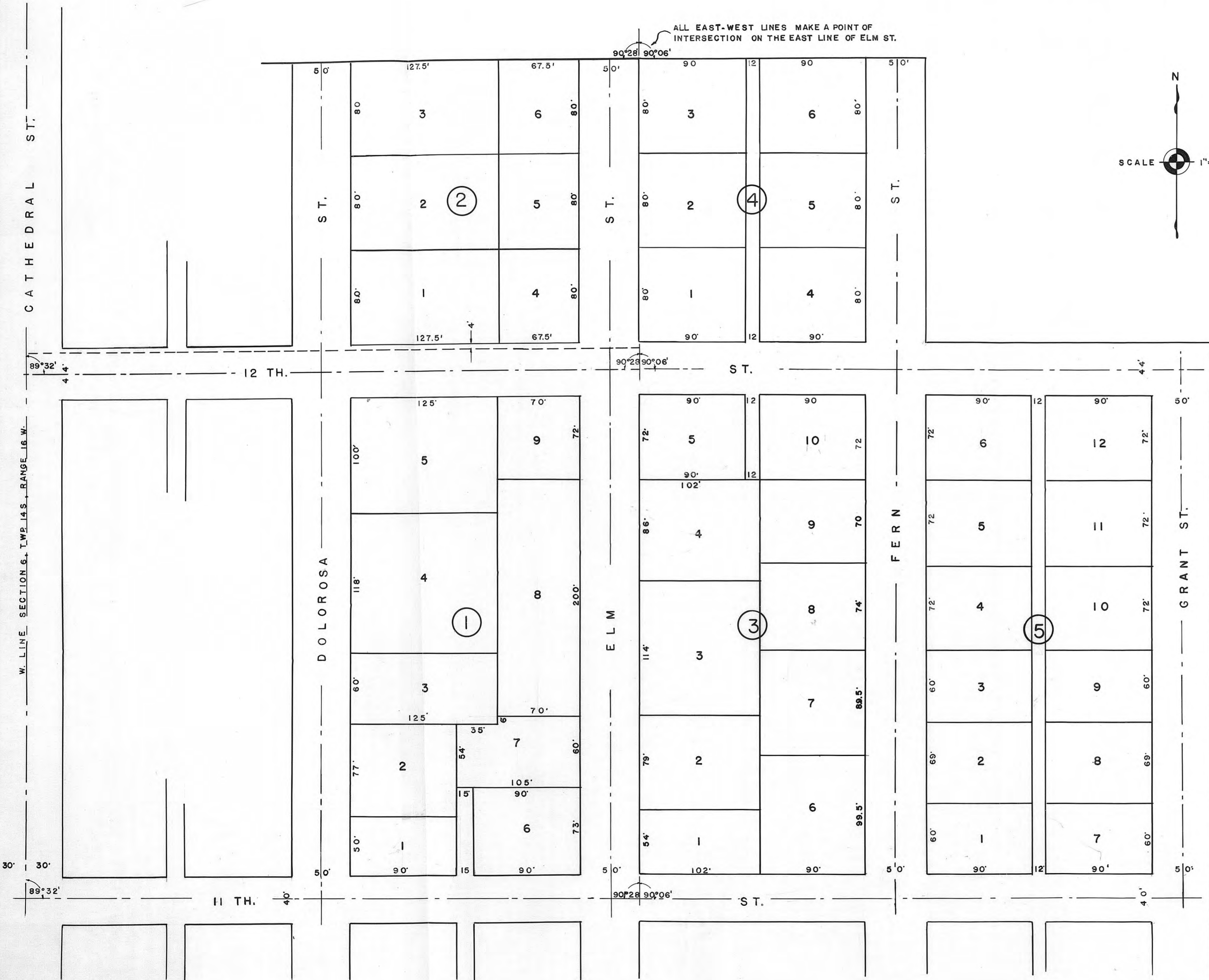
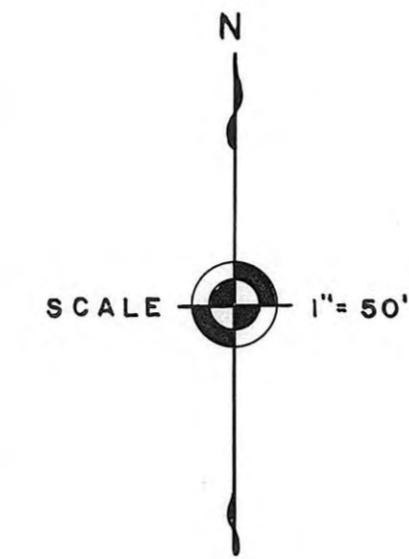


CATHEDRAL HEIGHTS ADDITION

VICTORIA, KANSAS



SURVEYOR'S CERTIFICATE:

I, hereby certify that I have surveyed the following described land and have platted the same into lots and blocks with dimensions as shown on the accompanying plat.

J. L. K...
Surveyor

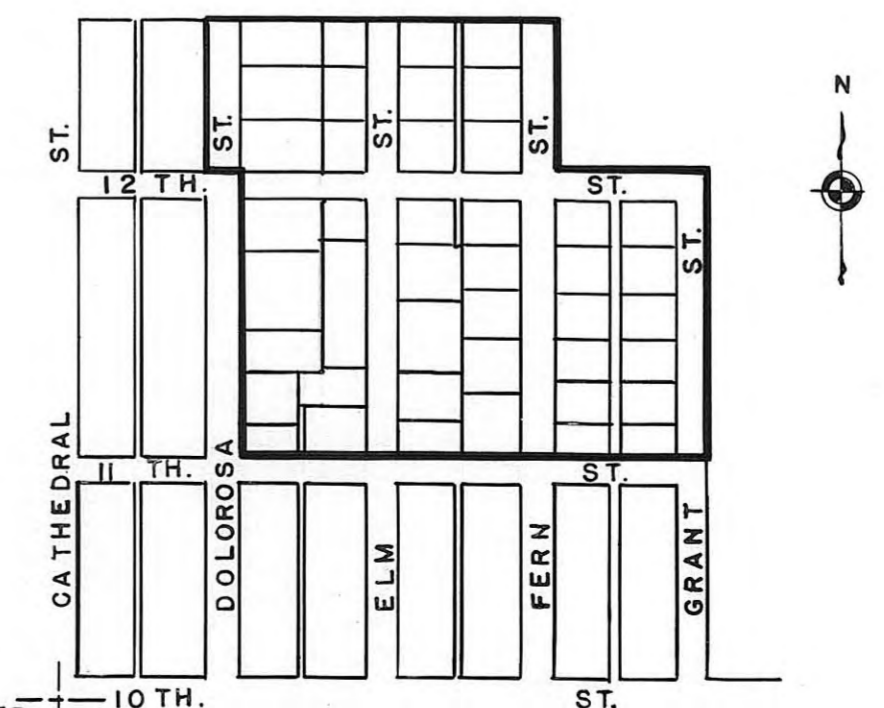
LEGAL DESCRIPTION:

A tract of land lying in the SW 1/4 of Section 6, Township 14 S, Range 16 W of the sixth Principal Meridian, more particularly described as follows: Commencing at the SW Corner of said section; thence N. 0° 00', 370 ft. along the west line of said section; thence N. 89° 32' E, 275 ft. to the point of beginning, said point being 40 feet North of the N.W. Corner of Block 3, Goetz Addition to the City of Victoria; thence N. 89° 32' E, 245 ft.; thence S. 89° 54' E, 484 ft.; thence N. 0° 00', 449 ft.; thence N. 89° 54' W, 242 ft.; thence N. 0° 00', 240 ft.; thence N. 89° 54' W, 242 ft.; thence S. 89° 32' W, 295 ft.; thence S. 0° 00', 244 ft.; thence N. 89° 32' E, 50 ft.; thence S. 0° 00', 445 ft.; to the point of beginning.

CERTIFICATION OF CITY APPROVAL:

I, hereby certify this plat has been submitted to and approved by the City Council of the City of Victoria, Kansas on this 14th day of Nov. 1955.

Attest: *J. T. Pfeiffer* City Clerk
Christie Sanders Mayor
L. L. ... City Attorney



SW CORNER
SEC. 6, TWP. 14 S,
RANGE 16 W.

LOCATION MAP

EVANS RONDEAU and Associates
ENGINEERS AND ARCHITECTS
GREAT BEND, KANSAS