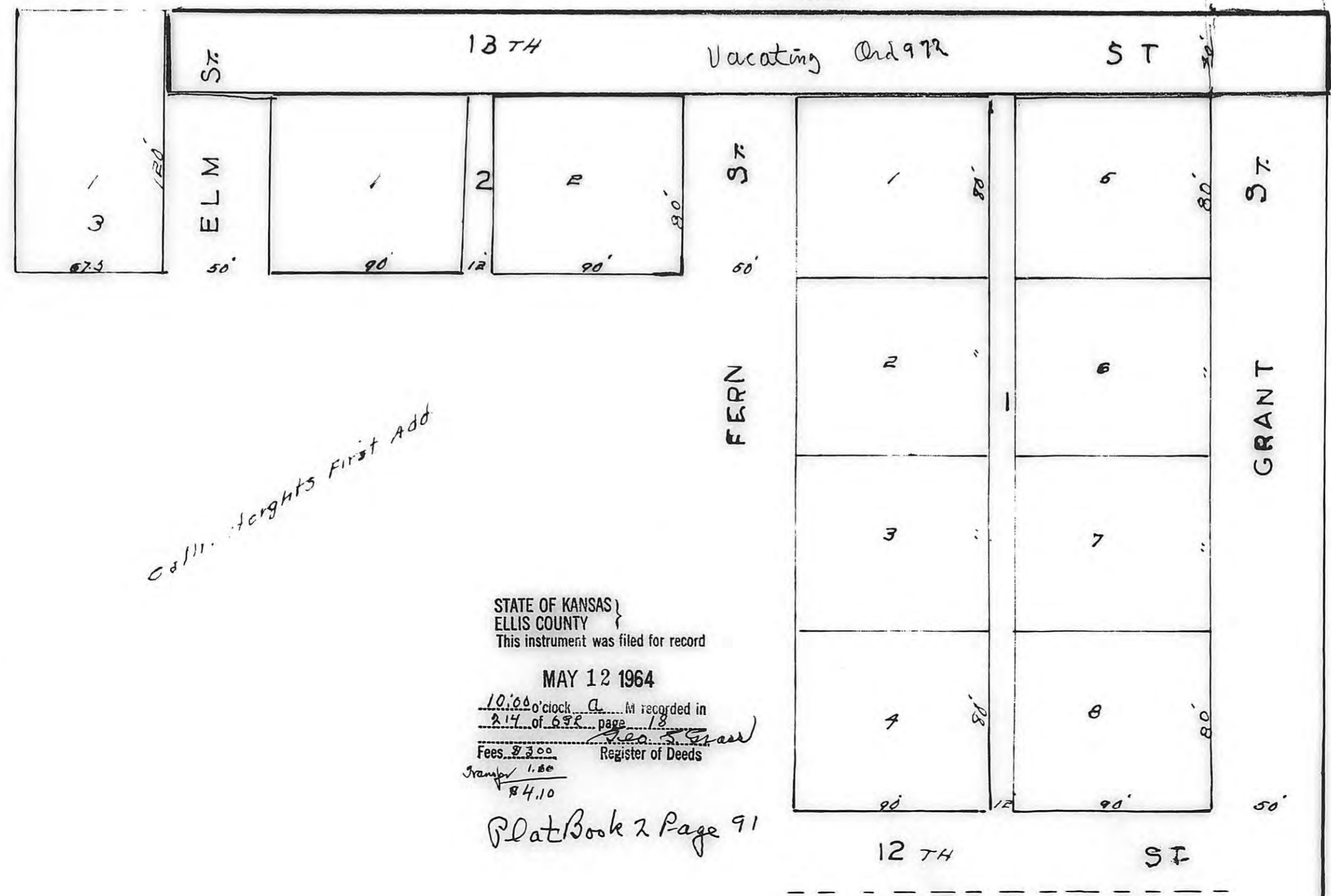


THIS IS A DIRECT PHOTOGRAPHIC REPRODUCTION OF THE OFFICIAL INSTRUMENT (RECORDED PLAT).

THIS REPRODUCTION WAS MADE BY BUCHER & WILLIS CONSULTING ENGINEERS, PLANNERS & ARCHITECTS IN NOVEMBER, 1979.

CATHEDRAL HEIGHTS SECOND ADDITION TO VICTORIA KANSAS

Ordinance 972 Vacating 13th St Dec 13 1965
234622168



Beginning at a point 95' East + 785' North of South West Corner - Sec. 6
... 1st & 8th PM. Said Point being
44' + 50' E. of North East Corner Lot 12
Block 5 Cathedral Heights Add to Victoria
Kansas. 1' Hence North 360' Hence West
60' Hence South 120' Hence East 350'
Hence South 240' Hence East to Point
of Beginning. 242'

I C.J. Londitsch Licensed
Prof. Engineer hereby certify that
this is a true & correct Plat of
Cathedral Heights Second Addition
the City of Victo.

C.J. Londitsch

This Plat approved this day
of March 1964, by the Governing Body
of the City of Victoria Kansas.

City Clerk

STATE OF KANSAS
ELLIS COUNTY
This instrument was filed for record

MAY 12 1964

10:00 o'clock A.M. recorded in
214 of 672 page 18
Fees \$3.00
Stamp 1.10
\$4.10
Register of Deeds

Plat Book 2 Page 91