



RESOLUTION OF THE BOARD OF ELLIS COUNTY COMMISSIONERS

WHEREAS, the Board of County Commissioners of Ellis County, Kansas, has determined that Cedar Ridge Addition, described as to Ellis County, Kansas, to-wit:

THE NORTH HALF OF THE NORTHEAST QUARTER (N $\frac{1}{2}$ NE $\frac{1}{4}$) OF SECTION 9, TOWNSHIP 13 SOUTH, RANGE 18 WEST OF THE SIXTH P.M.

Direct RH
of Direct RH
Numerical BH
Issued [Signature]

is not being used as a residential community and the best use of the land is to return it to agricultural use, and;

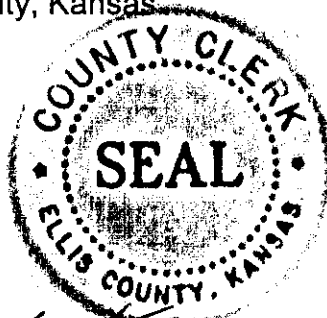
WHEREAS, the Board of County Commissioners of Ellis County, Kansas, acknowledges the desire of the land owner, Graystar Corporation, to vacate the Plat and Dedication of Cedar Ridge Addition to Ellis County, Kansas and finds that it is in the public's best interest to vacate said addition.

NOW, THEREFORE, BE IT RESOLVED BY THE BOARD OF COUNTY COMMISSIONERS OF ELLIS COUNTY, KANSAS, that effective upon publication in the official county newspaper the following resolution be adopted:

Pursuant to K.S.A. 58-2613, the Plat and Dedication of Cedar Ridge Addition to Ellis County, Kansas is hereby vacated.

BE IT FURTHER RESOLVED that this resolution shall be published once in the official county newspaper and shall be in effect from and after its date of publication.

Adopted this 11th day of April , 2011, by the Board of Ellis County Commissioners, Ellis County, Kansas



ATTEST:

Alberta Klaus
Alberta Klaus, County Clerk

BOARD OF COUNTY COMMISSIONERS OF ELLIS COUNTY, KANSAS

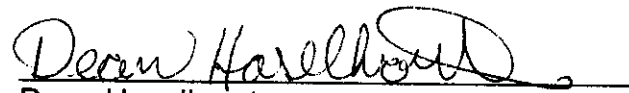
Swede Holmgren
Swede Holmgren

Glenn D. Diehl
Glenn D. Diehl

STATE OF KANSAS | MAY 23 2011
ELLIS COUNTY
This instrument was filed for record
2:30 o'clock of Record in Book page 523
Fees 12.00 Register of Deeds



Co. Clerk


Dean Haselhorst

PLAT OF
CEDAR RIDGE ADDITION
ELLIS COUNTY, KANSAS

LEGAL DESCRIPTION:

The North Half (N/2) of the Northeast Quarter (NE/4) of Section Nine (9), Township Thirteen (13) South, Range Eighteen (18) West, of the Sixth Principal Meridian, Ellis County, Kansas.

STREETS & EASEMENTS:

Streets and alleys as shown on this plat and not heretofore dedicated to and for public use are hereby dedicated.

Easements are hereby dedicated for public use, as utility easement right-of-way, which are shown as lying between the dashed lines in widths indicated and as set forth on this plat, and said easements may be employed for the purpose of installing, repairing and maintaining gas lines, electric lines, telephone lines, and all other forms and types of public utilities, now or heretofore used, by the public over, under and along the strips marked "Utility Easement".

OWNERS CERTIFICATE:

Know all men by these presents, that I the undersigned property owner of the land above described, have caused the same to be surveyed and platted into lots, the same to be known as CEDAR RIDGE ADDITION in Ellis County, Kansas.

Graystar Corporation:
Kenneth Vehige
Kenneth Vehige, President

NOTARY CERTIFICATE:

State of Kansas, County of Ellis, ss:

Be it remembered that on this 10th day of July, 2003, before me, a notary public in and for the County of Ellis and the State of Kansas, came Kenneth Vehige, president of Graystar Corporation, to the foregoing instrument of writing and duly acknowledge the execution of same. In testimony whereof, I have hereunto set my hand and affixed my notarial seal the day and year above written.

Notary Public Anne Dolan
My Commission Expires: 5-27-07



APPROVALS:

This plat has been submitted to and approved by the Hays, Ellis County Planning Commission this 15 day of July, 2003.

Joe Beldra Secretary
Larry Dard Chairman

The dedications shown on this plat are accepted by the Board of County Commissioners of Ellis County, Kansas this 11th day of August, 2003.

Alberta Klamm County Clerk
Christopher Howell Chairman

This plat is hereby approved by me this 31st day of July, 2003.

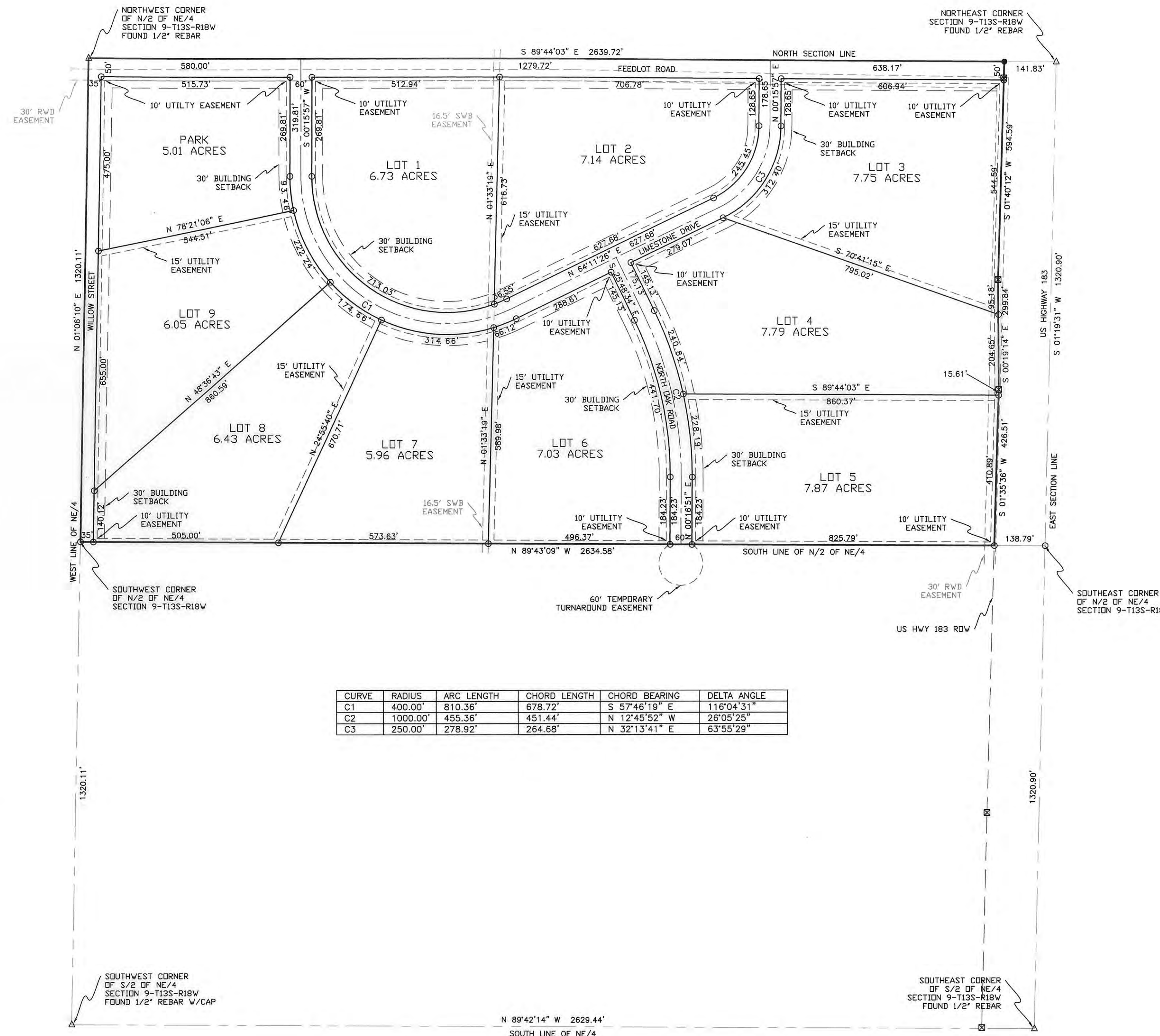
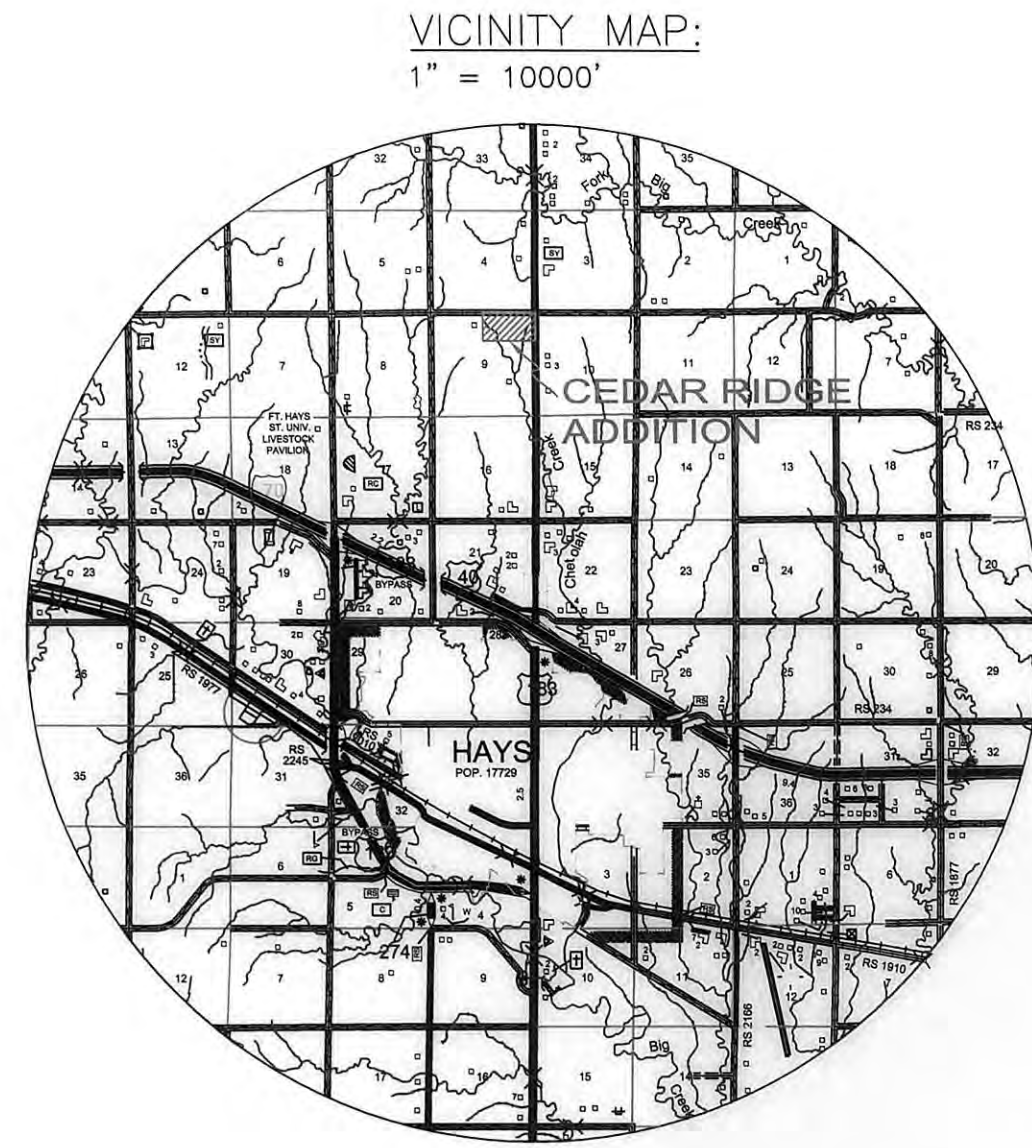
William Jeter
William Jeter, Ellis County Counselor

RECORDED:

State of Kansas, County of Ellis, ss

This is to certify that this instrument was filed for record in the Register of Deeds office this 12 day of August, 2003 in Book Cal Page 398.

Plat & Record - BK: 511 Pg: 859
Rec'd. 8-2003-10 - BK: 511 Pg: 366
Rebecca Hurray Register of Deeds
Mary Ann King Deputy



CURVE	RADIUS	ARC LENGTH	CHORD LENGTH	CHORD BEARING	DELTA ANGLE
C1	400.00'	810.36'	678.72'	S 57°46'19" E	116°04'31"
C2	1000.00'	455.36'	451.44'	N 12°45'52" W	26°05'25"
C3	250.00'	278.92'	264.68'	N 32°13'41" E	63°55'29"



LEGEND:

- = 3/4" Rebar w/cap Found stamped "BWR HAYS, KS"
- = 5/8" Rebar w/cap Set stamped "CSM LS 1367"
- = Right-of-way Marker

NOTE: dimensions on curved lines are arc lengths

REVIEW SURVEYOR'S CERTIFICATE:
State of Kansas, County of Ellis, ss:

I hereby certify that the review of this plat was found to be in compliance with the requirements of K.S.A. 58-2005. Approved this 9th day of July, 2003.



Douglas L. Carlson
Kansas Reg. No. 715

SURVEYOR'S CERTIFICATE:

I, Darrell E. Christen, a Registered Land Surveyor in the State of Kansas, do hereby certify this plat to be true and correct to the best of my knowledge.



Darrell E. Christen
Kansas Reg. No. 1367

Ken Vehige 2900 Barclay Dr. Hays, KS 67601 (785) 625-5025	CSM Carlson's Surveying & Mapping, Inc. 1106 E. 27th Street, Suite 6, Hays, KS 67601 (785) 628-3219 -- www.csmgis.com	JOB NO: 10241 SCALE: 1" = 200'	DATE: 02/28/03 SHEET: 1 OF 1
SURVEYED BY: DEC			
DRAWN BY: KMT			
APPROVED BY: DEC			
REV	DESCRIPTION	DATE	BY