

CENTENNIAL ESTATES FIFTH ADDITION

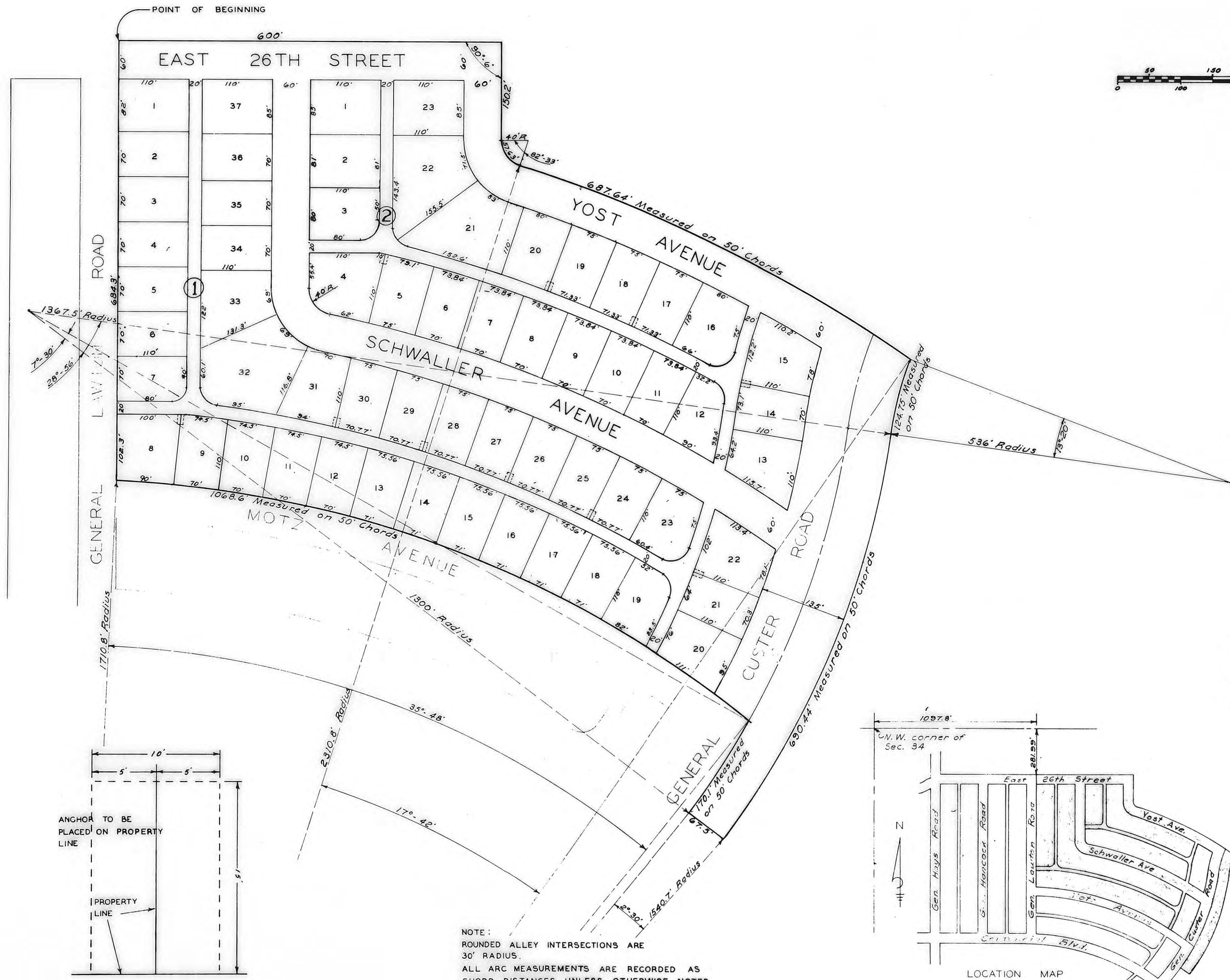
TO THE CITY OF HAYS KANSAS



LEGAL DESCRIPTION

A TRACT OF LAND IN THE NORTHWEST ONE-QUARTER OF SECTION 34, TOWNSHIP 13 SOUTH, RANGE 18 WEST OF THE SIXTH PRINCIPAL MERIDIAN, ELLIS COUNTY, KANSAS, AND FURTHER DESCRIBED AS FOLLOWS:

STARTING AT A POINT WHICH IS 1,097.8 FEET EAST AND 281.99 FEET SOUTH OF THE NORTHWEST CORNER OF SECTION 34; THENCE SOUTH, PARALLEL TO THE WEST LINE OF SECTION 34, 684.3 FEET; THENCE EASTERLY AND RIGHT ON A CURVE OF 1,710.8 FOOT RADIUS, INTERNAL ANGLE OF 35 DEGREES 48 MINUTES, A DISTANCE OF 1,068.6 FEET, MEASURED IN 50 FOOT CHORDS; THENCE SOUTHEASTERLY AND RIGHT ON A CURVE OF 1,300 FOOT RADIUS, INTERNAL ANGLE OF 7 DEGREES 30 MINUTES, FOR A DISTANCE OF 170.1 FEET, MEASURED IN 50 FOOT CHORDS; THENCE SOUTHEASTERLY AND RIGHT ON A CURVE OF 1,540.7 FOOT RADIUS, INTERNAL ANGLE OF 2 DEGREES 30 MINUTES, A DISTANCE OF 67.5 FEET, MEASURED IN 50 FOOT CHORDS; THENCE NORTHEASTERLY AND LEFT ON A CURVE OF 1,367.5 FOOT RADIUS, INTERNAL ANGLE OF 28 DEGREES 56 MINUTES, A DISTANCE OF 690.44 FEET, MEASURED IN 50 FOOT CHORDS; THENCE NORTHEASTERLY AND RIGHT ON A CURVE OF 536 FOOT RADIUS, INTERNAL ANGLE OF 13 DEGREES 20 MINUTES, A DISTANCE OF 124.75 FEET, MEASURED IN 50 FOOT CHORDS; THENCE NORTHWESTERLY AND LEFT ON A CURVE OF 2,310.8 FOOT RADIUS, INTERNAL ANGLE OF 17 DEGREES 42 MINUTES, A DISTANCE OF 687.64 FEET, MEASURED IN 50 FOOT CHORDS; THENCE RIGHT ON A CURVE OF 40 FOOT RADIUS, INTERNAL ANGLE OF 82 DEGREES 33 MINUTES, AN ARC DISTANCE OF 57.63 FEET; THENCE NORTH, PARALLEL TO THE WEST LINE OF SECTION 34, 150.2 FEET; THENCE WEST AT AN INTERNAL ANGLE OF 90 DEGREES 6 MINUTES, 600 FEET TO THE POINT OF BEGINNING.



Ordinance 223-250
Resolution 223-251
Dedication 223-252

STATE OF KANSAS
ELLIS COUNTY
This instrument was filed for record
OCT 18 1965
4:00 o'clock P.M. recorded in
of page 10
Fees \$ 350
Seal \$ 600
Register of Deeds

ENGINEER'S CERTIFICATE
I, JOHN W. SMITH, A LICENSED PROFESSIONAL ENGINEER, DO HEREBY CERTIFY THIS PLAT TO BE TRUE AND CORRECT TO THE BEST OF MY KNOWLEDGE.

SIGNED THIS 14 DAY OF October, 1965,
John W. Smith
JOHN W. SMITH, P.E.

I HEREBY CERTIFY THAT THIS PLAT WAS FIRST SUBMITTED TO THE CITY PLANNING COMMISSION AND BY THE CITY PLANNING COMMISSION TO THE GOVERNING BODY OF THE CITY OF HAYS, KANSAS AND BY SUCH GOVERNING BODY DULY APPROVED ON 14 October, 1965.

Dorothy Soderblom
DOROTHY SODERBLOM
CITY CLERK

THIS IS A DIRECT PHOTOGRAPHIC REPRODUCTION OF THE OFFICIAL INSTRUMENT (RECORDED PLAT).
THIS REPRODUCTION WAS MADE BY BUCHER & WILLIS CONSULTING ENGINEERS, PLANNERS & ARCHITECTS IN NOVEMBER, 1979.

NOTE:
ROUNDED ALLEY INTERSECTIONS ARE 30' RADIUS.
ALL ARC MEASUREMENTS ARE RECORDED AS CHORD DISTANCES UNLESS OTHERWISE NOTED.

DESIGNED BY	JOHN W. SMITH
DRAWN BY	CON CONSULTING ENGINEER AND ASSOCIATES
CHECKED BY	JMS
DATE	AUG 65 65-227
JOB NO.	HAYS KANSAS
CENTENNIAL ESTATES FIFTH ADDITION	
HAYS KANSAS	
SHEET	1 OF 1