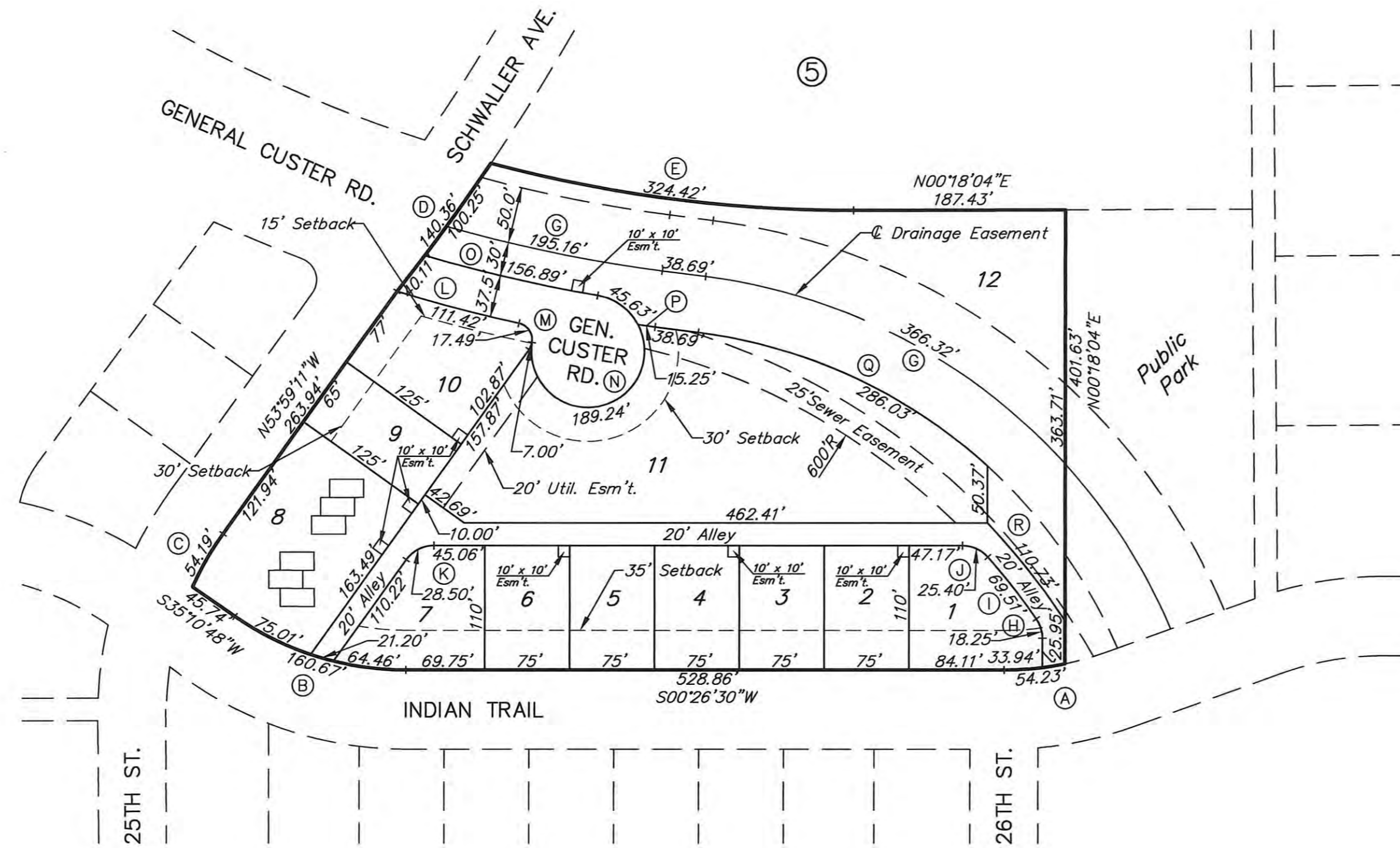


REPLAT OF LOTS 2 - 4, BLOCK 5, CENTENNIAL ESTATES SIXTH ADDITION HAYS, KANSAS



LEGAL DESCRIPTION:

Lots Two, Three, and Four of Block 5, in Centennial Estates Sixth Addition to the City of Hays, Kansas, located in the Northwest Quarter of Section 34, Township 13 South, Range 18 West of the Sixth Principal Meridain, Ellis County, Kansas.

STREETS & EASEMENTS:

Streets, roads, and alleys as shown on this plat and not heretofore dedicated to and for public use are hereby dedicated. Easements are hereby dedicated for public use, as utility easement right-of-way, which are shown as lying between the dashed lines in widths indicated and as set forth on this plat, and said easements may be employed for the purpose of installing, repairing and maintaining gas lines, electric lines, telephone lines, and all other forms and types of public utilities, now or hereafter used, by the public over, under and along the strips marked "Utility Esm't."

All easements previously dedicated as part of the Indian Woods Townhouse Planned Unit Development are hereby rescinded.

OWNER'S CERTIFICATE:

Know all men by these presents, that we, the undersigned property owners of the land above described have caused the same to be surveyed and platted into Lots, Streets, Roads, Alleys and Easements, the same to be known as "Replat of Lots 2 - 4, Block 5, Centennial Estates Sixth Addition" in Hays, Kansas. The Streets, Roads and Alleys are hereby dedicated to and for the use of public, and easements as indicated on the accompanying plat are hereby granted to the public for the purpose of constructing, operating, maintaining, and repairing all public utilities.

Henry Schwaller IV
Henry Schwaller IV, President
HAMILTON INVESTMENTS

NOTARY CERTIFICATE:

State of Kansas, County of Ellis, ss:
Be it remembered that on this 14th day of February, 1996, before me, a Notary Public in and for said County and State, came Henry Schwaller IV, to me personally known to be the same person who executed the foregoing instrument of writing and duly acknowledged the execution of same. In testimony whereof, I have hereunto set my hand and affixed my notarial seal, the day and year above written.

NOTARY PUBLIC - State of Kansas
PAULLA I. HARRIS
My Appt. Exp. 2-3-97

Paulla I. Harris
Notary Public

My Commission Expires: February 3, 1997

SURVEYOR'S CERTIFICATE:

I, Harvey Ruder, a licensed and Registered Land Surveyor in the State of Kansas, do hereby certify this plat to be true and correct to the best of my knowledge.

Harvey Ruder 1-24-96
Harvey Ruder Date



APPROVALS:

This plat, a replat of Lots 2 - 4, Block 5, Centennial Estates Sixth Addition has been submitted to and approved by the Hays Planning Commission this 22 day of January, 1996.

Larry Gould
CHAIRMAN
Kim Clayton
SECRETARY

The dedications shown on this plat accepted by the City Commission of the City of Hays, Kansas, this 8th day of Feb, 1996.

Jason Litsam
MAYOR

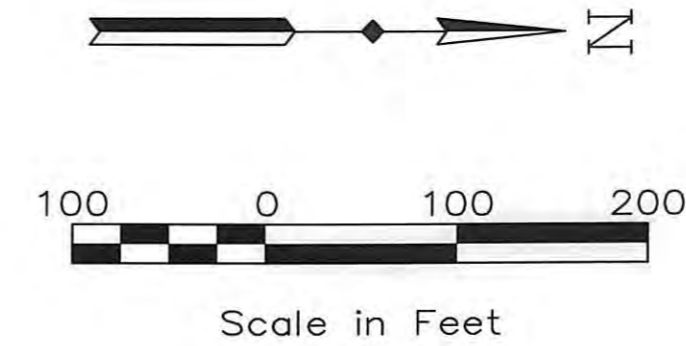
ATTEST: *Carol Schuchter* City Clerk



CURVE DATA				
CURVE	Δ	R	T	Lc
A	11°43'29"	265.00'	27.21'	54.23'
B	34°44'18"	265.00'	82.89'	160.67'
C	11°30'01"	270.00'	27.19'	54.19'
D	3°59'58"	2010.80'	70.21'	140.36'
E	15°03'47"	1233.99'	163.15'	324.42'
F	8°36'46"	1298.30'	97.77'	195.16'
G	40°24'07"	519.50'	191.15'	366.32'
H	34°51'42"	30.00'	9.42'	18.25'
I	6°38'16"	600.00'	34.79'	69.51'
J	48°30'17"	30.00'	13.52'	25.40'
K	54°25'41"	30.00'	15.43'	28.50'
L	4°40'27"	1365.80'	55.74'	111.42'
M	66°48'17"	15.00'	9.89'	17.49'
N	269°08'43"	50.00'	50.75'	234.87'
O	6°46'02"	1328.30'	78.53'	156.89'
P	00°38'53"	1348.30'	7.63'	15.25'
Q	34°54'23"	469.50'	147.61'	286.03'
R	10°13'58"	620.00'	55.51'	110.73'



LOCATION MAP



RECORDED:

State of Kansas, County of Ellis, ss:

This is to certify that this instrument was filed for record in the Register of Deeds Office on the 19th day of Feb, 1996 in Book 246, Page 344.

Rose Ann Rupp
REGISTER OF DEEDS
DEPUTY

Replat & Redi - 414 - 587
Relet. 414 - 591

L:\03504\NEWPLAT.DWG