

20.02 3/4 chs

East 2-20 1/2 110 58 E

80.11 ch

40.05 1/4 chs

State of Kansas }
Ellis County } ss.

I certify that the foregoing Plat is a true and correct copy of the Original now on file in my office.

Witness my hand and official seal this 15th day of February A.D. 1879

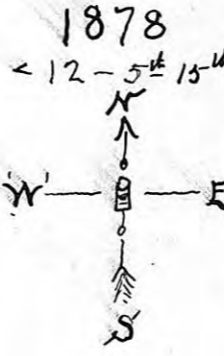
J. W. Gunter
Register of Deeds

PLAT
of
COLLYER

as laid out in

SEC. 5, T. 12, S. R. 25, W.

-TREGO COUNTY KANSAS

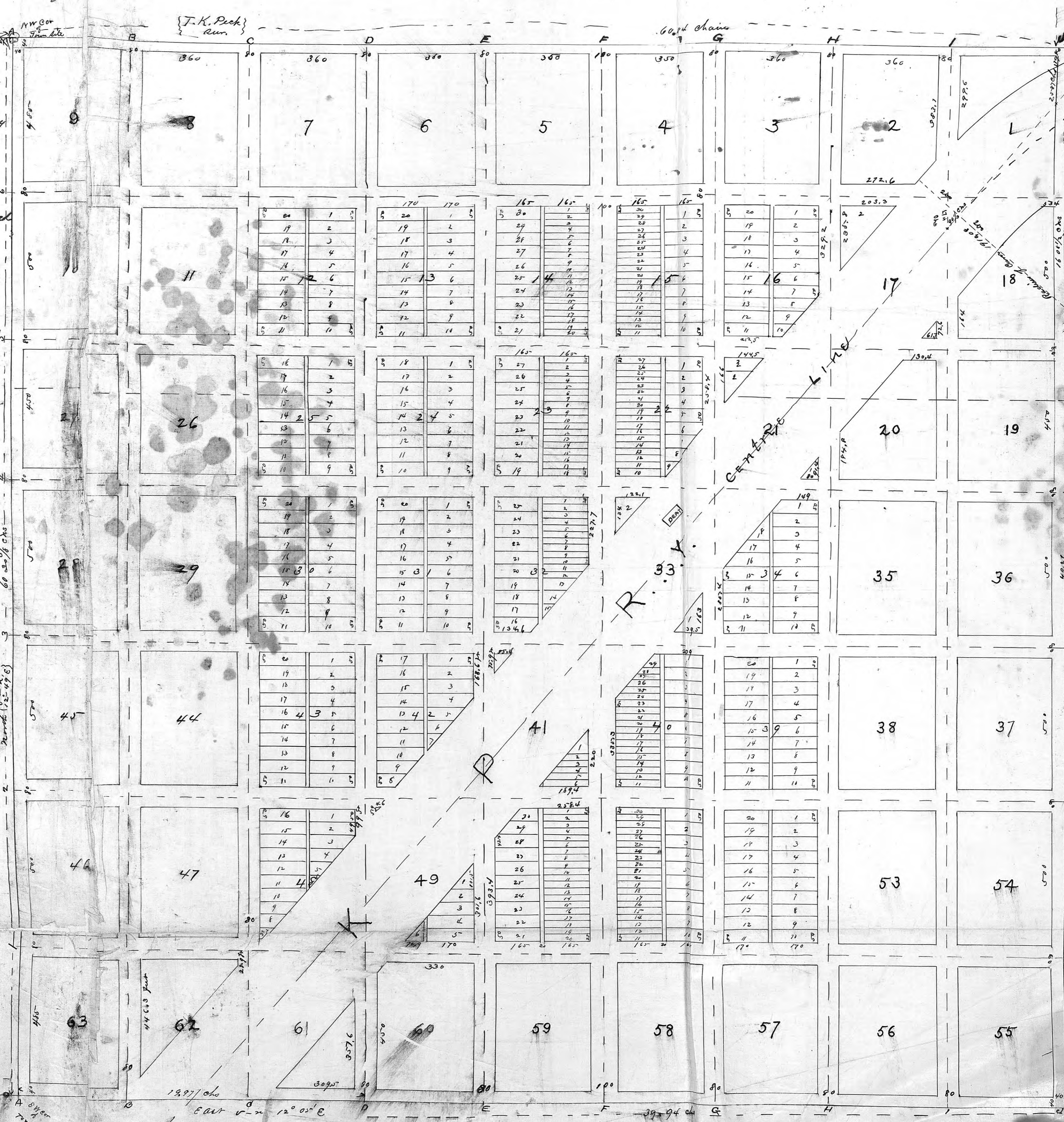


Variation of Needle
11° 25' E

State of Kansas }
Ellis County } ss.

On this 11th day of February A.D. 1879 before me the undersigned Clerk of the District Court personally came Albert G. Mann to me well known to be the proprietor of the land at the time the above plat was surveyed and plotted and acknowledged the plat to be a true and correct plat of Collyer being in Section 5 Town 12 Range 25 West in Trego Co. Kansas.

Chas. E. Creasy
County Clerk
of Ellis County Kansas.



Collyer Kans 1879-2-7th

I certify this plat to be drawn in accordance with my surveys actually made in the field

Thomas H. Tucker
Deputy Sur of Ellis Co
Kans

19.97 chs

East 2-20 1/2 12 01 E

39.94 chs