

THIS IS A DIRECT PHOTOGRAPHIC REPRODUCTION OF THE OFFICIAL INSTRUMENT (RECORDED PLAT).

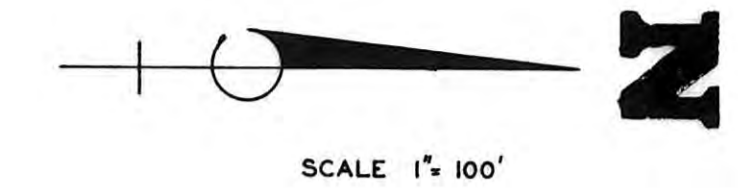
THIS REPRODUCTION WAS MADE BY BUCHER & WILLIS CONSULTING ENGINEERS, PLANNERS & ARCHITECTS IN JUNE 1979

COUNTRY ACRES

LEGAL DESCRIPTION

A TRACT OF LAND IN THE S.W. 1/4 OF SECTION 28, T13 S, R18 W OF THE 6TH P.M., ELLIS COUNTY, KANSAS, AND FURTHER DESCRIBED AS FOLLOWS.

BEGINNING AT THE S.E. CORNER OF THE S.W. 1/4; OF SECTION 28; THENCE NORTH AT AN ANGLE OF 90° 57' WITH THE SOUTH LINE OF THE S.W. 1/4 A DISTANCE OF 920 FEET; THENCE NORTH AT AN ANGLE OF 179° 36' A DISTANCE OF 1565 FEET; THENCE WEST PARALLEL TO THE SOUTH LINE OF THE S.W. 1/4 A DISTANCE OF 225 FEET; THENCE SOUTH PARALLEL TO THE EAST LINE OF THE S.W. 1/4 A DISTANCE OF 195 FEET; THENCE SOUTH BY WEST ALONG A CURVE OF 870' RADIUS A CHORD DISTANCE OF 193 FEET; THENCE SOUTH BY EAST ALONG A CURVE OF 887.7' RADIUS A CHORD DISTANCE OF 352 FEET; THENCE SOUTH BY WEST ALONG A CURVE OF 2342.3' RADIUS A CHORD DISTANCE OF 438.8 FEET; THENCE SOUTH A DISTANCE OF 298 FEET TO A POINT ON THE SOUTH LINE OF THE S.W. 1/4 WHICH IS 210 FEET WEST OF THE S.E. CORNER OF THE S.W. 1/4; THENCE EAST 210 FEET TO THE POINT OF BEGINNING.



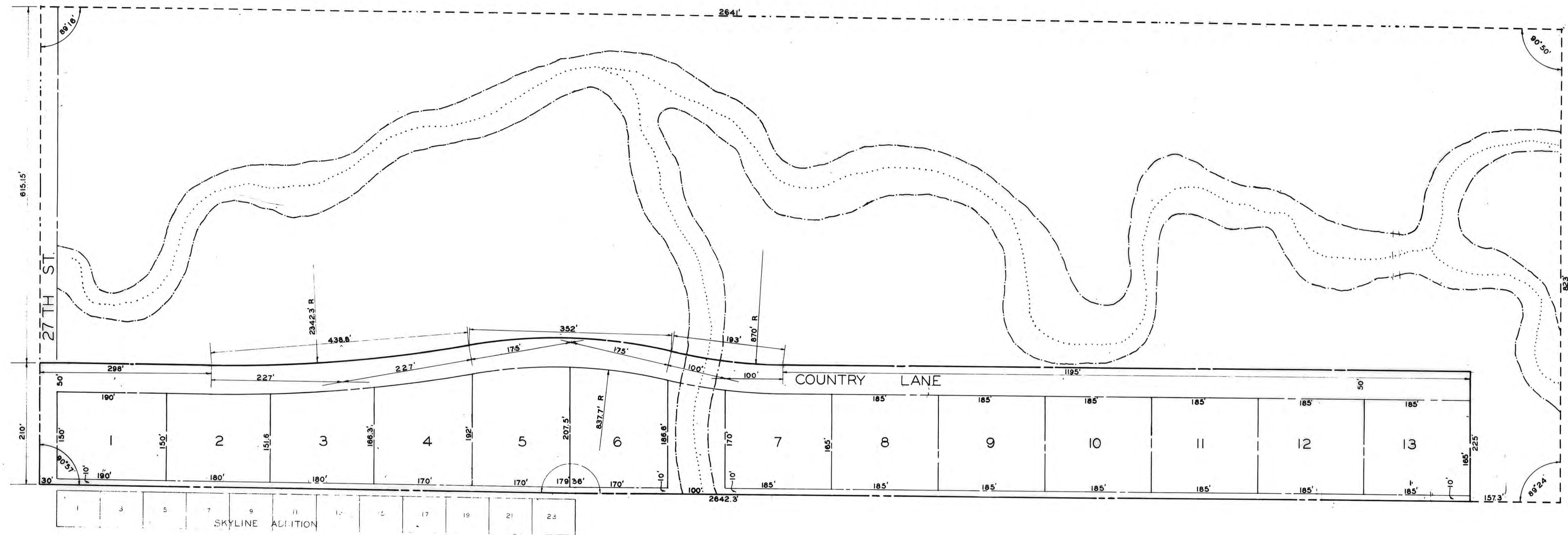
SCALE 1" = 100'

STATE OF KANSAS }
ELLIS COUNTY }
This instrument was filed for record

DEC 2 1959

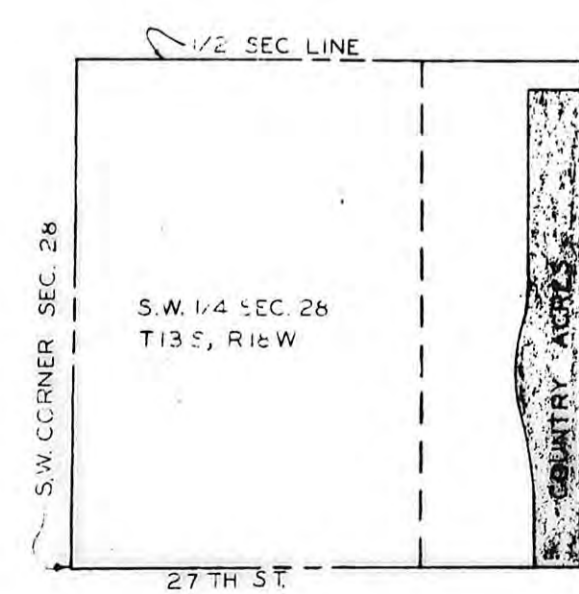
2130
Book 200-01-01-0000-167
Fees: 2.00
1.00
#3.30

Recorded in
M. J. Hammerschmidt
Register of Deeds



I HEREBY CERTIFY THAT THIS PLAT OF COUNTRY ACRES WAS SUBMITTED TO THE ELLIS COUNTY PLANNING BOARD AND BY SAID BOARD TO THE ELLIS COUNTY COMMISSIONERS AND BY SUCH GOVERNING BODY DULY APPROVED ON Nov. 12, 1959.

Ray J. Hammerschmidt
RAY J. HAMMERSCHMIDT
ELLIS COUNTY CLERK



COUNTY ENGINEER'S CERTIFICATE

I, THE UNDERSIGNED, C.J. LOREDITSCH, ELLIS COUNTY ENGINEER AND A LICENSED PROFESSIONAL ENGINEER DO HEREBY APPOINT JOHN W. SMITH DEPUTY COUNTY ENGINEER FOR THE PURPOSE OF SURVEYING AND PLATTING COUNTRY ACRES, ELLIS COUNTY, KANSAS.

SIGNED THIS 12th DAY OF November 1959
C. J. LOREDITSCH COUNTY ENGINEER
ELLIS COUNTY

ENGINEER'S CERTIFICATE

I THE UNDERSIGNED, JOHN W. SMITH, A LICENSED PROFESSIONAL ENGINEER, DO HEREBY CERTIFY THIS PLAT TO BE TRUE AND CORRECT TO THE BEST OF MY KNOWLEDGE.

SIGNED THIS 12th DAY OF November, 1959
John W. Smith
JOHN W. SMITH, P.E.

I HEREBY CERTIFY THAT THIS PLAT WAS FIRST SUBMITTED TO THE CITY PLANNING COMMISSION AND BY THE CITY PLANNING COMMISSION TO THE GOVERNING BODY OF THE CITY OF HAYS, KANSAS, AND BY SUCH GOVERNING BODY DULY APPROVED ON November 12, 1959.

Dorothy Soderblom
DOROTHY SODERBLOM
CITY CLERK

DRAWN BY D. J. B.	JOHN W. SMITH CONSULT. ENGR. & ASSOC. HAYS, KANSAS
CHECKED BY J. W. S.	
DATE SEPT. 59	JOB NO. 297 - 59

COUNTRY ACRES SHEET 1 OF 1