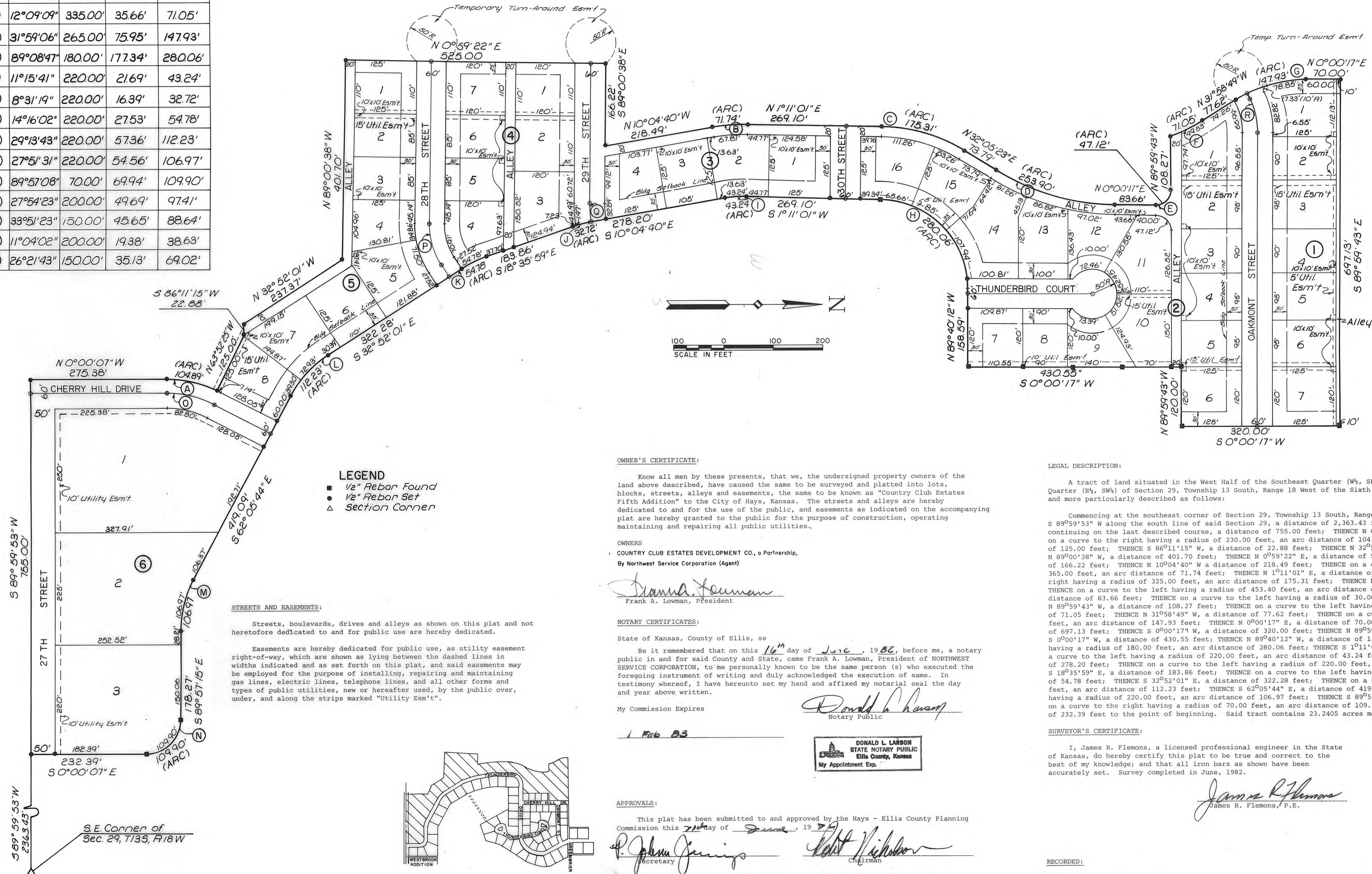


PLAT OF COUNTRY CLUB ESTATES FIFTH ADDITION HAYS, KANSAS

CURVE DATA			
CURVE	Δ	R	LC
A	26°07'42"	230.00'	53.37'
B	11°15'41"	365.00'	35.99'
C	30°54'22"	325.00'	89.84'
D	32°05'06"	453.40'	130.38'
E	90°00'00"	30.00'	30.00'
F	12°09'09"	335.00'	35.66'
G	31°59'06"	265.00'	75.95'
H	89°08'47"	180.00'	177.34'
I	11°15'41"	220.00'	21.69'
J	8°31'19"	220.00'	16.39'
K	14°16'02"	220.00'	27.53'
L	29°13'43"	220.00'	57.36'
M	27°5'31"	220.00'	54.56'
N	89°57'08"	70.00'	69.94'
O	27°54'23"	200.00'	49.69'
P	33°5'23"	150.00'	45.65'
Q	11°04'02"	200.00'	19.38'
R	26°21'43"	150.00'	35.13'



LEGEND
 ■ 1/2" Rebar Found
 ● 1/2" Rebar Set
 ▲ Section Corner

STREETS AND EASEMENTS:
 Streets, boulevards, drives and alleys as shown on this plat and not heretofore dedicated to and for public use are hereby dedicated.
 Easements are hereby dedicated for public use, as utility easement right-of-way, which are shown as lying between the dashed lines in widths indicated and as set forth on this plat, and said easements may be employed for the purpose of installing, repairing and maintaining gas lines, electric lines, telephone lines, and all other forms and types of public utilities, new or hereafter used, by the public over, under, and along the strips marked "Utility Esm't".

OWNER'S CERTIFICATE:

Know all men by these presents, that we, the undersigned property owners of the land above described, have caused the same to be surveyed and platted into lots, blocks, streets, alleys and easements, the same to be known as "Country Club Estates Fifth Addition" to the City of Hays, Kansas. The streets and alleys are hereby dedicated to and for the use of the public, and easements as indicated on the accompanying plat are hereby granted to the public for the purpose of construction, operating and maintaining and repairing all public utilities.

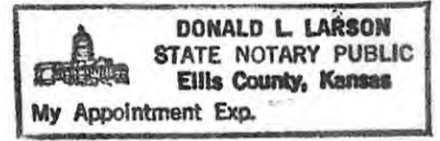
OWNERS
 COUNTRY CLUB ESTATES DEVELOPMENT CO., a Partnership,
 By Northwest Service Corporation (Agent)

Frank A. Lowman
 Frank A. Lowman, President

NOTARY CERTIFICATES:

State of Kansas, County of Ellis, ss
 Be it remembered that on this 16th day of June, 1982, before me, a notary public in and for said County and State, came Frank A. Lowman, President of NORTHWEST SERVICE CORPORATION, to me personally known to be the same person (s) who executed the foregoing instrument of writing and duly acknowledged the execution of same. In testimony whereof, I have hereunto set my hand and affixed my notarial seal the day and year above written.

My Commission Expires 1 Feb 83
Donald L. Larson
 Notary Public



APPROVALS:

This plat has been submitted to and approved by the Hays - Ellis County Planning Commission this 21st day of June, 1982.
P. John Jennings Secretary
Robert Johnson Chairman

The dedication shown on this plat is accepted by the City Commission of the City of Hays, Kansas, this 31st day of July, 1982.

ATTEST: *George Edley* Mayor
George Edley City Clerk

LEGAL DESCRIPTION:

A tract of land situated in the West Half of the Southeast Quarter (W4, SE4) and in the East Half of the Southwest Quarter (E4, SW4) of Section 29, Township 13 South, Range 18 West of the Sixth Principal Meridian, in Ellis County, Kansas, and more particularly described as follows:
 Commencing at the southeast corner of Section 29, Township 13 South, Range 18 West; THENCE on an assumed bearing of S 89°59'53" W along the south line of said Section 29, a distance of 2,363.43 feet to the Point of Beginning; THENCE continuing on the last described course, a distance of 755.00 feet; THENCE N 0°00'07" W, a distance of 275.38 feet; THENCE on a curve to the right having a radius of 230.00 feet, an arc distance of 104.89 feet; THENCE N 63°52'25" W, a distance of 125.00 feet; THENCE S 86°11'15" W, a distance of 22.88 feet; THENCE N 32°52'01" W, a distance of 237.37 feet; THENCE N 89°00'38" W, a distance of 401.70 feet; THENCE N 0°59'22" E, a distance of 525.00 feet; THENCE S 89°00'38" E, a distance of 166.22 feet; THENCE N 10°04'40" W a distance of 218.49 feet; THENCE on a curve to the right having a radius of 365.00 feet, an arc distance of 71.74 feet; THENCE N 1°11'01" E, a distance of 269.10 feet; THENCE on a curve to the right having a radius of 325.00 feet, an arc distance of 175.31 feet; THENCE N 32°05'23" E, a distance of 47.12 feet; THENCE on a curve to the left having a radius of 453.40 feet, an arc distance of 253.90 feet; THENCE N 0°00'17" E, a distance of 83.66 feet; THENCE on a curve to the left having a radius of 30.00 feet, an arc distance of 47.12 feet; THENCE N 89°59'43" W, a distance of 108.27 feet; THENCE on a curve to the left having a radius of 335.00 feet, an arc distance of 71.05 feet; THENCE N 31°58'49" W, a distance of 77.62 feet; THENCE on a curve to the right having a radius of 265.00 feet, an arc distance of 147.93 feet; THENCE N 0°00'17" E, a distance of 70.00 feet; THENCE S 89°59'43" E, a distance of 697.13 feet; THENCE S 0°00'17" W, a distance of 320.00 feet; THENCE N 89°59'43" W, a distance of 120.00 feet; THENCE N 0°00'17" W, a distance of 430.55 feet; THENCE N 89°40'12" W, a distance of 158.59 feet; THENCE on a curve to the left having a radius of 180.00 feet, an arc distance of 280.06 feet; THENCE S 1°11'01" W, a distance of 269.10 feet; THENCE on a curve to the left having a radius of 220.00 feet, an arc distance of 43.24 feet; THENCE S 10°04'40" E, a distance of 278.20 feet; THENCE on a curve to the left having a radius of 220.00 feet, an arc distance of 32.72 feet; THENCE S 18°35'59" E, a distance of 183.86 feet; THENCE on a curve to the left having a radius of 220.00 feet, an arc distance of 54.78 feet; THENCE S 32°52'01" E, a distance of 322.28 feet; THENCE on a curve to the left having a radius of 220.00 feet, an arc distance of 112.23 feet; THENCE S 62°05'44" E, a distance of 419.09 feet; THENCE on a curve to the left having a radius of 220.00 feet, an arc distance of 106.97 feet; THENCE S 89°57'15" E, a distance of 178.27 feet; THENCE on a curve to the right having a radius of 70.00 feet, an arc distance of 109.90 feet; THENCE S 0°00'07" E, a distance of 232.39 feet to the point of beginning. Said tract contains 23.2405 acres more or less.

SURVEYOR'S CERTIFICATE:

I, James R. Flemons, a licensed professional engineer in the State of Kansas, do hereby certify this plat to be true and correct to the best of my knowledge; and that all iron bars as shown have been accurately set. Survey completed in June, 1982.

James R. Flemons
 James R. Flemons, P.E.

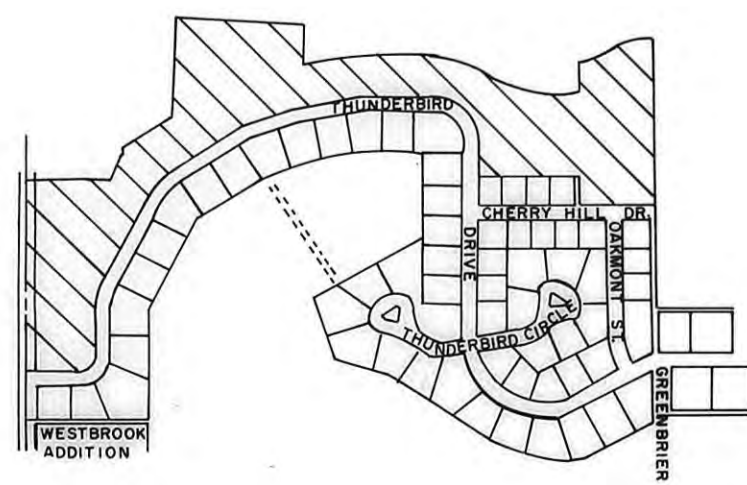


RECORDED:

State of Kansas, County of Ellis, ss

This is to certify that this instrument was filed for record in the Register of Deeds Office on the 7 day of Sept, 1982, in Book Plat Cabinet Page 300 of 720.
Virginia Herzog
 Registrar of Deeds

S.E. Corner of Sec. 29, T13S, R18W



LOCATION MAP

PREPARED BY
BUCHER & WILLIS
 CONSULTING ENGINEERS, PLANNERS & ARCHITECTS
 SALINA, KANSAS KANSAS CITY, MO.