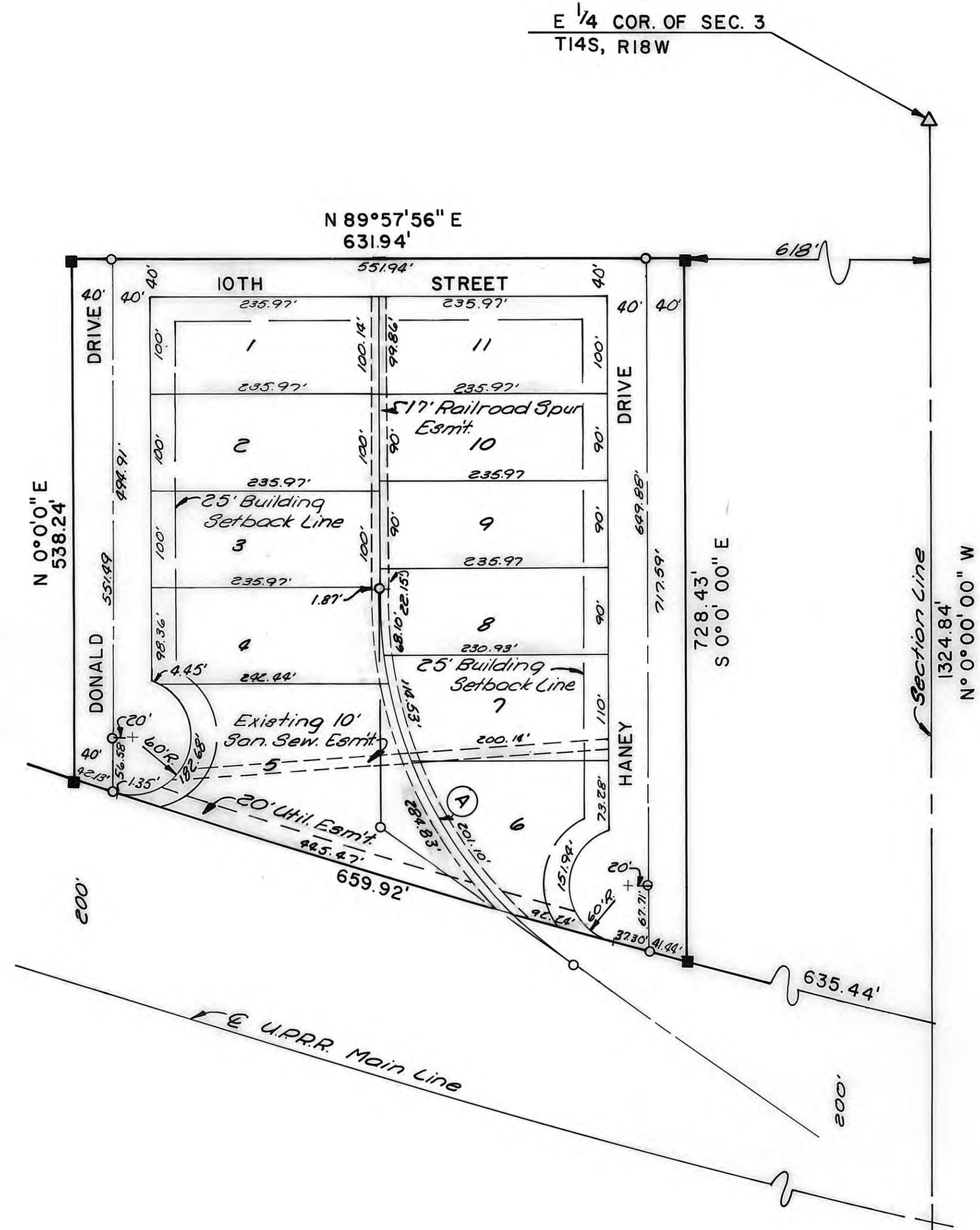
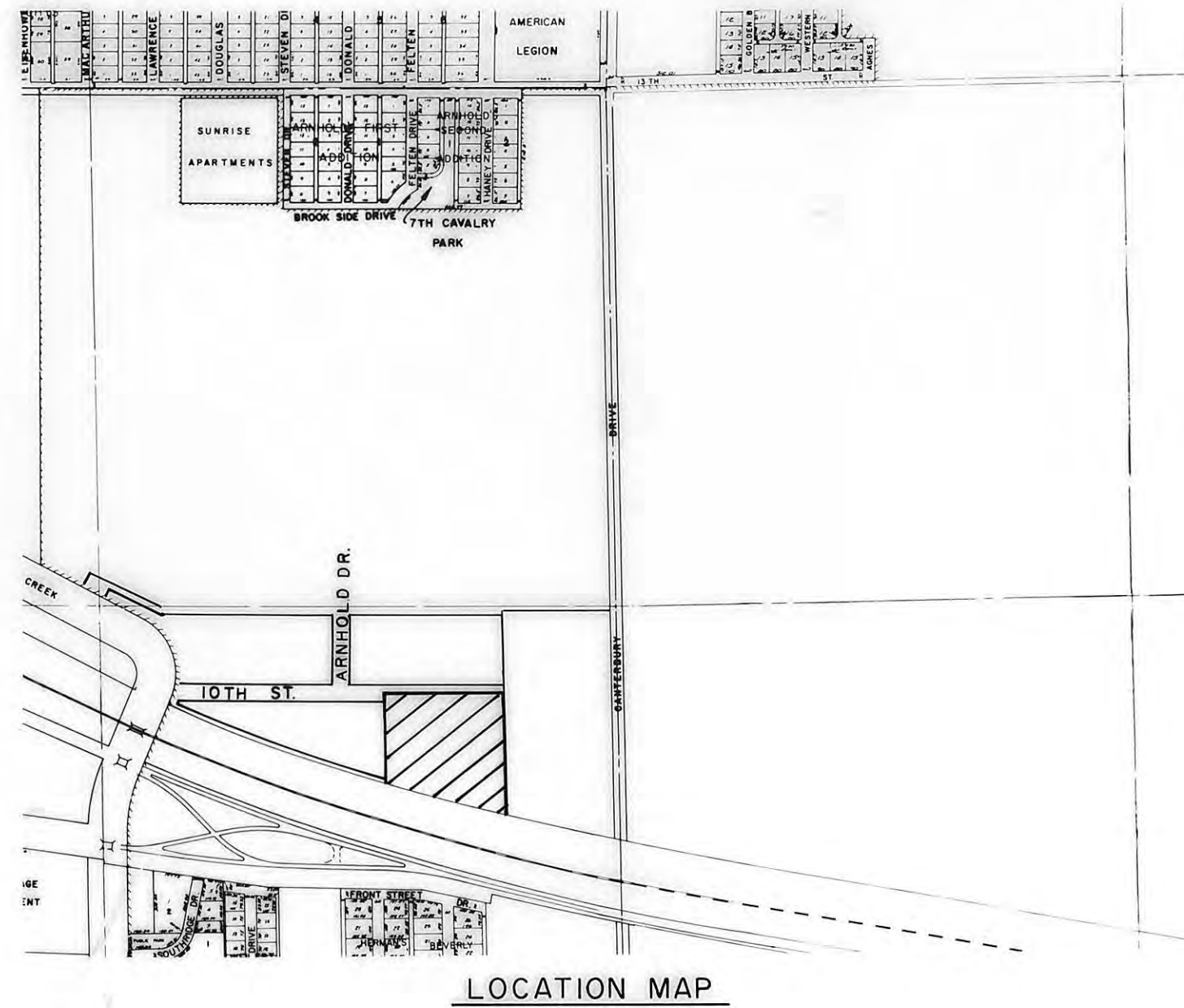
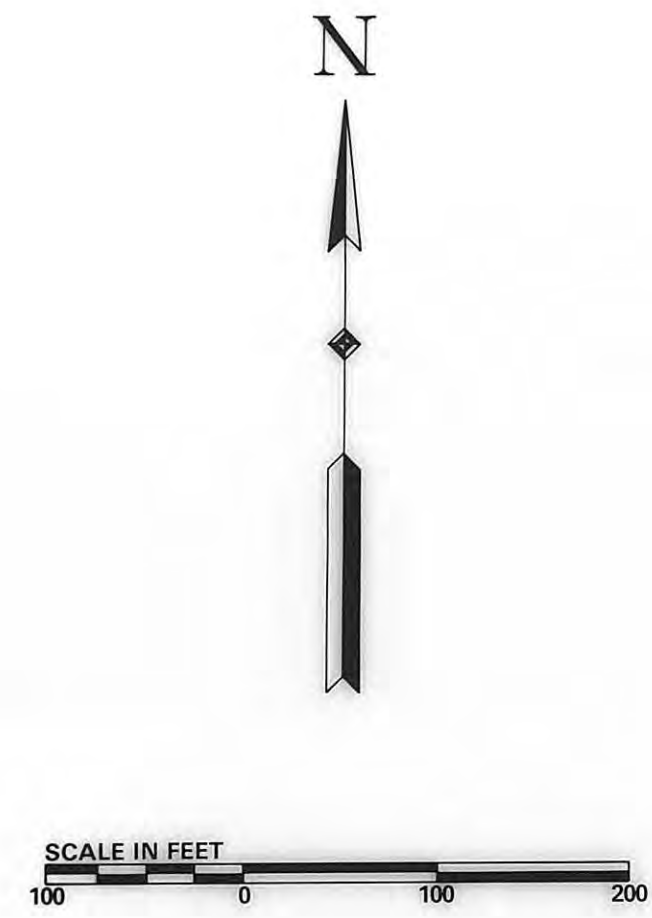


PLAT OF
DAVIS INDUSTRIAL SUB-DIVISION
ELLIS COUNTY, KANSAS



LEGEND
 △ Section 1/4 Corner
 ■ 1/2" Rebar Found

CURVE DATA				
CURVE	Δ	R	T	L
A	5624.10	45928'	246.28	158.12



RECORDED:

State of Kansas, County of Ellis, ss

This is to certify that this instrument was filed for record in the Register of Deeds Office on the 30 day of June, 1980, in Book Plate Cement, Page 277.

Plat & Red'd Bl 301 p 183
 Resolution Bl 301 p 186

Virginia Herzog
 Register of Deeds

LEGAL DESCRIPTION:

A tract of land in the Southeast Quarter (SE $\frac{1}{4}$) of Section 3, Township 14 South, Range 18 West of the 6th Principal Meridian, Ellis County, Kansas and more particularly described as follows:

Commencing at the intersection of the centerline of the Union Pacific Railroad main track and the East line of Section 3, Township 14 South, Range 18 West; THENCE on an assumed bearing of N 0°00'00" W along the East line of said Section 3, a distance of 204.24 feet to the North right-of-way line of said U.P.R.R.; THENCE Northwestwardly along said North right-of-way line on a curve to the right having a radius of 11,259.57 feet, the initial tangent of which has a bearing of N 78°11'40" W, an arc distance of 635.44 feet to the point of beginning; THENCE continuing on the last described curve, an arc distance of 659.92 feet; THENCE N 0°00'00" E, a distance of 538.24 feet; THENCE N 89°57'56" E, a distance of 631.94 feet; THENCE S 0°00'00" E, a distance of 728.43 feet, to the point of beginning. Said tract contains 9.237 acres more or less.

STREETS AND EASEMENTS:

Streets, boulevards, drives and alleys as shown on this plat and not heretofore dedicated to and for public use are hereby dedicated.

Easements are hereby dedicated for public use, as utility easement right-of-way, which are shown as lying between the dashed lines in widths indicated and as set forth on this plat, and said easements may be employed for the purpose of installing, repairing and maintaining gas lines, electric lines, telephone lines, and all other forms and types of public utilities, new or hereafter used, by the public over, under and along the strips marked "Utility Esm't".

OWNER'S CERTIFICATE:

Know all men by these presents, that we, the undersigned property owners of the land above described, have caused the same to be surveyed and platted into lots, blocks, streets, alleys and easements, the same to be known as "Davis Industrial Sub-Division", in Ellis County, Kansas. The streets and alleys are hereby dedicated to and for the use of the public, and easements as indicated on the accompanying plat are hereby granted to the public for the purpose of constructing, operating, maintaining and repairing all public utilities.

DAVIS MUD & CHEMICAL, INC.

By R. E. Davis
 R. E. Davis
 President

NOTARY CERTIFICATE:

State of Kansas, County of Ellis, ss
 Be it remembered that on this 10th day of MAY, 1980, before me, a notary public in and for said County and State, came R.E. Davis, President of Davis Mud & Chemical, Inc., to me personally known to be the same person(s) who executed the foregoing instrument of writing and duly acknowledged the execution of same. In testimony whereof, I have hereunto set my hand and affixed my notarial seal the day and year above written.

My Commission expires 8-3-81
W. A. Boyd
 Notary Public

SURVEYOR'S CERTIFICATE:

I, James R. Flemons, a licensed professional engineer in the State of Kansas, do hereby certify this plat to be true and correct to the best of my knowledge; and that all iron bars as shown have been accurately set. Survey completed in April, 1980.



James R. Flemons
 James R. Flemons, P.E.

APPROVALS:

This plat has been submitted to and approved by the Hays - Ellis County Planning Commission this 19 day of May, 1980.

Marquet E. Smith Secretary
Robert Nishon Chairman

The dedication shown on this plat is accepted by the City Commission of the City of Hays, Kansas, this 19 day of May, 1980.

ATTEST: CITY OF HAYS, KANSAS
Annifer S. Johnson City Clerk
Mike Billinger Mayor

The dedication shown on this plat is accepted by the County Commission of Ellis County, Kansas, this 30th day of June, 1980.

ATTEST: ELLIS COUNTY, KANSAS
Emery G. Rome County Clerk
Blaine T. Dulack Chairman



PREPARED BY
BUCHER & WILLIS
 CONSULTING ENGINEERS, PLANNERS & ARCHITECTS
 SALINA, KANSAS KANSAS CITY, MO.