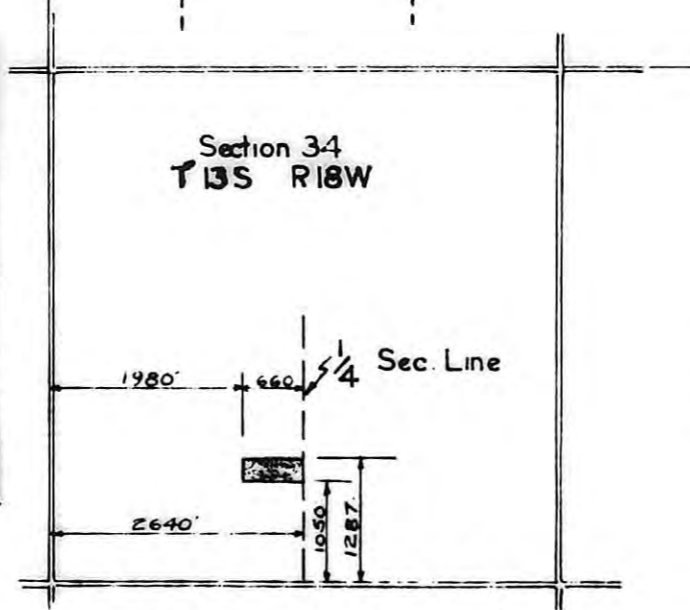


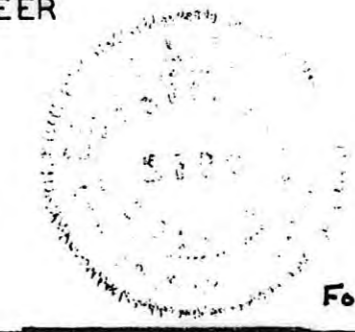
**RICHARD DECHANT'S ADDITION
TO THE
CITY OF HAYS
HAYS, KANSAS**



**LOCATION MAP
SCALE: 1" = 2000'**

I CERTIFY THIS SURVEY TO
BE TRUE AND CORRECT.
Harold A. Rothgeb
HAROLD A. ROTHGEB
LICENSED ENGINEER
APRIL 2, 1953

**HAROLD A. ROTHGEB
ARCHITECTURAL & ENGINEERING
SERVICE
1203 FORT HAYS, KANSAS**



STATE OF KANSAS }
ELLIS COUNTY } SS
This instrument was filed for record
3:30 AUG 13 1953
of clock P. recorded in
3 of Plat Page 23
Register of Deeds

For Dedi See Book 123 064 page 26

THIS IS A DIRECT PHOTOGRAPHIC REPRODUCTION OF THE OFFICIAL INSTRUMENT (RECORDED PLAT).
THIS REPRODUCTION WAS MADE BY BUCHER & WILLIS, CONSULTING ENGINEERS, PLANNERS &
ARCHITECTS IN JUNE 1979