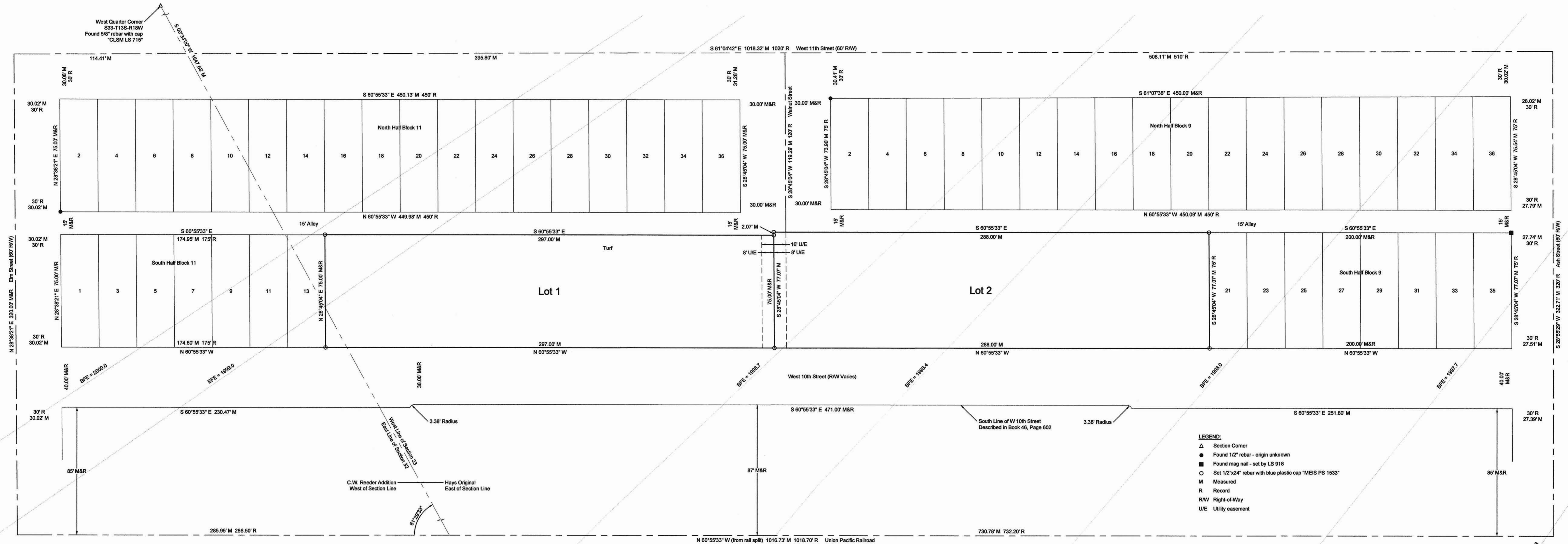


Final Plat of DEPOT ADDITION

being a Replat of a portion of Block 9, Original Town of Hays City now the City of Hays,
and a portion of Fractional Block 11, Original Town of Hays City now the City of Hays,
and a portion of Fractional Block 11, C.W. Reeder's Addition to the City of Hays, Ellis County, Kansas



SURVEY NOTES:
 1. All bearings shown are grid, Kansas State Plane North Zone NAD83 (2011)
 2. The entire surveyed property is located in Zone AE special flood hazard area as shown on FIRRM Panel No. 20051C0427C, effective date June 15, 2022. Base flood elevations are shown on this survey.
 3. Project benchmark: North cap bolt on West side of fire hydrant located at Southeast corner of intersection of West 10th Street and Elm Street. Elevation 1997.58 NAVD88.
 4. In accordance with KSA 12-512b, all rights, obligations, reservations, easements, or interests not shown on this plat shall be vacated as to use and as to title, upon filing or recording of this plat.

STREET AND EASEMENTS:
 Easements are hereby dedicated for public use, as utility easement right-of-way, which are shown as lying between the dashed lines in widths indicated and as set forth on this plat, and said utility easements may be employed for the purpose of installing, repairing and maintaining gas lines, electric lines, telephone lines, and all other forms and types of public utilities, now or hereafter used, by the public over, under and along the strips marked "Utility Easement" or "U/E".

LEGAL DESCRIPTION:
 Lots One (1), Three (3), Five (5), Seven (7), Nine (9), Eleven (11), Thirteen (13), Fifteen (15), Seventeen (17) and Nineteen (19), Block Nine (9), Original Town of Hays City, now the City of Hays, Ellis County, Kansas

AND
 Lots Fifteen (15), Seventeen (17), Nineteen (19), Twenty-one (21), Twenty-three (23), Twenty-five (25), Twenty-seven (27), Twenty-nine (29), Thirty-one (31), Thirty-three (33) and Thirty-five (35), Fractional Block Eleven (11), Original Town of Hays City, now the City of Hays, Ellis County, Kansas

AND
 Lot Fifteen (15), Fractional Block Eleven (11), C.W. Reeder's Addition to the City of Hays, Ellis County, Kansas

The vacated Walnut Street lying between the South Half of Block Nine (9) and the South Half of Fractional Block Eleven (11), Original Town of Hays City, now the City of Hays, Ellis County, Kansas

OWNER'S CERTIFICATE:
 Know all men by these presents, that we, the undersigned property owners of the land above described have caused the same to be surveyed and platted into Lots and Easements, the same to be known as "Depot Addition", to the City of Hays, Ellis County, Kansas. The utility easements as indicated on the accompanying plat are hereby granted to the public for the purpose of constructing, operating, maintaining and repairing all public utilities.

City of Hays, Kansas
 Shaun Musil, Mayor
 August 15, 2024 Date

NOTARY CERTIFICATE:
 State of Kansas, County of Ellis, ss:
 Be it remembered that on this 15th day of August, 2024, before me, a Notary Public in and for said County and State, came Shaun Musil, Mayor of the City of Hays, Kansas, to me personally known to be the same person who executed the foregoing instrument of writing and duly acknowledged the execution of same. In testimony whereof, I have hereunto set my hand and affixed my notarial seal, the day and year above written.

Andrea Windholz, Notary Public
 My Commission Expires: 10-12-2027

APPROVALS:
 This plat of Depot Addition has been submitted to and approved by the Hays Area Planning Commission this 17th day of June, 2024.
 Matthew Wheeler, Chairperson
 Joseph Boeckner, Secretary

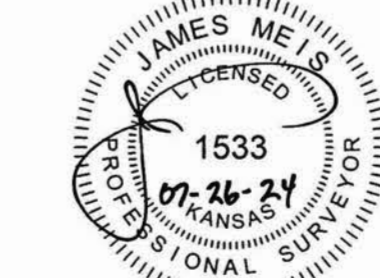
The dedications shown on this plat are accepted by the City Commission of the City of Hays, Kansas, this 25 day of July, 2024.
 Shaun Musil, Mayor

ATTEST:
 Brenda Kitchen, Brenda Kitchen, City Clerk
 Donald Hoffman, Attorney for the City of Hays

TRANSFER:
 Entered on transfer record this 22 day of August, 2024.
 Bobbi Dreiling, County Clerk

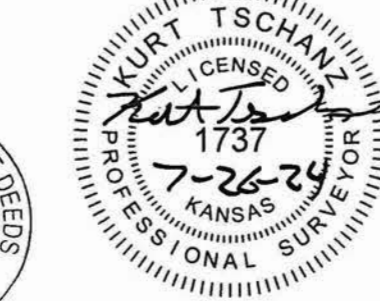


SURVEYOR'S CERTIFICATE:
 I, James Meis, Professional Surveyor #1533 in the State of Kansas, certify that the survey shown on this plat was made by me or under my direct supervision. This plat is true and correct to the best of my knowledge and belief.



James Meis, PS 1533

REVIEW SURVEYOR'S CERTIFICATE:
 State of Kansas, County of Ellis, ss:
 I hereby certify that the review of this plat was found to be in compliance with the requirements of K.S.A. 58-2005.



Kurt Tschanz, PS 1737

RECORDED:
 State of Kansas, County of Ellis, ss:
 This is to certify that this instrument was filed for record in the Register of Deeds Office on the 26 day of August, 2024 in Book 2, Page 507.
 Rebecca Herzog, Register of Deeds
 Resolution # 2024-017, filed for record in Book 1046, Page 768
 Plat & Dedication documents filed for record in Book 1046, Page 764



Lot No.	Square Feet	Acres
1	22,275	0.511
2	22,197	0.510

