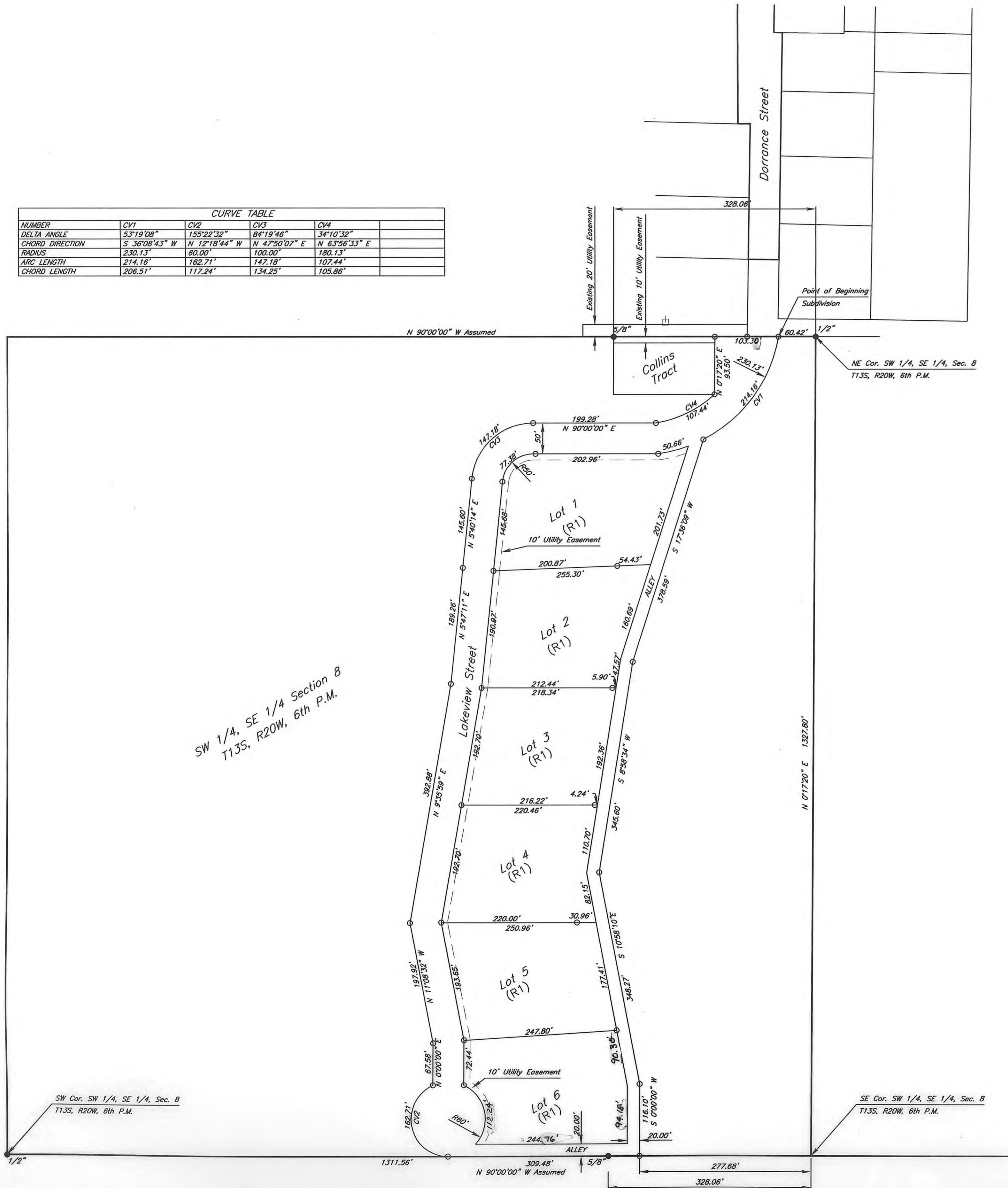


CURVE TABLE				
NUMBER	CV1	CV2	CV3	CV4
DELTA ANGLE	53°19'08"	155°22'32"	84°19'46"	34°10'32"
CHORD DIRECTION	S 36°08'43" W	N 12°18'44" W	N 47°50'07" E	N 63°56'33" E
RADIUS	230.13'	60.00'	100.00'	180.13'
ARC LENGTH	214.16'	182.71'	147.18'	107.44'
CHORD LENGTH	206.51'	117.24'	134.25'	105.86'



SW 1/4, SE 1/4 Section 8
T13S, R20W, 6th P.M.

LEGAL DESCRIPTION (SUBDIVISION)

A tract of land in the SW 1/4, SE 1/4, Section 8, T13S, R20W, 6th Principal Meridian, Ellis County, Kansas. Commencing at the NE Corner SW 1/4, SE 1/4, Section 8, T13S, R20W 6th Principal Meridian; thence North 90 degrees 0 minutes 0 seconds West 60.42 feet to the point of beginning; thence along a curve to the right having a radius of 230.13 feet, central angle of 53 degrees 19 minutes 08 seconds, chord length of 206.51 feet, chord azimuth of South 36 degrees 08 minutes 43 seconds West and arc length of 214.16 feet to a point; thence South 17 degrees 36 minutes 09 seconds West 378.59 feet to a point; thence South 8 degrees 58 minutes 34 seconds West 345.60 feet to a point; thence South 10 degrees 58 minutes 10 seconds East 348.27 feet to a point; thence South 0 degrees 0 minutes 0 seconds West 116.10 feet to the South side of said SW 1/4 of SE 1/4 of Section 8 to a point; thence North 90 degrees 0 minutes 0 seconds West 309.48 feet along the South side of said SW 1/4 of SE 1/4 of Section 8 to a point; thence along a curve to the right having a radius of 60.00 feet, central angle of 155 degrees 22 minutes 32 seconds, chord length of 117.24 feet, chord azimuth of North 12 degrees 18 minutes 44 seconds West and arc length of 162.71 feet to a point; thence North 0 degrees 0 minutes 0 seconds East 67.58 feet to a point; thence North 11 degrees 8 minutes 32 seconds West 197.92 feet to a point; thence North 9 degrees 35 minutes 59 seconds East 392.88 feet to a point; thence North 5 degrees 47 minutes 11 seconds East 189.26 feet to a point; thence North 5 degrees 40 minutes 14 seconds East 145.60 feet to a point; thence along a curve to the right having a radius of 100.00 feet, central angle of 84 degrees 19 minutes 46 seconds, chord length of 134.25 feet, chord azimuth of North 47 degrees 50 minutes 7 seconds East and arc length of 147.18 feet to a point; thence North 90 degrees 0 minutes 0 seconds East 199.28 feet to a point; thence along a curve to the left having a radius of 180.13 feet, central angle of 34 degrees 10 minutes 32 seconds, chord length of 105.86 feet, chord azimuth North 63 degrees 56 minutes 33 seconds East, and arc length of 107.44 feet to a point; thence North 0 degrees 17 minutes 20 seconds East 93.50 feet to a point on the North side of said SW 1/4 of SE 1/4 of Section 8; thence North 90 degrees 0 minutes 0 seconds East 103.30 feet to the point of beginning. This Tract contains 8.96 acres more or less.

APPROVAL CERTIFICATE:

This plat of Downing Addition has been submitted to and approved by the City of Ellis Planning Commission this 14th day of August, 2002.

Rohit Neuman
Chairman
Mark J. Wiley
Secretary

I hereby certify that this plat was submitted to the Governing Body of the City of Ellis, Kansas and such Governing Body duly approved and accepted the dedications shown on this plat on 14th day of August, A.D. 2002.

(SEAL) *David R. McDermott*
Mayor
Mark J. Wiley
City Clerk

The foregoing plat is hereby approved by the City Attorney of Ellis, Kansas.

Kim Johnson
City Attorney August 19, 2002

SURVEYOR'S CERTIFICATE:

I, a licensed professional engineer and licensed land surveyor, do hereby certify this plat to be true and correct to the best of my knowledge and belief.

Signed this 16 day of August A.D. 2002

Dale K. Owings
Dale K. Owings P.E.



I do hereby certify that I have reviewed the above plat of survey as provided by K.S.A. 58-2005 and I find it to meet all requirements of this act.

9-3-02
Date

Doug Carlson
Doug Carlson
Land Surveyor



OWNERS' CERTIFICATE:

This is to certify that the undersigned is the owner of the land described in the plat, and that he have caused the same to be surveyed and subdivided as indicated thereon for the uses and purposes therein set forth, and does hereby acknowledge and adopt the same under the style and title thereon indicated.

All street Rights-of-Way and alley as shown on this plat are hereby dedicated to the public. An easement or license to the public to locate, construct, and maintain or authorize the location, construction, and maintenance of poles, wires, conduits, water, gas, and sewer pipes or required drainage channels or structures upon the area marked for easements on this plat is hereby granted.

Given under my hand at Hays, KS, Kansas this 4th day of September, A.D. 2002.

Mike Downing
Mike Downing
Chance Investments Inc.
By: Mike Downing

NOTARY CERTIFICATE:

I, a Notary Public in and for Ellis County, in the State of Kansas do hereby certify that Mike Downing, personally known to me to be the same person whose name is subscribed to the foregoing instrument as such owners, appeared before me this day in person and acknowledged that they signed the plat as his own free and voluntary act for the uses and purposes herein set forth.

Given under my hand and Notarial Seal this 4th day of September, A.D. 2002.



Cynthia A. Weigel
Cynthia A. Weigel
Notary Public

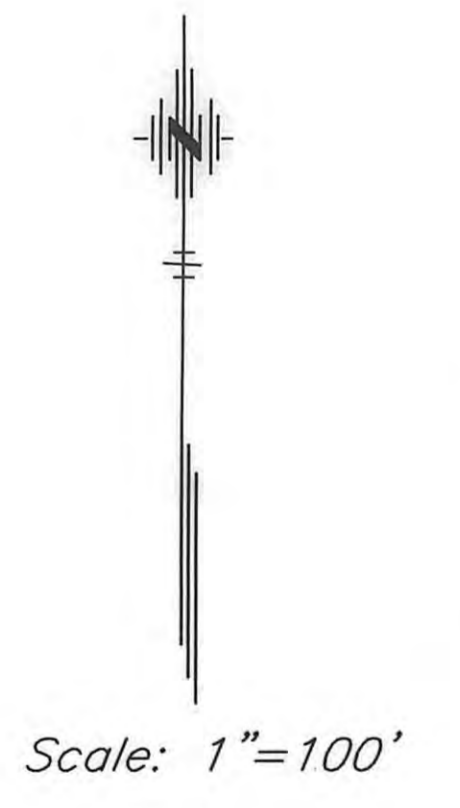
My commission expires 2-8-04.

STATE OF KANSAS } ss.
ELLIS COUNTY }
This instrument was filed for record in my office at 8:00 o'clock A.M. on this 09 day of September 2002 and is duly recorded in Book of 391

Rebecca Jensen
Rebecca Jensen
Register of Deeds



Plat + Rebar: BK: 539 PG: 131



LEGEND

- Set 5/8" Dia. Rebar w/LS 42 Cap in Concrete—○
- Found 1/2" Rebar—●
- Found 5/8" Rebar w/LS 42 Cap—●
- Zoning Designation—(R1)

PENCO ENGINEERING, P.A.
P.O. BOX 392
PLAINVILLE, KS 67663
(785) 434-4611

PLAT OF
DOWNING ADDITION
TO THE
CITY OF ELLIS, KANSAS