



L C Loreditsch, Licensed Professional Engineer, do hereby certify that this is a true and correct Plat, to the best of my knowledge, of Joe T. Pfeifer's First Addition and Ray F. Pfeifer's First Addition, to the City, of Victoria Kansas.

C.J. Loreditsch PE.

Plat approved this 3<sup>rd</sup> day of June 1963, by the Governing Body of The City, of Victoria Kansas.

City Clerk.

JOE T. & RAY F. PFEIFER'S

FIRST ADDITIONS

TO

VICTORIA

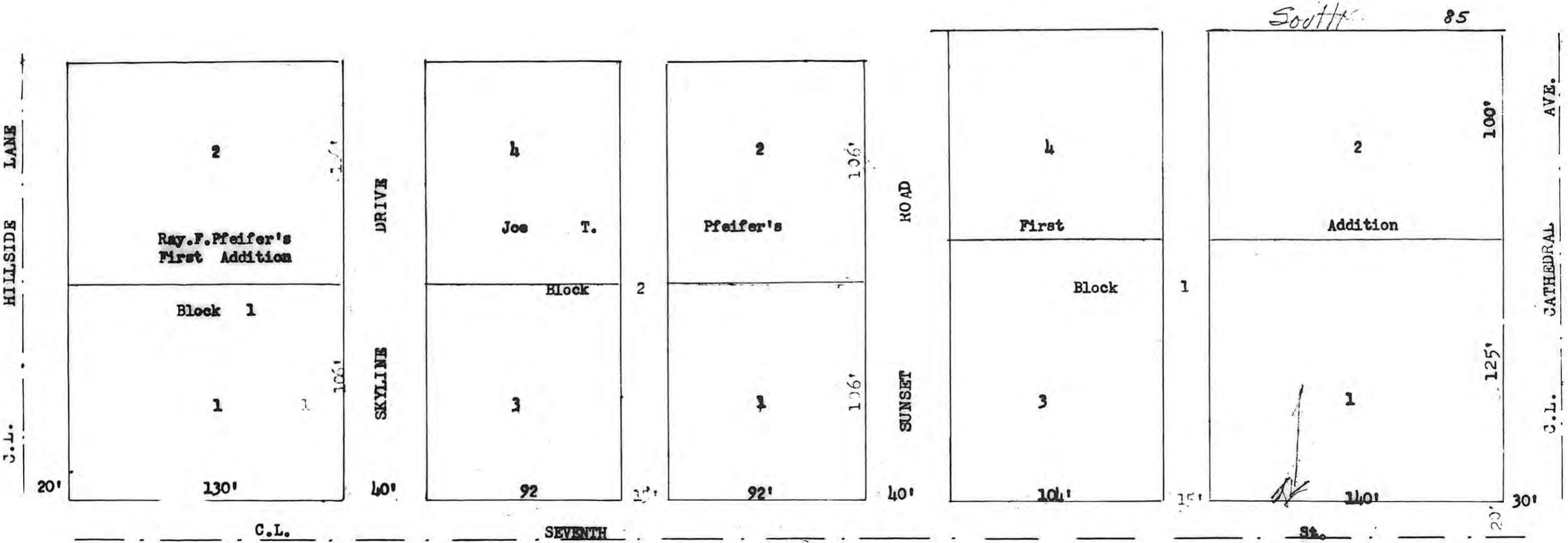
STATE OF KANSAS  
ELLIS COUNTY  
This instrument was filed for record

JUN 12 1963

Dedication 208-226  
Resolution 208-230

2:00 o'clock P.M. recorded in  
of Plat page 83  
Fees \$3.00  
Stamp 30  
3.80  
Register of Deeds

Joe T Pfeifer's



L C Loreditsch, Licensed Professional Engineer, do hereby certify that this is a true and correct Plat, to the best of my knowledge, of Joe T. Pfeifer's First Addition and Ray F. Pfeifer's First Addition, to the City, of Victoria Kansas.

C.J. Loreditsch PE.

Plat approved this 3<sup>rd</sup> day of June 1963, by the Governing Body of The City, of Victoria Kansas.

City Clerk.

JOE T. & RAY F. PFEIFER'S

PLAT ADDITIONS

TO

VICTORIA

KANSAS

STATE OF KANSAS  
ELLIS COUNTY  
Instrument was filed for record  
JUN 12 1963  
8:00 o'clock A.M. recorded in  
of Plat page 83  
Fees \$3.00  
Stamp 30  
3.80  
Register of Deeds

Dedication 208-231  
Resolution 208-235

Ray F Pfeifer

THIS IS A DIRECT PHOTOGRAPHIC REPRODUCTION OF THE OFFICIAL INSTRUMENT (RECORDED PLAT).  
THIS REPRODUCTION WAS MADE BY BUCHER & WILLIS, CONSULTING ENGINEERS, PLANNERS & ARCHITECTS IN JUNE 1979