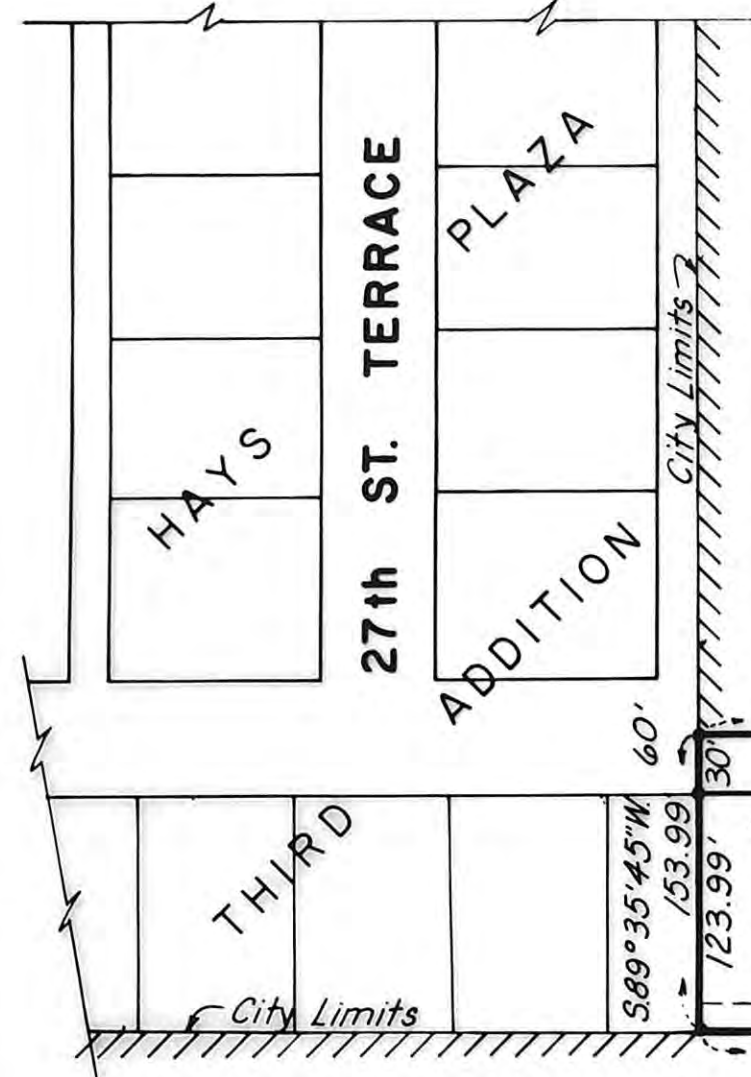
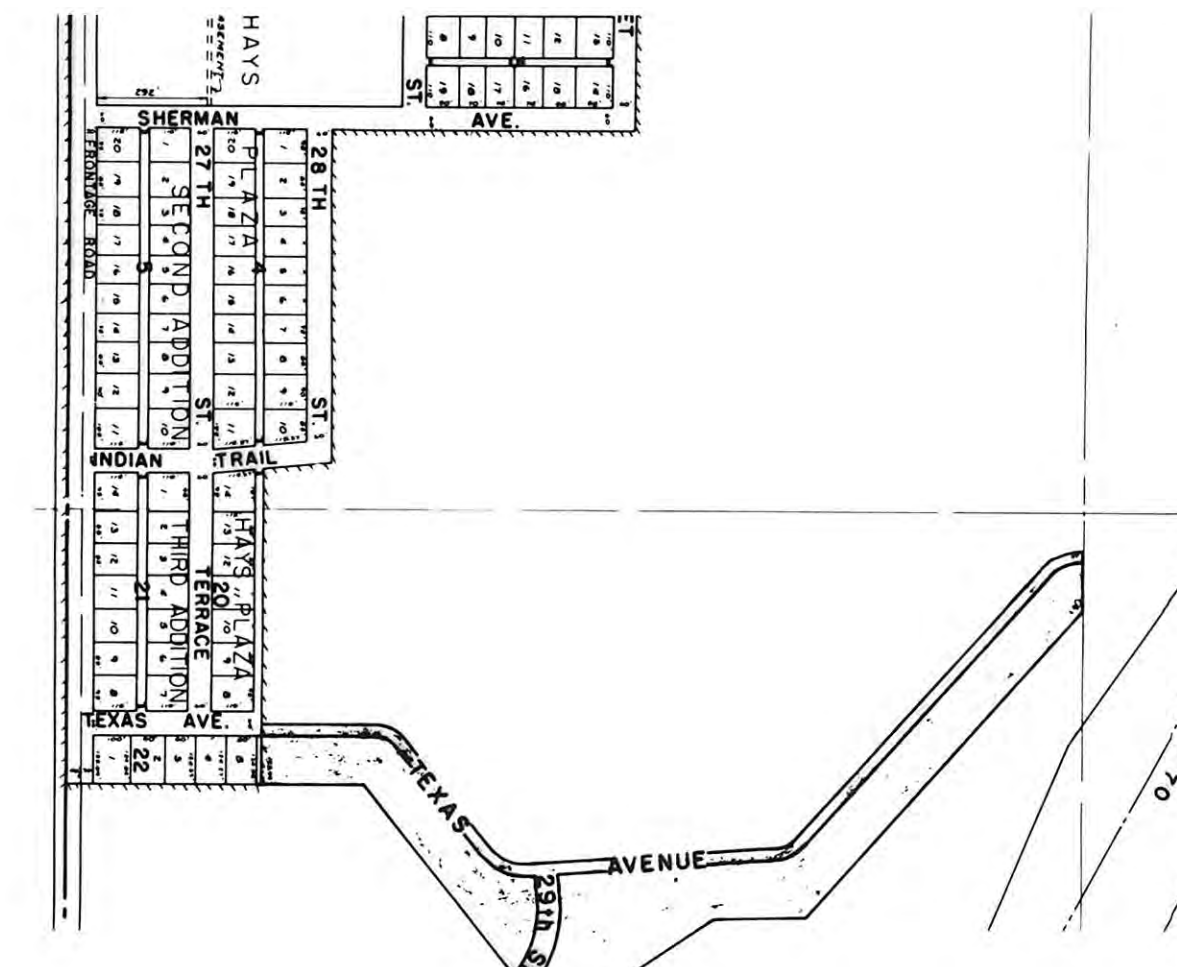
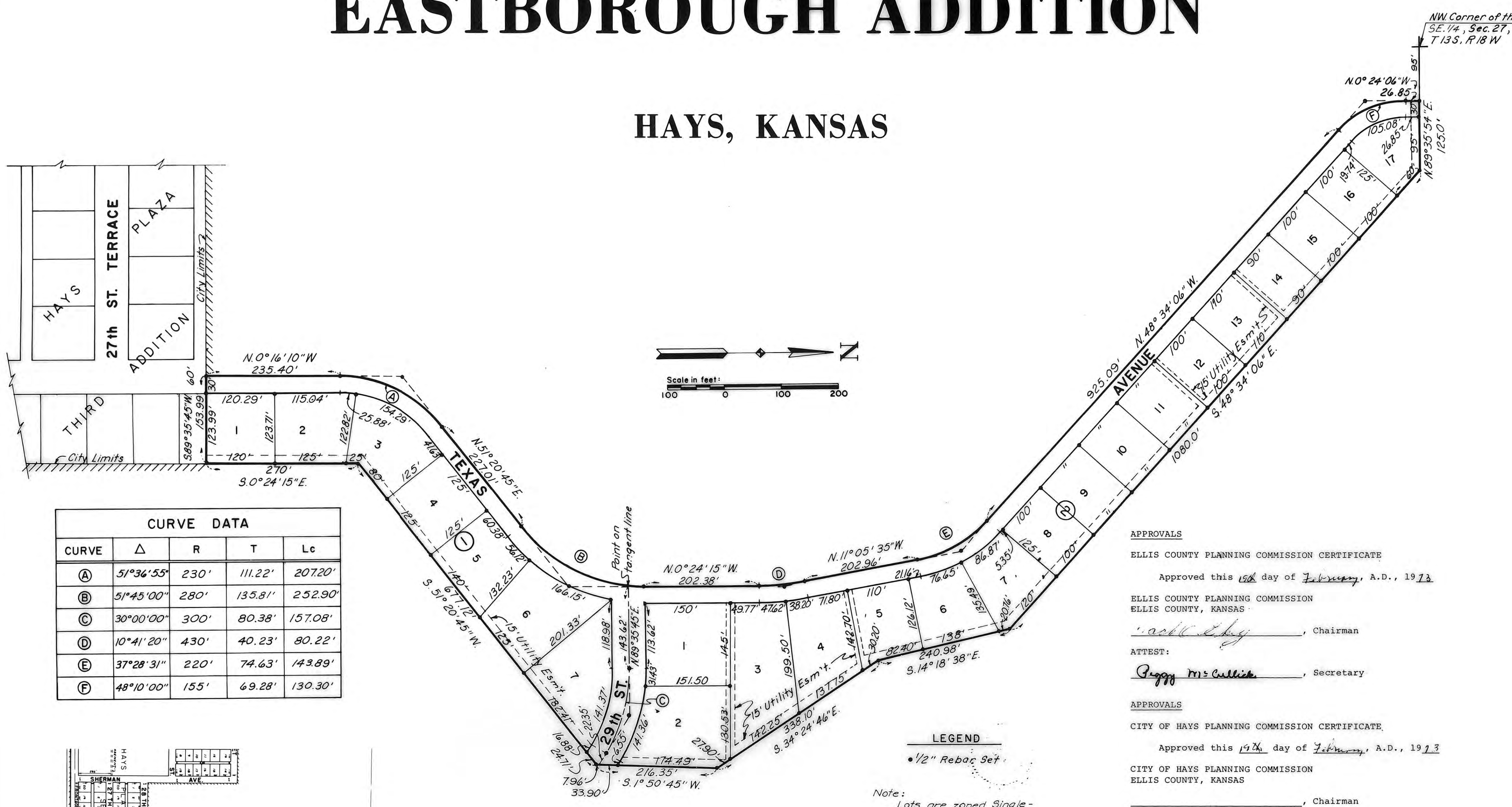
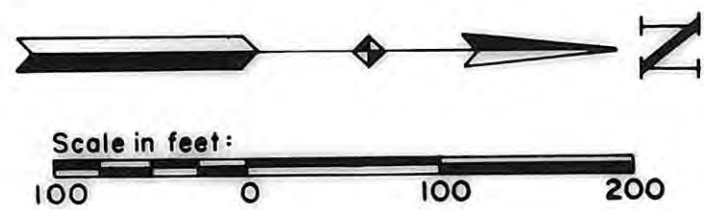


EASTBOROUGH ADDITION

HAYS, KANSAS



CURVE DATA				
CURVE	Δ	R	T	Lc
A	51°36'55"	230'	111.22'	207.20'
B	51°45'00"	280'	135.81'	252.90'
C	30°00'00"	300'	80.38'	157.08'
D	10°41'20"	430'	40.23'	80.22'
E	37°28'31"	220'	74.63'	143.89'
F	48°10'00"	155'	69.28'	130.30'



LOCATION MAP

THIS IS A DIRECT PHOTOGRAPHIC REPRODUCTION OF THE OFFICIAL INSTRUMENT (RECORDED PLAT).
THIS REPRODUCTION WAS MADE BY BUCHER & WILLIS CONSULTING ENGINEERS, PLANNERS & ARCHITECTS IN AUGUST, 1979.

COUNTY CLERK CERTIFICATE
I hereby certify that this plat was first submitted to the Ellis County Planning Commission and by the Ellis County Planning Commission to the Governing Body of Ellis County, Kansas, and by such Governing Body duly approved on 26 February, 1973.
Given under my hand and seal at Hays, Kansas 26 day of February, A.D., 1973.
Richard Schmidt
County Clerk

APPROVALS
ELLIS COUNTY PLANNING COMMISSION CERTIFICATE
Approved this 19th day of February, A.D., 1973.
ELLIS COUNTY PLANNING COMMISSION
ELLIS COUNTY, KANSAS
W. F. Felten, Chairman
ATTEST:
Peggy McCullick, Secretary
CITY OF HAYS PLANNING COMMISSION CERTIFICATE
Approved this 19th day of February, A.D., 1973.
CITY OF HAYS PLANNING COMMISSION
ELLIS COUNTY, KANSAS
_____, Chairman
ATTEST:
Peggy McCullick, Secretary

CITY CLERK CERTIFICATE
I hereby certify that this plat was first submitted to the City Planning Commission and by the City Planning Commission to the Governing Body of the City of Hays, Kansas, and by such Governing Body duly approved on March 8, 1973.
Given under my hand and seal at Hays, Kansas, this 8th day of March, A.D., 1973.
Arnold Schulten
City Clerk

LEGAL DESCRIPTION:
A tract of land in the Southeast Quarter of Section 27, Township 13 South, Range 18 West of the Sixth Principal Meridian, Ellis County, Kansas, more particularly described as follows:
Beginning at a point on the North line of the Southeast Quarter of Section 27, T13S, R18W, said point being 95.0 feet East of the Northwest corner of said Southeast Quarter; thence on an assumed bearing of N 89°35'54" E along the North line of said Southeast Quarter, a distance of 125.0 feet; thence S 48°34'06" E, a distance of 1080.0 feet; thence S14°18'38" E, a distance of 240.98 feet; thence S 34°24'46" E, a distance of 338.10 feet; thence S 1°50'45" W, a distance of 216.35 feet; thence S 51°20'45" W, a distance of 677.12 feet; thence S 0°24'15" E, a distance of 270 feet; thence S 89°35'45" W, a distance of 153.99 feet; thence N 0°16'10" W, a distance of 235.40 feet; thence in a Northeasterly direction on a curve to the right, having a radius of 230.0 feet, an arc distance of 207.20 feet; thence tangent to said curve N51°20'45" E, a distance of 227.01 feet; thence in a Northerly direction on a curve to the left, having a radius 280.0 feet, an arc distance of 252.90 feet; thence tangent to said curve N 0°24'15" W, a distance of 202.38 feet; thence in a Northwesterly direction on a curve to the left having a radius of 430.0 feet, an arc distance of 80.22 feet; thence tangent to said curve N 11°05'35" W, a distance of 202.96 feet; thence in a Northwesterly direction on a curve to the left having a radius of 220.0 feet, an arc distance of 143.89 feet; thence tangent to said curve N 48°34'06" W, a distance of 925.09 feet; thence in a Northerly direction on a curve to the right having a radius of 155.0 feet, an arc distance of 130.30 feet; thence tangent to said curve N 0°24'06" W, a distance of 26.85 feet to the point of beginning. Said tract contains 10.33 acres, more or less.

OWNER'S CERTIFICATE
This is to certify that the undersigned are the owners of the land described in the plat, and that they have caused the same to be surveyed and subdivided as indicated thereon, for the uses and purposes therein set forth, and do hereby acknowledge and adopt the same under the style and title thereon indicated.

All street rights-of-way as shown on this plat are hereby dedicated to the public. An easement or license to the public to locate, construct and maintain or authorize the location, construction and maintenance of poles, wires, conduits, water, gas and sewer pipes or required drainage channels or structures upon the area marked for easements on this plat is hereby granted.

Given under my hand at Hays, Kansas, this 20th day of January, A.D., 1973.
Darrell G. Seibel, *Loretta Haney*
Darrell G. Seibel, Loretta Haney
Marilynn E. Seibel, *William F. Aibel*
Marilynn E. Seibel, William F. Aibel
By *W. F. Aibel*, President
P. F. Felten
P. F. Felten
Mabel Felten
Mabel Felten
ATTEST:
Mabel Felten
Secretary

NOTARY CERTIFICATE
I, a Notary Public in and for Ellis County, in the State of Kansas, do hereby certify that Darrell G. Seibel, Marilyn E. Seibel, P. F. Felten, Mabel Felten, Loretta Haney and William F. Aibel, President of the Hays Plaza, Incorporated, and Van Hartman, Secretary of Hays Plaza, Incorporated, personally known to me to be the same persons whose names are subscribed to the foregoing instrument as such owners, appeared before me this day in person and acknowledged that they signed and delivered the plat as their own free and voluntary act for the uses and purposes therein set forth.

Given under my hand and Notarial Seal this 21st day of Jan, A.D., 1973.
Grace White
Notary Public
My Commission expires June 3, 1974

SURVEYOR'S CERTIFICATE
I, Raymond E. Lamfers, a licensed professional engineer, do hereby certify this plat to be true and correct to the best of my knowledge.
Signed this 29th day of January, 1973.
Raymond E. Lamfers
Engineer

STATE OF KANSAS }
ELLIS COUNTY }
This instrument was filed for record
APR 6 1973
4:30 o'clock P.M. recorded in
24 of book page 3
Hays
Fees: 1.00
Register of Deeds

PREPARED BY
BUCHER & WILLIS
CONSULTING ENGINEERS, PLANNERS & ARCHITECTS