

EKEY'S SECOND ADDITION

TO THE CITY OF HAYS, KANSAS

THIS IS A DIRECT PHOTOGRAPHIC REPRODUCTION OF THE OFFICIAL INSTRUMENT (RECORDED PLAT).

THIS REPRODUCTION WAS MADE BY BUCHER & WILLIS CONSULTING ENGINEERS, PLANNERS & ARCHITECTS IN JUNE 1979

STATE OF KANSAS
ELLIS COUNTY
This instrument was filed for record

DEC 12 1959

Book and Plats 9:30
9:30
11:00
1:00
4:20
#7.20

COUNTY ENGINEER'S CERTIFICATE

I, THE UNDERSIGNED, C. J. LOREDITSCH, ELLIS COUNTY ENGINEER AND A LICENSED PROFESSIONAL ENGINEER, DO HEREBY APPOINT JOHN W. SMITH DEPUTY COUNTY ENGINEER FOR THE PURPOSE OF SURVEYING AND PLATTING EKEY'S SECOND ADDITION TO THE CITY OF HAYS, KANSAS.

SIGNED THIS 10th DAY OF December, 1959

C. J. LOREDITSCH
CO. ENGINEER
ELLIS COUNTY

ENGINEER'S CERTIFICATE

I, THE UNDERSIGNED, JOHN W. SMITH, A LICENSED PROFESSIONAL ENGINEER, DO HEREBY CERTIFY THIS PLAT TO BE TRUE AND CORRECT TO THE BEST OF MY KNOWLEDGE.

SIGNED THIS 10th DAY OF December, 1959

JOHN W. SMITH, P.E.

I HEREBY CERTIFY THAT THIS PLAT WAS FIRST SUBMITTED TO THE CITY PLANNING COMMISSION AND BY THE CITY PLANNING COMMISSION TO THE GOVERNING BODY OF THE CITY OF HAYS, KANSAS, AND BY SUCH GOVERNING BODY DULY APPROVED ON December 10, 1959.

DOROTHY SODERBLOM
CITY CLERK

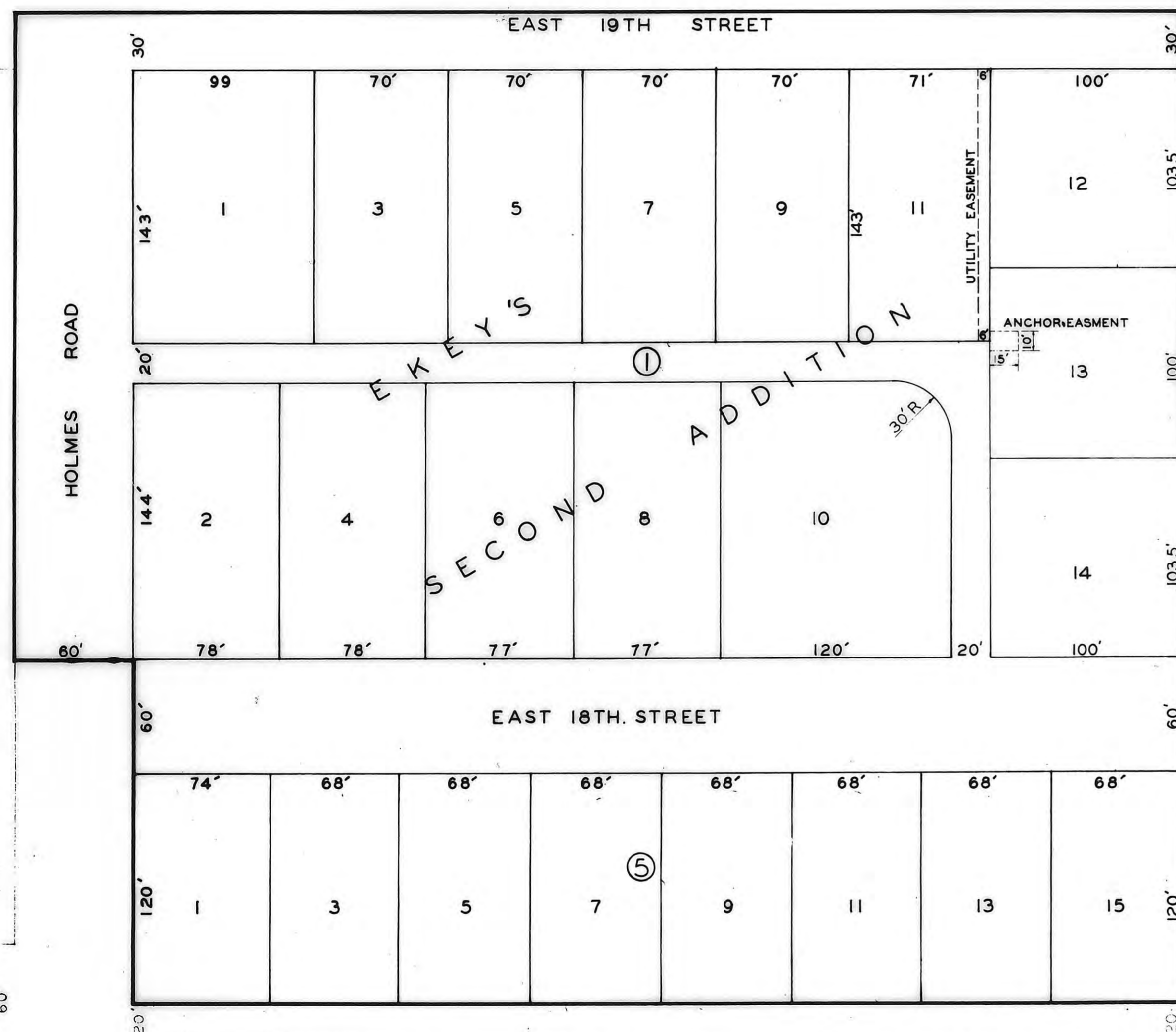
LEGAL DESCRIPTION

A TRACT OF LAND IN THE S.W. 1/4 OF SECTION 34, T13S, R18W OF THE 6TH RM. ELLIS COUNTY, KANSAS, DESCRIBED AS FOLLOWS:

BEGINNING AT A POINT WHICH IS 1950 FEET EAST AND 803 FEET NORTH OF THE S.W. CORNER OF SECTION 34, SAID POINT BEING THE N.W. CORNER OF THE INTERSECTION OF THE ALLEY IN BLOCK 5, EKEY'S FIRST ADDITION TO THE CITY OF HAYS, KANSAS, AND MARSHALL ROAD, THENCE NORTH ALONG THE WEST PROPERTY LINE OF MARSHALL ROAD A DISTANCE OF 517 FEET; THENCE WEST AT 90 DEGREES A DISTANCE OF 610 FEET; THENCE SOUTH AT 90 DEGREES A DISTANCE OF 337 FEET; THENCE EAST AT 90 DEGREES A DISTANCE OF 60 FEET; THENCE SOUTH AT 90 DEGREES A DISTANCE OF 180 FEET; THENCE EAST AT 90 DEGREES A DISTANCE OF 550 FEET TO THE POINT OF BEGINNING. (THE SOUTH 180 FEET OF THE ABOVE DESCRIBED TRACT IS A PART OF EKEY'S FIRST ADDITION)

NOTE:

BLOCK 5 AND EAST 18TH STREET OF EKEY'S SECOND ADDITION ARE A REPLAT OF THE NORTH HALF OF BLOCK 5 AND EAST 18TH STREET OF EKEY'S FIRST ADDITION.



SCALE: 1" = 50'

DRAWN BY GEMG		JOHN W. SMITH CONSULTING ENGINEER AND ASSOCIATES	
CHECKED BY JWS		HAYS KANSAS	
DATE SEPT. 59	JOB NO. 299 - 59		
EKEY'S SECOND ADDITION		SHEET 1 of 1	
HAYS		KANSAS	