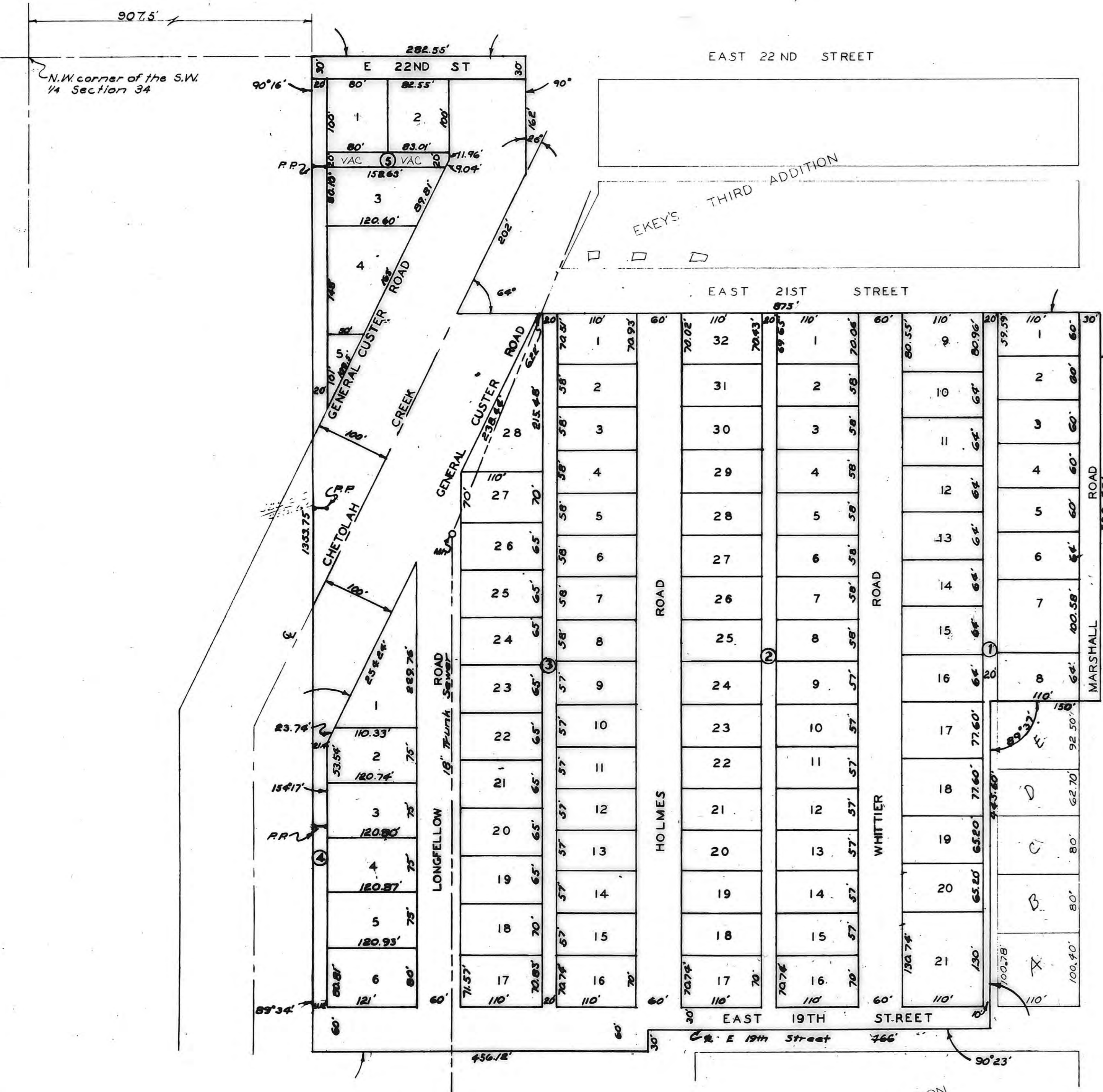


# EKEY'S FOURTH ADDITION

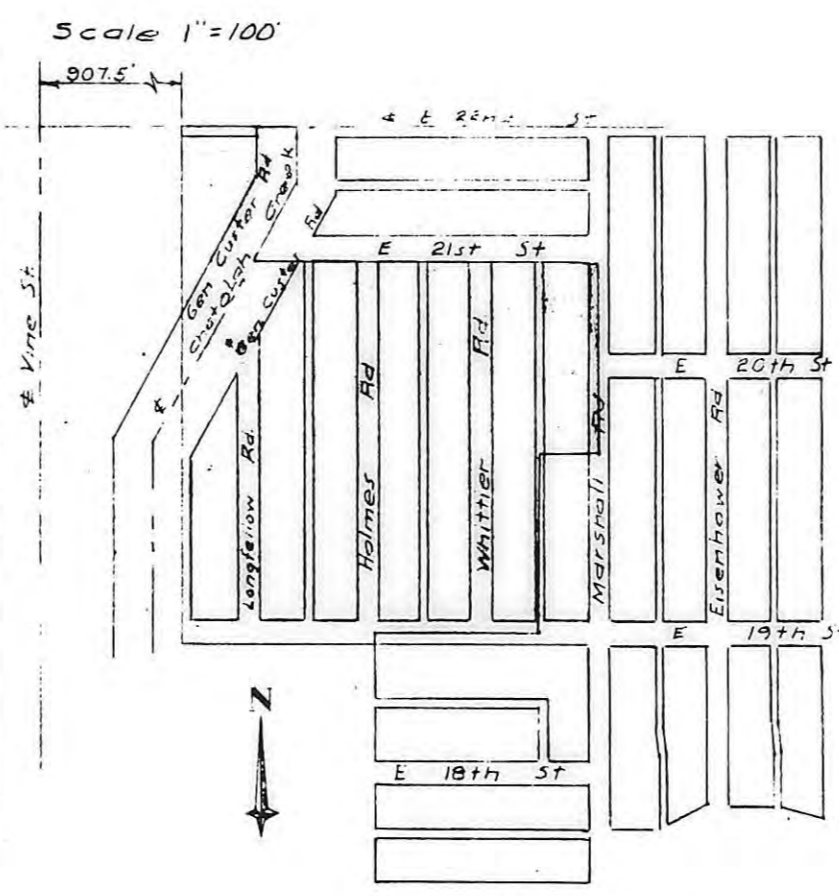
TO THE CITY OF HAYS, KANSAS



### LEGAL DESCRIPTION

A TRACT OF LAND IN THE SOUTHWEST ONE-QUARTER OF SECTION 34, TOWNSHIP 13 SOUTH, RANGE 18 WEST OF THE 6TH PRINCIPAL MERIDIAN, ELLIS COUNTY, KANSAS AND MORE FULLY DESCRIBED AS FOLLOWS:

BEGINNING AT A POINT 907.5 FEET EAST OF THE NORTHWEST CORNER OF THE SOUTHWEST QUARTER (SW<sup>4</sup>) OF SAID SECTION THIRTY-FOUR (34); THENCE SOUTH, PARALLEL TO THE WEST LINE OF SAID SECTION, 1353.75 FEET; THENCE EAST AT AN ANGLE OF 89 DEGREES 34 MINUTES, 456.12 FEET; THENCE NORTH, AT 90 DEGREES, 30 FEET; THENCE EAST, AT 90 DEGREES, 466 FEET; THENCE NORTH, AT 90 DEGREES 23 MINUTES, 445.6 FEET; THENCE EAST, 89 DEGREES 37 MINUTES, 150 FEET, TO THE CENTER LINE OF MARSHALL ROAD; THENCE NORTH, ALONG THE CENTER LINE OF MARSHALL ROAD, 528.58 FEET; THENCE WEST, 89 DEGREES 47 MINUTES, 875 FEET; THENCE NORTHEAST, AT 64 DEGREES, 202 FEET; THENCE NORTH, AT 26 DEGREES, 162 FEET TO THE NORTH LINE OF THE SAID SOUTHWEST QUARTER; THENCE WEST, ALONG THE NORTH LINE OF SAID QUARTER SECTION, 282.55 FEET, TO THE POINT OF BEGINNING.



I HEREBY CERTIFY THAT THIS PLAT WAS FIRST SUBMITTED TO THE CITY PLANNING COMMISSION AND BY THE CITY PLANNING COMMISSION TO THE GOVERNING BODY OF THE CITY OF HAYS, KANSAS AND BY SUCH GOVERNING BODY APPROVED ON May 9, 1963.

*Dorothy Soderblom*  
DOROTHY SODERBLOM  
CITY CLERK

STATE OF KANSAS  
ELLIS COUNTY  
This instrument was filed for record

MAY 24 1963

3.30  
107.38  
Fees \$3.00  
Stamp \$2.20  
Plat and Dedication Book 207 Page 660  
Resolution Book 207 Page 663

### ENGINEER'S CERTIFICATE

I, JOHN W SMITH, A LICENSED PROFESSIONAL ENGINEER DO HEREBY CERTIFY THIS PLAT TO BE TRUE AND CORRECT TO THE BEST OF MY KNOWLEDGE.

SIGNED THIS 9 DAY OF May, 1963.

*John W. Smith*  
JOHN W. SMITH



ORDINANCE NO. 2394

AN ORDINANCE VACATING THE ALLEY SOUTH OF EAST TWENTY-SECOND STREET, FROM GENERAL CUSTER ROAD TO THE NORTH-SOUTH ALLEY WEST OF GENERAL CUSTER ROAD IN THE CITY OF HAYS, KANSAS.  
Book: 260 Pg: 92

THIS IS A DIRECT PHOTOGRAPHIC REPRODUCTION OF THE OFFICIAL INSTRUMENT (RECORDED PLAT).  
THIS REPRODUCTION WAS MADE BY BUCHER & WILLIS CONSULTING ENGINEERS, PLANNERS & ARCHITECTS IN JUNE 1979

DRAWN BY <i>DWS</i>		CHECKED BY		DATE April 23 63 - 204		JOB NO.		JOHN W. SMITH CONSULTING ENGINEER AND ASSOCIATES HAYS KANSAS	
EKEY'S FOURTH ADDITION				HAYS, KANSAS		SHEET 1 OF 1			