

EKEY'S THIRD ADDITION

TO THE CITY OF HAYS KANSAS

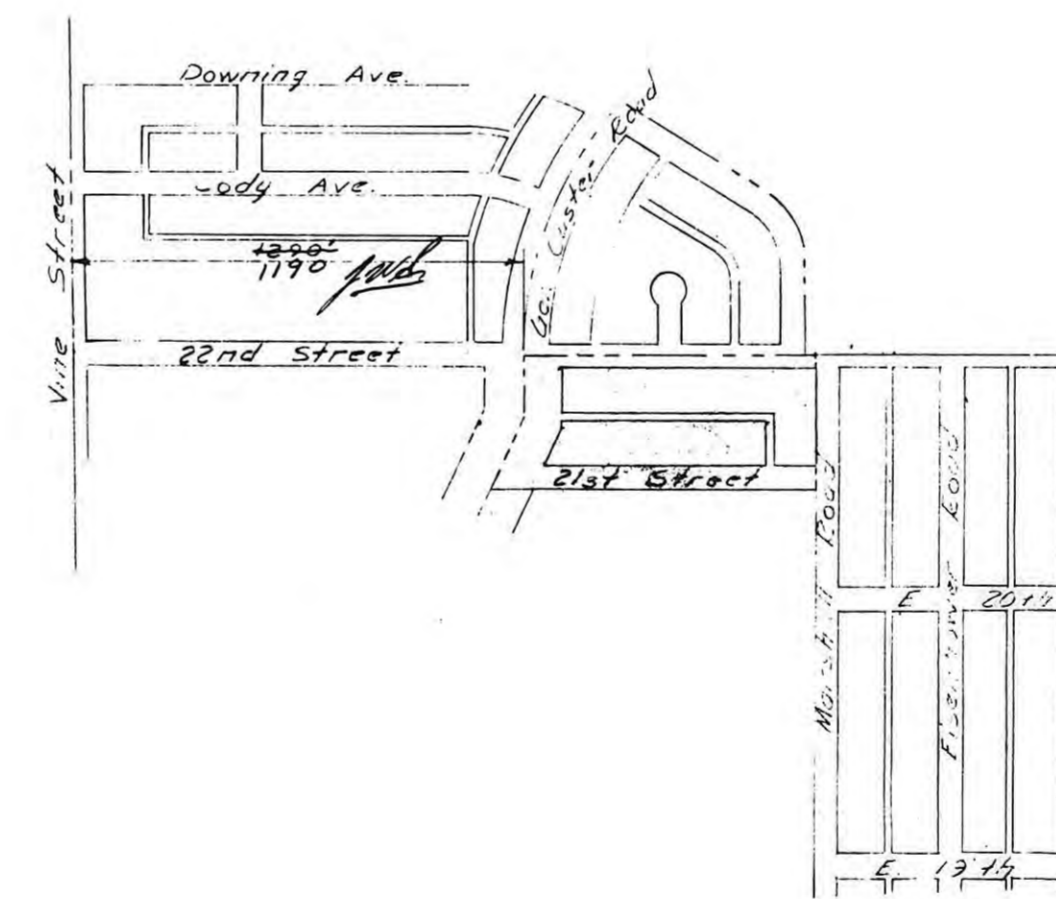
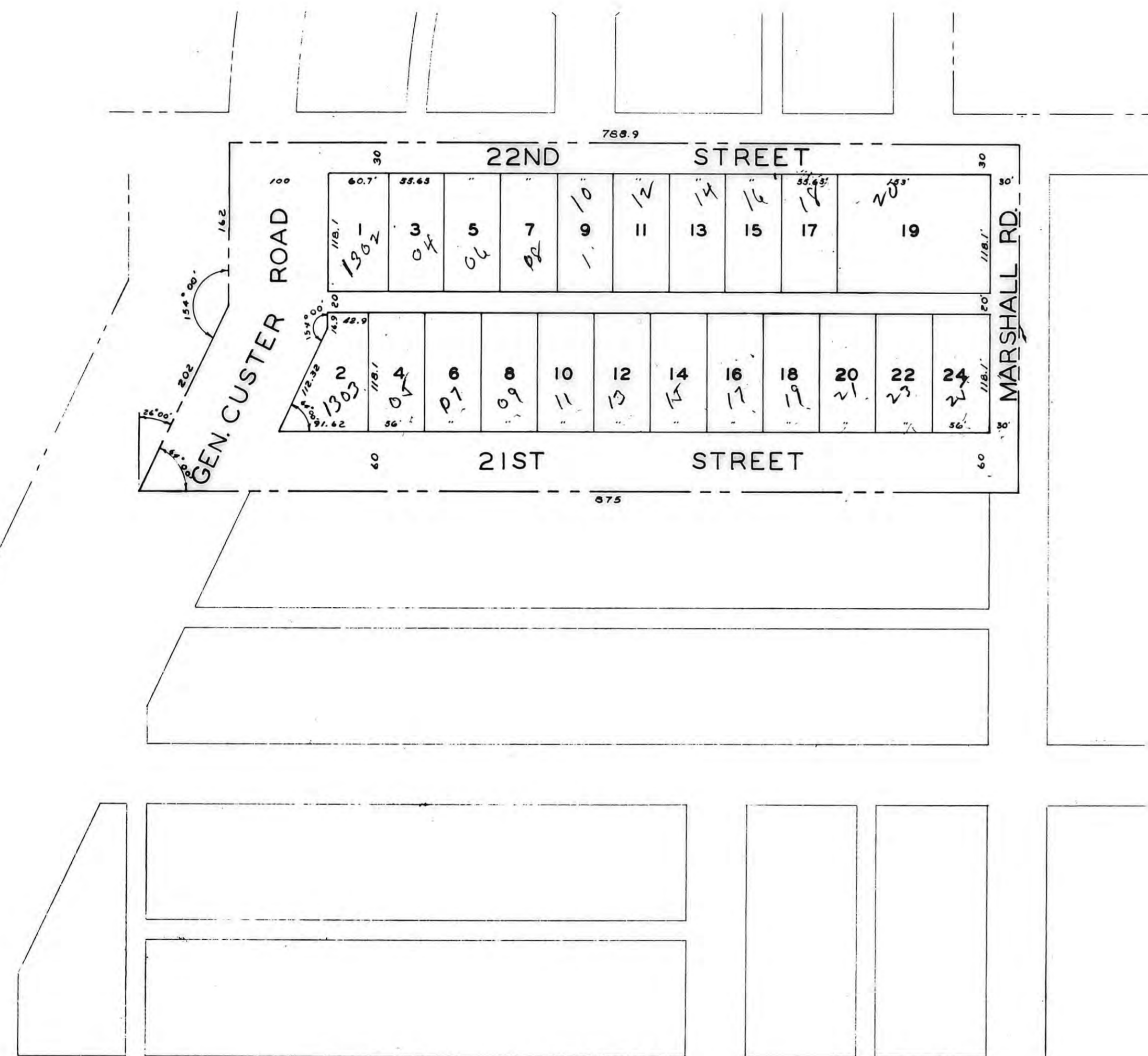
LEGAL DESCRIPTION

A tract of land in the S.W. 1/4 of Section 34, T13S, R18W, of the 6th P.M., Ellis County, Kansas, and further described as follows:

Beginning at a point on the North line of the S.W. 1/4 of Section 34, 162 feet East of the N.W. corner of the S.W. 1/4 of Section 34; thence East along the North line of the S.W. 1/4, a distance of 788.9 feet; thence South along the center line of Marshall Road, a distance of 346.2 feet; thence West and parallel to the North line of the S.W. 1/4 of Section 34, a distance of 875 feet; thence North 64°00' East, a distance of 202 feet; thence North parallel to the West line of Marshall Road, a distance of 162 feet to the point of beginning.



Scale: 1" = 100'



LOCATION MAP
Scale: 1" = 500'

STATE OF KANSAS
ELLIS COUNTY
This instrument was filed for record
NOV 7 1960
3:00
Book 2 of 1960
Page 1190
#2.20
#8.35

ENGINEERS CERTIFICATE

I THE UNDERSIGNED, JOHN W. SMITH, A LICENSED PROFESSIONAL ENGINEER, DO HEREBY CERTIFY THIS PLAT TO BE TRUE AND CORRECT TO THE BEST OF MY KNOWLEDGE.

SIGNED THIS 27 DAY OF Oct., 1960.

John W. Smith
JOHN W. SMITH, P.E.



I HEREBY CERTIFY THAT THIS PLAT WAS FIRST SUBMITTED TO THE CITY PLANNING COMMISSION AND BY THE CITY PLANNING COMMISSION TO THE GOVERNING BODY OF THE CITY OF HAYS, KANSAS AND BY SUCH GOVERNING BODY APPROVED ON October 27, 1960.

Dorothy Soderblom
DOROTHY SODERBLOM
CITY CLERK



THIS IS A DIRECT PHOTOGRAPHIC REPRODUCTION OF THE OFFICIAL INSTRUMENT (RECORDED PLAT).

THIS REPRODUCTION WAS MADE BY BUCHER & WILLIS, CONSULTING ENGINEERS, PLANNERS & ARCHITECTS IN JUNE 1979

DRAWN BY		JOHN W. SMITH	
CHECKED BY		CONSULTING ENGINEER AND ASSOCIATES	
DATE	JOB NO.	HAYS	KANSAS
Sept. 1960	60-228		
EKEY'S THIRD ADDITION			SHEET 1 of 1
HAYS KANSAS			