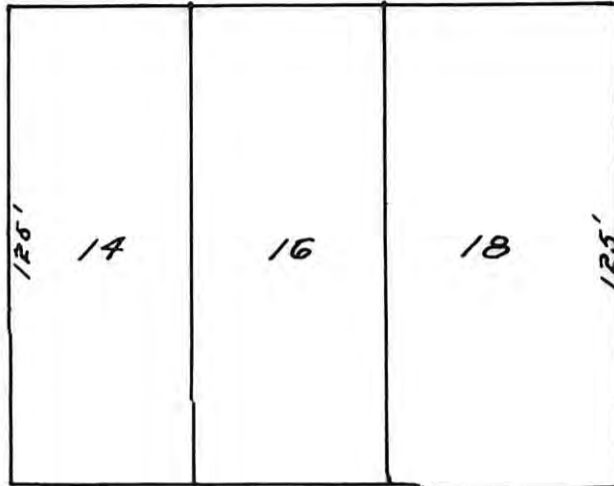


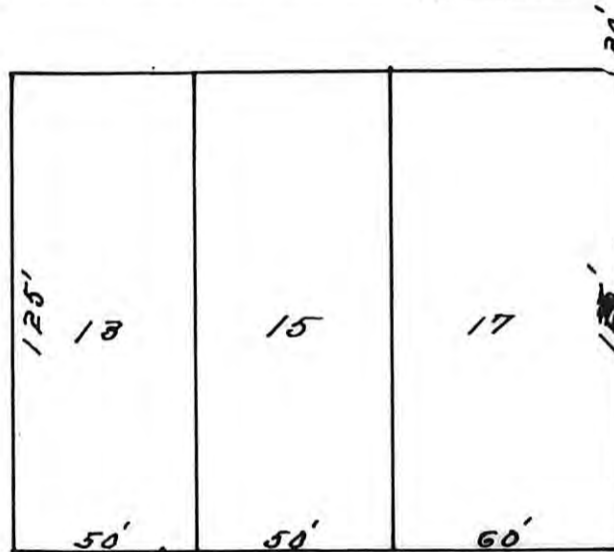
Sub-Division Block 6 Santa Fe Addition to City OF Hays.

FIFTH

ST.

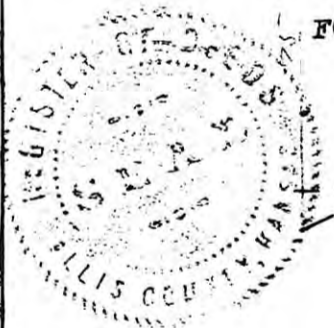


ST.



MILNER

FOURTH ST.



Ft. Hays Mil Res. Line

CARL A. ENGEL'S ADDITION

TO

CITY OF HAYS KANSAS

STATE OF KANSAS }
ELLIS COUNTY } SS

This instrument was filed for record

Scale 1 inch 50'

30 949
 2:00 o'clock 4 M received
 of *Carl Engel* *Four (4)*
 3 00 Register of Deeds

Redirection see Misc Book 22 page 432

THIS IS A DIRECT PHOTOGRAPHIC REPRODUCTION OF THE OFFICIAL INSTRUMENT (RECORDED PLAT).

THIS REPRODUCTION WAS MADE BY BUCHER & WILLIS, CONSULTING ENGINEERS, PLANNERS & ARCHITECTS IN JUNE 1979