

# Getz Addition

To

The Town of Herzog

Ellis County  
Kansas

Jan

Field notes and Plat of the Survey

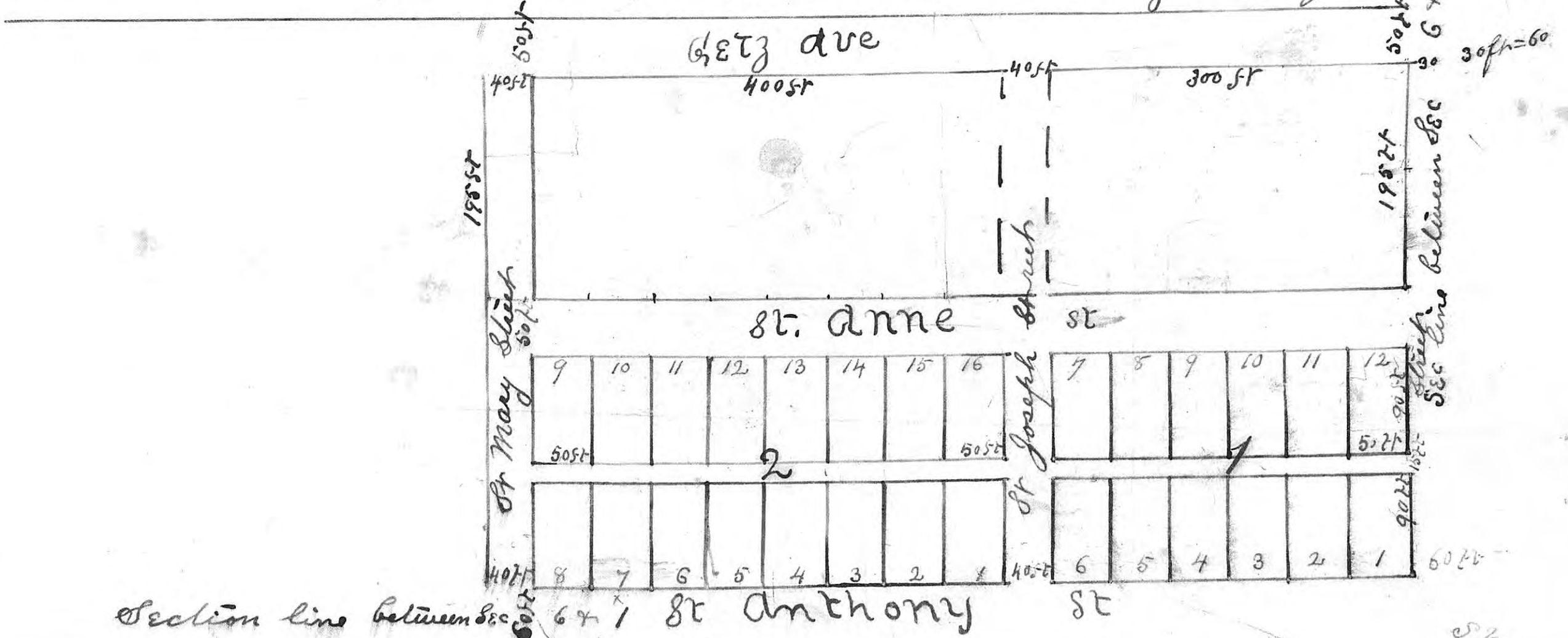
of John Getz Addition to the Town  
of Herzog on the SW Corner of the SW 1/4  
of Sec 6 Township 14 Range 15 West of 6 P m  
Ellis County Kansas to wit:

Delaware Street of the South line of section 6 is 60 ft wide  
being 30 feet on each side of section line between sec 6 & 7 and St. Anthony

Street 60 feet wide being 30 feet on each side of sec 6 & 7 thence N 30 ft east of said section line  
and Parallel to said Section line and SW corner of Block 1 N. 300 ft to St. Joseph Street  
said St 40 ft wide thence Center 400 ft on Block 2 to St. Mary St. said St 40 ft wide

NW corner of said Block and NW corner of said town. Block No. 1. fronts with 6 lots  
Block No. 2. fronts with 8 lots. Block No. 3. 300 ft by 195 ft contains 12 lots & Block 3 with 8 lots front

All of the Blocks front on St. Anthony street. Streets running East & West are as follows  
Delaware 60 ft St. Joseph 40 ft St. Mary 40 ft wide. Streets running North & South, St. Anthony  
60 ft. St. Anne 50 ft wide and Getz Ave 60 ft wide all alleys 15 ft wide all lots 50 by 90 ft figures  
designate size of lots Blocks Streets and alleys on part of the field notes surveyed by J. H. Wolfe  
County Surveyor Ellis Co. Kas



A true Copy of the Original  
Eli. Fox  
Register

Scale 100 ft to the inch

SW Corner  
Sec 6-14-16