

THIS IS A DIRECT PHOTOGRAPHIC REPRODUCTION OF THE OFFICIAL INSTRUMENT (RECORDED PLAT).

THIS REPRODUCTION WAS MADE BY BUCHER & WILLIS CONSULTING ENGINEERS, PLANNERS & ARCHITECTS IN AUGUST, 1979.

# PLAT OF GOLDEN BELT FOURTH ADDITION

HAYS, KANSAS

LEGAL DESCRIPTION OF GOLDEN BELT 4th ADDITION

A tract of land in the Northeast Quarter (NE $\frac{1}{4}$ ) of Section Thirty-Four (34) Township Thirteen (13) South, Range Eighteen (18) West of the Sixth (6) Principal Meridian, Ellis County, Kansas, and more particularly described as follows:

Commencing at the Northeast corner of the Northeast Quarter (NE $\frac{1}{4}$ ) of Section 34, Township 13 South, Range 18 West; THENCE on an assumed bearing of S 0°21'15" W along the East line of said Northeast Quarter, a distance of 340.00 feet to the point of beginning; THENCE continuing on the last described course, a distance of 1,358.26 feet; THENCE S 90°00'00" W, a distance of 1,042.70 feet; THENCE on a curve to the right having a radius of 330.00 feet, an arc distance of 34.56 feet; THENCE tangent to said curve N 84°00'00" W, a distance of 143.55 feet; THENCE N 15°26'35" E, a distance of 120.25 feet; THENCE on a curve to the left having a radius of 470.00 feet, an arc distance of 76.26 feet, the terminal tangent of which has a bearing of N 6°08'46" E; THENCE S 89°53'15" W, a distance of 111.73 feet; THENCE N 0°00'00" E, a distance of 122.67 feet; THENCE N 90°00'00" E, a distance of 5.00 feet; THENCE N 0°26'35" E, a distance of 1058.26 feet; THENCE N 90°00'00" E, a distance of 260.80 feet; THENCE S 0°21'15" W, a distance of 30.00 feet; THENCE S 90°00'00" E, a distance of 1,020.00 feet to the point of beginning. Said tract contains 39.7255 acres, more or less.

**STREETS, EASEMENTS AND PUBLIC PARKS**

Streets, boulevards, drives, alleys and pedestrian walkways as shown on this plat and not heretofore dedicated to and for public use are hereby so dedicated.

Easements are hereby dedicated for public use as utility easement right-of-way which are shown as lying between the dashed lines in widths indicated and as set forth on this plat, and said easements may be employed for the purpose of installing, repairing and maintaining gas lines, electric lines, telephone lines and all other forms and types of public utilities, new or hereafter used by the public over, under and along the strips marked "Utility Esm't."

**OWNER'S CERTIFICATE**

Know all men by these presents, that we, the undersigned property owners of the land above described, have caused the same to be surveyed and platted into lots, blocks, streets, alleys, easements, public parks and pedestrian walkways are hereby dedicated to and for the use of the public, and easements as indicated on the accompanying plat are hereby granted to the public for the purpose of constructing, operating, maintaining and repairing all public utilities.

WESTERN PLAINS SERVICE CORP., INC.

By: *James Desbien*

**NOTARY CERTIFICATES**

State of Kansas, County of Ellis, ss

Be it remembered that on this 14th day of March, 1977, before me, a notary public in and for said County and State, came James Desbien, President of Western Plains Service Corp., Inc., to me personally known to be the same person who executed the foregoing instrument of writing and duly acknowledged the execution of same. In testimony whereof, I have hereunto set my hand and affixed my notarial seal the day and year above written.

Notary Public

My Commission Expires

12/7/80

**RECORDED:**

State of Kansas, County of Ellis, ss

This is to certify that this instrument was filed for record in the Register of Deeds Office on the 13 day of April, 1977, in Book 2A, Page 48.

*Virginia Herzog*  
Register of Deeds

*Rose Ann Rupp*  
Deputy

**SURVEYOR'S CERTIFICATE:**

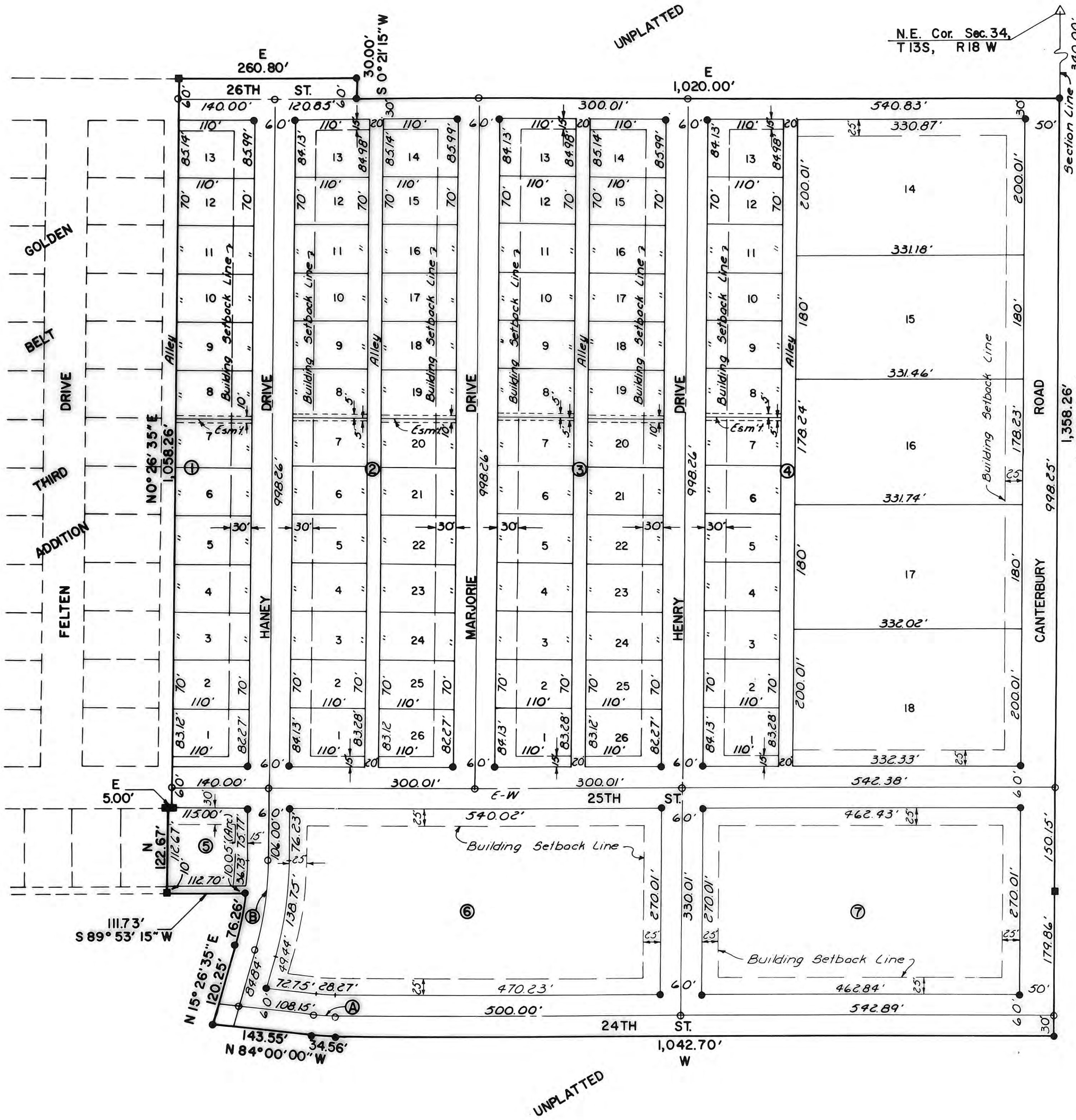
I, James R. Flemons, a licensed professional engineer in the State of Kansas, do hereby certify this plat to be true and correct to the best of my knowledge; and that all iron bars as shown have been accurately set. Survey completed in March, 1977.

*James R. Flemons*  
James R. Flemons, P.E.



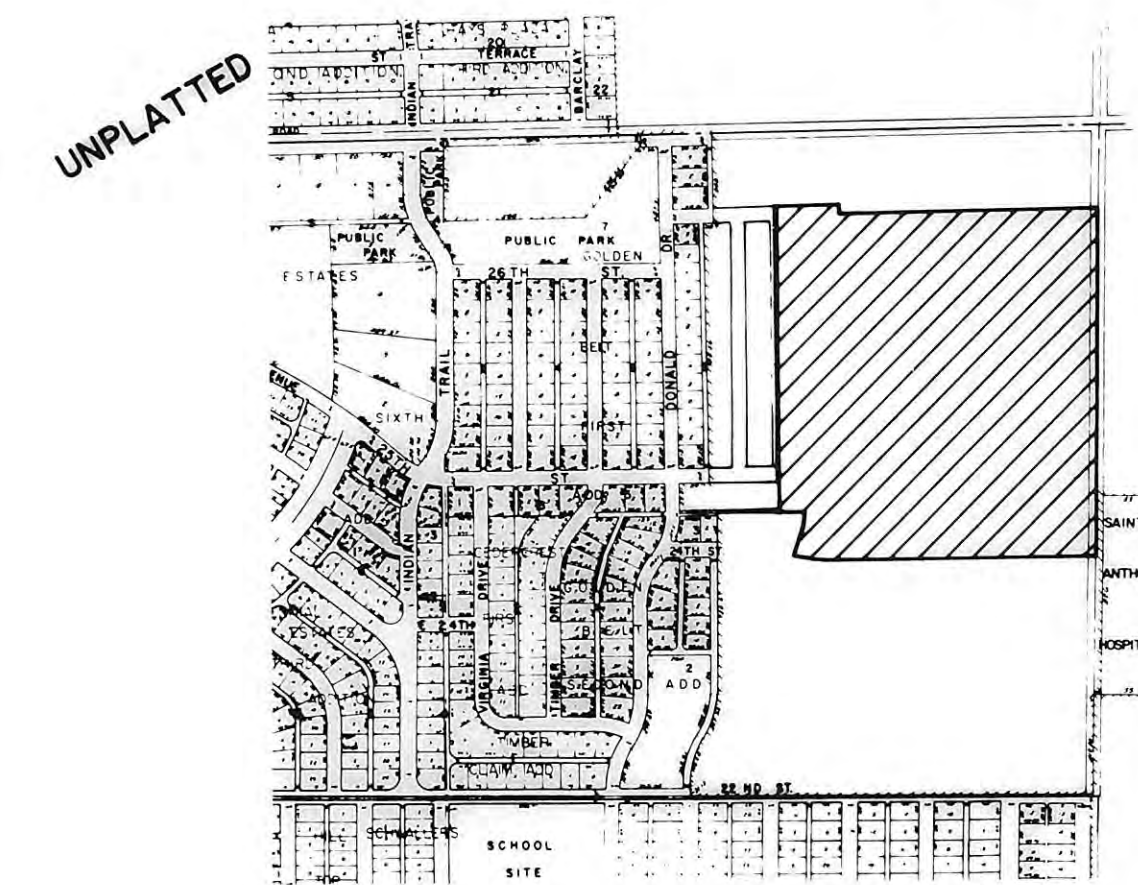
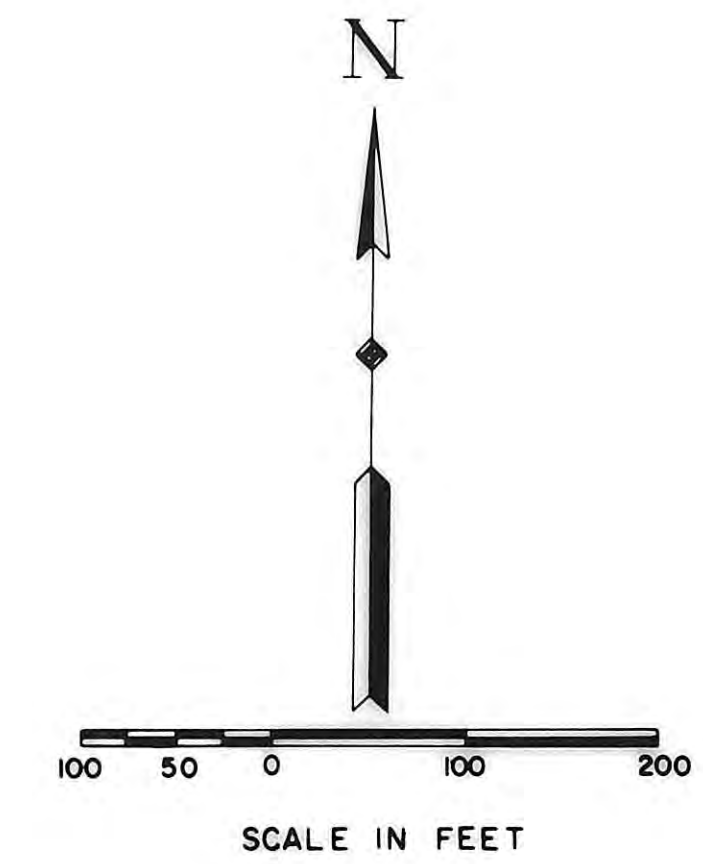
Plat & Dedication Resolution Ordinance No 2608  
Book 281, Page 734  
281 741  
281 743

PREPARED BY  
**BUCHER & WILLIS**  
CONSULTING ENGINEERS, PLANNERS & ARCHITECTS



**LEGEND**

- 1/2" Rebar (Found)
- 1/4" Rebar (Set)
- △ Section Corner (Found)



**LOCATION MAP**

CURVE DATA (at C of Street)				
CURVE	Δ	R	T	Lc
A	6°00'00"	300'	15.72'	31.42'
B	15°00'00"	500'	65.83'	130.90'

**APPROVALS**

This plat of GOLDEN BELT FOURTH ADDITION has been submitted to and approved by the City of Hays Planning Commission this 21 day of March, 1977.

*James R. Flemons*  
Chairman  
*Margaret E. Smith*  
Secretary

The dedication shown on this plat is accepted by the City Commission of the City of Hays, Kansas, this 16 day of March, 1977.

ATTEST: *Broderick Robertson* City Clerk  
CITY OF HAYS, KANSAS  
*John J. Wiley* Mayor