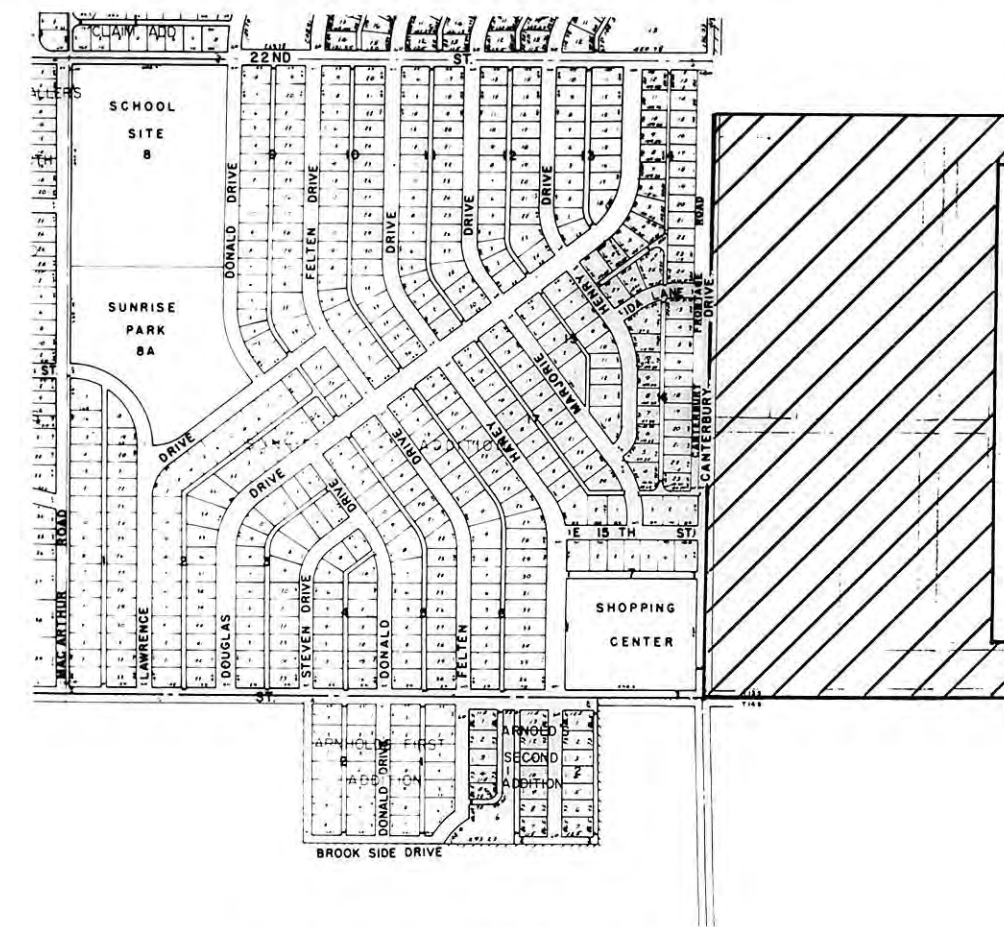


PLAT OF GOLDEN BELT SIXTH ADDITION HAYS, KANSAS



LEGAL DESCRIPTION
A tract of land situated in the Southwest Quarter (SW¹/₄) of Section Thirty-Five (35), Township Thirteen (13) South, Range Eighteen (18) West of the Sixth (6th) Principal Meridian, Ellis County, Kansas, more particularly described as follows:

Beginning at the Southwest Corner of said Section 35; Thence on an assumed bearing of N 89° 36' 05" E along the South line of said Section 35, a distance of 1,372.03 feet; Thence N 0° 00' 00" W, a distance of 215.00 feet; Thence S 89° 36' 05" W, a distance of 150.00 feet; Thence on a curve to the right having a radius of 30.00 feet; an arc distance of 46.92 feet; Thence tangent to said curve N 0° 00' 00" W, a distance of 1,972.88 feet; Thence N 90° 00' 00" E, a distance of 180.00 feet; Thence N 0° 00' 00" W, a distance of 197.05 feet; Thence S 89° 41' 28" W on a line parallel with and 224.00 feet South of the North line of said Southwest Quarter, a distance of 1,372.02 feet to the West line of said Section 35; Thence S 0° 00' 00" E, along said West line, a distance of 527.50 feet; Thence S 90° 00' 00" E, a distance of 262.00 feet; Thence S 0° 00' 00" E, a distance of 93.50 feet; Thence S 90° 00' 00" W, a distance of 262.00 feet; Thence S 0° 00' 00" E, along the West line of said Southwest Quarter, a distance of 92.91 feet; Thence S 90° 00' 00" E, a distance of 272.00 feet; Thence S 0° 00' 00" E, a distance of 367.00 feet; Thence S 90° 00' 00" W, a distance of 272.00 feet; Thence S 0° 00' 00" E along the West line of said Southwest Quarter, a distance of 1,334.91 feet to the point of beginning. Said tract contains 64.934 acres, more or less.

STREET, EASEMENTS AND PUBLIC PARKS
Streets, boulevards, drives, alleys and pedestrian walkways as shown on this plat and not heretofore dedicated to and for public use are hereby dedicated.

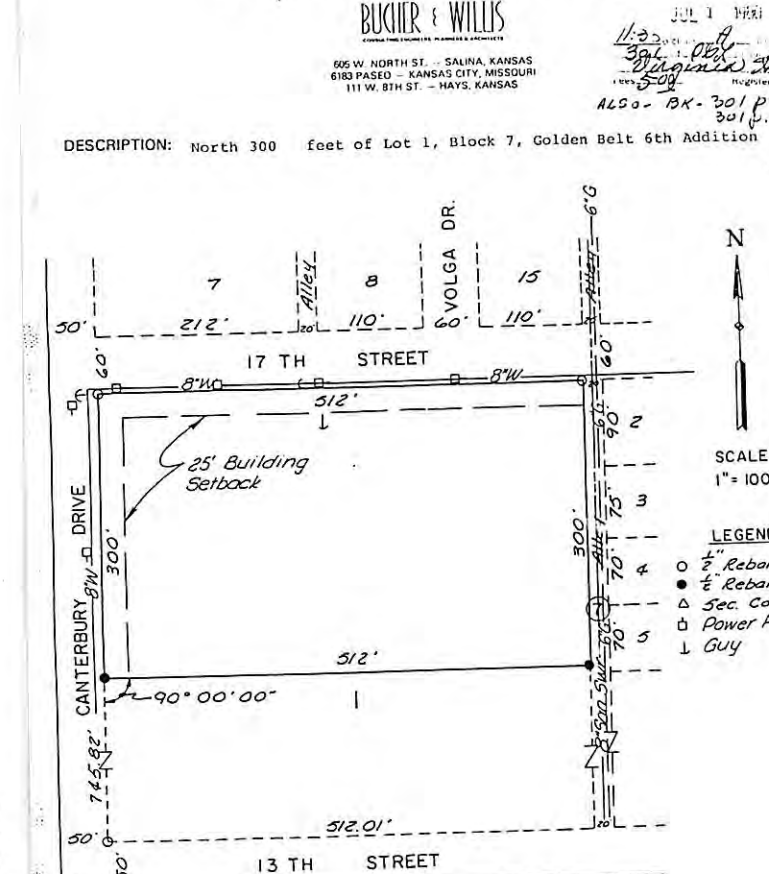
Easements are hereby dedicated for public use, as utility easement right-of-way, which are shown as lying between the dashed lines in widths indicated and as set forth on this plat, and said easements may be employed for the purpose of installing, repairing and maintaining gas lines, electric lines, telephone lines, and all other forms and types of public utilities, new or hereafter used, by the public over, under and along the strips marked "Utility Esm't".

OWNER'S CERTIFICATE
Know all men by these presents, that we, the undersigned property owners of the land above described, have caused the same to be surveyed and platted into lots, blocks, streets, alleys, easements, and pedestrian walkways, the same to be known as "Golden Belt Sixth Addition" to the City of Hays, in Ellis County, Kansas. The streets, alleys, and pedestrian walkways are hereby dedicated to and for the use of the public, and easements as indicated on the accompanying plat are hereby granted to the public for the purpose of constructing, operating, maintaining and repairing all public utilities.

WESTERN PLAINS SERVICE CORP.

By *James R. Flemons*
City Clerk

CERTIFICATE OF SURVEY



ss
I, *Betty Corwin*, Notary Public, do hereby certify that on the 12th day of February, 1979, at Hays, Kansas, I was personally present and saw the undersigned, James R. Flemons, City Clerk, and Margaret E. Smith, Chairman of the City Commission, and they acknowledged to me that they executed the foregoing plat for the purposes therein expressed.

Notary Public

James R. Flemons, City Clerk
Margaret E. Smith, Chairman

ENGINEER'S CERTIFICATE
I, *James R. Flemons*, Engineer, do hereby certify that I am a duly licensed Professional Engineer in the State of Kansas, and that I have personally surveyed and platted the above described plat, and that the same is true and correct to the best of my knowledge and belief.

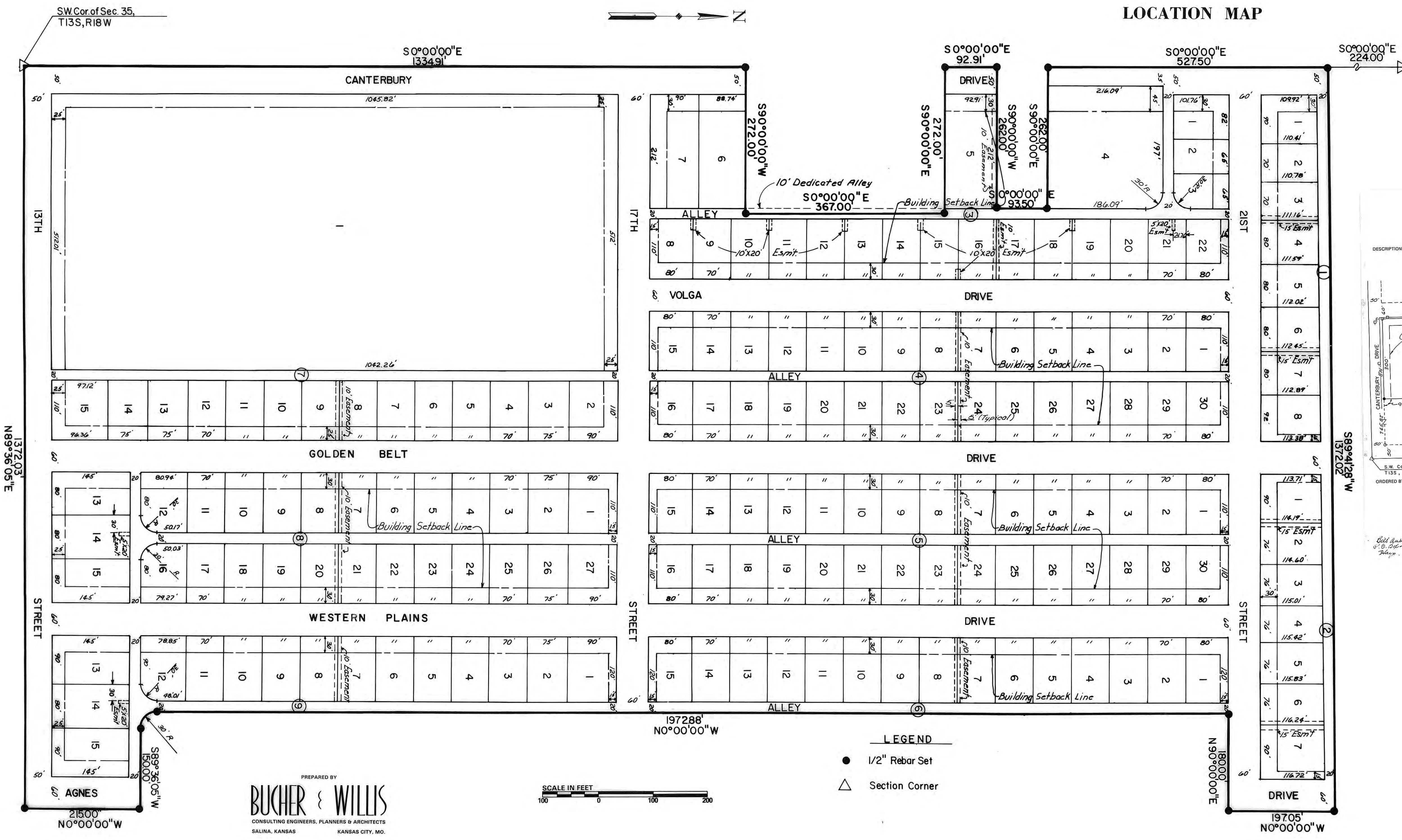
ATTEST: *James R. Flemons*
City Clerk

The dedication shown on this plat is accepted by the County Commission of Ellis County, Kansas, this 12th day of February, 1979.

County Clerk: *James R. Flemons*
Chairman: *Margaret E. Smith*

RECORDED:
State of Kansas, County of Ellis, ss

This is to certify that this instrument was filed for record in the Register of Deeds Office on the 12th day of February, 1979, in Book *Plat 1*, Page *345*.
Virginia Hergoy, Register of Deeds
Rose Ann Ruff, Deputy



LEGEND
● 1/2" Rebar Set
△ Section Corner



PREPARED BY
BUCHER & WILLIS
CONSULTING ENGINEERS, PLANNERS & ARCHITECTS
SALINA, KANSAS KANSAS CITY, MO.

SW Cor. of Sec. 35,
T13S, R18W

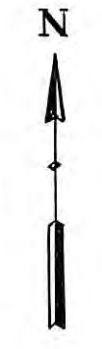
N 89° 36' 05" E
1372.03'

STREET

21500'
N 0° 00' 00" W



LOCATION MAP



S 89° 41' 28" W
1372.02'

STREET

19705'
N 0° 00' 00" W