

PLAT OF

GOLDEN BELT SEVENTH ADDITION

HAYS, KANSAS

LEGAL DESCRIPTION

A tract of land situated in the Southwest Quarter (SW4) of Section Thirty-Five (35), Township Thirteen (13) South, Range Eighteen (18) West of the Sixth (6th) Principal Meridian, Ellis County, Kansas, more particularly described as follows:

Commencing at the Southwest Corner of said Section 35, Township 13 South, Range 18 West; THENCE on an assumed bearing of N 89°36'05" E along the South line of said Section 35, a distance of 1372.03 feet to the point of beginning; THENCE on a bearing of N 0°00'00" E a distance of 215.00 feet; THENCE on a bearing of S 89°36'05" W a distance of 149.79 feet; THENCE on a curve to the right having a radius of 30.00 feet, an arc distance of 47.33 feet; THENCE tangent to said curve on a bearing of N 0°00'00" E a distance of 1972.67 feet; THENCE on a bearing of N 90°00'00" E a distance of 180.00 feet; THENCE on a bearing of N 0°00'00" E a distance of 197.05 feet; THENCE on a bearing of N 89°41'28" E a distance of 315.00 feet; THENCE on a bearing of S 0°00'00" E a distance of 198.75 feet; THENCE on a bearing of S 90°00'00" W a distance of 185.00 feet; THENCE on a bearing of S 0°00'00" E a distance of 1970.51 feet; THENCE on a curve to the left having a radius of 30.00 feet an arc distance of 47.33 feet; THENCE tangent to said curve on a bearing of N 89°36'05" E a distance of 139.79 feet; THENCE on a bearing of S 0°00'00" W a distance of 215.00 feet to a point on the South line of said Section 35; THENCE on a bearing of S 89°36'05" W a distance of 300.00 feet to the point of beginning. Said tract contains 17.158 acres more or less.

STREETS, ALLEYS AND EASEMENTS:

Streets, boulevards, drives and alleys as shown on this plat and not heretofore dedicated to and for public use are hereby so dedicated.

Easements are hereby dedicated for public use, as utility easement right-of-way, which are shown as lying between the dashed lines in widths indicated and as set forth on this plat, and said easements may be employed for the purpose of installing, repairing and maintaining gas lines, electric lines, telephone lines, and all other forms and types of public utilities, new or hereafter used, by the public over, under and along the strips marked "Utility Esm't".

OWNER'S CERTIFICATE

Know all men by these presents, that we, the undersigned property owners of the land above described, have caused the same to be surveyed and platted into lots, blocks, streets, alleys, easements, the same to be known as "Golden Belt Seventh Addition" to the City of Hays, in Ellis County, Kansas. The streets, alleys, and easements are hereby dedicated to and for the use of the public and easements as indicated on the accompanying plat are hereby granted to the public for the purpose of constructing, operating, maintaining and repairing all public utilities.

WESTERN PLAINS SERVICE CORP.

By *James R. Desbien*  
Jim Desbien, President

NOTARY CERTIFICATES

State of Kansas, County of Ellis, ss

Be it remembered that on this 14th day of April, 1982, before me, a notary public in and for said County and State, came Jim Desbien, President of Western Plains Service Corp., to me personally known to be the same person (s) who executed the foregoing instrument of writing and duly acknowledged the execution of same. In testimony whereof, I have hereunto set my hand and affixed my notarial seal the day and year above written.

My Commission expires

LINDA K. BIXENMAN  
STATE NOTARY PUBLIC  
ELLIS COUNTY, KANSAS  
MY COMM. EXP. 6-21-83

*Linda K. Bixenman*  
Notary Public

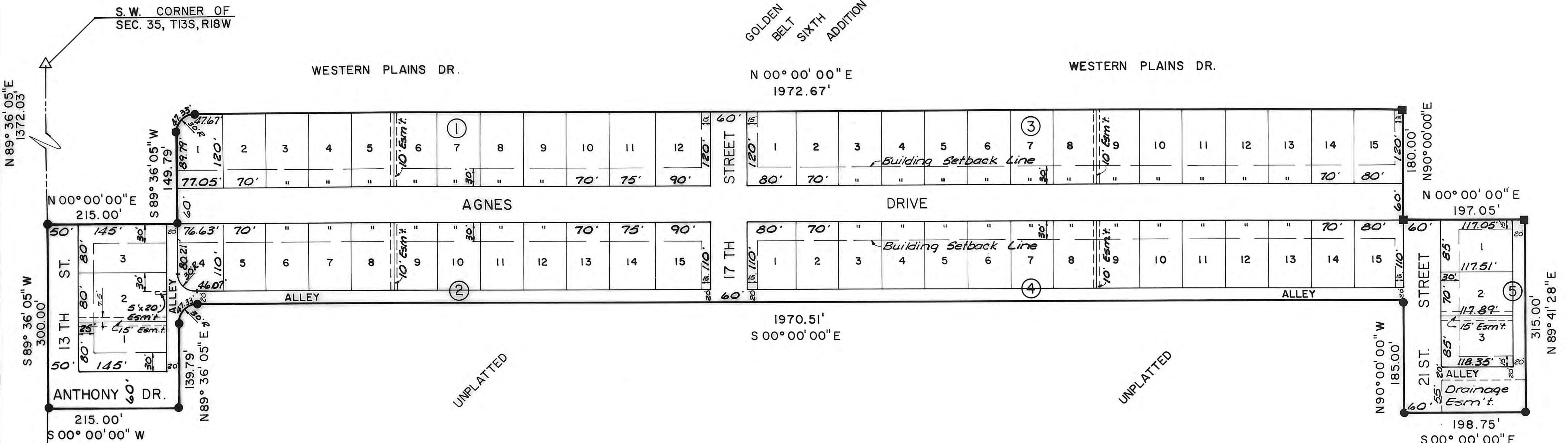
SURVEYOR'S CERTIFICATE:

I, James R. Flemons, a licensed professional engineer in the State of Kansas, do hereby certify this plat to be true and correct to the best of my knowledge; and that all iron bars as shown have been accurately set. Survey completed in February, 1982.

*James R. Flemons*  
James R. Flemons, P.E.



PREPARED BY  
BUCHER & WILLIS  
CONSULTING ENGINEERS, PLANNERS & ARCHITECTS  
SALINA, KANSAS KANSAS CITY, MO.



N 89° 36' 05" E 1372.03'  
S 89° 36' 05" W 300.00'  
N 00° 00' 00" E 215.00'  
S 89° 36' 05" W 149.79'  
N 89° 36' 05" E 139.79'  
S 00° 00' 00" W 215.00'

GOLDEN BELT SIXTH ADDITION

WESTERN PLAINS DR.

N 00° 00' 00" E 1972.67'

WESTERN PLAINS DR.

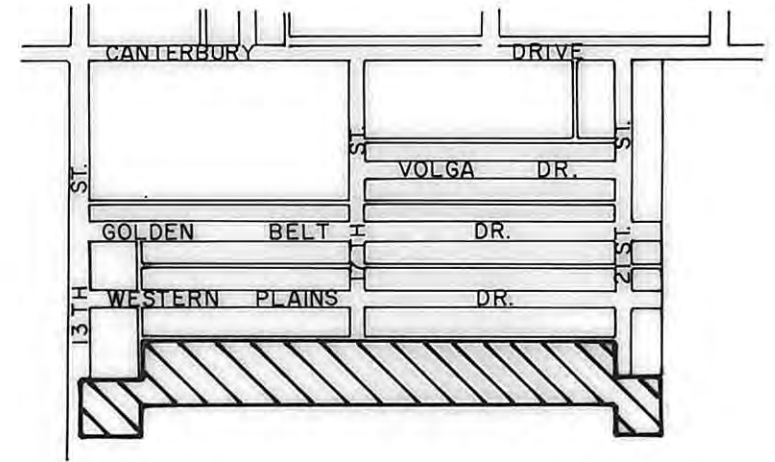
UNPLATTED

UNPLATTED

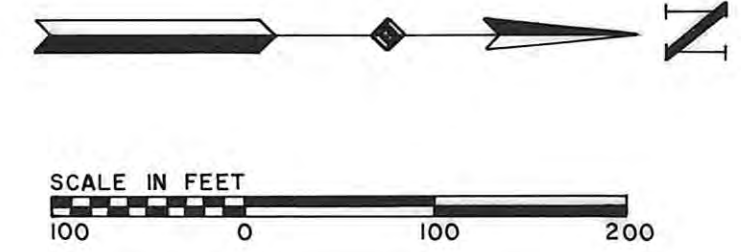
UNPLATTED

LEGEND

- △ SECTION CORNER
- 1/2 REBAR FOUND
- 1/2 REBAR SET



LOCATION MAP



ORDINANCE NO. 3105  
AN ORDINANCE VACATING A PORTION OF A UTILITY EASEMENT LOCATED ON LOT NINE (9), BLOCK TWO (2), GOLDEN BELT SEVENTH ADDITION TO THE CITY OF HAYS, KANSAS.  
BK: 356 Pg: 620

RECORDED:  
State of Kansas, County of Ellis, ss

This is to certify that this instrument was filed for record in the Register of Deeds Office on the 23 day of April, 1982 in Book 297, Page 297 at 8 A.M. for \$ 20.00

Plat & Well's Book 321p. 620  
Resolution Book 321p 627

*Virginia Hergog*  
Register of Deeds  
*Rose Ann Rupp*  
Deputy

APPROVALS:

This plat has been submitted to and approved by the Hays - Ellis County Planning Commission on this \_\_\_\_\_ day of \_\_\_\_\_, 19\_\_\_\_.

*Secretary* Secretary *Chairman* Chairman

The dedication shown on this plat is accepted by the City Commission of the City of Hays, Kansas, this 14th day of April, 1982.

ATTEST: CITY OF HAYS, KANSAS  
*City Clerk* City Clerk *Mayor* Mayor