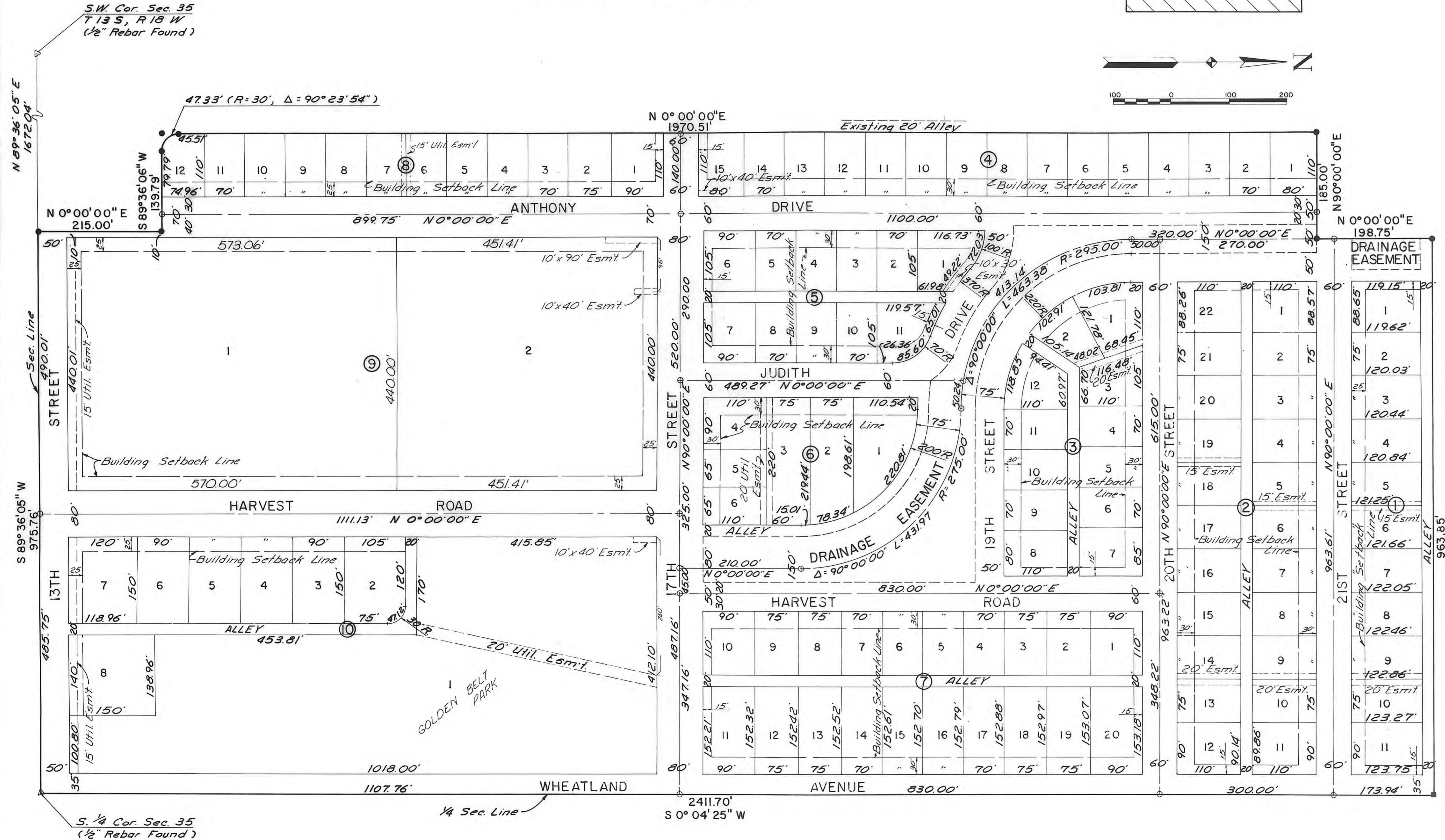
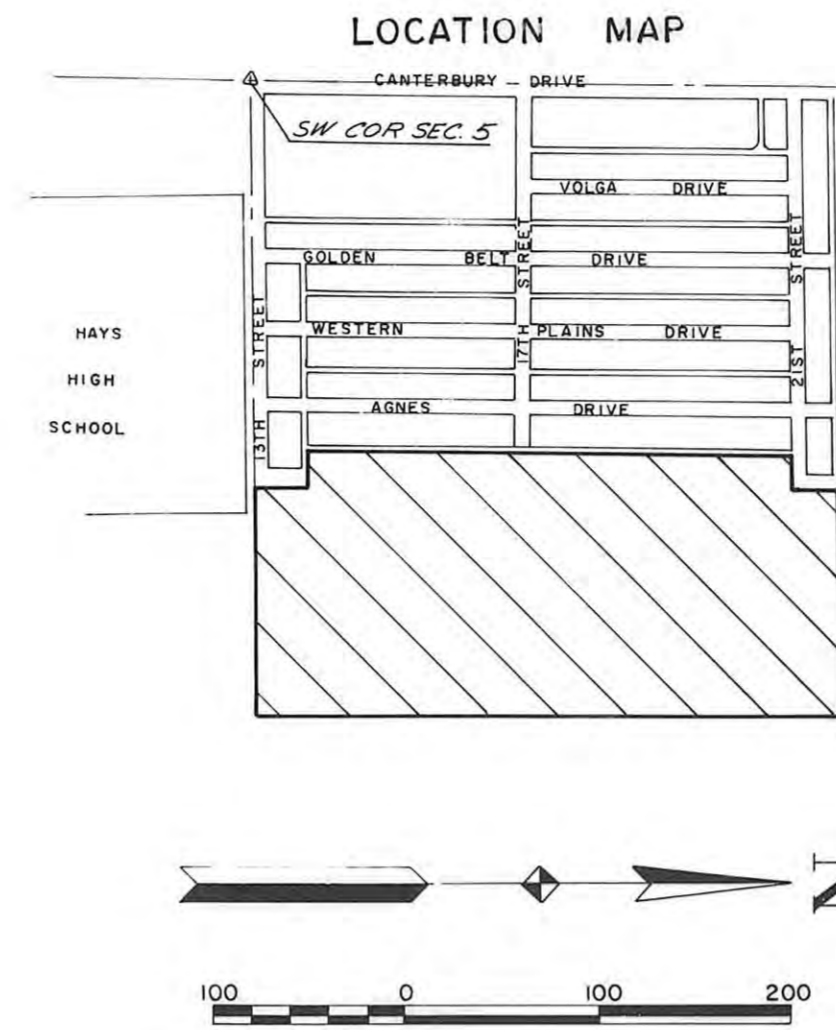


PLAT OF GOLDEN BELT EIGHTH ADDITION HAYS, KANSAS



LEGAL DESCRIPTION

A tract of land situated in the Southwest Quarter (SW $\frac{1}{4}$) of Section Thirty-Five (35), Township Thirteen (13) South, Range Eighteen (18) West of the Sixth (6th) Principal Meridian, Ellis County, Kansas, more particularly described as follows:

Commencing at the Southwest Corner of said Section 35, Township 13 South, Range 18 West; THENCE on an assumed bearing of N 89°36'05" E along the south line of said Section 35, a distance of 1,672.04 feet to the point of beginning; THENCE on a bearing of N 0°00'00" E, a distance of 215.00 feet; THENCE on a bearing of S 89°36'06" W, a distance of 139.79 feet; THENCE on a curve of 30.00 feet, an arc of 47.33 feet; THENCE tangent to said curve on a bearing of N 0°00'00" E, a distance of 1,970.51 feet; THENCE on a bearing of N 90°00'00" E, a distance of 185.00 feet; THENCE on a bearing of N 0°00'00" E, a distance of 198.75 feet; THENCE on a bearing of N 89°41'28" E, a distance of 963.85 feet to the east line of the Southwest Quarter (SW $\frac{1}{4}$) of said Section 35; THENCE on a bearing of S 0°04'25" W, a distance of 2,411.70 feet to the southeast corner of said Southwest Quarter (SW $\frac{1}{4}$); THENCE on a bearing of S 89°36'05" W along the south line of said Section 35, a distance of 975.76 feet to the point of beginning. Said tract contains 61.857 acres, more or less.

STREET, EASEMENTS AND PUBLIC PARKS

Streets, boulevards, drives and alleys as shown on this plat and not heretofore dedicated to and for public use are hereby dedicated.

Easements are hereby dedicated for public use, as utility easement right-of-way, which are shown as lying between the dashed lines in widths indicated and as set forth on this plat, and said easements may be employed for the purpose of installing, repairing and maintaining gas lines, electric lines, telephone lines, and all other forms and types of public utilities, new or hereafter used, by the public over, under and along the strips marked "Utility Esm't".

OWNER'S CERTIFICATE

Know all men by these presents, that we, the undersigned property owners of the land above described, have caused the same to be surveyed and platted into lots, blocks, streets, alleys and easements, the same to be known as "Golden Belt Eighth Addition" to the City of Hays, in Ellis County, Kansas. The streets and alleys are hereby dedicated to and for the use of the public, and easements as indicated on the accompanying plat are hereby granted to the public for the purpose of constructing, operating, maintaining and repairing all public utilities.

WHEEL ENTERPRISES
By *John Cecil, Partner*

WESTERN PLAINS SERVICE CORP.
By *James Desbien, President*

NOTARY CERTIFICATES

State of Kansas, County of Ellis, ss

Be it remembered that on this 14th day of February, 1983, before me, a notary public in and for said County and State, came James Desbien, President of Western Plains Service Corp. and John Cecil, Partner of Wheel Enterprises, to me personally known to be the same person (s) who executed the foregoing instrument of writing and duly acknowledged the execution of same. In testimony whereof, I have hereunto set my hand and affixed my notarial seal the day and year above written.

My Commission expires 6/21/83

Sinda K. Bixenman
Notary Public

LINDA K. BIXENMAN
STATE NOTARY PUBLIC
ELLIS COUNTY, KANSAS
MY COMM. EXP. 6/21/83

LEGEND

- △ Section or 1/4 Section Corner
- 1/2" Rebar Found
- 1/2" Rebar Set

APPROVALS:

This plat has been submitted to and approved by the Hays - Ellis County Planning Commission this 21 day of February, 1983.

P. Johnson Secretary
Robert Nicholas Chairman

The dedication shown on this plat is accepted by the City Commission of the City of Hays, Kansas, this ___ day of ___, 19__.

ATTEST: CITY OF HAYS, KANSAS

City Clerk Mayor

RECORDED:
State of Kansas, County of Ellis, ss

This is to certify that this instrument was filed for record in the Register of Deeds Office on the 18 day of May, 1983 in Photo Cabinet.
Page 304

Rose Ann Repp Deputy
Virginia Henry Register of Deeds

Ord. Sk 322 - page 598
Plat & Mcdi Sk 322 - page 599
Resolution Sk 322 - page 609
Resolution Sk 408 - page 320 (Improvements)

SURVEYOR'S CERTIFICATE:

I, James R. Flemons, a licensed professional engineer in the State of Kansas, do hereby certify this plat to be true and correct to the best of my knowledge; and that all iron bars as shown have been accurately set. Survey completed in February 1983.

James R. Flemons
James R. Flemons P.E.

BUCHER, WILLIS & RATLIFF
CONSULTING ENGINEERS, PLANNERS & ARCHITECTS