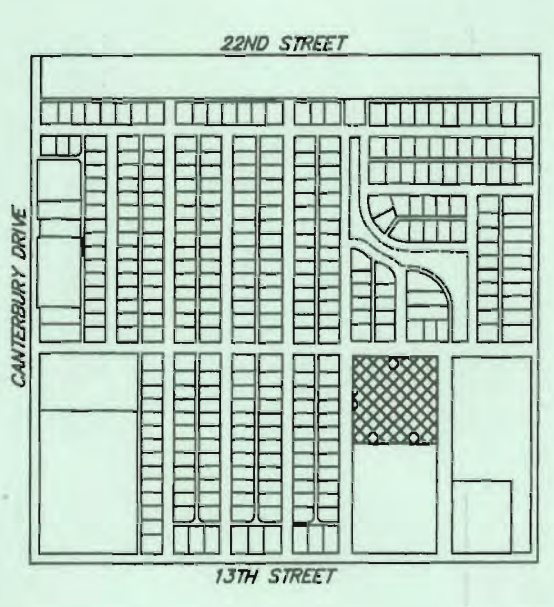
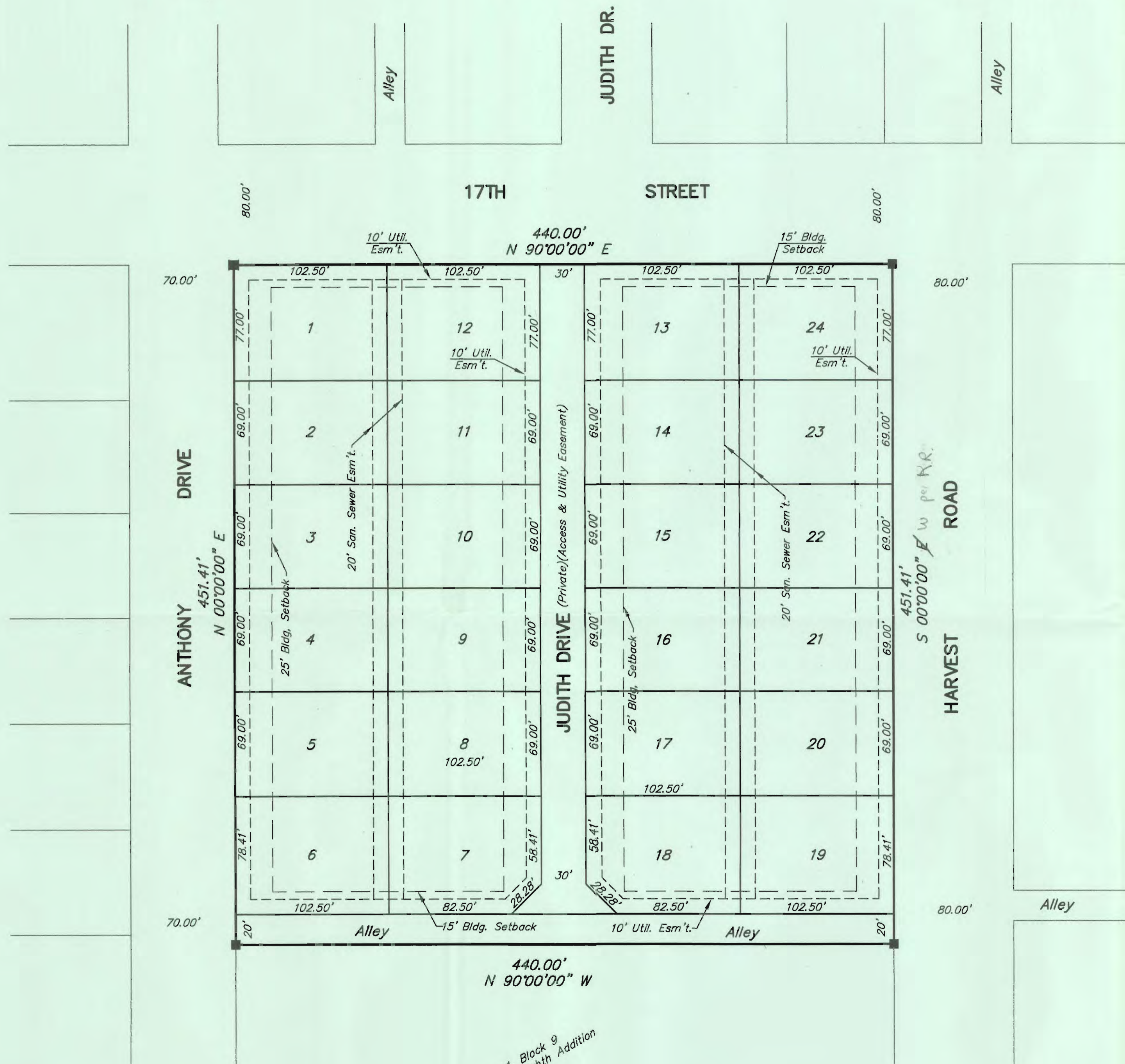
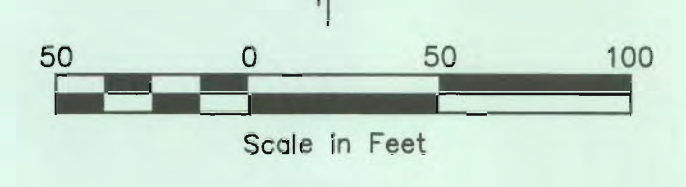


# REPLAT OF LOT 2, BLOCK 9, GOLDEN BELT 8TH ADDITION HAYS, KANSAS



**LEGEND**  
 ■ Set 1/2" Bar w/ Cap  
 Stamped "RUDER RLS-918"



**APPROVALS:**

This Replat of Lot 2, Block 9, Golden Belt 8th Addition, has been submitted to and approved by the Hays Planning Commission this 20th day of August, 2012.

Lynn Dault  
 CHAIRMAN  
Randy R. Rein  
 SECRETARY

**DESCRIPTION**

Lot 2, of Block 9, of the Golden Belt 8th Addition to the City of Hays, Ellis County, Kansas.

**ALLEY & EASEMENTS:**

Alleys, as shown on this plat and not heretofore dedicated to and for public use are hereby dedicated.  
 Easements are hereby dedicated for public use, as access and/or utility easement right-of-way, which are shown as lying between the dashed lines in widths indicated and as set forth on this plat, and said easements may be employed for the purpose of installing, repairing and maintaining gas lines, electric lines, telephone lines, and all other forms and types of public utilities, now or hereafter used, by the public over, under and along the strips marked "Utility Esm't."

The dedications shown on this plat accepted by the City Commission of the City of Hays, Kansas, this 11th day of October, 2012.

[Signature]  
 MAYOR  
 ATTEST: Lorin Wang, City Clerk  
[Signature]  
 John T. Bird, Attorney for the City of Hays



**RECORDED:**

State of Kansas, County of Ellis, ss:  
 This is to certify that this instrument was filed for record in the Register of Deeds Office on the 19 day of December, 2012 in Book Cal.# 2 Page 448.  
Rebecca Huxey REGISTER OF DEEDS  
Martha Miller DEPUTY  
 Plat + Dedc. = BK: 813 PG: 749  
 Repl. # 2012-013 = BK: 813 PG: 755  
 Dr. Add. = BK: 813 PG: 756

**OWNER'S CERTIFICATE:**

Know all men by these presents, that we, the undersigned property owners of the land above described have caused the same to be surveyed and platted into Lots, Alley and Easements, the same to be known as "Replat of Lot 2, Block 9, Golden Belt 8th Addition", in Hays, Kansas. The Alley is hereby dedicated to and for the use of the public, and the easements as indicated on the accompanying plat are hereby granted to the public for the purpose of constructing, operating, maintaining, and repairing all public utilities.

Laverne W. Schumacher Revocable Living Trust  
 Dated May 1, 2008  
 By Laverne W. Schumacher  
 Laverne W. Schumacher, Trustee

**NOTARY CERTIFICATE:**

State of Kansas, County of Ellis, ss:  
 Be it remembered that on this 4th day of December 2012, before me, a Notary Public in and for said County and State, came Laverne W. Schumacher, Trustee of the Laverne W. Schumacher Revocable Living Trust. Dated May 1, 2008, to me personally known to be the same person who executed the foregoing instrument of writing and duly acknowledged the execution of same. In testimony whereof, I have hereunto set my hand and affixed my notarial seal, the day and year above written.

[Signature]  
 Notary Public  
 My Commission Expires: 11-21-2015

**REVIEW SURVEYOR'S CERTIFICATE:**

State of Kansas, County of Ellis, ss:  
 I hereby certify that the review of this plat was found to be in compliance with the requirements of K.S.A. 58-2005. Approved this 29th day of November, 2012.



**SURVEYOR'S CERTIFICATE:**

I, Harvey Ruder, a Registered Land Surveyor in the State of Kansas, do hereby certify this Plat to be true and correct to the best of my knowledge.  
Harvey Ruder  
 Harvey Ruder  
 Date 11-29-12



**RUDER ENGINEERING & SURVEYING, LLC**  
 1376 Butterfield Trail Rd.  
 Hays, Kansas 67601  
 785-628-8134