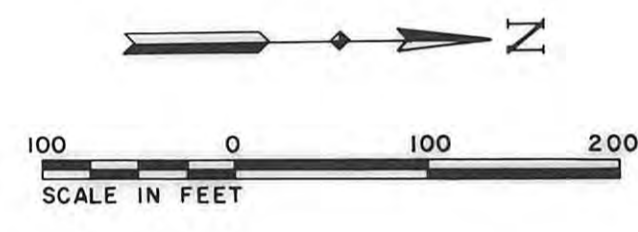
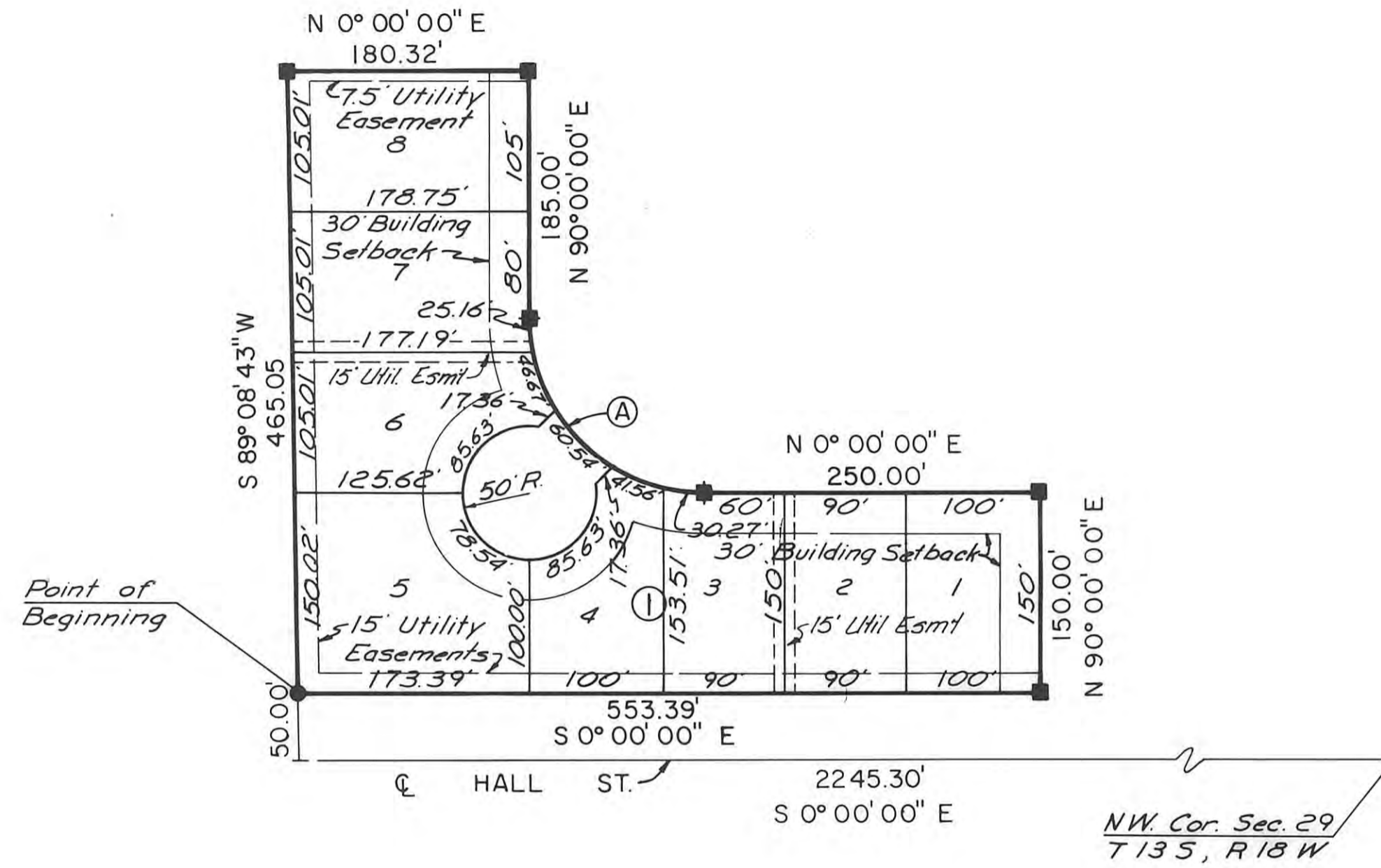


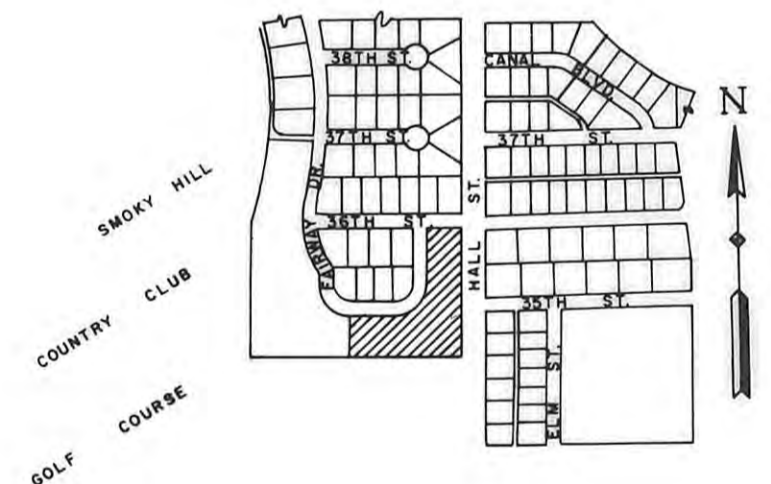
# GOLDEN BELT COUNTRY CLUB SECOND ADDITION

BEING A REPLAT OF LOT 1, BLOCK 1  
GOLDEN BELT COUNTRY CLUB ADDITION



CURVE DATA				
CURVE	Δ	R	T	LC
(A)	90°00'00"	130'	130.00'	204.20'

**LEGEND**  
 1/2" Rebar Found  
 1/2" Rebar Set



LOCATION MAP

**DESCRIPTION**

A tract of land situated in the Northeast Quarter (NE<sup>1</sup>/<sub>4</sub>) of Section Twenty-Nine (29), Township Thirteen (13) South, Range Eighteen (18) West of the Sixth Principal Meridian, Ellis County, Kansas, more particularly described as follows:

Commencing at the Northeast (NE) Corner of Section Twenty-Nine (29), Township Thirteen (13) South, Range Eighteen (18) West; THENCE on an assumed bearing of S 0°00'00" E along the East line of said Section 29 a distance of 2245.30 feet; THENCE on a bearing of S 89°08'43" W a distance of 50.00 feet to the Southeast Corner of Lot 1, Block 1, Golden Belt Country Club Addition to the City of Hays, Kansas and the point of beginning; THENCE continuing on the last described course a distance of 465.05 feet to the Southwest (SW) Corner of said Lot 1; THENCE on a bearing of N 0°00'00" E a distance of 180.32 feet to a point on the South Right-of-Way line of Fairway Drive; THENCE on a bearing of N 90°00'00" E along the South Right-of-Way line of Fairway Drive a distance of 185.00 feet; THENCE on a curve to the left along the Southerly Right-of-Way line of Fairway Drive having a radius of 130.00 feet, an arc distance of 204.20 feet; THENCE on a bearing of N 0°00'00" E along the East line of Fairway Drive a distance of 250.00 feet to a point on the South Right-of-Way line of 36th Street; THENCE on a bearing of N 90°00'00" E along the South line of 36th Street a distance of 150.00 feet to a point on the West Right-of-Way line of Hall Street; THENCE on a bearing of S 0°00'00" E along the East line of said Lot 1 a distance of 553.39 feet to the point of beginning. Said tract contains 3.280 acres more or less.

**STREETS, ALLEYS AND EASEMENTS**

Streets, boulevards, drives and alleys as shown on this plat and not heretofore dedicated to and for public use are hereby so dedicated.

Easements are hereby dedicated for public use, as utility easement right-of-way, which are shown as lying between the dashed lines in widths indicated and as set forth on this plat, and said easements may be employed for the purpose of installing, repairing and maintaining gas lines, electric lines, telephone lines, and all other forms and types of public utilities, new or hereafter used, by the public over, under and along the strips marked "Utility Esm't".

**OWNER'S CERTIFICATE**

Know all men by these presents, that we, the undersigned property owners of the land above described, have caused the same to be surveyed and platted into lots, blocks, streets, alleys, easements, the same to be known as "Golden Belt Country Club Second Addition, being a Replat of Lot 1, Block 1, Golden Belt Country Club Addition" to the City of Hays, in Ellis County, Kansas. The streets, alleys, and easements are hereby dedicated to and for the use of the public and easements as indicated on the accompanying plat are hereby granted to the public for the purpose of constructing, operating, maintaining and repairing all public utilities.

WESTERN PLAINS SERVICE CORP.  
 By James Desbien  
 James Desbien, President

**NOTARY CERTIFICATES**

State of Kansas, County of Ellis, ss

Be it remembered that on this 5<sup>th</sup> day of December, 1983, before me, a notary public in and for said County and State, came James Desbien, President of Western Plains Service Corp., to me personally known to be the same person (s) who executed the foregoing instrument of writing and duly acknowledged the execution of same. In testimony whereof, I have hereunto set my hand and affixed my notarial seal the day and year above written.

My Commission expires 1 Feb 87

Donald P. Hanson  
 Notary Public

**SURVEYOR'S CERTIFICATE**

I, James R. Flemons, a licensed professional engineer in the State of Kansas, do hereby certify this plat to be true and correct to the best of my knowledge; and that all iron bars as shown have been accurately set. Survey completed in December, 1983.

James R. Flemons  
 James R. Flemons, P.E.



**RECORDED**

State of Kansas, County of Ellis, ss

This is to certify that this instrument was filed for record in the Register of Deeds Office on the 26 day of March, 1984 in Book (Plats) Cabinet, Page # 315, \$ 20.00

Replat & Replat - Pl 343 page 629  
 Resolution Pl 340 page 636

Virginia Hertz  
 Register of Deeds  
Rose Ann Rupp  
 Deputy

**APPROVALS**

This plat has been submitted to and approved by the Hays-Ellis County Planning Commission on this 19<sup>th</sup> day of December, 1983.

Amy J. Schmitt Secretary      Glenn Fortmiller Chairman

The dedication shown on this plat is accepted by the City Commission of the City of Hays, Kansas, this 8<sup>th</sup> day of March, 1984.

ATTEST:      CITY OF HAYS, KANSAS

Arnold Soderstrom City Clerk      Harriet G. Rupp Mayor

**BUCHER, WILLIS & RATLIFF**  
 CONSULTING ENGINEERS, PLANNERS & ARCHITECTS