

**PLAT OF
GOLDEN BELT
COUNTRY CLUB ADDITION
HAYS, KANSAS**

CURVE DATA (C STREET)				
CURVE	Δ	R	T	Lc
(A)	90°00'00"	100'	100.00'	157.08"
(B)	90°00'00"	100'	100.00'	157.08"
(C)	27°02'37"	100'	24.05'	47.20'
(D)	40°44'00"	250'	92.81'	177.73'
(E)	29°05'02"	1662.94'	431.36'	844.12'
(F)	38°48'48"	444.64'	227.10'	436.69'
(G)	66°34'51"	100'	65.66'	116.21'
(H)	90°00'00"	100'	100.00'	157.08'

LEGAL DESCRIPTION

A tract of land in the Northeast Quarter (NE $\frac{1}{4}$) of Section Twenty-Nine (29), Township Thirteen (13) South, Range Eighteen (18) West of the Sixth Principal Meridian, Ellis County, Kansas, more particularly described as follows:

Beginning at the Northeast corner of the Northeast Quarter (NE $\frac{1}{4}$) of Section 29, T13S, R18W; THENCE on an assumed bearing of S 0°00'00" E along the East line of said Northeast Quarter (NE $\frac{1}{4}$), a distance of 2245.30 feet; THENCE S 89°08'43" W, a distance of 927.40 feet; THENCE N 0°01'31" W, a distance of 565.62 feet; THENCE on a curve to the left having a radius of 1462.94 feet, an arc distance of 885.91 feet, the long chord of said curve having a bearing of N 1°57'15" E and a length of 872.44 feet; THENCE on a curve to the right having a radius of 844.64 feet, an arc distance of 572.17 feet; THENCE tangent to said curve N 23°25'09" E, a distance of 273.38 feet to the North line of said Northeast Quarter (NE $\frac{1}{4}$); THENCE N 89°10'26" E along said North line, a distance of 749.94 feet to the point of beginning. Said tract contains 45.698 acres, more or less.

STREET, EASEMENTS AND PUBLIC PARKS

Streets, boulevards, drives and alleys as shown on this plat and not heretofore dedicated to and for public use are hereby dedicated.

Easements are hereby dedicated for public use, as utility easement right-of-way, which are shown as lying between the dashed lines in widths indicated and as set forth on this plat, and said easements may be employed for the purpose of installing, repairing and maintaining gas lines, electric lines, telephone lines, and all other forms and types of public utilities, new or hereafter used, by the public over, under and along the strips marked "Utility Esm't".

OWNER'S CERTIFICATE

Know all men by these presents, that we, the undersigned property owners of the land above described, have caused the same to be surveyed and platted into lots, blocks, street, alleys, easements, and pedestrian walkways, the same to be known as "Golden Belt Country Club Addition" to the City of Hays, in Ellis County, Kansas. The streets and alleys are hereby dedicated to and for the use of the public, and easements as indicated on the accompanying plat are hereby granted to the public for the purpose of constructing, operating, maintaining and repairing all public utilities.

WESTERN PLAINS SERVICE CORP.

Jim Desbien
Jim Desbien
President

NOTARY CERTIFICATES

State of Kansas, County of Ellis, ss

Be it remembered that on this 6th day of August, 1979, before me, a notary public in and for said County and State, came Jim Desbien, President of Western Plains SVC Corp., to me personally known to be the same person (s) who executed the foregoing instrument of writing and duly acknowledged the execution of same. In testimony whereof, I have hereunto set my hand and affixed my notarial seal the day and year above written.

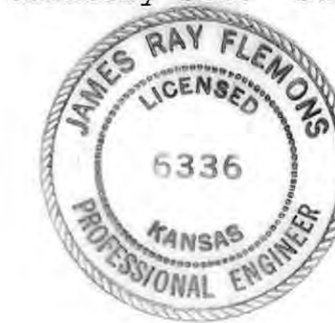
My Commission expires

Donald H. Wood
Notary Public

1 Feb 93

SURVEYOR'S CERTIFICATE:

I, James R. Flemons, a licensed professional engineer in the State of Kansas, do hereby certify this plat to be true and correct to the best of my knowledge; and that all iron bars as shown have been accurately set. Survey completed in August, 1978.



James R. Flemons
James R. Flemons, P.E.

APPROVALS:

This plat has been submitted to and approved by the Hays - Ellis County Planning Commission this 20th day of August, 1979.

Richard W. Anderson Secretary
Margaret E. Smith Chairman

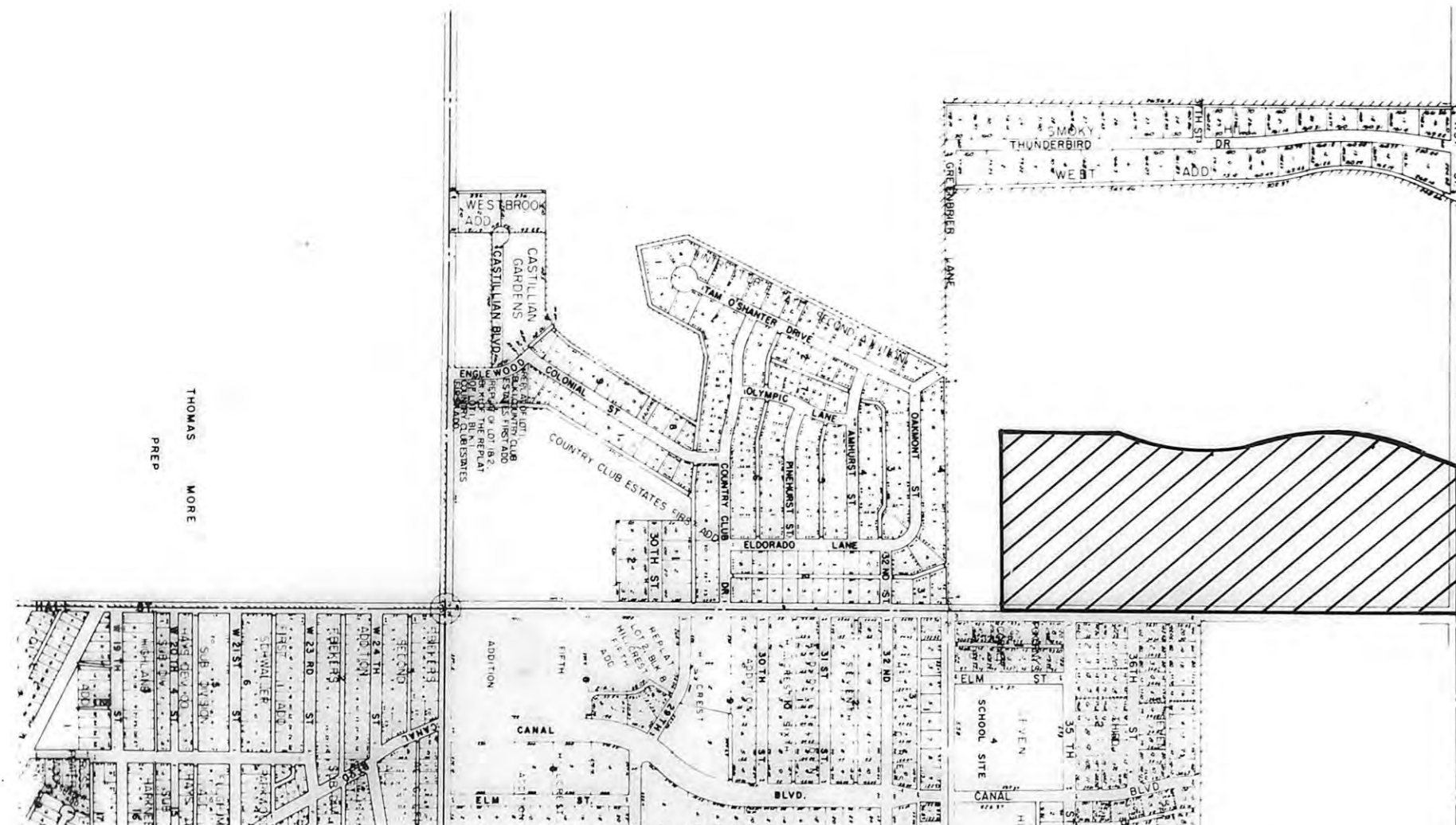
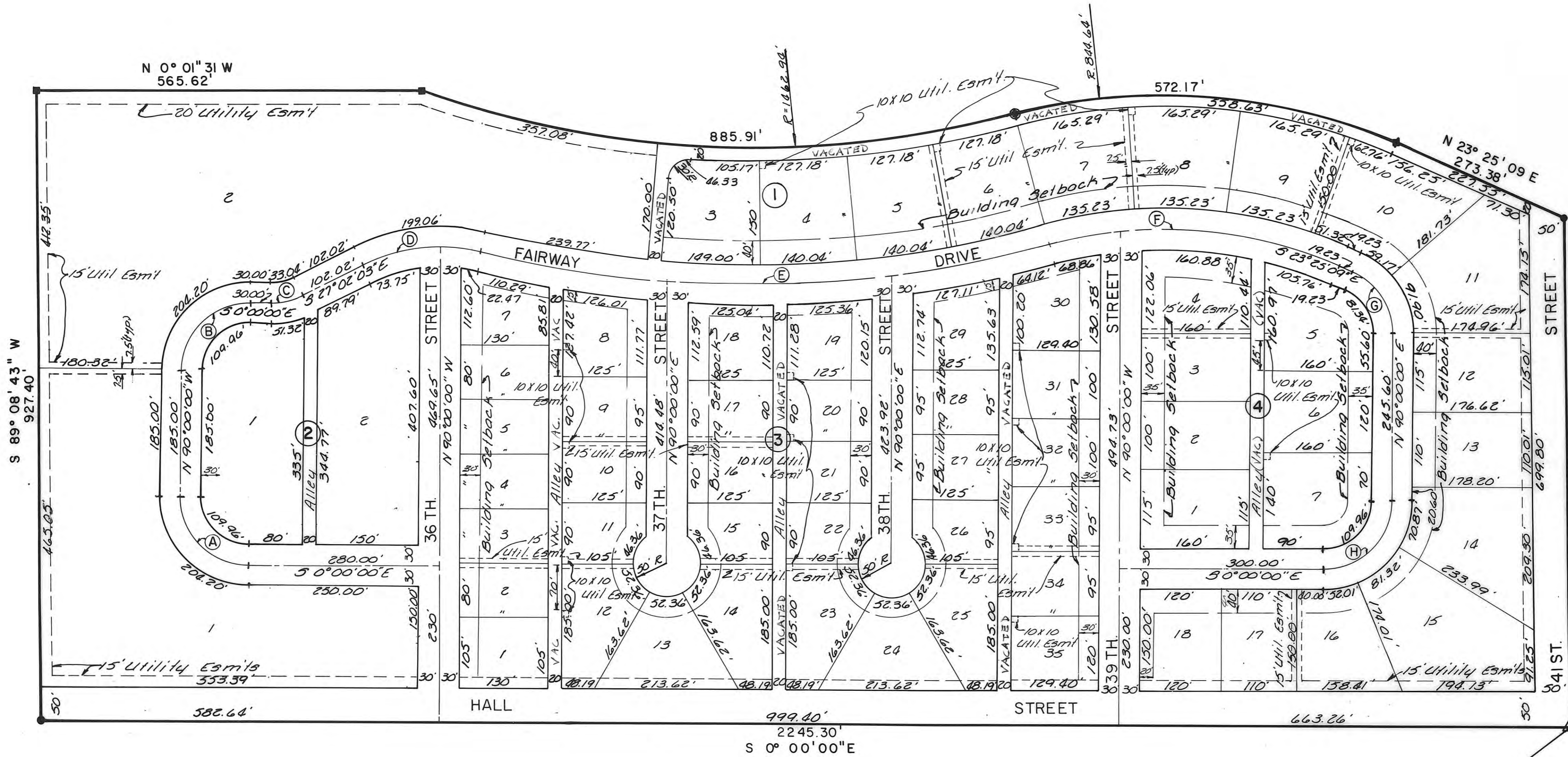
The dedication shown on this plat is accepted by the City Commission of the City of Hays, Kansas, this 13th day of August, 1979.

ATTEST: *Ann Marie Anderson* City Clerk
Wanda S. Rupp Mayor

The dedication shown on this plat is accepted by the County Commission of Ellis County, Kansas, this 17th day of September, 1979.

ATTEST: *Emory G. Rome* County Clerk
Edward J. Smith Chairman

PREPARED BY
BUCHER & WILLIS
CONSULTING ENGINEERS, PLANNERS & ARCHITECTS
SALINA, KANSAS KANSAS CITY, MO.

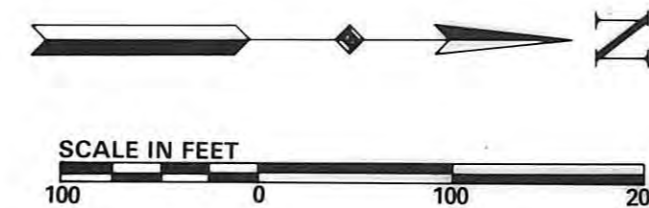


LOCATION MAP

LEGEND

- 1/2" Rebar Found
- Concrete Marker Found
- ▲ Section Corner Found
- 1/2" Rebar Set

Ord #2784
Bk: 380 Pg: 600
VACATING ALLEYS
Bk: 1-3-4



RECORDED:

State of Kansas, County of Ellis, ss

This is to certify that this instrument was filed for record in the Register of Deeds Office on the 27 day of Sept, 1979 in Book Plat, Page 356.

Virginia Perry
Register of Deeds

Virginia Perry
Register of Deeds