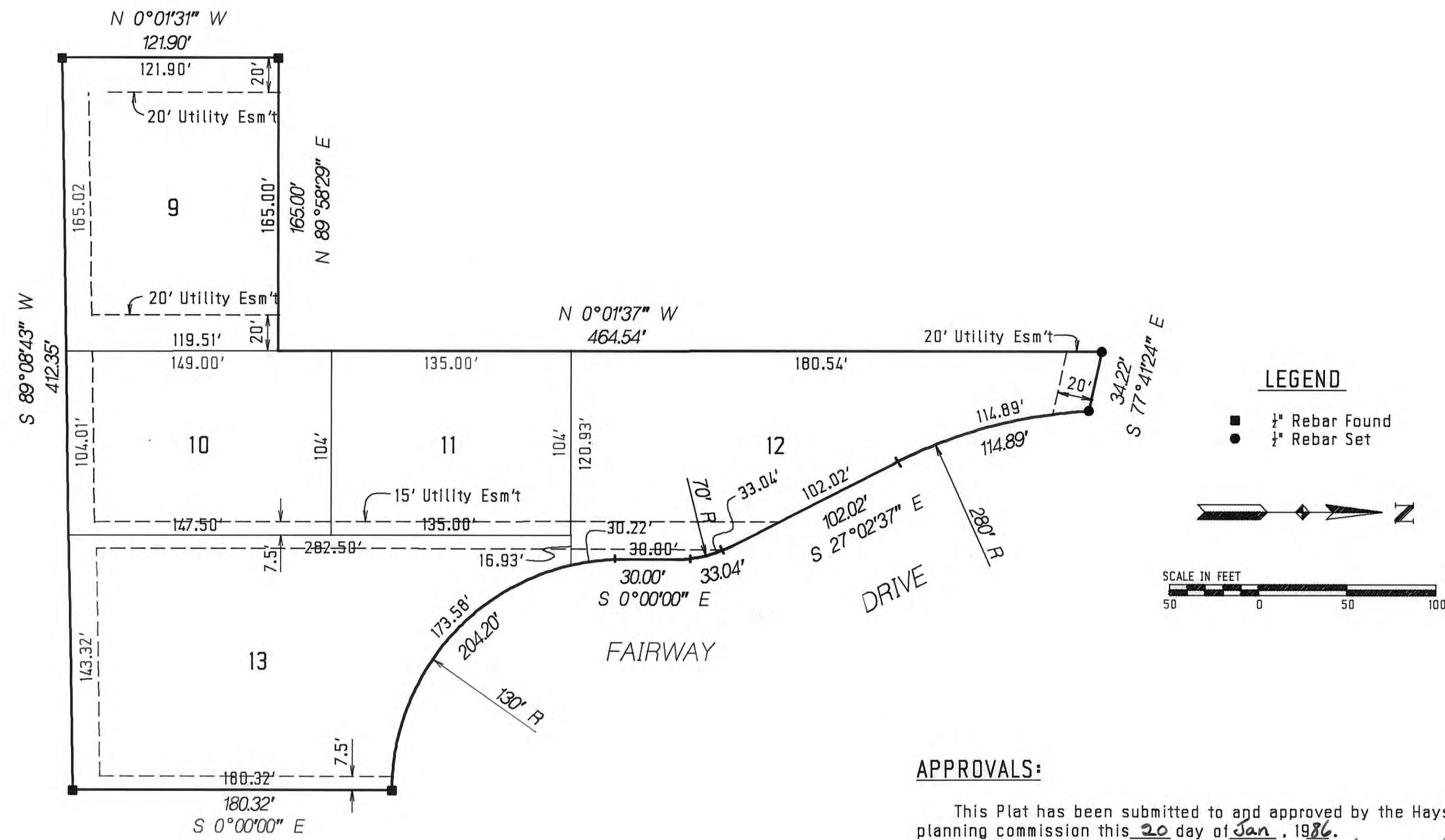
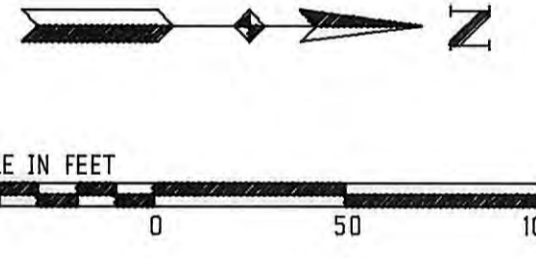


SECOND REPLAT OF A PORTION OF LOT 2, BLOCK 1, OF GOLDEN BELT COUNTRY CLUB ADDITION HAYS, KANSAS



LEGEND

- 1/2" Rebar Found
- 1/2" Rebar Set



LEGAL DESCRIPTION:

A tract of land in the Northeast Quarter (NE 1/4) of Section Twenty-Nine (29), Township Thirteen (13) South, Range Eighteen (18) West of the Sixth Principal Meridian, Ellis County, Kansas described as follows:

Commencing at the Northeast (NE) corner of the Northeast Quarter (NE 1/4) of Section 29, Township 13 South, Range 18 West, THENCE on an assumed bearing of South 0 degrees 00 minutes 00 seconds East (S 0°00'00" E), along the east line of said Northeast Quarter (NE 1/4), a distance of 2245.30 feet; THENCE on a bearing of South 89 degrees 08 minutes 43 seconds West (S 89°08'43" W), a distance of 515.05 feet, to the point of beginning; THENCE continuing on the last described course, a distance of 412.35 feet; THENCE on a bearing of North 0 degrees 01 minutes 31 seconds West (N 0°01'31" W), a distance of 121.90 feet; THENCE on a bearing of North 89 degrees 58 minutes 29 seconds East (N 89°58'29" E), a distance of 165.00 feet; THENCE on a bearing of North 0 degrees 01 minutes 31 seconds West (N 0°01'31" W), a distance of 464.54 feet; THENCE on a bearing of South 77 degrees 41 minutes 24 seconds East (S 77°41'24" E), a distance of 34.22 feet, to a point on the west line of Fairway Drive, Thence on a curve to the left, along the west line of Fairway Drive, having a radius 280 feet, a chord bearing of South 15 degrees 17 minutes 20 seconds East (S 15°17'20" E) and a terminal tangent bearing of South 27 degrees 02 minutes 37 seconds East (S 27°02'37" E), an arc distance of 114.89 feet; THENCE on a bearing of South 27 degrees 02 minutes 37 seconds East (S 27°02'37" E), a distance of 102.02 feet; THENCE on a curve to the right, having a radius of 70 feet and a terminal tangent bearing of South 0 degrees 00 minutes 00 seconds East (S 0°00'00" E), an arc distance of 33.04'; THENCE on a bearing of South 0 degrees 00 minutes 00 seconds East (S 0°00'00" E), a distance of 30.00 feet; THENCE on a curve to the left having a radius of 130 feet and a terminal tangent bearing of North 90 degrees 00 minutes 00 seconds East (N 90°00'00" E), an arc distance of 204.20 feet; THENCE on a bearing of South 0 degrees 00 minutes 00 seconds East (S 0°00'00" E), a distance of 180.32 feet, to the point of beginning. Said tract contains 2.386 acres more or less.

EASEMENTS:

Easements are hereby dedicated for public use, as utility easement right-of-way, which are shown as lying between the dashed lines in widths indicated and set forth on this plat, and said easements may be employed for the purpose of installing, repairing and maintaining gas lines, electric lines, telephone lines, and all other forms and types of public utilities, new or hereafter used by the public over, under and along the strips marked "Utility Esm'ts".

OWNERS CERTIFICATE:

Know all men by these presents, that we the undersigned property owners of the land above described, have caused the same to be surveyed and platted into lots, blocks, streets, alleys and easements the same to be known as Second Replat of Lot 2, in Block 1 of Golden Belt Country Club Addition to the City of Hays, in Ellis County Kansas. The easements are hereby granted to the public for the purpose of constructing, operating, maintaining and repairing all public utilities.

CHAUMONT HOMEOWNERS ASSOC.
By Ross Beach
Ross Beach, President

FIRST NATIONAL BANK OF HAYS CITY
By Loren A. Doll
Loren A. Doll (Chrmn. of Brd.)

NOTARY CERTIFICATE:

State of Kansas, County of Ellis, SS
Be it remembered that on this 30 day of May, 1986, before me, a notary public in and for said County and State, came Ross Beach, President of Chaumont Homeowners Association, and Loren A. Doll, Chairman of the Board First National Bank of Hays City, to me personally known to be the same persons who executed the forgoing instrument of writing and duly acknowledge the execution of the same. In testimony whereof, I have hereunto set my hand and affixed my notarial seal the day and year above written.
My Commission Expires 9-5-86
H. E. Wentling
Notary Public

APPROVALS:

This Plat has been submitted to and approved by the Hays-Ellis County planning commission this 20 day of Jan, 1986.

Don Butler Secretary
Blair Miller Chairman

The dedication shown on this plat is accepted by the City Commission of the City of Hays, Kansas this 26th day of June, 1986.

Attested:
Ann Schuchman City Clerk
Mike Williams Mayor

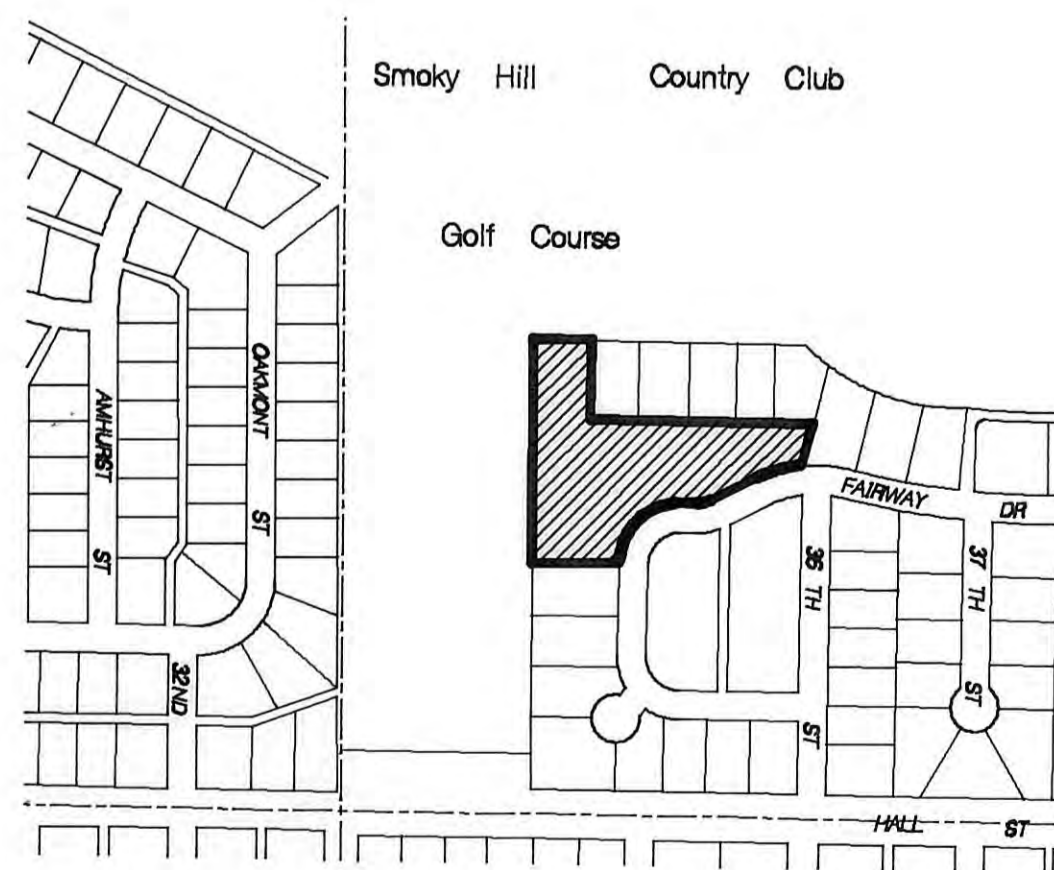
RECORDED:

State of Kansas, County of Ellis, SS

This is to certify that this instrument was filed for record in the Register of Deeds Office on the 16 day of July, 1986, in Book 184, Page 327-330

Rose Ann Rupp Register of Deeds
Mary Ann King Deputy

Phone - 359-512
Plat No. 359-513



LOCATION MAP