

STATE OF KANSAS  
SS:  
COUNTY OF ELLIS,

KNOW ALL MEN BY THESE PRESENTS, that the above and foregoing plat has been submitted to me, and that the same is hereby approved by me this 18 day of February, 1947.

*Henry F. ...*  
City Attorney of Hays, Kansas.

STATE OF KANSAS  
SS:  
COUNTY OF ELLIS,

I, Victor Wells, City Clerk of the City of Hays, Kansas, hereby certify that the above plat was approved by the Governing Body of said city on the 18 day of February, 1947.

*Victor Wells*  
City Clerk.

**RESOLUTION**

WHEREAS, Philip Gottschalk and Lidewina Gottschalk his wife, have presented to the Board of City Commissioners of Hays, Kansas, a certain plat of real estate situate within the corporate limits of the City of Hays, said plat being a proposed addition to the City of Hays, Kansas, of the following described real estate, to-wit:

Beginning at a point 30 feet west and 30 feet north of the southeast corner of Section 33, Township 13 south, Range 18 west, thence west parallel to the south line of said section 719.5 feet; thence westerly on a deflection of 28 degrees 34 minutes a distance of 255.2 feet; thence northerly on a deflection of 90 degrees 13 minutes a distance of 958.3 feet; thence easterly on a deflection of 89 degrees 15 minutes a distance of 560.5 feet; thence south on a deflection of 62 degrees 46 minutes a distance of 656.6 feet to point of beginning.

and to be known as The Gottschalk Addition to the City of Hays, Kansas, and,

WHEREAS, the said plat has been approved by the City Attorney of Hays, Kansas, as required by law, and application having been made for the approval of the Board of City Commissioners and said board having found said plat to be legal and to conform with the statutes in such matters made and provided.

NOW THEREFORE BE IT RESOLVED by the Governing Body of the City of Hays, Kansas, that the City of Hays, Kansas, hereby approved said plat and dedication, that the City Clerk of the City of Hays is hereby authorized to endorse upon said plat the approval as herein set out.

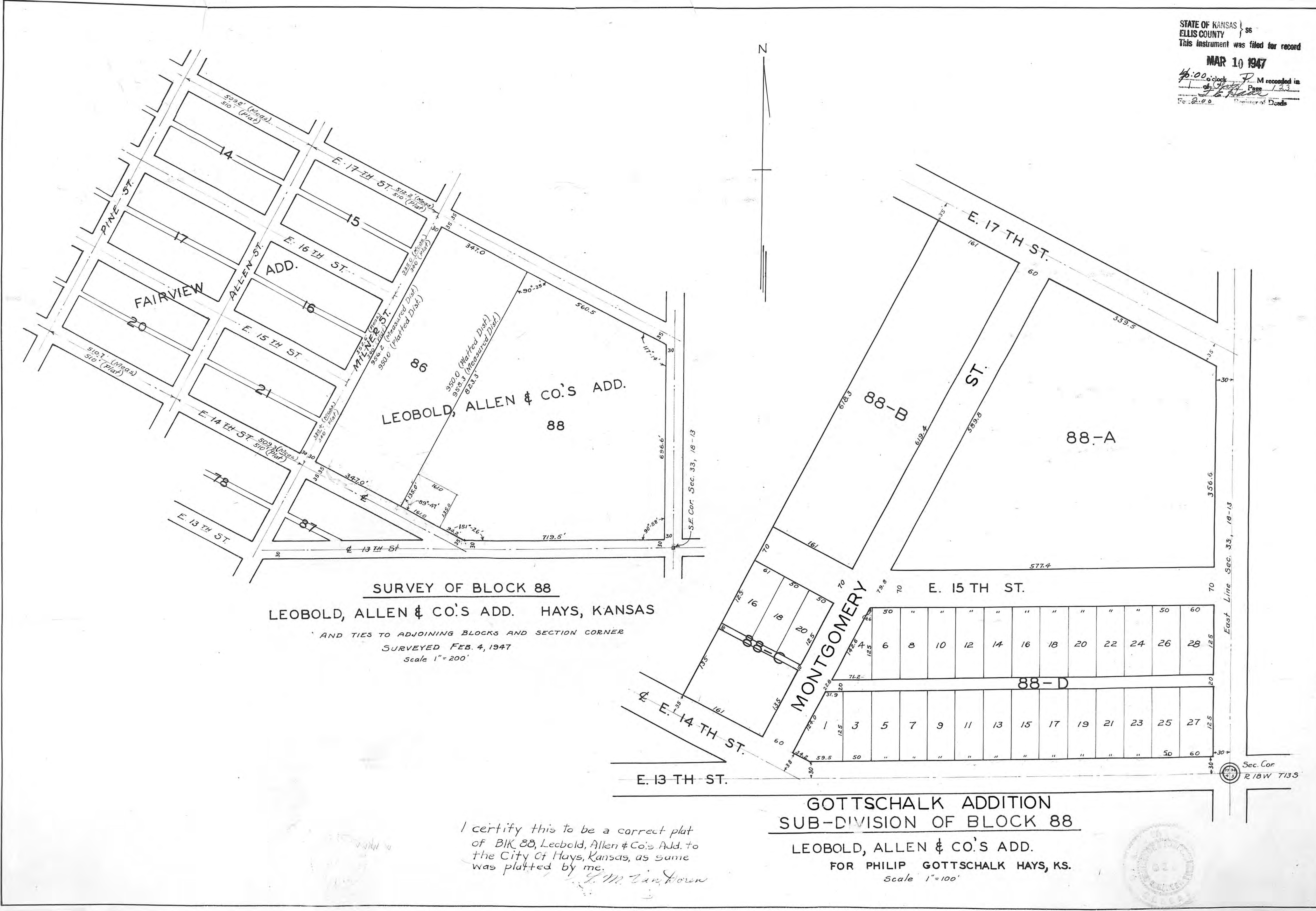
*E. F. ...*  
Mayor.

ATTEST: *Victor Wells*  
City Clerk.

I certify this to be a correct plat of The Gottschalk Addition to the City of Hays, Kansas, as same was platted by me.

SERVIS & VAN DOREN  
Consulting Engineers

By: *L. M. Van Doren*  
L. M. Van Doren



STATE OF KANSAS } ss  
ELLIS COUNTY }  
This instrument was filed for record  
MAR 10 1947  
4:20 o'clock PM recorded in  
Page 133  
County Clerk of Ellis County, Kansas

**SURVEY OF BLOCK 88**  
**LEOBOLD, ALLEN & CO'S ADD. HAYS, KANSAS**  
AND TIES TO ADJOINING BLOCKS AND SECTION CORNER  
SURVEYED FEB. 4, 1947  
Scale 1"=200'

**GOTTSCHALK ADDITION**  
**SUB-DIVISION OF BLOCK 88**  
**LEOBOLD, ALLEN & CO'S ADD.**  
**FOR PHILIP GOTTSCHALK HAYS, KS.**  
Scale 1"=100'

I certify this to be a correct plat of Blk 88, Leobold, Allen & Co's Add. to the City of Hays, Kansas, as same was platted by me.  
*L. M. Van Doren*