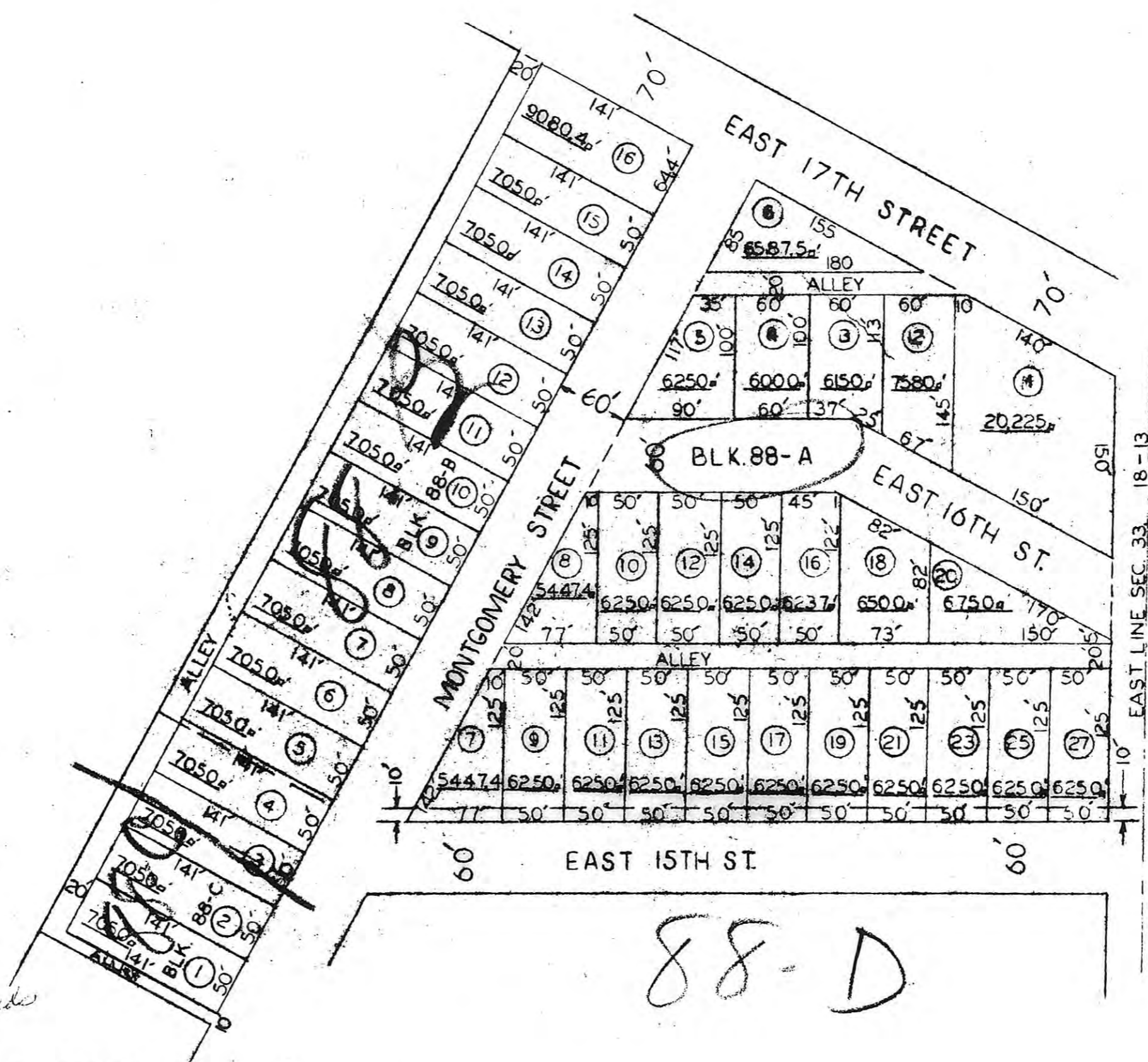


Corrected Copy of Plat as Original Plat has duplication of Lot Numbers in Block 88 A

21



SCALE 1" = 100'



Filed Aug 18, 1952  
 10 o'clock PM  
 & Plate page 21  
 Al M. Rosen  
 Fee 3.00 - Register's Fees

ARCHITECTURAL ENGINEERING SERVICE  
 HAYS KANSAS

I certify this replat to be correct.

*Harold A. Rothgeb*  
 Harold A. Rothgeb



REPLAT OF BLOCK 88-A, 88-B,  
 & PORTION OF 88-C. PHILIP  
 GOTTSCHALK, SUB DIVISION OF  
 BLOCK 88 LEBOLD ALLEN & CO.  
 ADD. HAYS, KANSAS.

For Dedication See Bk. 22 Misc Page 580

THIS IS A DIRECT PHOTOGRAPHIC REPRODUCTION OF THE OFFICIAL INSTRUMENT (RECORDED PLAT).  
 THIS REPRODUCTION WAS MADE BY BUCHER & WILLIS, CONSULTING ENGINEERS, PLANNERS & ARCHITECTS IN JUNE 1979