

# HANSA'S ADDITION

## SURVEYOR'S CERTIFICATE

STATE OF KANSAS } SS  
 COUNTY OF ELLIS }

I, Thomas W. McCormick, a licensed professional engineer in the State of Kansas, do hereby certify this plat to be true and correct to the best of my knowledge, and that all iron bars as shown have been accurately set. Survey completed in August, 1977.

Thomas W. McCormick  
 Thomas W. McCormick, P.E.



## OWNER'S CERTIFICATE

STATE OF KANSAS } SS  
 COUNTY OF ELLIS }

Know all men by these presents, that we, the undersigned property owners of the land as above set forth in the Surveyor's Certificate, have caused the same to be surveyed and platted into Lots, Blocks, Easements, Streets and Alleys, the same to be known as Hansa's Addition an addition to the City of Hays, Ellis County, Kansas; the streets and alleys are hereby dedicated to and for the use of the public, and easements as indicated on the accompanying plat are hereby granted to the public for the purpose of constructing, operating, maintaining and repairing all public utilities.

J. M.D.  
 Hansa Chavalithamrong

Somsri Chavalithamrong

## NOTARY CERTIFICATE

STATE OF KANSAS } SS  
 COUNTY OF ELLIS }

Be it remembered that on this 28th day of September, 1977, before me, a notary public in and for the said County and State, Hansa Somsri Chavalithamrong, to me personally known to be the same person who executed the foregoing instrument, and duly acknowledged the execution of the same to me, personally, in his own hand and affixed my notarial seal.

February 28, 1979

Shelby J. Cooney  
 Notary Public

## CERTIFICATE OF THE PLANNING COMMISSION

This plat of Hansa's Addition has been submitted to and approved by the Hays Planning Commission on the 11th day of October, 1977.

Robert J. Bauli  
 Robert J. Bauli, Chairman

Margaret E. Smith  
 Margaret E. Smith, Secretary

## CERTIFICATE OF THE CITY COMMISSION

STATE OF KANSAS } SS  
 CITY OF HAYS }

The plat as shown on this plat accepted by the City Commission of the City of Hays, Kansas, on the 14th day of October, 1977.

George Phillip  
 George Phillip - Mayor

Dorothy Soderblom  
 Dorothy Soderblom - City Clerk

## CERTIFICATE OF THE REGISTER OF DEEDS

STATE OF KANSAS } SS  
 COUNTY OF ELLIS }

This is to certify that this instrument was filed for record in the Register of Deeds Office of the County of Ellis, Kansas, on the 18th day of November, 1977 in Book 28 Page 56.

Virginia Stegoy  
 Register of Deeds

Russ Ann Papp  
 Deputy



Entered on transfer record this 18th day of November, 1977.

Ernest H. Wells  
 Ernest H. Wells - Notary

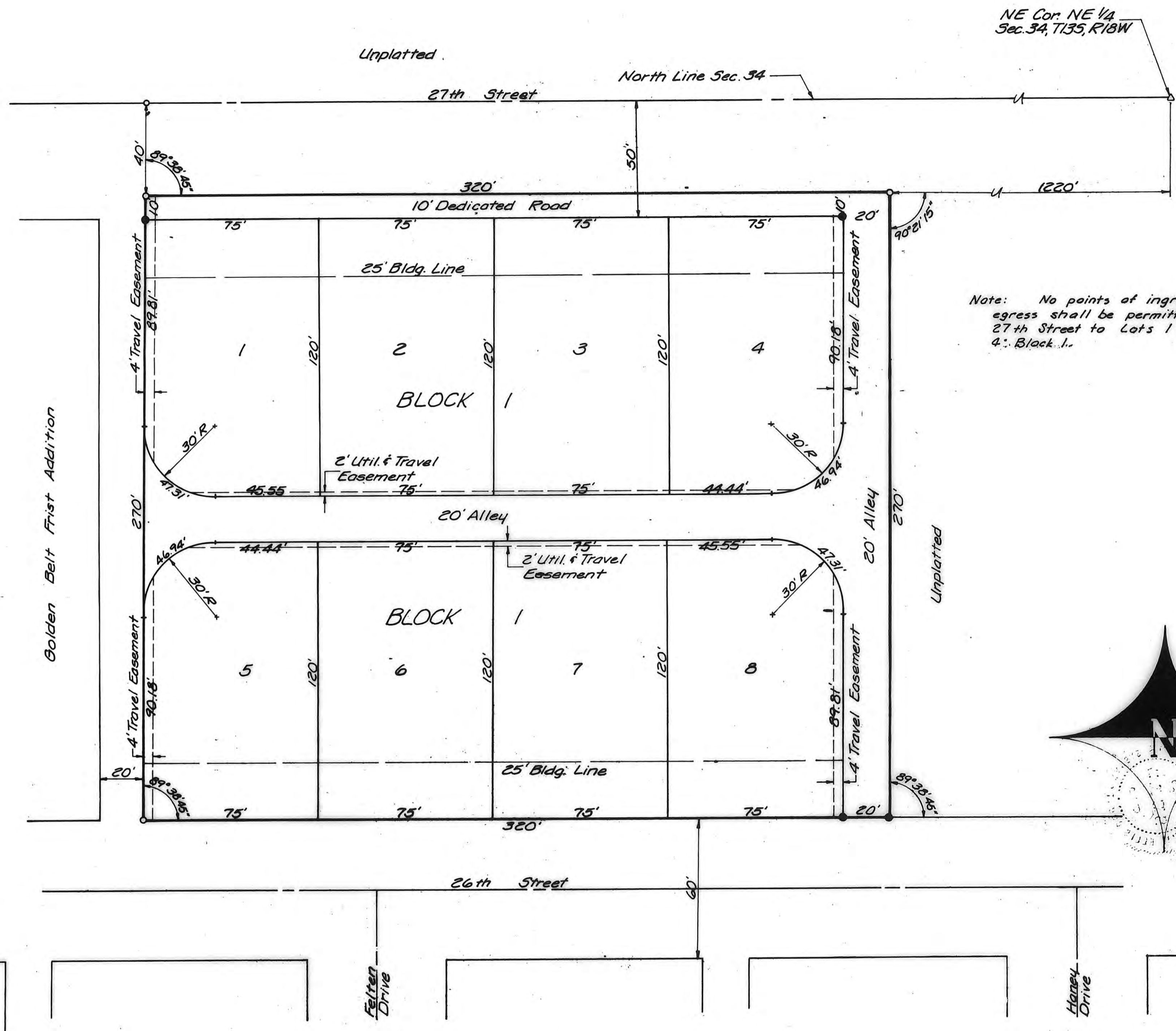
Emerg J. Tomie  
 County Clerk

## EASEMENTS

Easements are hereby dedicated for public use, as utility easement right-of-way which are shown as lying between the dashed lines in widths indicated and as set forth on this plat unless otherwise noted, and said easements may be employed for the purpose of installing, repairing and maintaining gas lines, electric lines, telephone lines and all other forms and types of public utilities now or hereafter used by the public over and along the strips marked "easements."

## STREETS

Streets and alleys shown on this plat and not heretofore dedicated to and for public use are hereby dedicated.



Note: No points of ingress or egress shall be permitted from 27th Street to Lots 1 through 4, Block 1.

## DESCRIPTION

A tract of land in the Northeast Quarter of Section 34, Township 13 South, Range 18 West of the Sixth Principal Meridian in Ellis County, Kansas, and further described as follows: Beginning at a point 40 feet South and 1220 feet West of the Northeast corner of said Section 34, thence West parallel to the North line of said Section 34 a distance of 320 feet, thence South parallel to the East line of said Section 34 a distance of 270 feet, thence East parallel to the North line of said Section 34 a distance of 320 feet, thence North parallel to the East line of said Section 34 a distance of 270 feet to the point of beginning containing 1.983 acres more or less.

THIS IS A DIRECT PHOTOGRAPHIC REPRODUCTION OF THE OFFICIAL INSTRUMENT (RECORDED PLAT).  
 THIS REPRODUCTION WAS MADE BY BUCHER & WILLIS, CONSULTING ENGINEERS, PLANNERS & ARCHITECTS IN AUGUST, 1979.

ORIGINAL PLAT

## HANSA'S ADDITION

OCTOBER 1977

HUBERT CASPAR JR  
 ENGINEERS ARCHITECTS



PLANNED