

PLAT AND DEDICATION OF HARKNESS ADDITION

Know all men by these presents, that I, A. H. Harkness, a single man, of Hays, Ellis County, Kansas, the owner in fee simple absolute of the real estate herein-after described, have caused to be surveyed and platted for record in accordance with the Laws of the State of Kansas, Blocks Sixteen(16) and Seventeen(17), Lebold Allen & Companys Addition to Hays City, Kansas, now the City of Hays, Kansas, to be named and known as Harkness Addition to the City of Hays, Ellis County, Kansas, the same constituting a sub-division of said Blocks Sixteen (16) and Seventeen(17), Lebold Allen & Companys' Addition to Hays City, Kansas, now the City of Hays, Kansas.

The plat hereto attached and made a part hereof is a true and correct plat of said Harkness Addition to the City of Hays, Kansas, showing all streets and alleys by their boundaries and extent.

The length and width of blocks and all lots for sale are indicated by figures on said plat, the length and width of all streets and alleys being shown in like manner. All streets, alleys, and public grounds as shown on said plat are hereby dedicated for public use. The names of the streets shall be the names designated in said plat.

In witness whereof, I have hereunto set my hand, this 7th day of May, 1937.

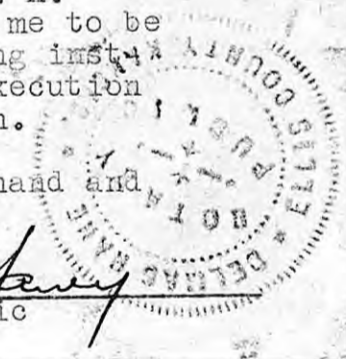
A. H. Harkness

State of Kansas, Ellis County, ss.

Be it remembered that on this 7th day of May, 1937, before me the undersigned, a notary public in and for the County and State aforesaid, appeared A. H. Harkness, a single man, who is personally known to me to be the same person who executed the above and foregoing instrument of writing, and who duly acknowledged the execution thereof for the uses and purposes therein set forth.

In witness whereof, I have set my hand and notarial seal the day and year last above written.

My commission expires Aug. 12th, 1940 Notary Public



State of Kansas, Ellis County, ss.

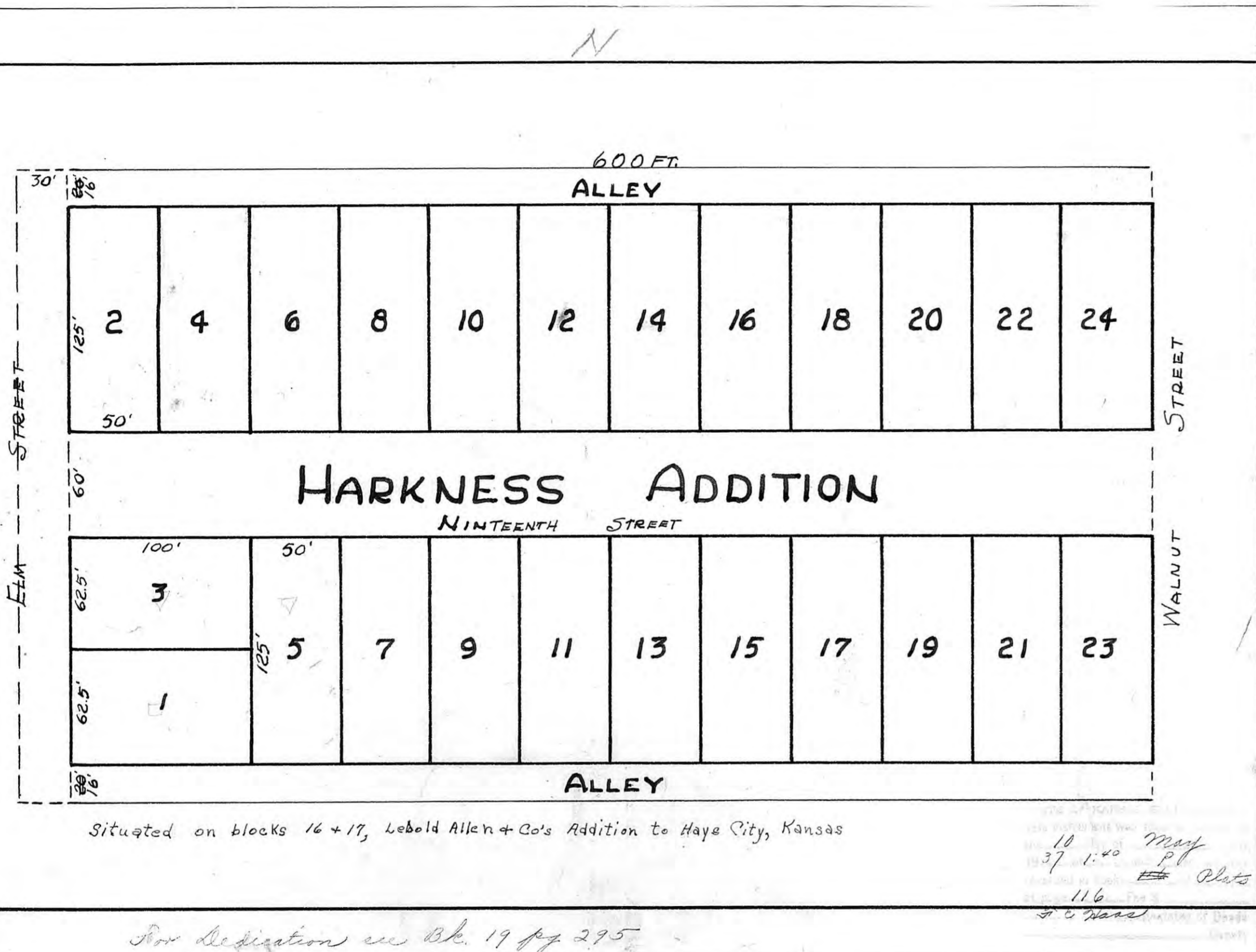
Know all men by these presents that the above and foregoing plat has been submitted to me, and that the same is hereby approved by me this 8 day of May, 1937.

Henry J. Harmon
City Attorney of Hays, Kansas.

State of Kansas Ellis County, ss.

I, Emily C. Johnson, City Clerk of the City of Hays, Kansas, hereby certify that the above plat was approved by the Board of Commissioners of said City on the 8 day of May, 1937.

Emily C. Johnson
City Clerk



Situated on blocks 16 + 17, Lebold Allen + Co's Addition to Hays City, Kansas

10 May
37 1:40 P
116 Plats
A. H. Harkness

For Dedication see Blk. 19 pg 295