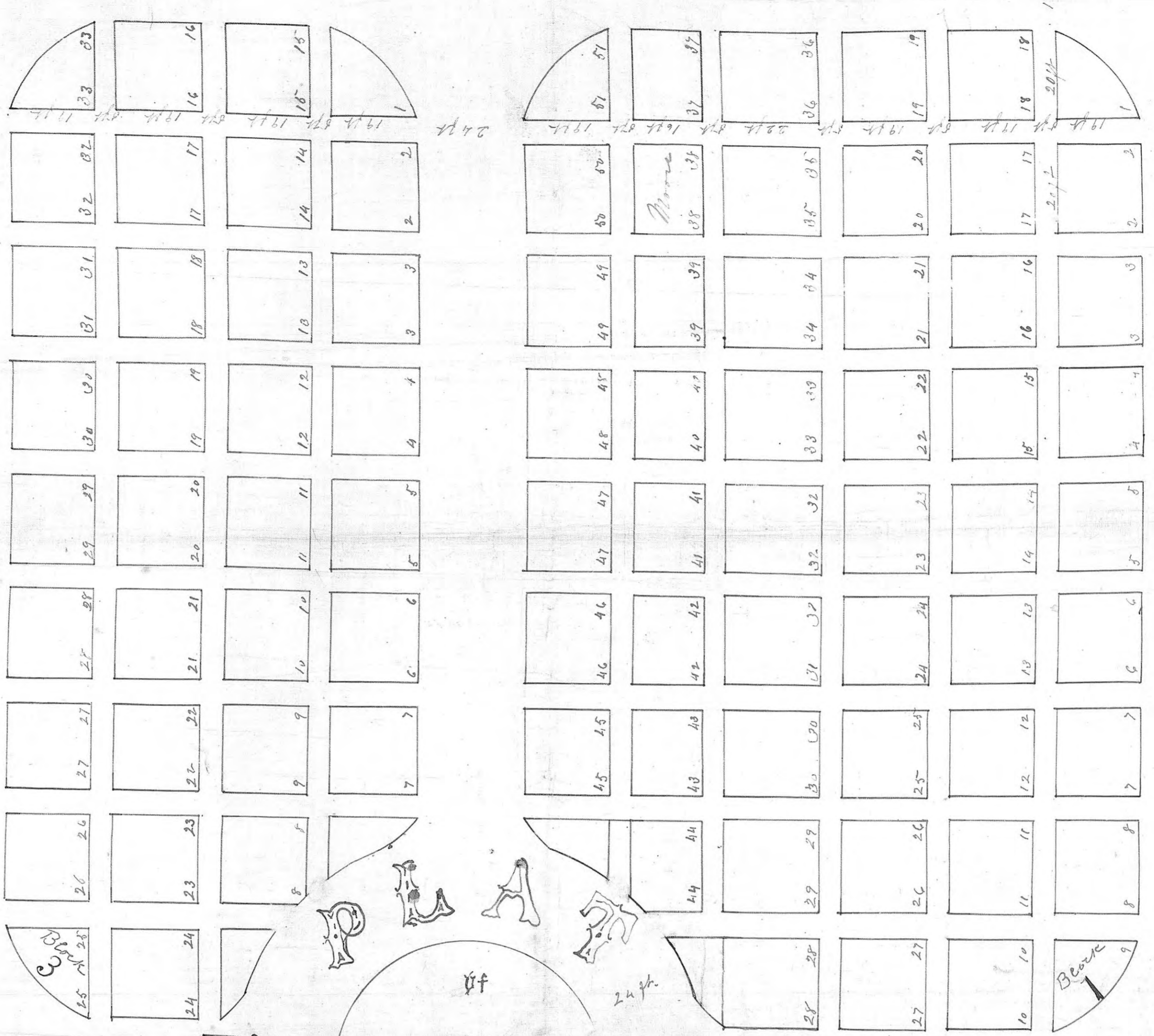
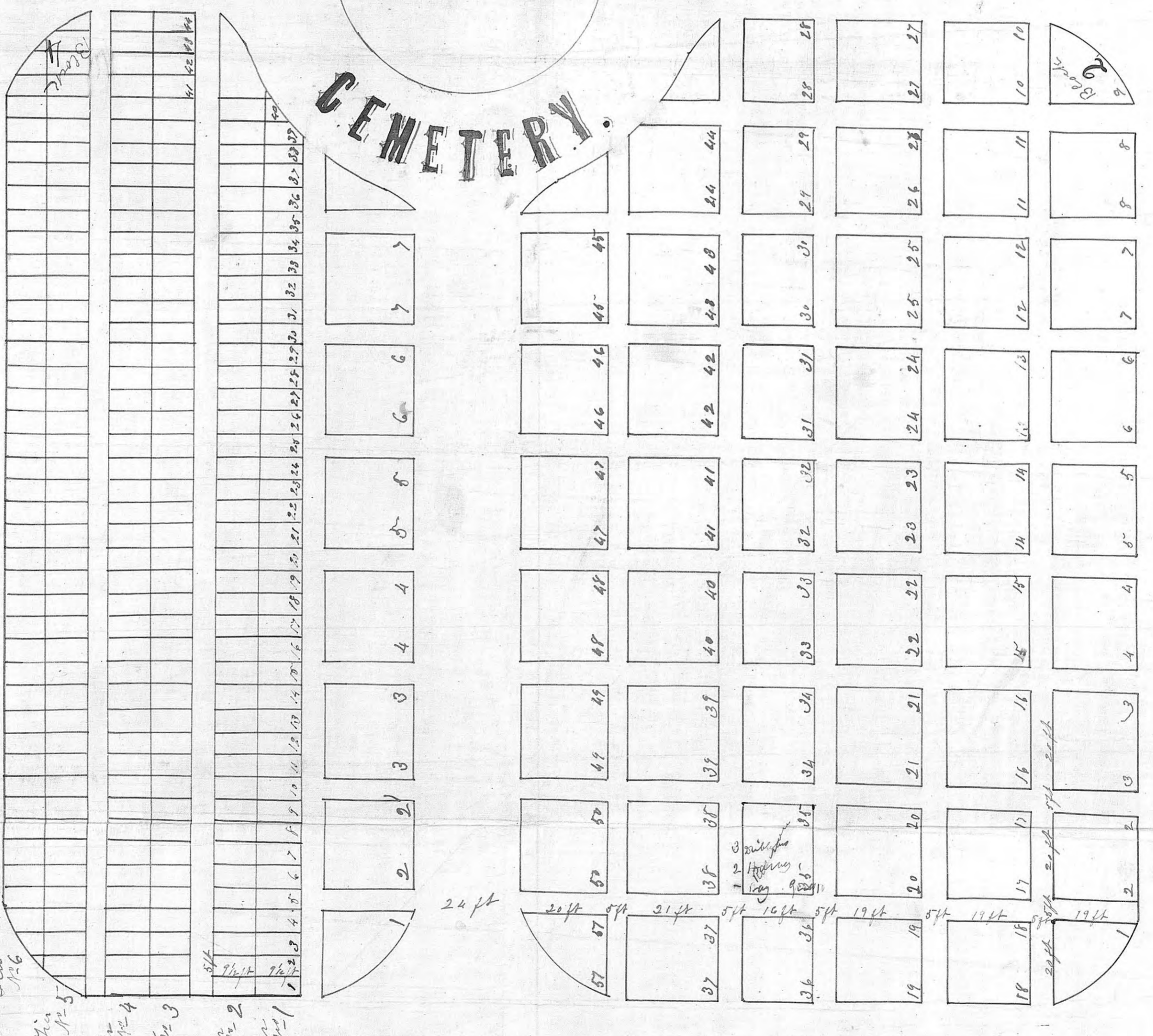


30 ft
to Su. line
40 ft
to Su. line



HAYS CITY

CEMETERY.



Line 126
Line 125
Line 124
Line 123
Line 122
Line 121

I Nathaniel Robbins hereby certify that the foregoing is a true and correct plat of a survey made by me of the grounds of the Hays City Cemetery.
Witness my hand at Hays City, Ellis County, Kansas this 19th day of January, A.D. 1882
Nathaniel Robbins
Cit & Sup'g'ng

[Handwritten signature]